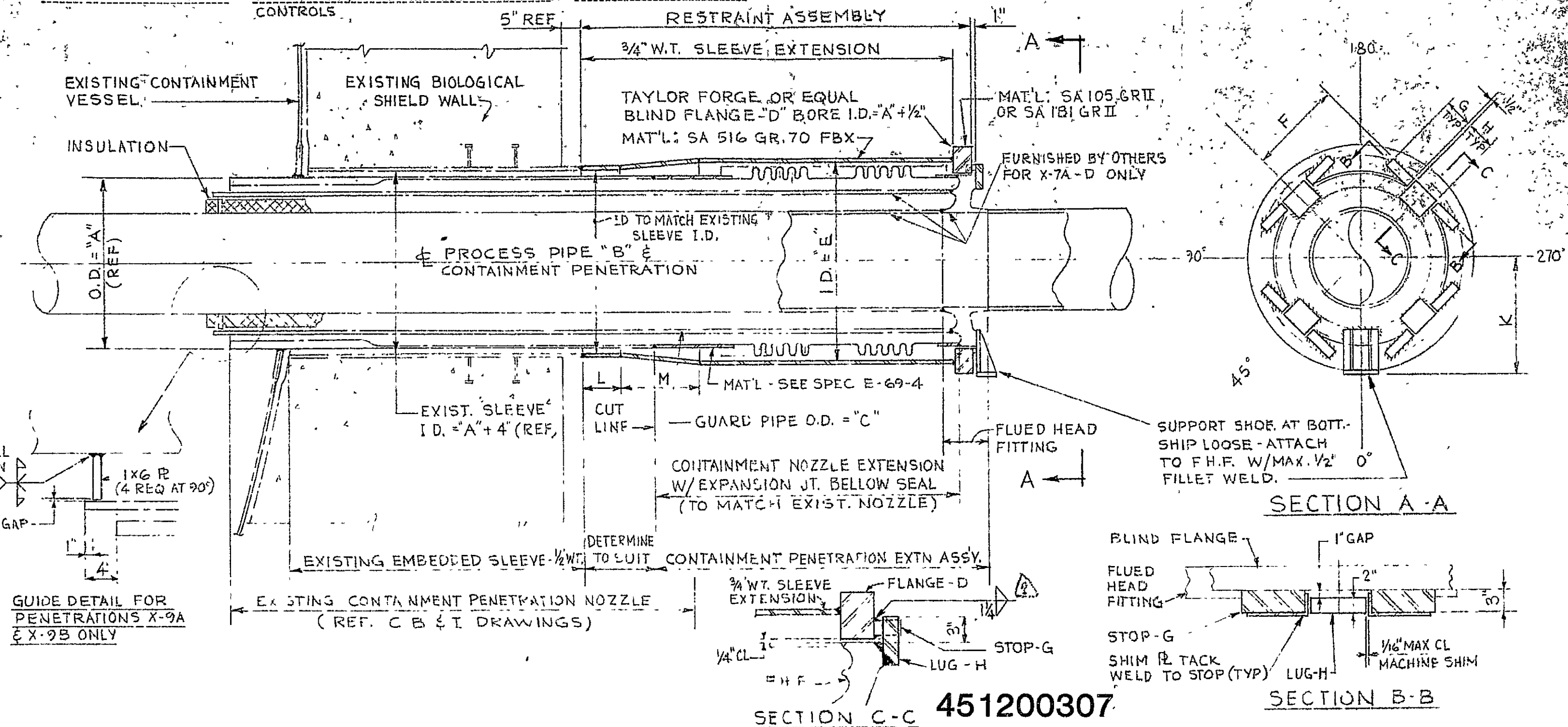


BY: B.S.S. DATE: 10-21-70
 CHKD. BY: DATE:

SUBJECT: NPPD - CNS
 CONTAINMENT PENETRATIONS X-7A-D,
 X-9A & X-9B; ASSY & EXTERIOR PENETRATION
 CONTROLS

SHEET NO. 1 OF 1
 JOB NO. 2520-02
 SKETCH M-200



GUIDE DETAIL FOR PENETRATIONS X-9A & X-9B ONLY

SECTION A-A

SECTION B-B

SECTION C-C 451200307

PENE R NO	A	PROCESS PIPE - B	GUARD PIPE C	FLANGE - D	RESTRAINT PIPE - E	F	STOP G	LUG H	K	L	M	REMARKS
X-7A	42	24 OD	36 OD	48" CLASS 350	52	24	2x3x8	2x6x7	29	10	20	
X-7B	42	24	36	48" CLASS 350	52	24	2x3x8	2x6x7	29	10	20	
X-7C	42	24	36	48" CLASS 350	52	24	2x3x8	2x6x7	29	10	20	
X-7D	42	24	36	48" CLASS 350	52	24	2x3x8	2x6x7	29	10	20	
X-9A	34	18	23	42" CLASS 350	44	20	2x3x8	2x6x7	26	10	20	
X-9B	34	18	23	42" CLASS 350	44	20	2x3x8	2x6x7	26	10	20	

SKETCH M-200
 NPPD - CNS
 CONTAINMENT
 PENETRATION
 X-7A THRU X-7D,
 X-9A & X-9B
 ASSY & EXTERIOR
 PENETR CONTROLS

ISSUE	DATE
1	10-20-70
2	11-20-70