

EQUIPMENT DEVICE LEGEND

- ▲ - INDICATES EQUIPMENT LOCATED ON LOCAL GENERATOR RELAY PANEL (FURNISHED WITH DIESEL GENERATOR)
- △ - INDICATES EQUIPMENT LOCATED ON GENERATOR CONTROL PANEL

FUSE LEGEND

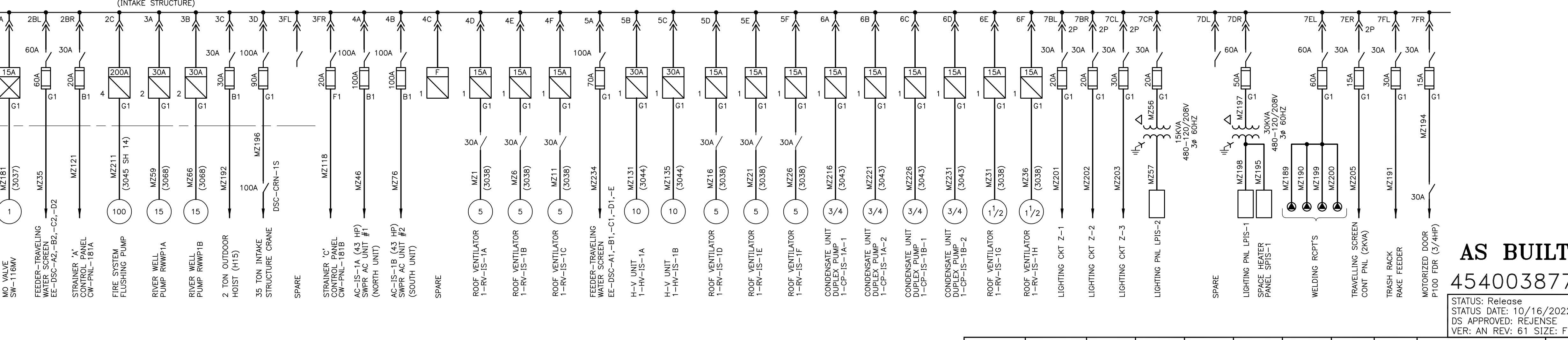
- G1 - GOULD TYPE TRS FUSE.
- B1 - BUSMANN TYPE FRG FUSE.

NOTES:

- FOR GENERAL NOTES SEE DRAWING 3001.
- FOR SYMBOL LIST SEE DRAWING 3070 & 3032.
- THIS BREAKER EQUIPPED WITH INSTANTANEOUS TRIP ELEMENTS ONLY.
- REMOVED.
- AN INTERLOCK EXISTS ON THE DOOR OF THE CABINET HOUSING THIS PT OPENING OF THIS DOOR WILL ISOLATE THE PT FROM THE BUS.

NOTE: (REFER MCC 2) FOR MOTOR CONTROLS & THEIR OPERATIONAL FUNCTION, SEE RELATED ELEMENTARY DIAGRAMS.

460V 3Ø 3W MCC-Z 600A BUS



AS BUILT
454003877
STATUS: Release
STATUS DATE: 10/16/2022
DS APPROVED: REJENSE
VER: AN REV: 61 SIZE: F

NO.	DESCRIPTION	ORDER DFT	DATE	ENG
AK/27/DR	2018-0335		03/26/18	MJC/CKC
AL/27/DR	2018-0335		03/26/18	MJC/CKC
AM/27/DR	2018-0335		03/26/18	MJC/CKC
AN/27/DR	2018-0335		03/26/18	MJC/CKC
AO/27/DR	2018-0335		03/26/18	MJC/CKC
AP/27/DR	2018-0335		03/26/18	MJC/CKC
AQ/27/DR	2018-0335		03/26/18	MJC/CKC
AR/27/DR	2018-0335		03/26/18	MJC/CKC

GROUP	1	2	3	4	5	6
SIGNIFICANT NUMBER						
DATE	8/9/94					
CHECKED	JAC					
DATE	8-22-94					
APPROVED	WCF					
DATE	9-9-94					
FILED						

COOPER NUCLEAR STATION
AUXILIARY ONE LINE DIAGRAM
MCC 1, SWGR BUS 1A, 1B, 1E,
& CRITICAL SWGR BUS 1F 1G

3002 SH 1