

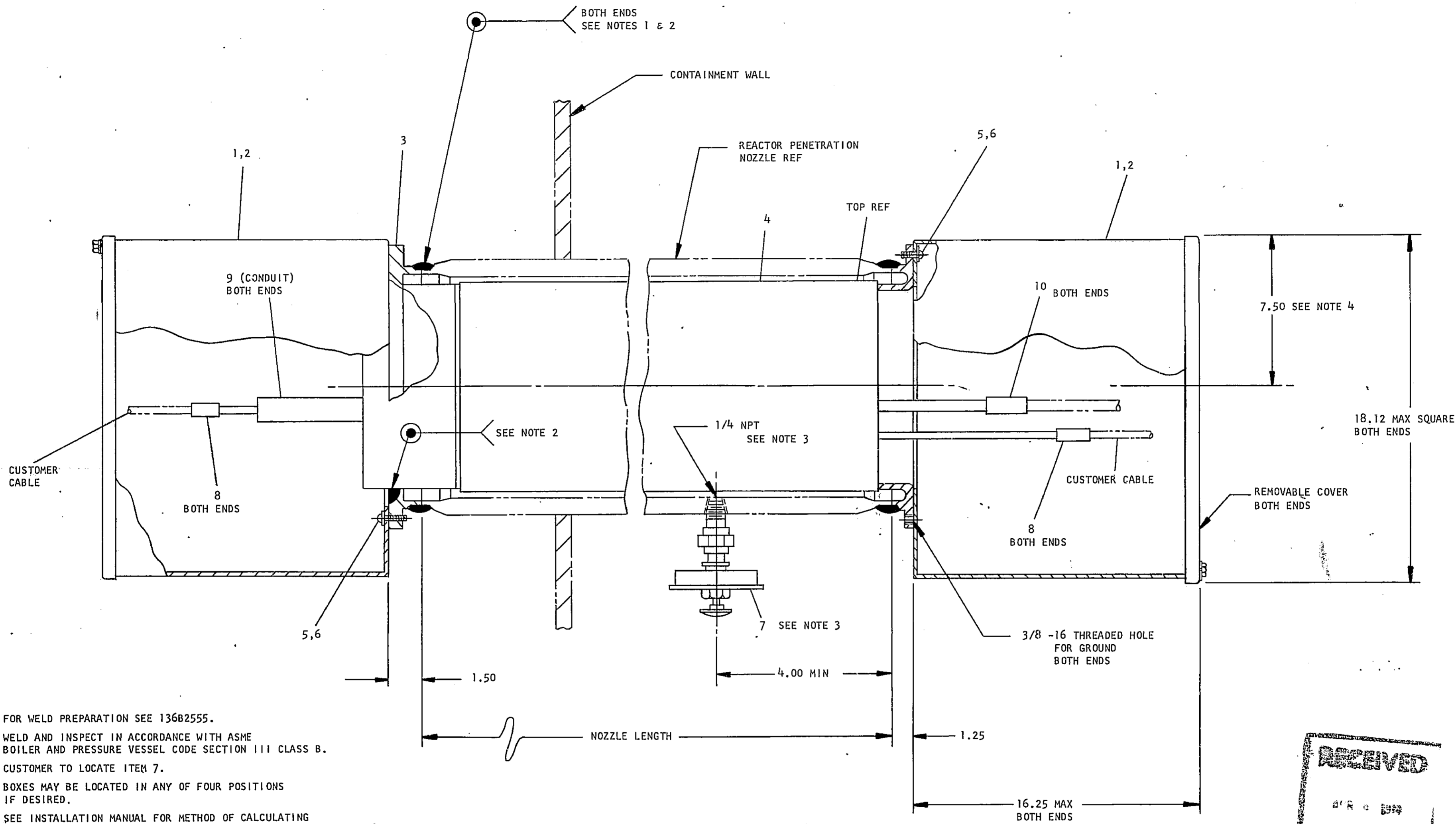
UNLESS OTHERWISE SPECIFIED USE THE FOLLOWING:

APPLIED PRACTICES	SURFACES	TOLERANCES ON MACHINED DIMENSIONS		
		FRACTIONS	DECIMALS	ANGLES
	✓	+	+	+
		-	-	-

TITLE  
 INSTALLATION  
 PENETRATION SEAL-INDICATION AND CONTROL  
 FIRST MADE FOR ELECTRICAL PENETRATION (COOPER STATION 1)

SEE 238X704NS FOR PART IDENTIFICATION

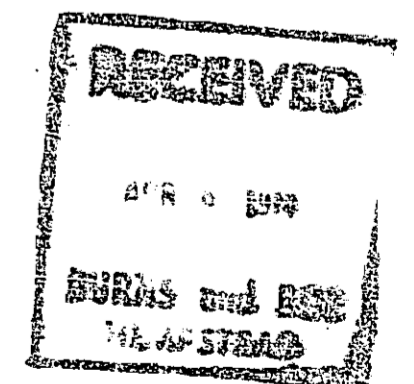
← REACTOR



- NOTES:
- FOR WELD PREPARATION SEE 136B2555.
  - WELD AND INSPECT IN ACCORDANCE WITH ASME BOILER AND PRESSURE VESSEL CODE SECTION III CLASS B.
  - CUSTOMER TO LOCATE ITEM 7.
  - BOXES MAY BE LOCATED IN ANY OF FOUR POSITIONS IF DESIRED.
  - SEE INSTALLATION MANUAL FOR METHOD OF CALCULATING ELECTRICAL CAPACITY.
  - APPROX. WEIGHT 500 LBS (LESS JCT BOXES)

238X704NS GROUP NO.	NOZZLE NO.	NOZZLE LENGTH
1	X100A	7' - 10"
1	X100H	7' - 10"
2	X100G	8' - 3"
2	X102	8' - 3"

**RECEIVED**  
**FILMED**  
 N.P.P.D., D.C.C.  
 S/N 16467



REVISIONS	PRINTS TO
1 MAY 22, 1970 E. Mangione TITLE WAS LOW VOLTAGE POWER ARK	A21 C 3 24 73

MADE BY E. Mangione ISSUED E. Mangione	APPROVALS APR 10, 1970 ARK MAY 13, 1970	NID SAN JOSE, CALIF	DIV OR DEPT LOCATION	117C3349 CONT ON SHEET	SH NO.
---	--	------------------------	-------------------------	---------------------------	--------