



Global Expertise • One Voice

# **PWROG – NRC Meeting**

***March 13<sup>th</sup>, 2023***



# Topics

- **Opening Remarks** *PWROG & NRC*
- **PWROG Structure & Overview, Top Focus Areas, and Continued Use of Process Improvements** *Mike Powell, PWROG Chairman*
- **NRC Structure & Overview and NRC Topics** *TBD*
- **Open Discussion** *PWROG & NRC*
- **Closing Remarks** *PWROG & NRC*



# Opening Remarks & Goals of the Meeting

---

PRESSURIZED WATER REACTOR OWNERS GROUP



# Structure & Organization

---

PRESSURIZED WATER REACTOR OWNERS GROUP



## 180 PWR UNITS

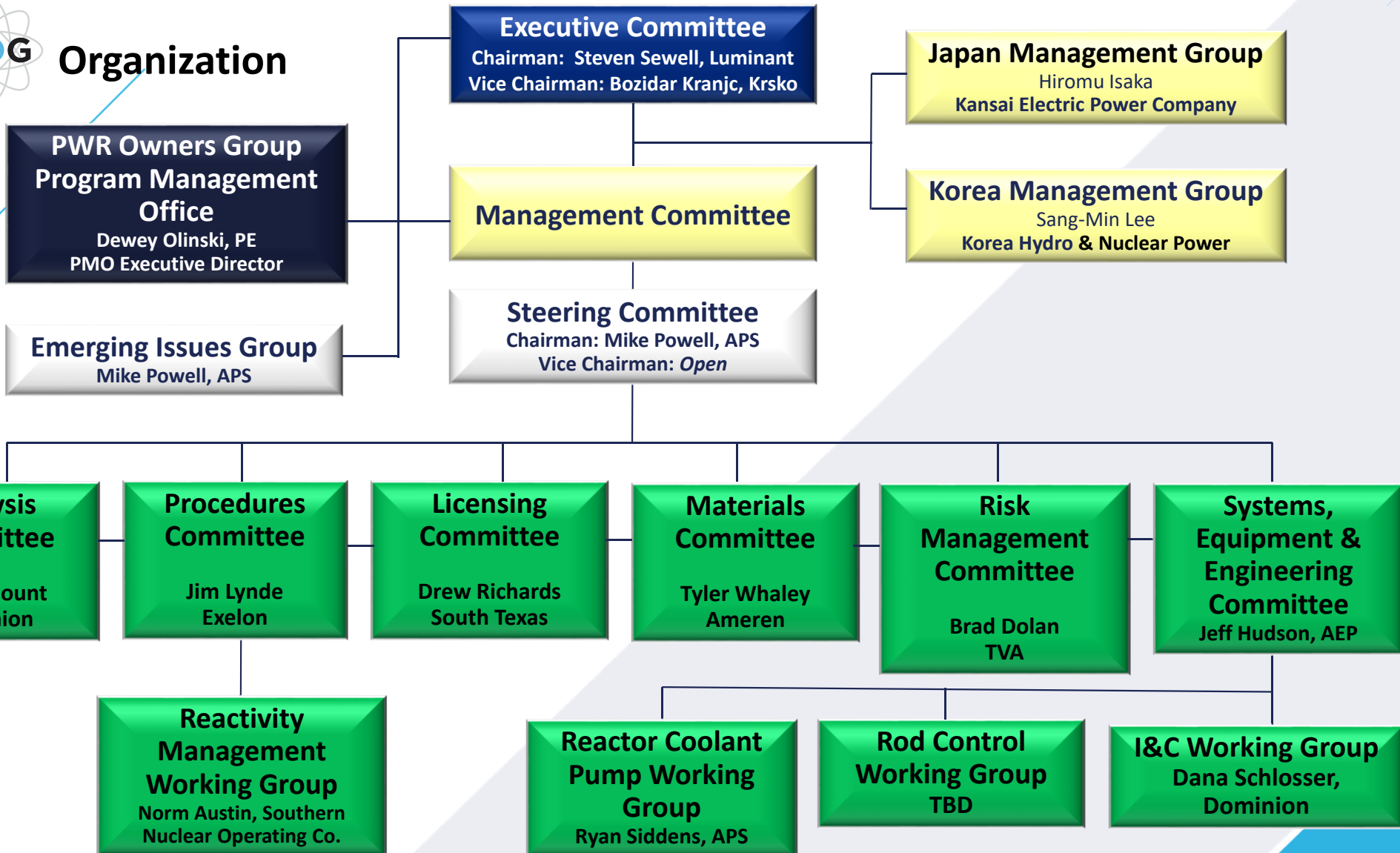
A total of 180 PWR units are represented by the PWROG

# Our Members

- |                         |                                       |                                    |
|-------------------------|---------------------------------------|------------------------------------|
| Angra I                 | Energy Harbor                         | Ringhals 2,3,&4                    |
| Ameren                  | Eskom                                 | Shikoku Electric Power Company     |
| American Electric Power | Florida Power & Light (FPL) / NextEra | South Carolina Electric & Gas      |
| Arizona Public Service  | Hokkaido Electric Power Company       | Southern Nuclear Operating Company |
| AXPO                    | Japan Atomic Power Company            | South Texas Project (STP) Nuclear  |
| Barakah NPP             | Kansai Electric Power Company         | Operating Company                  |
| Borssele                | Korea Hydro & Nuclear Power           | Spanish Utilities (ANAV & CNAT)    |
| Constellation           | NPP Krško                             | Taiwan Power Company               |
| Dominion                | Kyushu Electric Power Company         | Tennessee Valley Authority         |
| Duke                    | Luminant Power                        | Evergy / Wolf Creek Nuclear        |
| EDF                     | Pacific Gas & Electric                | Operating Company                  |
| Sizewell B              | PSEG                                  | Xcel Energy                        |
| Electrabel              |                                       |                                    |
| Entergy                 |                                       |                                    |



# Organization



**Tom Laubham, Program Director**  
[laubhatj@pwrog.com](mailto:laubhatj@pwrog.com)  
Executive, Management & Steering Committees  
(412) 374-6788  
*Backup: Jim Molkenthin*

**Laura Genutis, Program Director**  
[genutill@pwrog.com](mailto:genutill@pwrog.com)  
Procedures Committee, International Operations  
(412) 374-4553  
*Backup: Damian Mirizio & Tom Laubham*

**Chad Holderbaum, Program Director**  
[holdercm@pwrog.com](mailto:holdercm@pwrog.com)  
Licensing, RMWG, NRC Interface,  
Emerging Issues Group, ASC-WEC Programs  
(412) 303-8610  
*Backup: Jay Boardman*

**Jordan Vavrek**  
[Vavrekji@pwrog.com](mailto:Vavrekji@pwrog.com)  
Senior Systems & Software Analyst  
PMO Database, Website Coordinator  
(412) 374-6202

**Carolyn Mahnick**  
[mahnicc@westinghouse.com](mailto:mahnicc@westinghouse.com)  
Project Specialist & Customer Logistics  
(724) 816-3020

**Darren Wood, Framatome Program Manager**  
[Darren.wood@framatome.com](mailto:Darren.wood@framatome.com)  
(434) 221-3975

**Dewey Olinski PE, PWR Owners Group**  
**Executive Director**  
[olinskdc@pwrog.com](mailto:olinskdc@pwrog.com)  
Executive Committee, Industry Relations,  
International Membership  
(412) 398-0167



**PMO Organization**  
**Pressurized Water Reactor**  
**Owners Group**

**Bernadette Degeye**  
[degeyemb@westinghouse.com](mailto:degeyemb@westinghouse.com)  
European Membership  
32-67-28-8247

**Yoneo Suzumegano** [Suzumey@westinghouse.com](mailto:Suzumey@westinghouse.com)  
Japanese Membership  
81-3-5532-2108

**Jim Molkenthin, Program Director**  
[molkenjp@pwrog.com](mailto:molkenjp@pwrog.com)  
Materials Committee & EPRI  
(860) 731-6727  
*Backup: Danielle Page-Blair & Laura Genutis*

**Jay Boardman, Program Director**  
[boardmjd@pwrog.com](mailto:boardmjd@pwrog.com)  
Systems & Equipment Committee  
I&C Working Group, Rod Control WG  
(724) 841-6855  
*Backup: Chad Holderbaum*

**Damian Mirizio, Program Director**  
[mirizids@pwrog.com](mailto:mirizids@pwrog.com)  
Risk Management Committee,  
RCP-RCS Working Group  
(412) -374-3494  
*Backup: Laura Genutis & Jay Boardman*

**Danielle Page Blair, Program Director**  
[Danielle.PageBlair@framatome.com](mailto:Danielle.PageBlair@framatome.com)  
Analysis Committee  
(434) 832-2382  
*Backup: Chad Holderbaum*

**Jim Andrachek, Program Director**  
[andracjd@westinghouse.com](mailto:andracjd@westinghouse.com)  
Global Engineering Services & Licensing  
(412) 496-9362

**Mary Jo Milberger**  
[milbermj@westinghouse.com](mailto:milbermj@westinghouse.com)  
PWROG Controller  
(412) 374-5271



# PWROG Top Focus Areas

- **Materials**

- Core Barrel OE
- Auxiliary Piping SCC OE

- **On-Line Monitoring**

- **Future of Tech Specs**

- **Risk**

- Newly Developed Methods
- Risk Assessment Process for Topical Reports (RAPTR)





# Continued Use of Process Improvements

- **Topical Report Process**
- **Desire to Restart Drop-In Visits**