



HITACHI

Pre-Submittal Meeting

GE Hitachi Licensing Topical Report BWRX-300 Severe Accident Management and Source Term Methodology

BWRX-300

Licensing Approach - Source Term

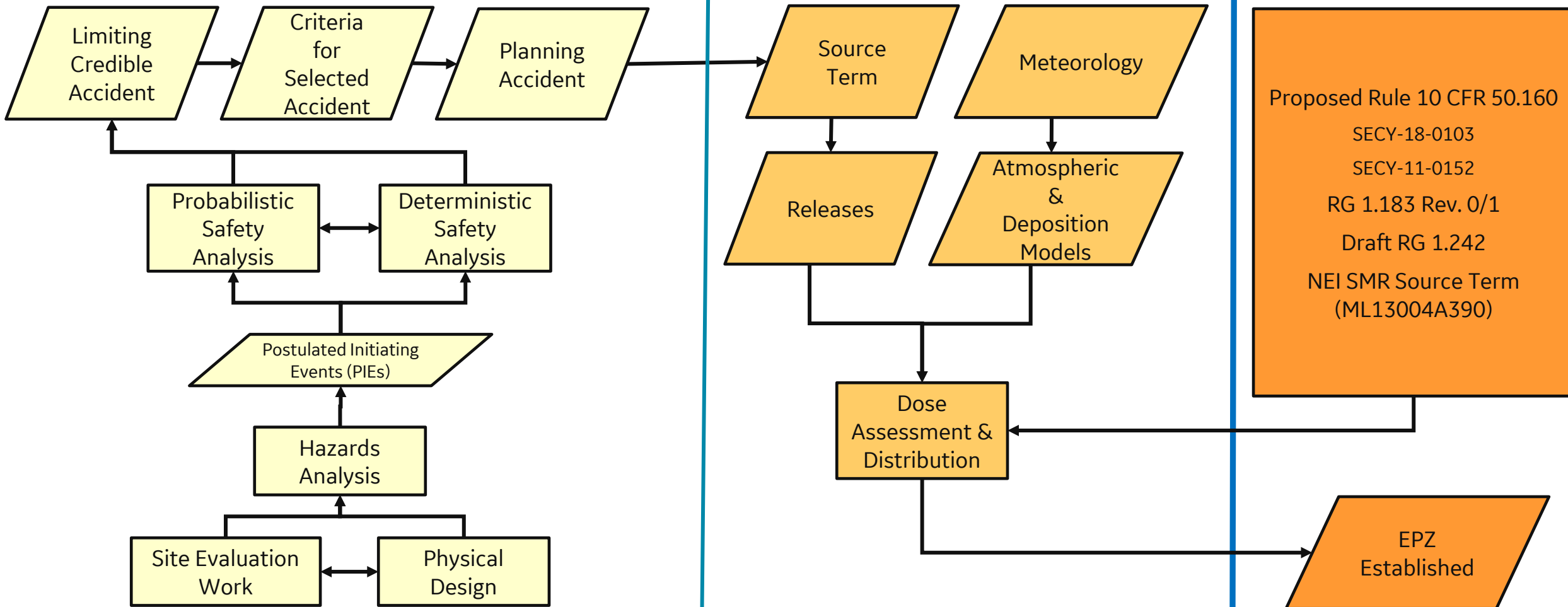
October 5, 2022

Licensing Approach - Source Term

Mechanistic Approach for Source Term Determination

Application of Other External Considerations to Source Term

Establishment of EPZ



Licensing Approach - Source Term & EPZ

- Use proposed rulemaking 10 CFR 50.160 “Emergency preparedness for small modular reactors, non-light-water reactors, and non-power production or utilization facilities”
- Draft guidance RG 1.242 “Performance-Based Emergency Preparedness for Small Modular Reactors, Non-Light-Water Reactors, and Non-Power Production or Utilization Facilities” to establish an Emergency Planning Zone at the site boundary
- Limiting DBA(s) tiered approach based on NEI Position Paper on Small Modular Reactor Source Terms (ML13004A390) to establish safety basis for the BWRX-300 design
- Low Severity Design Basis Accident (DBA) Methodology (Non-LOCA events, including line break accidents, and FHA) following RG 1.183

Questions or Comments