

Many Devils Wash Project

Shiprock, New Mexico, Disposal Site



Shiprock Disposal Site



Concrete Drop Structure



Many Devils Wash Upstream View

Why is the U.S. Department of Energy removing infrastructure at the former processing site?

The groundwater remediation system in Many Devils Wash (MDW) was installed in 2002 as a part of the groundwater compliance strategy outlined in the Final Ground Water Compliance Action Plan for Remediation at the Shiprock, New Mexico, UMTRA Site. Subsequent site investigation demonstrated that the contamination found in MDW groundwater is not mill-related, and therefore the groundwater remediation system components that are associated with that area are no longer needed. Groundwater remediation efforts continue in areas where there is mill-related contamination.

What type of items will be removed from Many Devils Wash?

The project will involve the removal of the remediation system consisting of subsurface drains, sump collection structures (concrete drop structure), piping/pump installations, transmission water pipeline, buried electrical conductors and buried data communication lines.

What will be done with the items once they are removed?

Waste and debris will be cleaned up in the project area. A project specific Waste Management Plan (WMP) identifies the types of solid waste streams, as well as the corresponding onsite management and offsite disposal to properly dispose of the waste. In support of federal sustainability goals, the WMP provides recommendations for waste minimization, pollution prevention, and waste diversion practices for the project generated waste. The project will divert as much waste as possible from going to the landfill through local recycling and reuse opportunities.

What will be done with the land when the infrastructure is removed?

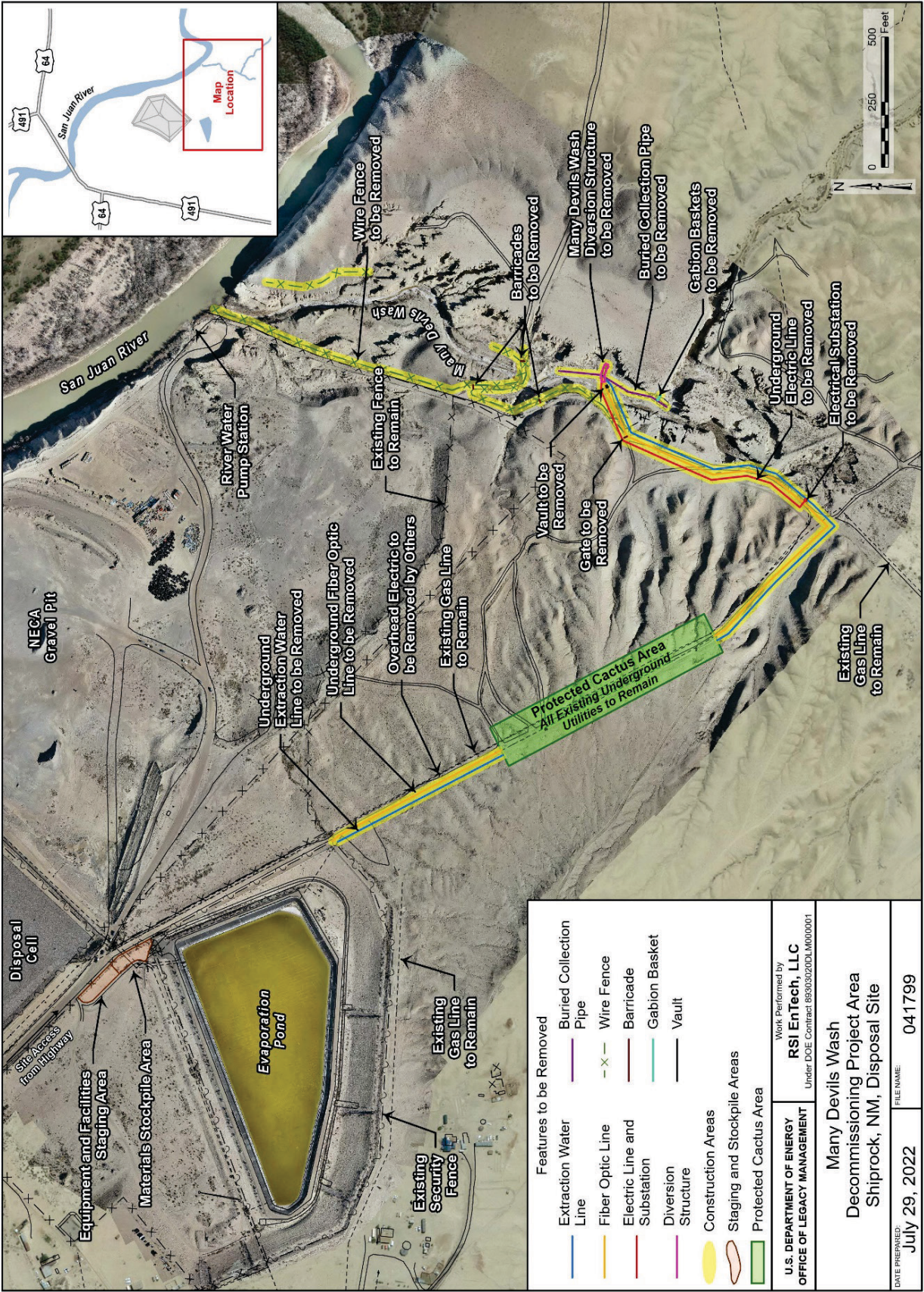
The project includes construction plans to regrade and revegetate the areas where infrastructure is removed. The land will be returned to the Shiprock community once reclamation is complete.

When is the work scheduled to begin and how long will it occur?

The project is scheduled to begin late October 2022 and end in December 2022.

Who can you contact for more information?

Please contact the LM Site Manager Mark Kautsky @ (970) 216-6462, or Mark.Kautsky@lm.doe.gov and ask about the Shiprock New Mexico, Disposal Site Drilling and Investigation Activities.



<p>Features to be Removed</p> <ul style="list-style-type: none"> Extraction Water Line Fiber Optic Line Electric Line and Substation Diversion Structure Construction Areas Staging and Stockpile Areas Protected Cactus Area 		<ul style="list-style-type: none"> Buried Collection Pipe Wire Fence Barricade Gabion Basket Vault 	
<p>U.S. DEPARTMENT OF ENERGY OFFICE OF LEGACY MANAGEMENT</p>		<p>Work Performed by RSI EnTech, LLC Under DOE Contract #99JG32ZDL1M000001</p>	
<p>Many Devils Wash Decommissioning Project Area Shiprock, NM, Disposal Site</p>		<p>DATE PREPARED: July 29, 2022</p>	
<p>FILE NAME: 041799</p>		<p>Existing Gas Line to Remain</p>	