



Department of Energy

Washington, DC 20585

WM-00058

Ms. Brittany Bolz
Attn: Document Control Desk
U.S. Nuclear Regulatory Commission
Mail Stop T8F5
Washington, DC 20555-0001

Subject: U.S. Department of Energy Office of Legacy Management Drilling and
Investigative Activities at the Shiprock, New Mexico, Disposal Site

Dear Ms. Bolz:

The U.S. Department of Energy (DOE) Office of Legacy Management (LM) is planning to remove equipment and infrastructure material no longer needed at the Shiprock, New Mexico, Disposal Site, October through December.

The removal of equipment and infrastructure material will occur in Many Devils Wash and the surrounding area. The outcome of the project will reduce DOE's area footprint and return Many Devils Wash to its natural state. Please see enclosed information sheet and map. The project is tentatively scheduled to begin Monday, October 24 and last approximately 12 weeks. The work will be performed by a Navajo sub-contractor with LM and LM contractor oversight.

LM has obtained all the approvals needed to move forward, and this notification is for informational purposes only.

For additional information on the Shiprock, New Mexico, Disposal Site, please visit <https://www.energy.gov/lm/office-legacy-management>.

Please contact me at (970) 248-6018 or Mark.Kautsky@lm.doe.gov, if you have any questions. Please address any correspondence to:

U.S. Department of Energy
Office of Legacy Management
2597 Legacy Way
Grand Junction, CO 81503

Sincerely,

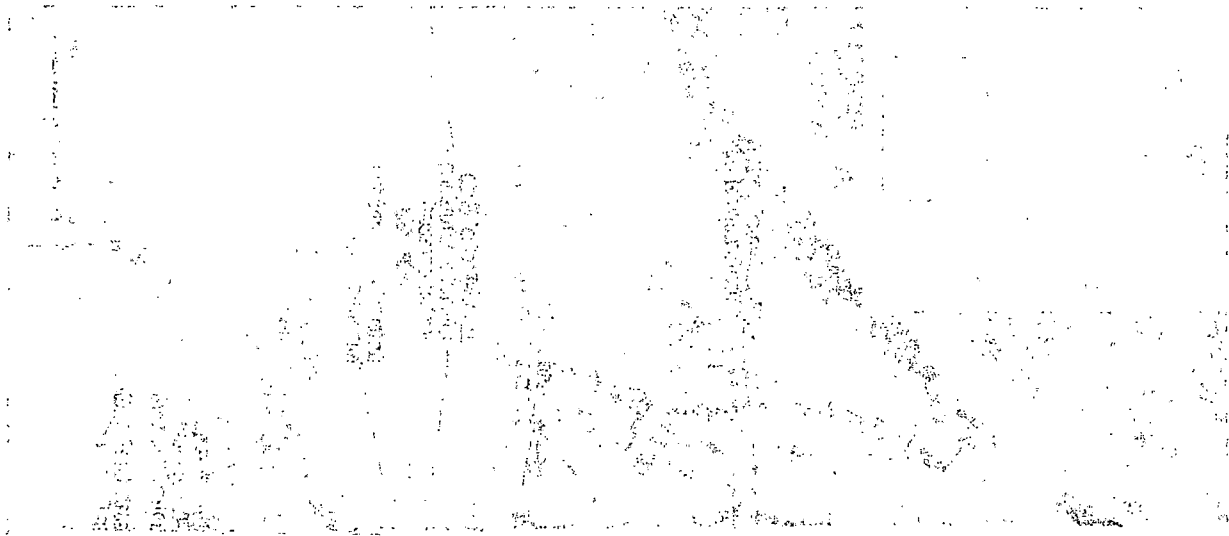
Mark Kautsky
UMTRCA Program Manager

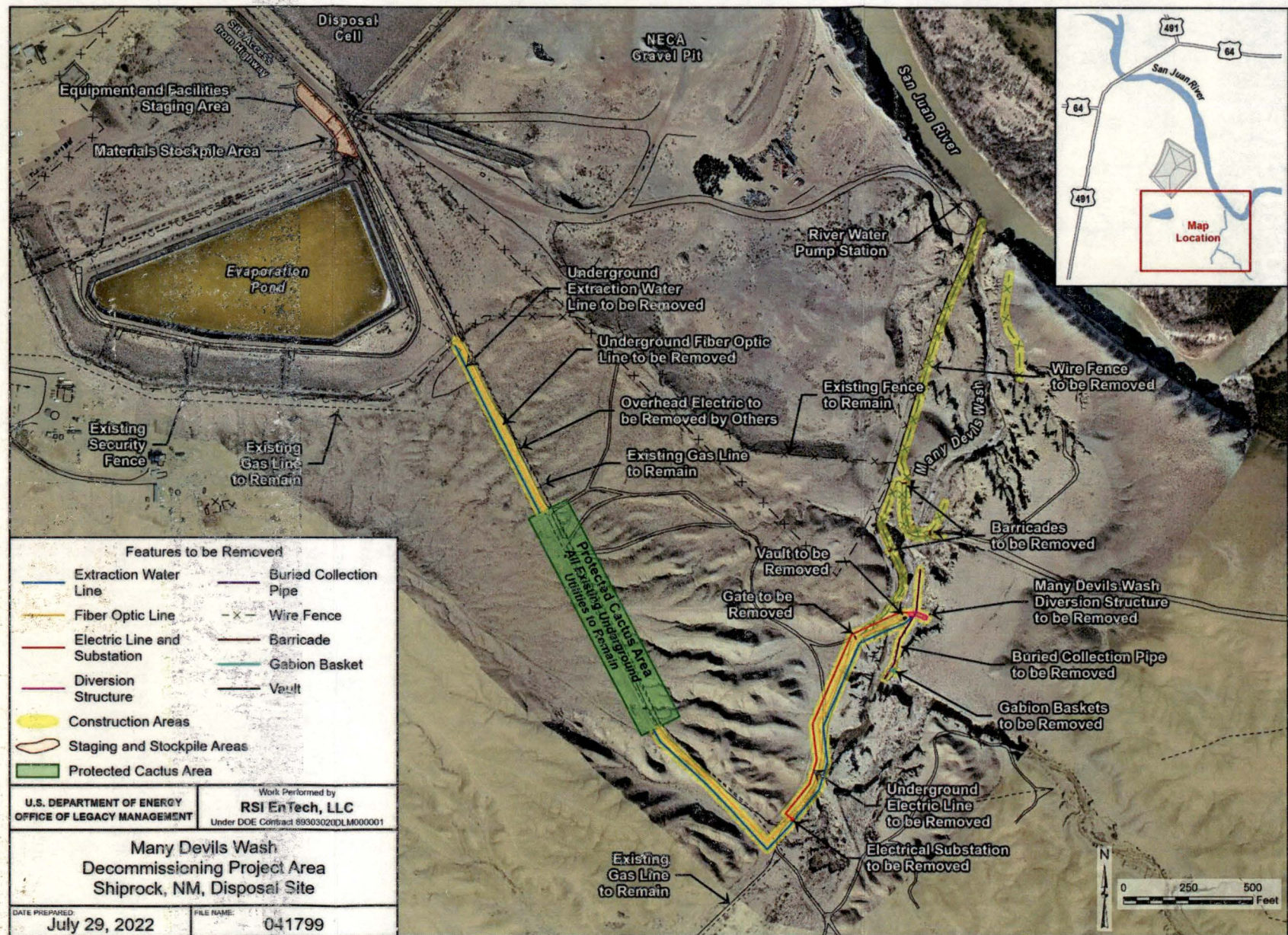
Enclosures

NM5501
NM55

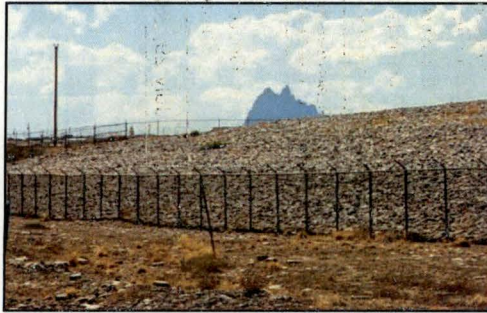


cc w/enclosures via email:
Joni Tallbull, DOE-LM
Kathleen Whysner, DOE-LM
Anthony Farinacci, RSI
Cameron Garcia, RSI
Jennifer Harris, RSI
DOE Read File
E/20/2277 F/20/830





Many Devils Wash Project Shiprock, New Mexico, Disposal Site



Aerial View of Disposal Site



Concrete Drop Structure



Many Devils Wash

Why is the U.S. Department of Energy removing infrastructure at the former processing site?

The MDW groundwater remediation system was installed in 2002 as a part of the groundwater compliance strategy outlined in the Final Ground Water Compliance Action Plan for Remediation at the Shiprock, New Mexico, UMTRA Site. Subsequent site investigation demonstrated that the contamination found in MDW groundwater is not mill-related, and therefore the groundwater remediation system components that are associated with that area are no longer needed. Groundwater remediation efforts continue in areas where there is mill-related contamination.

What type of items will be removed from Many Devils Wash?

The project will involve the removal of the remediation system consisting of subsurface drains, sump collection structures (concrete drop structure), piping/pump installations, transmission water pipeline, buried electrical conductors and buried data communication lines. T

What will be done with the items once they are removed?

Waste and debris will be cleaned up in the project area. There is a project specific Waste Management Plan (WMP) which identifies the types of solid waste streams to be generated, as well as the corresponding onsite management and offsite disposal required to properly dispose of the waste. In support of federal sustainability goals, the WMP provides recommendations for waste minimization, pollution prevention, and waste diversion practices for the project generated waste. The project will divert as much waste as possible from going to the landfill through local recycling and reuse opportunities.

What will be done with the land when the infrastructure is removed?

The project includes construction plans to regrade and revegetate the areas where infrastructure is removed. The land will be returned to the Shiprock Community once reclamation is complete.

When is the work scheduled to begin and how long will it occur?

The project is scheduled to begin the beginning of October and end in December 2022.

Who can you contact for more information?

Please contact the LM Site Manager Mark Kautsky @ (970) 216-6462, or Mark.Kautsky@lm.doe.gov and ask about the Shiprock New Mexico, Disposal Site Drilling and Investigation Activities.