

Commonwealth of Virginia Radiological Emergency Response Plan  
Appendix 1 – Direction and Control

7. Due to the varying nature and speed of the event scenario(s), flexibility and discretionary implementation of checklist items may be required to expedite notifications and actions. During a hostile action incident, actions may include:
- Providing public information/warning concerning law enforcement security area,
  - Providing VEST liaison local law enforcement security area assets and ESF13,
  - Convening a conference bridge line for stakeholders during PAD decision process,
  - Establishing a separate bridge line for key leaders to participate in decision making if they are not present in the EOC,
  - Including near-site Incident Command Post (ICP) on conference bridge line,
  - Notifying and deploying assets to support near-site ICP/Security Zone including VEST assets, ESF15, IMT, communications support, etc.,
  - Determining if Security Zone and lockdown have been established

Some items may be superseded by current mission requirements. Examples of this may include notification versus restriction notices to railways, notification to standby versus water route restrictions, and methods of communications altered to support information exchange.

8. Refer to the flowchart in Tab A for protective action decision-making during hostile actions or rapidly progressing events.

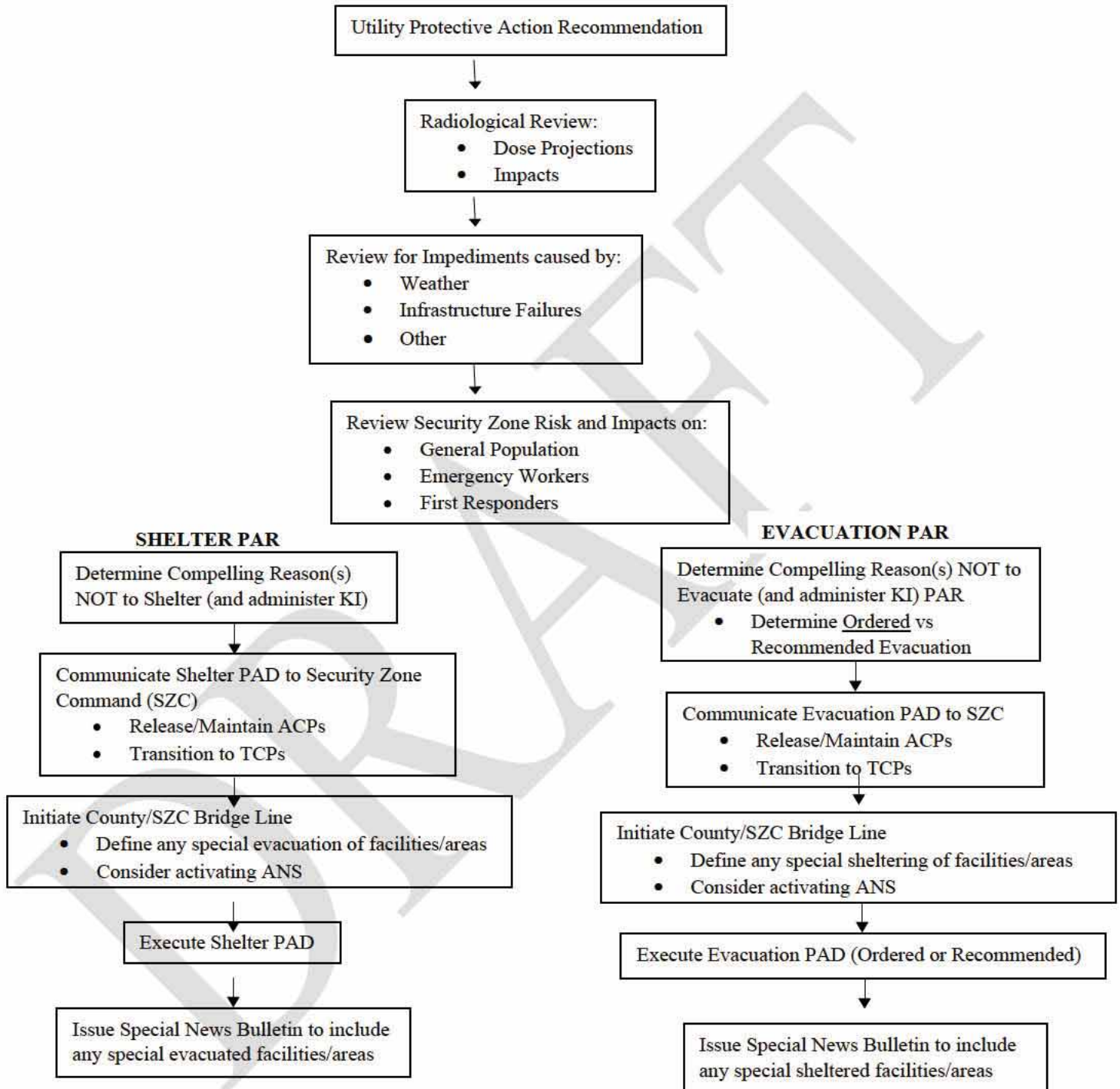
Attachments

- Tab A PAD Flowchart Based on Hostile Actions or Rapidly Escalating Incidents  
Tab B Virginia EOC Action Checklists  
Tab C State On-Scene Coordinator Checklist

Commonwealth of Virginia Radiological Emergency Response Plan  
Appendix 1 – Direction and Control

**Tab A to Appendix 1**

**Protective Action Decision Flowchart  
Based on Hostile Action or Rapidly Escalating Incidents**



Commonwealth of Virginia Radiological Emergency Response Plan  
Appendix 1 – Direction and Control

**Tab B to Appendix 1**

**Virginia EOC Action Checklists**

Checklists for nuclear power plant accident operations are listed for each applicable ECL. Some positions do not have responsibilities at the Unusual Event ECL. Some positions have different actions for North Anna Power Station and Surry Power Station. Checklists are given for the following positions:

- Operations Chief
- Plans Chief
- External Affairs Chief
- Situational Awareness Unit
- VDEM REPP Advisor
  - Radiological Program Manager
  - Radiological Planner
- VDH Radiological Health Planner
- VEST Team Lead



Commonwealth of Virginia Radiological Emergency Response Plan  
Appendix 1 – Direction and Control

### Operations Chief - Unusual Event

Step	Time Completed	Action		
102		Consider VEST Conference Call (on call Team & Team D)		
104		If required, create an event in the crisis management system		
105		If required, conduct VEST Conference Call		
Conducted by:		Position/Title:	Signed:	Date:
Approved by:		Position/Title:	Signed:	Date:

### Operations Chief - Alert

Step	Time Completed	Action		
202		Consider Incident VEST Conference Call (on call Team & Team D)		
203		If required, transmit SWAN Alert to VEST (on call and Team D), VDEM REPP Advisor (Radiological Program Manager and Radiological Planner), VDEM Radiological Protection Officer, and VDH Radiological Health Planner to participate in VEST conference call. Include Dominion Representative.		
204		Create an event in the crisis management system		
205		If required, conduct VEST Conference Call		
220		Upon notification of Declaration of a State of Emergency, direct Situational Awareness Unit to send a SWAN Alert message to "VEST SIGNIFICANT EVENT" Group and transmit a VCIN notification.		
Conducted by:		Position/Title:	Signed:	Date:
Approved by:		Position/Title:	Signed:	Date:



Commonwealth of Virginia Radiological Emergency Response Plan  
Appendix 1 – Direction and Control

**Operations Chief – Site Area Emergency – Surry Power Station**

Step	Time Completed	Action		
302		Consider Incident VEST (on-call Team and Team D) Conference Call		
303		If required, transmit SWAN Alert to VEST (on call and Team D), VDEM REPP Advisor (Radiological Program Manager and Radiological Planner), VDEM Radiological Protection Officer, VDH Radiological Health Planner to participate in VEST conference call. Include Dominion Representative.		
304		If required, create an event in the crisis management system		
305		If required, conduct VEST Conference Call		
321		Upon notification of Declaration of a State of Emergency, direct the Situational Awareness Unit to send a SWAN Alert message to “VEST SIGNIFICANT EVENT” Group and transmit a VCIN notification.		
329		Contact: Fort Eustis Command Duty Officer [REDACTED]		
		North Carolina Emergency Operations Center [REDACTED]		
		Coast Guard Sector Hampton Roads [REDACTED] request establish a safety zone on the James River in the vicinity of the Surry Power Station until otherwise notified. Convey decision to PIO for dissemination to the public		
		Federal Aviation Administration [REDACTED] to request a Temporary Flight Restriction (TFR) in the vicinity and downwind of the Surry Power Station until further notice. Convey decision to PIO for dissemination to the public		
		Norfolk Southern Corporation to request the termination of rail service in the affected area until further notice [REDACTED] Convey decision to PIO for dissemination to public		
		CSX Corporation, request the termination of rail service in the affected area until further notice [REDACTED] Convey decision to PIO for dissemination to the public		
		VDOT, Jamestown-Scotland Ferry, request termination of operations or limiting operations to emergency vehicles only. Convey decision to PIO for dissemination to public		
330		Consider whether the Department of Conservation and Recreation, and request clearing of state parks (Chippokes Park). Convey decision to PIO for dissemination to the public		
Conducted by:		Position/Title:	Signed:	Date:
Approved by:		Position/Title:	Signed:	Date:

Commonwealth of Virginia Radiological Emergency Response Plan  
Appendix 1 – Direction and Control

**Operations Chief – Site Area Emergency – North Anna Power Station**

Step	Time Completed	Action		
302		Consider VEST (on-call Team and Team D) Conference Call		
303		If required, transmit SWAN Alert to VEST (on call and Team D), VDEM REPP Advisor (Radiological Program Manager and Radiological Planner), VDEM Radiological Protection Officer, VDH Radiological Health Planner to participate in VEST conference call. Include Dominion Representative.		
304		If required, create an event in the crisis management system		
305		If required, conduct VEST Conference Call		
321		Upon notification of Declaration of a State of Emergency, direct the Situational Awareness Unit to send SWAN Alert message to “VEST SIGNIFICANT EVENT” Group and transmit a VCIN notification.		
332		Contact: Maryland Emergency Operations Center [REDACTED]		
		Federal Aviation Administration [REDACTED] request Temporary Flight Restriction in the vicinity and downwind of the North Anna Power Station until further notice. Convey decision to PIO for dissemination to the public		
		Department of Wildlife Resources [REDACTED], request clearing of Lake Anna Park. Convey decision to PIO for dissemination to the public		
		CSX Corporation, request the termination of rail service in the affected area until further notice [REDACTED] Convey decision to PIO for dissemination to the public		
333		US Coast Guard & Department of Wildlife Resources [REDACTED] Department of Conservation and Recreation and request clearing of state lakes and parks (Lake Anna & Lake Anna Park). Convey decision to PIO for dissemination to the public		
Conducted by:		Position/Title:	Signed:	Date:
Approved by:		Position/Title:	Signed:	Date:



Commonwealth of Virginia Radiological Emergency Response Plan  
Appendix 1 – Direction and Control

**Operations Chief – General Emergency – Surry Power Station**

Step	Time Completed	Action		
402		Consider VEST (on-call Team and Team D) Conference Call		
404		If required, conduct VEST Conference Call		
406		If required, create an event in the crisis management system		
420		Upon notification of Declaration of a State of Emergency, direct the Situational Awareness Unit to send a SWAN Alert message to “VEST SIGNIFICANT EVENT” Group and transmit a VCIN notification.		
435		Contact: Fort Eustis Command Duty Officer [REDACTED]		
		North Carolina Emergency Operations Center [REDACTED]		
		Coast Guard Sector Hampton Roads [REDACTED] request establish a safety zone on the James River in the vicinity of the Surry Power Station until otherwise notified. Convey decision to PIO for dissemination to the public.		
		Federal Aviation Administration [REDACTED] request Temporary Flight Restriction in the vicinity and downwind of the Surry Power Station until further notice. Convey decision to PIO for dissemination to the public.		
		Norfolk Southern Corporation, request the termination of rail service in the affected area until further notice [REDACTED] Convey decision to PIO for dissemination to public.		
		CSX Corporation, request the termination of rail service in the affected area until further notice [REDACTED] Convey decision to PIO for dissemination to the public.		
		Department of Conservation and Recreation and request clearing of state parks (Chippokes Park). Convey decision to PIO for dissemination to the public.		
		VDOT, Jamestown-Scotland Ferry, request termination of operations or limiting operations to emergency vehicles only. Convey decision to PIO for dissemination to public.		
Conducted by:		Position/Title:	Signed:	Date:
Approved by:		Position/Title:	Signed:	Date:



Commonwealth of Virginia Radiological Emergency Response Plan  
Appendix 1 – Direction and Control

**Operations Chief – General Emergency – North Anna Power Station**

Step	Time Completed	Action		
402		Conduct Incident VEST (on-call Team and Team D) Conference Call		
404		If required, conduct VEST Conference Call		
406		If required, create an event in the crisis management system		
420		Upon notification of Declaration of a State of Emergency, direct the Situational Awareness Unit to send a SWAN Alert message to “VEST SIGNIFICANT EVENT” Group and transmit a VCIN notification.		
436		Contact: Maryland Emergency Operations Center [REDACTED]		
		Federal Aviation Administration [REDACTED] request Temporary Flight Restriction in the vicinity and downwind of the North Anna Power Station until further notice. Convey decision to PIO for dissemination to the public.		
		CSX Corporation, request the termination of rail service in the affected area until further notice [REDACTED] Convey decision to PIO for dissemination to the public.		
437		Contact US Coast Guard & Department of Wildlife Resources [REDACTED] [REDACTED] Department of Conservation and Recreation and request clearing of state lakes and parks (Lake Anna & Lake Anna Park). Convey decision to PIO for dissemination to the public.		
Conducted by:		Position/Title:	Signed:	Date:
Approved by:		Position/Title:	Signed:	Date:

Commonwealth of Virginia Radiological Emergency Response Plan  
Appendix 1 – Direction and Control

**Plans Chief-Alert**

Step	Time Completed	Action		
212		Transmit spot report		
221		Determine local Emergency Assembly Center (EAC) and Emergency Operations Center (EOC) status		
222		Provide situational awareness update to the VEST		
Conducted by:		Position/Title:	Signed:	Date:
Approved by:		Position/Title:	Signed:	Date:

**Plans Chief-Site Area Emergency**

Step	Time Completed	Action		
312		Transmit spot report		
322		Determine local Emergency Assembly Center (EAC) and Emergency Operations Center (EOC) status		
323		Provide situational awareness update to VEST		
327		Upon receipt of Protective Action Recommendation (PAR), Protective Action Task Force meets to provide recommendations and guidance to VEST Coordinator for consideration		
Conducted by:		Position/Title:	Signed:	Date:
Approved by:		Position/Title:	Signed:	Date:

Commonwealth of Virginia Radiological Emergency Response Plan  
Appendix 1 – Direction and Control

**Plans Chief-General Emergency**

<b>Step</b>	<b>Time Completed</b>	<b>Action</b>		
406		If required, create an event in the crisis management system		
412		Transmit spot report		
421		Determine local Emergency Assembly Center (EAC) and Emergency Operations Center (EOC) status		
422		Provide situational awareness update to VEST		
425		Upon receipt of Protective Action Recommendation (PAR), Protective Action Task Force meet to provide recommendations and guidance to VEST Coordinator for consideration.		
438		Report status of evacuation and sheltering activities and update staff as needed		
445		Provide situational awareness update to the VEST		
<b>Conducted by:</b>		<b>Position/Title:</b>	<b>Signed:</b>	<b>Date:</b>
<b>Approved by:</b>		<b>Position/Title:</b>	<b>Signed:</b>	<b>Date:</b>



Commonwealth of Virginia Radiological Emergency Response Plan  
Appendix 1 – Direction and Control

**External Affairs Chief-Alert**

Step	Time Completed	Action		
213		Alert Governor's Press Secretary		
		Staff VEOC Joint Information Center (JIC)		
		Open the Virginia Public Inquiry Center by contacting Virginia 2-1-1		
		Request External Affairs staff from Dominion Energy to report to the JIC [REDACTED]		
214		Confirm that Dominion has drafted and sent "Alert" news release		
215		Coordinate with VDACS to ensure the “stored feed and covered water” news release for Livestock (if recommended by Virginia Department of Health, Office of Radiological Health) has been drafted for dissemination when deemed appropriate		
217		Contact local government PIOs and FEMA Region III PIO		
218		Coordinate with Dominion and state partners on the potential for holding a news briefing		
Conducted by:		Position/Title:	Signed:	Date:
Approved by:		Position/Title:	Signed:	Date:

Commonwealth of Virginia Radiological Emergency Response Plan  
Appendix 1 – Direction and Control

### External Affairs Chief-Site Area Emergency

Step	Time Completed	Action
313		Alert Governor's Press Secretary
		Staff VEOC Joint Information Center (JIC)
		Open the Virginia Public Inquiry Center by contacting Virginia 2-1-1
		Request External Affairs staff from Dominion Energy to report to the JIC [REDACTED]
314		Contact Local Government PIOs and FEMA Region III PIO
315		Confirm that Dominion has drafted and sent "Site Area Emergency" news release
316		Coordinate with VDACS to ensure the "stored feed and covered water" news release for Livestock (if recommended by Virginia Department of Health, Office of Radiological Health) has been drafted for dissemination when deemed appropriate
318		Consider sending out an EAS message
319		Coordinate with Dominion and state partners on the potential for holding a news briefing
331		<p>Confirm that the following news releases are being considered:</p> <ul style="list-style-type: none"> <li>• Suspension of Jamestown-Scotland Ferry service (Virginia Department of Transportation (VDOT)) – <b><u>SPS Only</u></b></li> <li>• Clearing of the James River in the vicinity of Surry Nuclear Power Station (US Coast Guard) – <b><u>SPS Only</u></b></li> <li>• Closure of Lake Anna (Department of Wildlife Resources (DWR)) – <b><u>NAPS Only</u></b></li> <li>• Flight restrictions (Virginia Department of Aviation (DOAV)/FAA)</li> <li>• Rail service termination (Virginia Department of Rail and Public Transportation (DRPT))</li> <li>• State parks closure news release(s) as needed (Virginia Department of Conservation and Recreation (DCR))</li> </ul>
Conducted by:		Position/Title: Signed: Date:
Approved by:		Position/Title: Signed: Date:

Commonwealth of Virginia Radiological Emergency Response Plan  
Appendix 1 – Direction and Control

**External Affairs Chief-General Emergency**

Step	Time Completed	Action
413		Alert Governor's Press Secretary
		Staff VEOC Joint Information Center (JIC)
		Open the Virginia Public Inquiry Center by contacting Virginia 2-1-1
		Request External Affairs staff from Dominion Energy to report to the JIC [REDACTED]
414		Confirm that Dominion has drafted and sent "General Emergency" news release
415		Contact Local Government PIOs and FEMA Region III PIO
416		Coordinate with Dominion and state partners on the potential for holding a news briefing
418		Coordinate with VDACS to ensure the "stored feed and covered water" news release for Livestock (if recommended by Virginia Department of Health, Office of Radiological Health) has been drafted for dissemination when deemed appropriate
430		Draft and send EAS message and news release. Ensure all necessary and related press releases contain the PAD.
434		<del>Send EAS news release</del>
436		<del>Ensure all necessary and related press releases contain the PAD</del>
440		<p>Confirm that the following news releases are being considered:</p> <ul style="list-style-type: none"> <li>• Suspension of Jamestown-Scotland Ferry service (Virginia Department of Transportation (VDOT)) – <b><u>SPS Only</u></b></li> <li>• Clearing of the James River in the vicinity of Surry Nuclear Power Station (US Coast Guard) – <b><u>SPS Only</u></b></li> <li>• Closure of Lake Anna (Department of Wildlife Resources (DWR)) – <b><u>NAPS Only</u></b></li> <li>• Flight restrictions (Virginia Department of Aviation (DOAV)/FAA)</li> <li>• Rail service termination (Virginia Department of Rail and Public Transportation (DRPT))</li> <li>• State parks closure news release(s) as needed (Virginia Department of Conservation and Recreation (DCR))</li> </ul>
447		<p>If needed, ensure VDH has drafted KI news release</p> <p>Draft the EAS message</p> <p>Ensure all necessary and related press releases contain the PAD</p>
451		If needed, ensure VDH has sent KI news release
Conducted by:		Position/Title: Signed: Date:



Commonwealth of Virginia Radiological Emergency Response Plan  
Appendix 1 – Direction and Control

<b>Approved by:</b>	<b>Position/Title:</b>	<b>Signed:</b>	<b>Date:</b>

DRAFT

Commonwealth of Virginia Radiological Emergency Response Plan  
Appendix 1 – Direction and Control

**Situational Awareness Unit - Unusual Event**

Step	Time Completed	Action		
100		Receive Emergency Notification Form via DEENS for Notification of Unusual Event		
		Enter into crisis management system, as appropriate		
101		Transmit SWAN Alert to applicable “Emergency Notification North Anna or Surry NPS” and “All VDEM” including situation and incident specific information		
103		If required, transmit SWAN Alert to VEST (on call and Team D), VDEM REPP Advisor (Radiological Program Manager and Radiological Planner, VDEM Radiological Protection Officer, and VDH Radiological Health Planner to participate in VEST conference call. Include Dominion Representative		
107		Notify FEMA Region III Watch Officer [REDACTED]		
108		Upon incident closure, transmit SWAN Alert to “Emergency Notification North Anna or Surry NPS” and “All VDEM”		
109		Document all information and notifications in the crisis management system		
Conducted by:		Position/Title:	Signed:	Date:
Approved by:		Position/Title:	Signed:	Date:

Commonwealth of Virginia Radiological Emergency Response Plan  
Appendix 1 – Direction and Control

**Situational Awareness Unit - Alert**

Step	Time Completed	Action		
200		Receive Emergency Notification Form via DEENS for Alert		
		Enter into crisis management system, as appropriate		
201		Transmit SWAN Alert to applicable “Emergency Notification North Anna or Surry NPS” and “All VDEM” including situation and incident specific information		
203		If required, transmit SWAN Alert to VEST (on call and Team D), VDEM REPP Advisor (Radiological Program Manager and Radiological Planner), VDEM Radiological Protection Officer, and VDH Radiological Health Planner to participate in VEST conference call. Include Dominion Representative		
207		Notify FEMA Region III Watch Officer ( )		
208		Confirm VDEM State On-Scene Coordinator en route to the CERC		
		Confirm VDEM Radiological Protection Officer en route to the CERC		
209		Verify arrival of VDEM State On-Scene Coordinator at the CERC		
210		Verify arrival of VDEM Radiological Protection Officer at the CERC		
226		Upon incident closure, transmit SWAN Alert to “Emergency Notification North Anna or Surry NPS” and “All VDEM”		
227		Document all information and notifications in the crisis management system		
Conducted by:		Position/Title:	Signed:	Date:
Approved by:		Position/Title:	Signed:	Date:



Commonwealth of Virginia Radiological Emergency Response Plan  
Appendix 1 – Direction and Control

**Situational Awareness Unit – Site Area Emergency**

Step	Time Completed	Action		
300		Receive Emergency Notification Form via DEENS for Site Area Emergency		
		Enter into crisis management system, as appropriate		
301		Transmit SWAN Alert to applicable “Emergency Notification North Anna or Surry NPS” and “All VDEM” including situation and incident specific information		
		Notify ingestion pathway jurisdictions of Site Area Emergency		
303		If required, transmit SWAN Alert to VEST (on call and Team D), VDEM REPP Advisor (Radiological Program Manager and Radiological Planner), VDEM Radiological Protection Officer, and VDH Radiological Health Planner to participate in VEST conference call. Include Dominion Representative		
307		Notify FEMA Region III Watch Officer: [REDACTED]		
308		Confirm VDEM State On-Scene Coordinator en route to the CERC		
		Confirm VDEM Radiological Protection Officer en route to the CERC		
309		Verify arrival of VDEM State On-Scene Coordinator at the CERC		
310		Verify arrival of VDEM Radiological Protection Officer at the CERC		
321		Upon notification of Declaration of a State of Emergency, direct the Situational Awareness Unit to send SWAN Alert message to “VEST SIGNIFICANT EVENT” Group and transmit a VCIN notification.		
336		Upon incident closure, transmit SWAN Alert to “Emergency Notification North Anna or Surry NPS” and “All VDEM”		
337		Document all information and notifications in the crisis management system		
Conducted by:		Position/Title:	Signed:	Date:
Approved by:		Position/Title:	Signed:	Date:

Commonwealth of Virginia Radiological Emergency Response Plan  
Appendix 1 – Direction and Control

**Situational Awareness Unit – General Emergency**

Step	Time Completed	Action
400		Receive Emergency Notification Form via DEENS for General Emergency
		Enter into crisis management system, as appropriate
401		Transmit SWAN Alert to applicable “Emergency Notification North Anna or Surry NPS” and “All VDEM” including situation and incident specific information
		Notify ingestion pathway jurisdictions of General Emergency
403		If required, transmit SWAN Alert to VEST (on call and Team D), VDEM REPP Advisor (Radiological Program Manager and Radiological Planner), VDEM Radiological Protection Officer, and VDH Radiological Health Planner to participate in VEST conference call. Include Dominion Representative
407		Notify FEMA Region III Watch Officer [REDACTED]
408		Confirm VDEM State On-Scene Coordinator en route to the CERC
		Confirm VDEM Radiological Protection Officer en route to the CERC
409		Verify arrival of VDEM State On-Scene Coordinator at CERC
410		Verify arrival of VDEM Radiological Protection Officer at CERC
420		Upon notification of Declaration of a State of Emergency, direct the Situational Awareness Unit to send a SWAN Alert message to “VEST SIGNIFICANT EVENT” Group and transmit a VCIN notification.
427		Notify affected localities of impending PAR conference call (use “REPORT OF CONFERENCE CALL” form)
428		Upon receipt of “REPORT OF PROTECTIVE ACTION RECOMMENDATIONS” form, conduct conference call with affected localities
431		Upon receipt of “REPORT OF PROTECTIVE ACTION DECISION” form, conduct conference call with affected localities
432		Activate the alert and notification system (IPAWS) and transmit WEA, EAS, and Everbridge Resident Connect messages for PAD. Utilize alternates if necessary.
433		Verify WEA message for PAD was successful and confirm result to VEOC through the VDEM REPP Advisor.
444		Upon receipt of “REPORT OF KI DECISION AND ADMINISTRATION” form, conduct conference call with affected localities.
448		If needed, transmit WEA, EAS, and Everbridge Resident Connect messages for KI Decision. Utilize alternate if necessary.

Commonwealth of Virginia Radiological Emergency Response Plan  
Appendix 1 – Direction and Control

449		If needed, Verify WEA for KI Decision was successful and confirm result to VEOC through the VDEM REPP Advisor (Radiological Program Manager and/or Radiological Planner)	
453		If needed, verify WEA and EAS for KI Decision were successful and confirm results to VEOC through the VDEM REPP Advisors.	
453		Upon incident closure, transmit SWAN alert to applicable “Emergency Notification North Anna or Surry NPS” and “All VDEM”	
454		Document all information and notifications in the crisis management system	
<b>Conducted by:</b>		<b>Position/Title:</b>	<b>Signed:</b>
<b>Approved by:</b>		<b>Position/Title:</b>	<b>Signed:</b>



Commonwealth of Virginia Radiological Emergency Response Plan  
Appendix 1 – Direction and Control

**VDEM REPP Advisor-Site Area Emergency**

Step	Time Completed	Action		
327		Upon receipt of Protective Action Recommendation (PAR), Protective Action Task Force meets to provide recommendations and guidance to VEST Coordinator for consideration		
Conducted by:		Position/Title:	Signed:	Date:
Approved by:		Position/Title:	Signed:	Date:

Commonwealth of Virginia Radiological Emergency Response Plan  
Appendix 1 – Direction and Control

**VDEM REPP Advisor-General Emergency**

Step	Time Completed	Action	
427		Notify affected localities of impending PAR conference call (use "REPORT OF CONFERENCE CALL" form)	
428		Upon receipt of "REPORT OF PROTECTIVE ACTION RECOMMENDATIONS" form, conduct conference call with affected localities	
431		Upon receipt of "REPORT OF PROTECTIVE ACTION DECISION" form, conduct conference call with affected localities.	
434		Notify State On-Scene Coordinator of PAD and ANS activation time	
443		Convene Protective Action Task Force to share Health Commissioner's Potassium Iodide (KI) decision if needed	
444		Upon receipt of "REPORT OF KI DECISION AND ADMINISTRATION" form, conduct conference call with affected localities.	
446		If needed, notify State On-Scene Coordinator of KI decision and imminent public notification.	
450		Verify ANS for KI Decision were successful and confirm results to VEST Team Lead.	
<b>Conducted by:</b>		<b>Position/Title:</b>	<b>Signed:</b>
			<b>Date:</b>
<b>Approved by:</b>		<b>Position/Title:</b>	<b>Signed:</b>
			<b>Date:</b>

Commonwealth of Virginia Radiological Emergency Response Plan  
Appendix 1 – Direction and Control

### VDH Radiological Health Planner-Alert

Step	Time Completed	Action		
211		Verify Staff Deployed to:		
		Virginia Emergency Operations Center (VEOC)		
		State Staging Area		
		Corporate Emergency Response Center (CERC)		
		Emergency Coordination Center for Public Health (ECC), when activated		
216		If warranted, consider stored feed and covered water recommendation and coordinate with Virginia Department of Agriculture and Consumer Services/Public Relations Director to send out “stored feed and covered water” news release for livestock		
224		Confirm Department of Energy (DOE)/National Nuclear Safety Administration (NNSA) EOC has been alerted [REDACTED] alternatively, DOE Operations Center –Oak Ridge [REDACTED]		
225		Request DOE prepare to deploy a Radiological Assistance Program (RAP) Team thru DOE/NNSA EOC [REDACTED] alternatively, call RAP directly [REDACTED]		
		Consider requesting Federal Radiological Monitoring & Assessment Center (FRMAC) Phase 1 Consequence Management Response Team (CMRT) through DOE/NNSA EOC [REDACTED] Alternatively, call FEMA Region III Watch Center [REDACTED] determine and coordinate facility requirements to accommodate FRMAC		
		Consider assistance request for plume modeling; if needed, contact Aerial Measurement Systems (AMS) for flyover and/or National Atmospheric Release Advisory Center (NARAC) through DOE/NNSA EOC [REDACTED] [REDACTED] alternatively, call FEMA Region III Watch Center [REDACTED]		
Conducted by:		Position/Title:	Signed:	Date:
Approved by:		Position/Title:	Signed:	Date:



Commonwealth of Virginia Radiological Emergency Response Plan  
Appendix 1 – Direction and Control

### VDH Radiological Health Planner-Site Area Emergency

Step	Time Completed	Action		
311		Verify Staff Deployed to:		
		Virginia Emergency Operations Center (VEOC)		
		State Staging Area		
		Corporate Emergency Response Center (CERC)		
		Emergency Coordination Center for Public Health (ECC)		
317		Consider stored feed and covered water recommendation and coordinate with Virginia Department of Agriculture and Consumer Services/Public Relations Director to send out “stored feed and covered water” news release for livestock		
325		Confirm Department of Energy (DOE)/National Nuclear Safety Administration (NNSA) EOC has been alerted [REDACTED] alternatively, DOE Operations Center –Oak Ridge [REDACTED]		
326		Request DOE prepare to deploy a Radiological Assistance Program (RAP) Team thru DOE/NNSA EOC [REDACTED] alternatively, call RAP directly [REDACTED]		
		Consider requesting Federal Radiological Monitoring & Assessment Center (FRMAC) Phase 1 Consequence Management Response Team (CMRT) through DOE/NNSA EOC [REDACTED] alternatively, call FEMA Region III Watch Center [REDACTED] determine and coordinate facility requirements to accommodate FRMAC		
		Consider assistance request for plume modeling; if needed, contact Aerial Measurement Systems (AMS) for flyover and/or National Atmospheric Release Advisory Center (NARAC) through DOE/NNSA EOC [REDACTED] [REDACTED] alternatively, call FEMA Region III Watch Center [REDACTED]		
Conducted by:		Position/Title:	Signed:	Date:
Approved by:		Position/Title:	Signed:	Date:

Commonwealth of Virginia Radiological Emergency Response Plan  
Appendix 1 – Direction and Control

**VDH Radiological Health Planner-General Emergency**

Step	Time Completed	Action		
411		Verify Staff Deployed to: Virginia Emergency Operations Center (VEOC)		
		State Staging Area		
		Corporate Emergency Response Center (CERC)		
		Emergency Coordination Center for Public Health (ECC)		
417		Consider stored feed and covered water recommendation and coordinate with Virginia Department of Agriculture and Consumer Services/Public Relations Director to send out“stored feed and covered water” news release for livestock		
424		Confirm Department of Energy (DOE)/National Nuclear Safety Administration (NNSA) EOC has been alerted [REDACTED]; alternatively, DOE Operations Center –Oak Ridge [REDACTED]		
		Request DOE prepare to deploy a Radiological Assistance Program (RAP) Team thru DOE/NNSA EOC [REDACTED]; alternatively, call RAP directly [REDACTED]		
		Consider requesting Federal Radiological Monitoring & Assessment Center (FRMAC) Phase 1 Consequence Management Response Team (CMRT) through DOE/NNSA EOC [REDACTED]; alternatively, call FEMA Region III Watch Center [REDACTED]; determine and coordinate facility requirements to accommodate FRMAC		
		Consider assistance request for plume modeling; if needed, contact Aerial Measurement Systems (AMS) for flyover and/or National Atmospheric Release Advisory Center (NARAC) through DOE/NNSA EOC [REDACTED]; alternatively, call FEMA Region III Watch Center [REDACTED]		
439		Obtain off-site radiation monitoring and detection activity results		
441		Determine if radiation sample results meet Potassium Iodide (KI) administration threshold and advise Health Commissioner.		
442		Obtain Health Commissioner recommendation on the administration of KI		
Conducted by:		Position/Title:	Signed:	Date:
Approved by:		Position/Title:	Signed:	Date:

Commonwealth of Virginia Radiological Emergency Response Plan  
Appendix 1 – Direction and Control

### VEST Team Lead - Unusual Event

Step	Time Completed	Action		
102		Consider VEST Conference Call (on call Team & Team D)		
105		If required, conduct VEST Conference Call		
106		Change VEOC status to "Increased Readiness"		
Conducted by:		Position/Title:	Signed:	Date:
Approved by:		Position/Title:	Signed:	Date:

### VEST Team Lead - Alert

Step	Time Completed	Action		
202		Consider Incident VEST Conference Call (on call Team & Team D)		
205		If required, conduct VEST Conference Call		
206		Consider VEOC status change to Yellow "Increased Readiness" in accordance with VEST SOG.		
219		Consider request to Governor for Declaration of a State of Emergency		
223		Update FEMA Region III Watch Officer [REDACTED]		
Conducted by:		Position/Title:	Signed:	Date:
Approved by:		Position/Title:	Signed:	Date:



Commonwealth of Virginia Radiological Emergency Response Plan  
Appendix 1 – Direction and Control

**VEST Team Lead – Site Area Emergency**

Step	Time Completed	Action		
302		Consider Incident VEST Conference Call (on call Team &Team D)		
305		If required, conduct VEST Conference Call		
306		Consider upgrading VEOC status to appropriate activation level. in accordance with VEST SOG.		
320		Consider request to Governor for Declaration of a State of Emergency in accordance with VEST SOG.		
324		Update FEMA Region III Watch Officer [REDACTED]		
328		Brief PAR to State Coordinating Officer		
335		Update FEMA Region III Watch Officer [REDACTED]		
Conducted by:		Position/Title:	Signed:	Date:
Approved by:		Position/Title:	Signed:	Date:

**VEST Team Lead – General Emergency**

Step	Time Completed	Action		
402		Consider Incident VEST Conference Call (on call Team &Team D)		
404		If required, conduct VEST Conference Call		
405		Consider upgrading VEOC status to appropriate activation level. in accordance with VEST SOG.		
419		Consider request to Governor for Declaration of a State of Emergency in accordance with VEST SOG.		
423		Update FEMA Region III Watch Officer [REDACTED]		
426		Brief PAR to State Coordinating Officer		
429		Present PAR to the State Coordinating Officer for briefing to the Governor to obtain Protective Action Decision (PAD)		
452		Update FEMA Region III Watch Officer [REDACTED]		
Conducted by:		Position/Title:	Signed:	Date:
Approved by:		Position/Title:	Signed:	Date:

Commonwealth of Virginia Radiological Emergency Response Plan  
Appendix 1 – Direction and Control

**Tab C to Appendix 1**

**State On-Scene Coordinator Checklist**

This checklist is prescribed for the State On-Scene Coordinator (SOSC) to facilitate receipt and transmission of appropriate information between the utility, the state, and local governments from the utility's Corporate Emergency Response Center (CERC), which is activated at the Alert, or more severe, ECL.

<b>Time Completed</b>	<b>Action</b>
	Respond to Dominion Corporate Emergency Response Center (CERC).  <i>Ensure you have credentials for access, computer, cell phone, and hot spot or Dominion corporate network access credentials.</i>
	Report to CERC and check in with Dominion Emergency Plan Advisor (EPA).  <i>Consult organization chart on right wall facing front of room.</i>
	Identify pertinent CERC officials:  VDH-ORH <i>Radiological Assessment Officer (RAO):</i> _____ <i>Dose Assessment Officer (DAO):</i> _____ <i>Field Team Coordinator (FTC):</i> _____ Dominion <i>Corporate Response Manager (CRM):</i> _____ <i>Emergency Plan Advisor (EPA):</i> _____
	Establish communications with VEOC - Protective Action Task Force  <i>Record direct phone number here:</i> _____ <i>Record Direct POC:</i> _____ <i>Record email:</i> _____
	Receive Local Field Team Availability Report forms from VEOC – SAU by email.

Commonwealth of Virginia Radiological Emergency Response Plan  
Appendix 1 – Direction and Control

	Receive initial briefing from Dominion Corporate Response Manager (CRM), including metrological data, current plant conditions, any trends that may indicate an increase in classification, and any unmet needs.
	Report initial briefing to VEOC Protective Action Task Force by email.
	<p>Activate regional HAZMAT team assets to staff state field monitoring teams when requested by VDH-ORH staff.</p> <p><i>Initial resources: NAPS – Newport News, SPS – Henrico Co</i></p> <p>Provide number of assets needed and location of VDH-ORH field team staging area to regional team contact.</p>
	Obtain current exposure control ratio from VDH-ORH staff
	Use PAR Impact Tool, and identify potential areas impacted based on current conditions and metrological data, number of potential population, and any special hazards, such as schools or hospitals.
	<p>Identify potential field monitoring points within potentially impacted areas based on current conditions and metrological data.</p> <p><b>Coordinate field monitoring points with VDH-ORH.</b></p>
	<p>Provide initial Conditions Report to Local Radiological Officers.</p> <p><b>Copy VEOC-SAU, VEOC-Protective Action Task Force, VDH-ORH, all EPZ ROs, and VDEM HMOs.</b></p> <p><b>Request VDEM-SAU transmit the form by email to local EMs.</b></p>
	Update VEOC – Protective Action Task Force on activities and current information.
	<p>Request information from VEOC – Protective Action Task Force regarding:</p> <ol style="list-style-type: none"> <li>1) establishment of the JIC;</li> <li>2) stored feed and covered water recommendations;</li> <li>3) closure of Lake Anna or restriction of vessel traffic on James River;</li> <li>4) current EOC status;</li> <li>5) FAA flight restrictions.</li> </ol>
	Brief CRM on current state activities.
	<p>Update VEOC – Protective Action Task Force upon changes in plant conditions or status.</p> <p>This step is repeated, since multiple updates may become necessary as conditions develop.</p>
	Attend CERC PAR development review upon notification of radiological release.



Commonwealth of Virginia Radiological Emergency Response Plan  
Appendix 1 – Direction and Control

	Obtain updated exposure control ratio from VDH-ORH.
	<p>Update VEOC – Protective Action Task Force upon changes in plant conditions or status.</p> <p><b>Advise task force of current plant conditions and any potential changing conditions that may impact their discussion.</b></p>
	<p>Request notification of PAD and time of ANS activation.</p> <p><i>Record time of ANS activation: _____</i></p>
	<p>Provide updated Conditions Report to Local Radiological Officers.</p> <p><b>Copy VEOC-SAU, VEOC-Protective Action Task Force, VDH-ORH, all EPZ ROs, and VDEM HMOs.</b></p> <p><b>Request VDEM-SAU transmit the form by email to local EMs.</b></p>
	Provide CRM updated status of state activities and time of ANS activation.
	<p>Update VEOC – Protective Action Task Force upon changes in plant conditions or status that may require any additional/amended PARs to be issued, for example:</p> <p><i>Expansion of affected area, or</i></p> <p><i>Implementation of KI administration</i></p>
	Attend CERC PAR development review upon any notification of a radiological release.
	Obtain updated exposure control ratio from VDH-ORH, if issued.
	<p>Update VEOC – Protective Action Task Force upon changes in plant conditions or status.</p> <p><b>Advise task force of current plant conditions and any potential changing conditions that may impact their discussion.</b></p>
	<p>Request notification of any subsequent PAD and time of ANS activation.</p> <p><i>Record time of ANS activation: _____</i></p>
	<p>Provide updated Conditions Report to Local Radiological Officers.</p> <p><b>Copy VEOC-SAU, VEOC-Protective Action Task Force, VDH-ORH, all EPZ ROs, and VDEM HMOs.</b></p> <p><b>Request VDEM-SAU transmit the form by email to local EMs.</b></p>
	Update CRM on status of state activities and any time of siren activation.

Commonwealth of Virginia Radiological Emergency Response Plan  
Appendix 1 – Direction and Control

<b>Position/Title:</b>	<b>Signed:</b>	<b>Date:</b>	
<b>Position/Title:</b>	<b>Signed:</b>	<b>Date:</b>	

Page Intentionally Left Blank.



## **Appendix 4**

### **Notification and Warning**

#### **I. Mission**

To provide for prompt notification by operators of fixed nuclear facilities to State and local government of a radiological emergency and for providing timely warning and instructions on protective actions to the public.

#### **II. OPERATIONAL CONCEPTS AND PROCEDURES**

##### **A. Concept of Operation**

1. Operators of fixed nuclear facilities will immediately notify local governments and the Virginia Emergency Operations Center (VEOC) whenever any of the four classes of radiological Emergency Classification Levels (ECLs) occur.
2. The primary means of notification by operators of fixed nuclear facilities will be by Dominion Energy Emergency Notification System (DEENS), which will permit simultaneous notification of the VEOC and the local governments within the plume exposure pathway Emergency Planning Zone (EPZ). DEENS generates an email to a predetermined set of recipients and summarizes the event and reason for an ECL declaration. An example is in Tab A. Radio, commercial telephones, and facsimile machines will be used as backup. Local governments within the ingestion pathway will be notified by the VEOC Situational Awareness Unit (SAU) via Virginia Criminal Information Network (VCIN), with backup by commercial telephone. See Tab D for ingestion pathway zone jurisdictions.
3. The initial notification from the facility of a(n) Notification of Unusual Event, Alert, Site Area Emergency, or General Emergency will be verified by local jurisdictions and the VEOC if the notification is not received by DEENS. Subsequent transmissions of information need not be verified unless the source is suspect. The facility operator will provide verification telephone numbers to the VEOC SAU and to local Public Safety Answering Points (PSAP or 911 center). According to Dominion Energy, an ECL notification will never be transmitted by another entity. However, the VEOC SAU may receive information from a local PSAP or 911 center if local law enforcement obtains information regarding a hostile event.
4. Subsequent notifications, e.g., escalation of ECL, termination of emergency, etc., will be received via DEENS. This information will be disseminated to State staff by the VEOC SAU, as outlined in the VEOC SAU Standard Operating Procedures (SOP). Local governments not included on the DEENS distribution list including those within the ingestion pathway, will be notified via VCIN, with backup by commercial telephone. In addition, the nuclear power station will send periodic



Commonwealth of Virginia Radiological Emergency Response Plan  
Appendix 4 – Notification and Warning

follow-up forms with pertinent updates. The content of that form can be seen in Tab C.

5. Protective Action Recommendations (PARs) from the nuclear power stations are communicated via commercial telephone to the VEOC SAU only on the “Facility Report of Protective Action Recommendation” (Tab B). The State discusses the PAR and may make changes and communicate the PAR to the local governments utilizing the “State Report of Protective Action Recommendations” via the Commonwealth Notification System (CNS).

B. Public Alerting

1. Primary responsibility for activating the Alert and Notification System (ANS) lies with the Virginia Department of Emergency Management (VDEM) in coordination with the affected local governments. State assistance in alerting and warning the public will be requested through the VEOC (See Appendices 9 and 10). The primary alerting method to alert residents and transient population within the plume exposure pathway EPZ is Wireless Emergency Alerts (WEA) through the Integrated Public Alert and Warning System (IPAWS). WEA broadcasts alerts and warnings from cellular towers to any WEA-enabled mobile device within a geographically targeted area, alerting and notifying individuals of an emergency. WEA messages are short emergency messages with a maximum of 90 characters or 360 characters for some cellular phones. These messages are prepared and transmitted by VDEM using IPAWS-compliant alerting origination software that generates the message in Common Alerting Protocol (CAP) format and then sends to the IPAWS Open Platform for Emergency Networks (IPAWS-OPEN), which routes the message to participating wireless carriers. The participating wireless carriers then push the alerts to mobile devices in the specified geographical target area. The messages are periodically transmitted to mobile devices for an extended duration, as determined by VDEM, to maximize the possibility of being received by members of the public. Messages can be received indoors or outdoors, heard, and felt through a special tone and vibration, both repeated twice. These messages direct individuals to turn on broadcast stations or communications media to receive additional information and instruction in the event of an emergency at North Anna Power Station (NAPS) or Surry Power Station (SPS). A WEA message for nuclear power incidents must be approved by the State Coordinator, Chief Deputy State Coordinator, Deputy State Coordinator for Disaster Services, or the Director of Disaster Response Programs.

IPAWS-WEA meets the requirements of NUREG 0654/FEMA-REP-1, Revision 2. This system also meets the design objectives as defined in Part V: REP Program Alert and Notification System Guidance of the 2019 RPM. A copy of the Memorandum of Agreement between VDEM and FEMA IPAWS Program Management Office is available from the VEOC SAU. WEA has the capability to provide an alert signal to the population throughout the plume exposure pathway EPZ within 15 minutes.

Everbridge is the primary method to transmit a WEA message and the Primary IPAWS-compliant CAP Alerting Origination Tool. Should the primary IPAWS-Compliant CAP Alert Origination Tool become unavailable, the first alternate method is the Emergency Management Network (EMnet) system, which is a satellite-based warning system and the Alternate IPAWS-CAP Alert Origination



Commonwealth of Virginia Radiological Emergency Response Plan  
Appendix 4 – Notification and Warning

Tool. The second alternate method is for VEOC SAU to contact the FEMA IPAWS Lab to transmit the WEA message on behalf of VDEM. The backup alert method is the VDEM Public Notification System, which is a public alert and notification system that uses a database of telephone numbers and associated addresses to deliver emergency messages to a specific geographic area via landline telephones or other communication methods such as mobile and VOIP telephone records. Other support systems include reverse 911, locality alert systems, social media, and weather radio transmission.

2. In addition to WEA message, transients located within 10 miles of a nuclear power station will be alerted of a radiological accident as follows:
  - a. Chippokes Plantation State Park and Lake Anna State Park by State Park Superintendents.
  - b. Jamestown and Yorktown Colonial National Historical Parks by National Park Rangers.
  - c. Colonial Williamsburg Foundation-by-Foundation employees at the various sites, vehicles with public address systems, and phone calls to individual rooms.
  - d. Busch Gardens and Water Country USA by public address system within the Parks.
  - e. Water sportsmen at Lake Anna, Hog Island, or on the James River (swimming, fishing, and boating) by Department of Wildlife Resources, Marine Resources Commission, and/or aircraft with public address systems.
  - f. Other transients will receive information and protective action instructions over the Emergency Alert System.
  - g. Detailed information on warning of the transient population is contained in local government plans and supporting SOPs.
  - h. Pamphlets entitled "Response to Emergency", featuring instructions to transients for responding to radiological emergencies at North Anna and Surry Power Stations are distributed annually within 10 miles of a nuclear power station in Virginia.
3. Notifications to special facilities (hospitals, nursing homes, prisons) with institutionalized personnel are the responsibility of local governments. Each special facility is required to maintain an emergency plan that provides for evacuation or sheltering in place, as appropriate. Requirements for evacuating special facilities will also be identified and assistance, if required, requested from the local government and VDEM. Non- institutionalized persons with special requirements, i.e., on life-support equipment or non-ambulatory, without transportation will be identified by name, address, and telephone number prior to a radiological emergency. Arrangements will be made to have these individuals evacuated early in the emergency, if this is the best available protective measure. Requirements above local capabilities will be identified during pre-emergency planning and assistance requested from VDEM.



Commonwealth of Virginia Radiological Emergency Response Plan  
Appendix 4 – Notification and Warning

4. Combinations of the following can be used as additional alerting methods to alert the public in the plume exposure pathway EPZ. Specific systems used will be described in each local government plan.
  - a. Emergency vehicles with loudspeakers.
  - b. Aircraft and boats with loudspeakers.
  - c. Telephone.
  - d. Radio.
  - e. Television.
  - f. Locality notification systems
  - g. Social media (Twitter, Facebook, Instagram, etc.)
  - h. Citizen's Band (CB) or other public radios.
  - i. Personal notification.
5. Based on the radiological emergency situation and off-site conditions, the initial warning might include instructions for in place sheltering or evacuation. Coordination will be effected with EAS radio and TV stations serving the affected area or other stations serving the affected political subdivisions so that emergency information and instructions can be disseminated.

C. Public Notification and Warning

EAS is the primary notification method for providing informational and/or instructional message(s) to the NAPS or SPS plume exposure pathway EPZ population. EAS is a national public warning system comprised of television and radio broadcasters; cable television systems; wireless cable systems; direct broadcast satellite service providers; and wireless video service providers that allow notification to the public during an emergency. EAS messages are prepared and transmitted by VDEM using IPAWS-compliant CAP Alert Origination Tool that generates the message in CAP format and then sends to IPAWS-OPEN, which routes the EAS message to designated EAS broadcast stations. The designated EAS broadcast stations then push the EAS message to all radio and television (AM FM digital, analog, cable, and satellite). See Tab E for pre-scripted EAS messages.

Everbridge is the primary method to transmit an EAS message and the primary IPAWS-compliant CAP Alert Origination Tool. Should the primary IPAWS-CAP Alert Origination Tool become unavailable, the first alternate method is the EMnet system, which is a satellite-based warning system and the alternate IPAWS-compliant CAP Alert Origination Tool. The second alternate method is for VEOC SAU to contact FEMA IPAWS Lab to transmit the EAS message on behalf of VDEM. The backup method is the VDEM Public Notification System, which is a public alert and notification system that uses a database of telephone numbers and associated addresses to deliver emergency messages to a specific geographical area via landline telephones and other communication methods, such as mobile and VOIP telephone records. Other support systems include reverse 911, locality notification systems, social media, weather radio transmission, telephone calls/recordings provided to local EAS stations, and physical alerting and notification.

IPAWS-EAS meets the requirements of NUREG 0654/FEMA-REP-1, Revision 2. This



Commonwealth of Virginia Radiological Emergency Response Plan  
Appendix 4 – Notification and Warning

system also meets the design objectives as defined in Part V: REP Program Alert and Notification System Guidance of the 2019 RPM. A copy of the Memorandum of Agreement between VDEM and FEMA IPAWS Program Management Office is available from the VEOC SAU. EAS has the capability to provide a short informational or instructional message to the population throughout the plume exposure pathway EPZ within 15 minutes. The initial notification system ensures coverage of essentially 100% of the population within plume exposure pathway EPZ.

The Virginia EAS process is detailed in the Commonwealth of Virginia EAS Plan. This plan includes identification of broadcast stations and 24-hour telephone numbers, including National Weather Service (NWS) stations. The VEOC SAU is connected directly to NAPS and SPS and is the sole activating authority of EAS for nuclear power station emergencies. VDEM is designated as the official clearing house for all State-level and Statewide EAS activations. VDEM will make the final determination for all Statewide and State-level EAS activation requests. VDEM has an EAS encoder and can originate Statewide activations directly from the VEOC SAU to the State primary station WRVA-AM. The VEOC SAU can send EAS activations from the State EOC to WRVA-AM either by dial-up telephone, direct connection, or by EMnet. EMnet can activate a station's EAS system with EAS messages. WRVA-AM has back-up power capabilities with a generator system.

Upon activation by the State primary programming control station WRVA-AM (in the Richmond area) and WGH (in the Newport News/Peninsula area), the activation request is handed off to the primary State relay station WRVQ-FM in Richmond, Virginia. The primary State relay station will begin the relay of all activation requests to other local areas. All local primary stations monitor the designated State relay or appropriate station in the Virginia State Relay Network. All local primary stations will also receive an EAS activation via EMnet.

Upon receipt of a request to activate the EAS at the State level, the control operator at WRVA-AM/WRVQ-FM may pass through the requested message from VDEM, or NWS as received. At the request of either agency, the control operator as received from the Associated Press, NOAA Weather Radio, facsimile, or VDEM can broadcast the script. Activation from the State primary station is disseminated to the local primary stations by a network of FM broadcast repeaters. Local primary stations will then rebroadcast EAS messages to their local area, cable facilities, participating stations, and non-participating broadcast stations.

Local activation of the EAS from authorized local government officials is accomplished through the VEOC. The local primary stations will broadcast the EAS alert and stations within the local area and will activate and rebroadcast the message. If the local governments are unable to contact the VEOC by telephone or radio, local governments are authorized to activate the local EAS and forward emergency action messages to the primary programming control stations. All information to be broadcast via EAS will be disseminated in accordance with the State EAS Plan. The State EAS Plan contains phone numbers for the broadcast stations listed in Sections 1 and 2 below. The Virginia EAS Homepage is another source for critical EAS information.

The VEOC is connected directly to all NWS offices with forecast and warning responsibilities



Commonwealth of Virginia Radiological Emergency Response Plan  
Appendix 4 – Notification and Warning

in Virginia by the National Warning System. The VEOC receives NWS products via a satellite feed from NWS. The NWS offices transmit warnings for weather and non-weather related events via the NOAA Weather Radio system. The warning transmissions are compatible with EAS. All participants are required to have equipment capable of monitoring the IPAWS feed.

Based on the Evacuation Time Estimates from November 2012 for SPS and NAPS, non-English speaking individuals fall below the 5% threshold for providing translated public information in a foreign language. Therefore, EAS and special news broadcasts are published in English only. As new data becomes available, a reassessment of providing additional translations of public information materials will be conducted.

For information on the list of EAS broadcast stations, frequencies, and network coverage maps serving the areas around NAPS and SPS, refer to the current Commonwealth of Virginia Emergency Alert System Plan.

1. Broadcast stations serving the area around the North Anna Power Station:

TV	WTVR WWBT WRIC WVIR	Channel 6 Channel 12 Channel 8 Channel 29	Richmond Richmond Petersburg Charlottesville
RADIO	WCVA WCUL WFAL WFVA  WYSK  WFLS  WRVA WJMA WRNL WRVA WRVQ WKLR WTVR WRXL WMXB WBTJ WJYJ WGRQ WBQB	1490 AM 103.1 FM 104.5 FM 1230 AM/ 101.5 FM 1350 AM/ 99.3 FM 1350 AM/ 93.3 FM 1140 AM 1340 AM 910 AM 1140 AM 94.5 FM 96.5 FM 98.1 FM 102.1 FM 103.7 FM 106.5 FM 90.5 FM 95.9 FM 101.5 FM	Culpeper Culpeper Falmouth Fredericksburg  Fredericksburg  Fredericksburg  Richmond Orange Richmond Richmond Richmond Richmond Richmond Richmond Richmond Richmond Spotsylvania Spotsylvania Fredericksburg

2. Broadcast stations serving the area around the Surry Power Station:



Commonwealth of Virginia Radiological Emergency Response Plan  
Appendix 4 – Notification and Warning

TV	WVEC	Channel 13	Norfolk
	WKTR	Channel 3	Norfolk
	WHRO	Channel 15	Norfolk
	WTVZ	Channel 33	Norfolk
	WAVY	Channel 10	Portsmouth
	WGNT	Channel 27	Portsmouth
	WTVR	Channel 6	Richmond
	WWBT	Channel 12	Richmond
	WRIC	Channel 8	Richmond

RADIO	WGH	1310 AM	Hampton
	WKGM	940 AM	Smithfield
	WSRV	92.3 FM	Williamsburg
	WWBR	107.9 FM	Williamsburg
	WRVA	1140 AM	Richmond
	WRNL	910 AM	Richmond
	WTVR	98.1 FM	Richmond
	WBTJ	106.5 FM	Richmond
	WTAR	850 AM	Norfolk
	WCMS	100.5 FM	Hampton
	WGH	97.3 FM	Hampton
	WXEZ	94.1 FM	Hampton
	WXGM	99.1 FM	Gloucester
	WXGM	1420 AM	Gloucester
	WCMS	1050 AM	Hampton
	WVKL	95.7 FM	Norfolk
	WNIS	790 AM	Norfolk
	WJCD	105.3 FM	Norfolk

D. Public Alert and Notification System (ANS) Activation

ANS can be used for a radiological emergency at a nuclear power station. The decision to activate the primary and/or backup ANS is made by VDEM. Activation of the ANS is performed by qualified and trained VEOC SAU personnel, per the VEOC SAU SOP. The primary method the VEOC SAU uses to transmit WEA and EAS messages is through VDEM's IPAWS-compliant CAP Alert Origination Tool. WEA and EAS are tested under applicable Federal and State requirements.

WEA and EAS messages are pre-scripted and pre-approved for prompt ANS activation. Approval to disseminate a(n) WEA and EAS message for an incident at a nuclear power plant is needed from the State Coordinator, Chief Deputy State Coordinator, Deputy State Coordinator for Disaster Services, or the Director of Disaster Response Programs. WEA messages will be transmitted to mobile devices in the designated area selected and local broadcasters should interrupt their regular scheduled programming to broadcast the EAS message.

Commonwealth of Virginia Radiological Emergency Response Plan  
Appendix 4 – Notification and Warning

Once the VEOC SAU receives a protective action recommendation (PAR) from the nuclear facility, VDEM, in coordination with the Virginia Department of Health-Office of Radiation Health, will review, evaluate, and develop required actions. Based on the information received and other considerations, a protective action decision (PAD) is made for the plume exposure pathway EPZ residential and transient populations. To communicate with the public, VEOC SAU personnel will implement established procedures in the VEOC SAU SOP, which includes a step-by-step process for activating the primary, and if necessary, the backup ANS sub-systems. The message will be rebroadcast every 15 minutes if requested.

The process includes the following:

- Approval to disseminate a(n) WEA and EAS messages for nuclear power plant incidents is obtained from either the State Coordinator, Chief Deputy State Coordinator, Deputy State Coordinator for Disaster Services, or the Director of Disaster Response Programs. The VDEM Communication Division will verify the EAS message is accurate and correctly communicates the PAD before transmitting to EAS broadcasters.
- Using the pre-approved, pre-scripted WEA, EAS, and VDEM Public Notification System messages, the primary and backup ANS sub-systems are activated simultaneously. The IPAWS-compliant CAP Alert Origination Tool provides a verification signal when the messages are successfully transmitted to the public.
- VEOC SAU monitors radio and local television stations to verify EAS activation is successful.

ATTACHMENTS

Tab A	Sample DEENS Emails and Back-up Communications Forms	
Tab B	Facility Report of Protective Action Recommendation	
Tab C	Example of Follow-Up Notification Form from Nuclear Power Stations	
Tab D	Adjacent States and Jurisdictions within 50-Mile Ingestion Pathway	
	Attachment 1	Map of Ingestion Pathway Jurisdictions
	Attachment 2	Surry Power Station Ingestion Pathway – Adjacent Jurisdictions (In-State and Out-of-State)
	Attachment 3	North Anna Power Station Ingestion Pathway – Adjacent Jurisdictions (In-State and Out-of-State)
	Attachment 4	Calvert Cliffs Power Station (Maryland) – Virginia Jurisdictions within Ingestion Pathway
Tab E	Pre-scripted EAS Messages Template Examples	

DRAFT



Commonwealth of Virginia Radiological Emergency Response Plan  
Appendix 4 – Notification and Warning

**Tab A to Appendix 4**

**Sample DEENS Emails and Back-up Communications Forms**

FA1.1 – Classification Message

DEENS <noreply@everbridge.net>

[Please click here to acknowledge receipt of this message](#)

SURRY POWER STATION EMERGENCY NOTIFICATION FORM	
Message #: 1	Message Type: Classification
<p>1. EVENT: Drill</p> <p>2. AFFECTED SITE: Surry</p> <p>3. EMERGENCY CLASSIFICATION: ALERT</p> <p>4. EAL #: FA1.1 Declaration Date/Time: 10-13-2020 08:10</p> <p>EAL DESCRIPTION: There are indications of a loss or potential loss of either the Fuel Cladding or Reactor Coolant System integrity.</p> <p>5. RELEASE TO THE ENVIRONMENT (caused by the emergency): Is occurring</p> <p>6. METEOROLOGICAL DATA (based on On-Site Measurements on 10-13-2020 08:17)</p> <p>Wind direction from: 316 degrees</p> <p>Wind Speed: 5 mph</p>	
7. APPROVED BY: Operations SEM	
8. NOTIFIED BY: Leslie Mathews	
Date/Time: 10-13-2020 08:19:13	



Commonwealth of Virginia Radiological Emergency Response Plan  
Appendix 4 – Notification and Warning



<b>SURRY BACKUP EMERGENCY NOTIFICATION FORM</b>	
Attention All Stations. This is Surry Power Station. Use the Backup Emergency Notification Form to copy message (read slowly)	
Message #: _____	Message Type: <input type="checkbox"/> Classification <input type="checkbox"/> Update <input type="checkbox"/> Termination
<b>Complete only ITEMS 1 - 6 for classification message</b>	
1. EVENT: <input type="checkbox"/> Drill <input type="checkbox"/> Emergency	
2. AFFECTED SITE: Surry	
3. EMERGENCY CLASSIFICATION: <input type="checkbox"/> NOUE <input type="checkbox"/> ALERT <input type="checkbox"/> SITE AREA EMERGENCY <input type="checkbox"/> GENERAL EMERGENCY	
4. EAL #: _____ Declaration Date/Time: ____/____/____ at ____:____ (24-hr time)	
5. RELEASE TO THE ENVIRONMENT (caused by the emergency): <input type="checkbox"/> No <input type="checkbox"/> Is Occurring <input type="checkbox"/> Has Occurred	
6. METEOROLOGICAL DATA (based on) <input type="checkbox"/> on-site <input type="checkbox"/> off-site <input type="checkbox"/> not available measurements on ____/____/____ at ____:____ (24-hr time) <small>(date mm/dd/yyyy)</small>	
Wind direction from: _____ degrees (0 – 360)      Wind Speed: _____ mph	
<b>Complete ITEMS 7 – 12 in addition to Item 1 – 6 for update message</b>	
7. Off-site Services Requested: <input type="checkbox"/> Fire <input type="checkbox"/> Ambulance <input type="checkbox"/> Law Enforcement/Security <input type="checkbox"/> None	
8. Prognosis: <input type="checkbox"/> Stable <input type="checkbox"/> Improving <input type="checkbox"/> Worsening	
9. Evacuation to Primary Remote Assembly Area (RAA): <input type="checkbox"/> Planned <input type="checkbox"/> In Progress <input type="checkbox"/> Completed <input type="checkbox"/> Released From RAA <input type="checkbox"/> No	
10. Evacuation to Secondary Remote Assembly Area (RAA): <input type="checkbox"/> Planned <input type="checkbox"/> In Progress <input type="checkbox"/> Completed <input type="checkbox"/> Released From RAA <input type="checkbox"/> No	
11. Company Dismissal: <input type="checkbox"/> Planned <input type="checkbox"/> In Progress <input type="checkbox"/> Completed <input type="checkbox"/> No	
12. Remarks: _____ _____ _____	
<b>Complete ITEMS 13 – 15 ONLY for termination message</b>	
13. EVENT: <input type="checkbox"/> Drill <input type="checkbox"/> Emergency	
14. Affected Site: Surry	
15. Termination Date/Time: ____/____/____ at ____:____ (24-hr time)	
Please acknowledge receipt of this message: (conduct roll-call and check boxes as each party answers.)	
<div style="display: flex; justify-content: space-between;"><div><input type="checkbox"/> VA EOC</div><div><input type="checkbox"/> Surry County</div><div><input type="checkbox"/> Isle of Wight County</div><div><input type="checkbox"/> James City County</div><div><input type="checkbox"/> Newport News</div></div> <div style="display: flex; justify-content: space-between; margin-top: 5px;"><div><input type="checkbox"/> York County</div><div><input type="checkbox"/> Williamsburg</div></div>	
APPROVED BY: _____	
NOTIFIED BY: _____	
Date/Time: ____/____/____ at ____:____ (24-hr time)	

Form No. 7308018 (September 2020)  
© Dominion Energy

Commonwealth of Virginia Radiological Emergency Response Plan  
Appendix 4 – Notification and Warning

**Tab B to Appendix 4**

**Facility Report of Protective Action Recommendation**

PAR MESSAGE # \_\_\_\_\_

**REPORT OF PROTECTIVE ACTION RECOMMENDATION –  
FOR USE BY STATE ONLY**

This is (North Anna / Surry Power Station) with a(n) ☐ Drill Message ☐ Emergency Message for Protective Action Recommendation. **Use the Report of Protective Action Recommendation Form to copy this message.**

**PROTECTIVE ACTION RECOMMENDATION:**

- ☐ Shelter-in-place: \_\_\_\_\_ Mile radius 360° and \_\_\_\_\_ Miles downwind in the following  
Sectors: \_\_\_\_\_
- ☐ Evacuate: \_\_\_\_\_ Mile radius 360° and \_\_\_\_\_ Miles downwind in the following  
Sectors: \_\_\_\_\_
- ☐ Beyond 10 Mile EPZ:
- ☐ Evacuate Area: \_\_\_\_\_ Centerline in degrees; \_\_\_\_\_ Distance in Miles; \_\_\_\_\_ Width in feet
- ☐ Shelter-in-place: \_\_\_\_\_ Centerline in degrees; \_\_\_\_\_ Distance in Miles; \_\_\_\_\_ Width in feet
- ☐ Potassium Iodide: Recommend implementation of Potassium Iodide (KI) strategies for the general public. The projected dose at the site boundary is  $\geq 5$  Rem Child Thyroid CDE.

The time is: \_\_\_\_\_  
(24-hr time)

This is (name) \_\_\_\_\_ /Emergency Communicator

Message received by: Virginia EOC Watch Officer (name) \_\_\_\_\_

This is (North Anna / Surry Power Station) out at \_\_\_\_\_ on \_\_\_\_\_  
(24-hr time) (date)

*April 2019*



Commonwealth of Virginia Radiological Emergency Response Plan  
Appendix 4 – Notification and Warning

**Tab C to Appendix 4**

**Example of Follow-Up Notification Form from Nuclear Power Stations**

FA1.1 - Update Message

DEENS <noreply@everbridge.net>  
[REDACTED]

[Please click here to acknowledge receipt of this message](#)

SURRY POWER STATION EMERGENCY NOTIFICATION FORM	
Message #: 2	Message Type: Update
<p>1. EVENT: Drill</p> <p>2. AFFECTED SITE: Surry</p> <p>3. EMERGENCY CLASSIFICATION: ALERT</p> <p>4. EAL #: FA1.1 Declaration Date/Time: 10-13-2020 08:10</p> <p>EAL DESCRIPTION: There are indications of a loss or potential loss of either the Fuel Cladding or Reactor Coolant System integrity.</p> <p>5. RELEASE TO THE ENVIRONMENT (caused by the emergency): None</p> <p>6. METEOROLOGICAL DATA (based on On-Site Measurements on 10-13-2020 09:08)</p> <p>Wind direction from: 310 degrees</p> <p>Wind Speed: 5 mph</p>	
<p>7. Offsite Services Requested: Law Enforcement/Security</p> <p>8. Prognosis: Stable</p> <p>9. Evacuation to Primary Remote Assembly Area (RAA): No</p> <p>10. Evacuation to Secondary Remote Assembly Area (RAA): No</p> <p>11. Company Dismissal: No</p> <p>12. Remarks: local law enforcement has access control of route 650. No radiological release in progress (initial report was inaccurate)</p>	
13. APPROVED BY: Dana Knee	
14. NOTIFIED BY: Christian Litterst Date/Time: 10-13-2020 09:14:59	

Commonwealth of Virginia Radiological Emergency Response Plan  
Appendix 4 – Notification and Warning

FG1.1 – Termination Message

DEENS <noreply@everbridge.net>  
[REDACTED]

[Please click here to acknowledge receipt of this message](#)

SURRY POWER STATION EMERGENCY NOTIFICATION FORM	
Message #: 5	Message Type: Termination
1. EVENT: Drill 2. AFFECTED SITE: Surry 3. TERMINATION: Event terminated at 10-13-2020 10:48	
4. APPROVED BY: Dana Knee	
5. NOTIFIED BY: Christian Litterst Date/Time: 10-13-2020 10:52:36	

Commonwealth of Virginia Radiological Emergency Response Plan  
Appendix 4 – Notification and Warning

**Tab D to Appendix 4**

**Adjacent States and Jurisdictions Within  
50-Mile Ingestion Pathway**

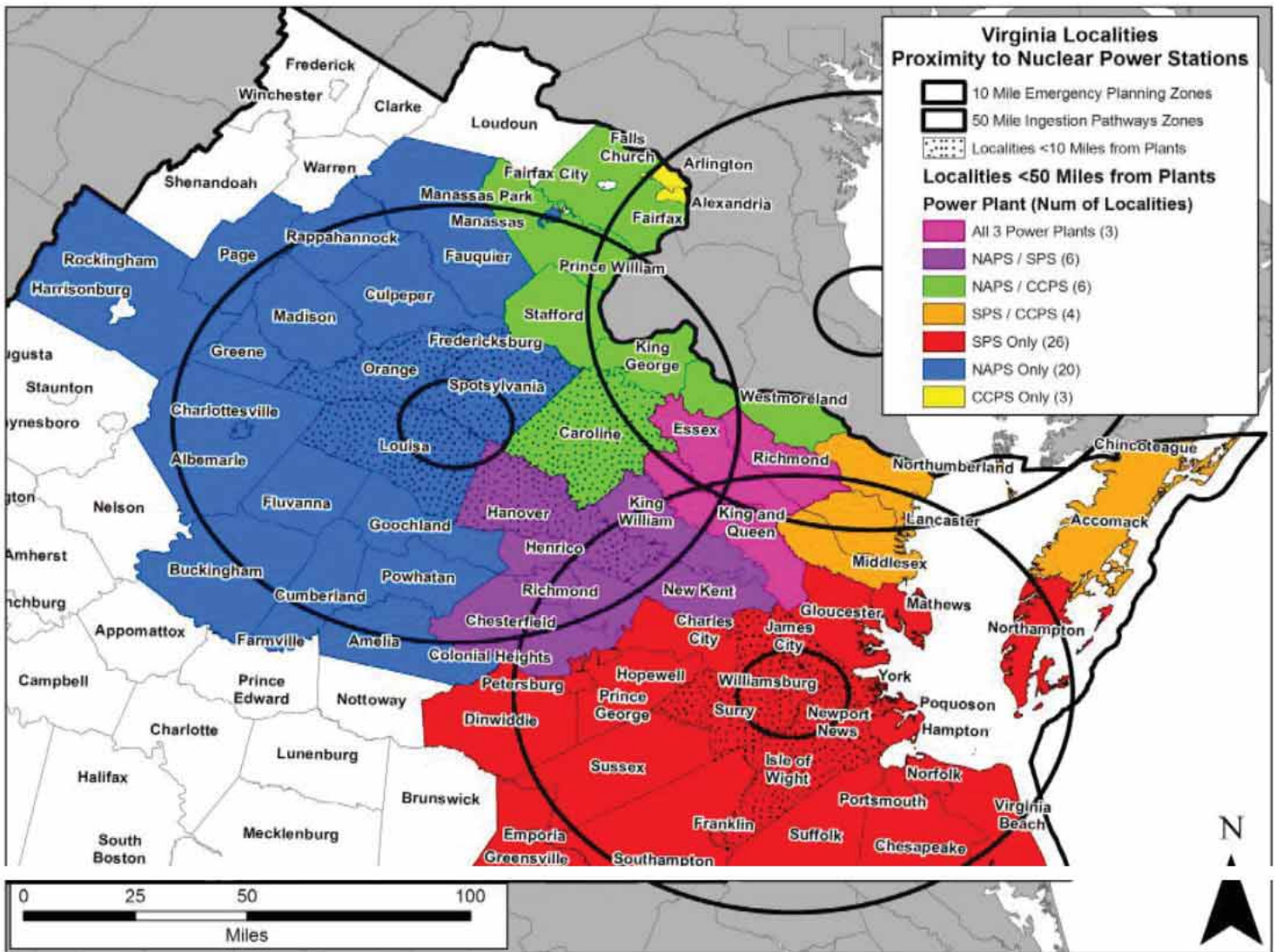
1. The Virginia EOC will provide notification to affected or potentially affected jurisdictions within the ingestion pathway and adjacent states in the event of a radiological emergency occurring at the North Anna Power Station or Surry Power Station. Similar alerting procedures will be used to notify any area(s) of the State, depending on the type of radiological accident and effect. The State will transmit to each local organization recommended protective measures based upon protective action guides and other criteria. This shall be consistent with the recommendations of the U.S. Environmental Protection Agency (EPA) regarding exposure resulting from passage of radiological airborne plumes and with other Federal recommendations regarding radioactive contamination of human foods and animal feeds.
2. The primary means for notifying adjacent states and local jurisdictions within the ingestion pathway will be by commercial telephone. Adjacent states and local governments within the ingestion pathway are listed in Attachments 1 (Surry) and 2 (North Anna).
3. The Virginia EOC will provide notification to affected or potentially affected local jurisdictions within the Virginia portion of the ingestion pathway in the event of a radiological emergency occurring at the Calvert Cliffs, Maryland, Nuclear Power Station.



Commonwealth of Virginia Radiological Emergency Response Plan  
Appendix 4 – Notification and Warning

Tab D Attachment 1 to Appendix 4

Map of Ingestion Jurisdictions



Commonwealth of Virginia Radiological Emergency Response Plan  
Appendix 4 – Notification and Warning

**Tab D Attachment 2 to Appendix 4**

**Surry Power Station Ingestion Pathway Adjacent Jurisdictions  
(In-State and Out-of-State)**

Virginia

Counties

Cities

- |                     |                     |
|---------------------|---------------------|
| 1. Charles City     | 1. Chesapeake       |
| 2. Chesterfield+    | 2. Colonial Heights |
| 3. Dinwiddie        | 3. Franklin         |
| 4. Essex+@          | 4. Hampton          |
| 5. Gloucester       | 5. Hopewell         |
| 6. Greensville      | 6. Newport News*    |
| 7. Hanover+         | 7. Norfolk          |
| 8. Henrico+         | 8. Petersburg       |
| 9. Isle of Wight*   | 9. Poquoson         |
| 10. James City*     | 10. Portsmouth      |
| 11. King & Queen+@  | 11. Richmond+       |
| 12. King William+   | 12. Suffolk         |
| 13. Lancaster@      | 13. Virginia Beach  |
| 14. Mathews         | 14. Williamsburg*   |
| 15. Middlesex@      |                     |
| 16. New Kent+       |                     |
| 17. Northampton     | Towns               |
| 18. Northumberland@ |                     |
| 19. Prince George   | 1. West Point       |
| 20. Richmond+@      |                     |
| 21. Southampton     |                     |
| 22. Surry*          |                     |
| 23. Sussex          |                     |
| 24. York*           |                     |

North Carolina

1. Camden
2. Currituck
3. Hertford
4. Northampton
5. Pasquotank
6. Gates

\* Within 10 miles of SPS.

+ Also, within 50 miles of NAPS. @

Within 50 miles of Calvert Cliffs

Commonwealth of Virginia Radiological Emergency Response Plan  
Appendix 4 – Notification and Warning

**Tab D Attachment 3 to Appendix 4**

**North Anna Power Station Ingestion Pathway Adjacent Jurisdictions  
(In-State and Out-of-State)**

Virginia	Counties	Cities
	1. Albemarle	1. Charlottesville
	2. Amelia	2. Fredericksburg
	3. Buckingham	3. Manassas
	4. Caroline *@	4. Richmond+
	5. Chesterfield +	
	6. Culpeper	
	7. Cumberland	
	8. Essex +@	
	9. Fairfax@	
	10. Fauquier	
	11. Fluvanna	
	12. Goochland	
	13. Greene	
	14. Hanover * +	
	15. Henrico +	
	16. King George@	
	17. King & Queen +@	
	18. King William +	
	19. Louisa *	
	20. Madison	
	21. New Kent+	
	22. Orange *	
	23. Page	
	24. Powhatan	
	25. Prince William@	
	26. Rappahannock	
	27. Richmond+@	
	28. Rockingham	
	29. Spotsylvania *	
	30. Stafford@	
	31. Westmoreland@	
Maryland	1. Charles County	

\*Within 10 miles of NAPS.

+ Also, within 50 miles of SPS.

@Within 50 miles of Calvert Cliffs



Commonwealth of Virginia Radiological Emergency Response Plan  
Appendix 4 – Notification and Warning

**Tab D Attachment 4 to Appendix 4**

**Calvert Cliffs Power Station (Maryland)  
Virginia Jurisdictions within Ingestion Pathway**

Counties	Cities
1. Accomack (Tangier Island)	1. Alexandria
2. Arlington	2. Falls Church
3. Caroline*	
4. Essex +*	
5. Fairfax*	
6. King George*	
7. King and Queen +*	
8. Lancaster +	
9. Middlesex +	
10. Northumberland +	
11. Prince William*	
12. Richmond +*	
13. Stafford *	
14. Westmoreland*	

\* Also, within 50 miles of NAPS.

+ Also, within 50 miles of SPS.

Commonwealth of Virginia Radiological Emergency Response Plan  
Appendix 4 – Notification and Warning

Tab E to Appendix 4  
Prescribed EAS Messages  
Template Examples

Actual Pre-Scripted EAS Messages are electronically recorded into the EAS computer system and copies are maintained by the SAU.



Virginia Department of  
Emergency Management  
**EAS MESSAGE**

9711 Farrar Court, Suite 200  
North Chesterfield, VA 23236  
804.267.7610  
[www.vaemergency.gov](http://www.vaemergency.gov)

**DRAFT EAS TEMPLATE: NAPS PUBLIC NOTIFICATION**  
**(No Action Necessary)**  
**EAS MESSAGE**

**Date:** \_\_\_\_\_

**Time:** \_\_\_\_\_

*Public Notice: No Action Necessary*

This is the Emergency Alert System. The Governor of Virginia has activated the Emergency Alert System because of an emergency at the North Anna Nuclear Power Station.

Due to the potential for conditions at the power station to worsen, the Governor has decided to alert the public in the area of the North Anna Nuclear Power Station to stay tuned to this Emergency Alert Station. No precautionary actions are necessary at this time. If conditions warrant, additional information and instructions will be broadcast on this station.

Information concerning the North Anna Nuclear Power Station and emergency preparedness can be found in Dominion's emergency planning calendar and online at [www.dominionenergy.com](http://www.dominionenergy.com).

Please stay tuned to this Emergency Alert Station for further information and instructions.

Tab E to Appendix 4



Virginia Department of  
Emergency Management  
**EAS MESSAGE**

9711 Farrar Court, Suite 200  
North Chesterfield, VA 23236  
804.267.7610  
[www.vaemergency.gov](http://www.vaemergency.gov)

## DRAFT EAS TEMPLATE: NAPS EVACUATION EAS MESSAGE

**Date:** \_\_\_\_\_

**Time:** \_\_\_\_\_

**Evacuation Only**

This is the Emergency Alert System. The Governor of Virginia has activated the Emergency Alert System because of an emergency at the North Anna Nuclear Power Station.

The Governor has ordered evacuation for the protective action zones in the following jurisdictions: \_\_\_\_\_ in protective action zones: \_\_\_\_\_ . People in these protective action zones are ordered to immediately leave the area and may report to their assigned evacuation assembly centers.

Information to help citizens determine the protective action zone in which they are located, evacuation routes, evacuation assembly centers, and protective actions can be found in Dominion's emergency planning calendar and online at [www.dominionenergy.com](http://www.dominionenergy.com).

Please stay tuned to this Emergency Alert Station for further information and instructions.



Commonwealth of Virginia Radiological Emergency Response Plan  
Appendix 4 – Notification and Warning

Tab E to Appendix 4



Virginia Department of  
Emergency Management  
**EAS MESSAGE**

9711 Farrar Court, Suite 200  
North Chesterfield, VA 23236  
804.267.7610  
[www.vaemergency.gov](http://www.vaemergency.gov)

## DRAFT EAS TEMPLATE: NAPS SHELTER

### EAS MESSAGE

**Date:** \_\_\_\_\_

**Time:** \_\_\_\_\_

*Shelter in place only*

This is the Emergency Alert System. The Governor of Virginia has activated the Emergency Alert System because of an emergency at the North Anna Nuclear Power Station.

The Governor has ordered in place sheltering for the protective action zones in the following jurisdictions: \_\_\_\_\_ in protective action zones: \_\_\_\_\_ . People in these protective action zones are ordered to take shelter immediately.

Information to help citizens determine the protective action zone in which they are located, evacuation routes, evacuation assembly centers and instructions on protective actions can be found in Dominion's emergency planning calendar and online at [www.dominionenergy.com](http://www.dominionenergy.com).

Please stay tuned to this Emergency Alert Station for further information and instructions.

Tab E to Appendix 4



Virginia Department of  
Emergency Management  
**EAS MESSAGE**

9711 Farrar Court, Suite 200  
North Chesterfield, VA 23236  
804.267.7610  
[www.vaemergency.gov](http://www.vaemergency.gov)

# **DRAFT EAS TEMPLATE: NAPS EVACUATION + SHELTER EAS MESSAGE**

**Date:** \_\_\_\_\_

**Time:** \_\_\_\_\_

## ***Shelter and Evacuation Message***

This is the Emergency Alert System. The Governor of Virginia has activated the Emergency Alert System because of an emergency at the North Anna Nuclear Power Station.

The Governor has ordered evacuation for Protective Action Zones in the following jurisdictions:  
\_\_\_\_\_ in protective action zones:

\_\_\_\_\_. People in these protective action zones are ordered to immediately leave the area and may report to their assigned evacuation assembly centers.

The Governor is also advising those people in any remaining Protective Action Zones for the listed jurisdictions to take shelter immediately.

Information to help citizens determine the protective action zone in which they are located, evacuation routes, evacuation assembly centers and instructions on protective actions can be found in Dominion's emergency planning calendar and online at [www.dominionenergy.com](http://www.dominionenergy.com).

Please stay tuned to this Emergency Alert Station for further information and instructions.



Tab E to Appendix 4



Virginia Department of  
Emergency Management  
**EAS MESSAGE**

9711 Farrar Court, Suite 200  
North Chesterfield, VA 23236  
804.267.7610  
[www.vaemergency.gov](http://www.vaemergency.gov)

## DRAFT EAS TEMPLATE: NAPS KI NOTIFICATION EAS MESSAGE

**Date:** \_\_\_\_\_

**Time:** \_\_\_\_\_

**Potassium Iodide (KI)**

This is the Emergency Alert System. The Governor of Virginia has activated the Emergency Alert System because of an emergency at the North Anna Nuclear Power Station.

Due to a release of radioactivity into the atmosphere, the State Commissioner of Health has advised people in the following jurisdictions to ingest Potassium Iodide: \_\_\_\_\_

\_\_\_\_\_ in protective action zones: \_\_\_\_\_  
\_\_\_\_\_.

Follow instructions from health officials on how much Potassium Iodide to ingest. Individuals allergic to iodine should not ingest Potassium Iodide, and those with certain thyroid diseases should talk to health officials before ingesting.

Residents within 10 miles of the North Anna Nuclear Power Station can receive doses of Potassium Iodide at their evacuation assembly center. More information can be found in Dominion's emergency planning calendar and online at [www.dominionenergy.com](http://www.dominionenergy.com).

Please stay tuned to this Emergency Alert Station for further information and instructions.



Commonwealth of Virginia Radiological Emergency Response Plan  
Appendix 4 – Notification and Warning

Tab E to Appendix 4



Virginia Department of  
Emergency Management  
**EAS MESSAGE**

9711 Farrar Court, Suite 200  
North Chesterfield, VA 23236  
804.267.7610  
[www.vaemergency.gov](http://www.vaemergency.gov)

**DRAFT EAS TEMPLATE: SPS PUBLIC NOTIFICATION**  
**(No Action Necessary)**  
**EAS MESSAGE**

**Date:** \_\_\_\_\_

**Time:** \_\_\_\_\_

*Public Notice: No Action Necessary*

This is the Emergency Alert System. The Governor of Virginia has activated the Emergency Alert System because of an emergency at the Surry Nuclear Power Station.

Due to the potential for conditions at the power station to worsen, the Governor has decided to alert the public in the area of the Surry Nuclear Power Station to stay tuned to this Emergency Alert Station. No precautionary actions are necessary at this time. If conditions warrant, additional information and instructions will be broadcast on this station.

Information concerning the Surry Nuclear Power Station and emergency preparedness can be found in Dominion's emergency planning calendar and online at [www.dominionenergy.com](http://www.dominionenergy.com).

Please stay tuned to this Emergency Alert Station for further information and instructions.

Commonwealth of Virginia Radiological Emergency Response Plan  
Appendix 4 – Notification and Warning

Tab E to Appendix 4



Virginia Department of  
Emergency Management  
**EAS MESSAGE**

9711 Farrar Court, Suite 200  
North Chesterfield, VA 23236  
804.267.7610  
[www.vaemergency.gov](http://www.vaemergency.gov)

## DRAFT EAS TEMPLATE: SPS EVACUATION EAS MESSAGE

Date: \_\_\_\_\_

Time: \_\_\_\_\_

*Evacuation Only*

This is the Emergency Alert System. The Governor of Virginia has activated the Emergency Alert System because of an emergency at the Surry Nuclear Power Station.

The Governor has ordered evacuation for the protective action zones in the following jurisdictions: \_\_\_\_\_ in protective action zones: \_\_\_\_\_ . People in these protective action zones are ordered to immediately leave the area and may report to their assigned evacuation assembly centers.

Information to help citizens determine the protective action zone in which they are located, evacuation routes, evacuation assembly centers, and protective actions can be found in Dominion's emergency planning calendar and online at [www.dominionenergy.com](http://www.dominionenergy.com).

Please stay tuned to this Emergency Alert Station for further information and instructions.

Commonwealth of Virginia Radiological Emergency Response Plan  
Appendix 4 – Notification and Warning

Tab E to Appendix 4



Virginia Department of  
Emergency Management  
**EAS MESSAGE**

9711 Farrar Court, Suite 200  
North Chesterfield, VA 23236  
804.267.7610  
[www.vaemergency.gov](http://www.vaemergency.gov)

**DRAFT EAS TEMPLATE: SPS SHELTER**  
**EAS MESSAGE**

**Date:** \_\_\_\_\_

**Time:** \_\_\_\_\_

*Shelter in place only*

This is the Emergency Alert System. The Governor of Virginia has activated the Emergency Alert System because of an emergency at the Surry Nuclear Power Station.

The Governor has ordered in place sheltering for the protective action zones in the following jurisdictions: \_\_\_\_\_ in protective action zones: \_\_\_\_\_ . People in these protective action zones are ordered to take shelter immediately.

Information to help citizens determine the protective action zone in which they are located, evacuation routes, evacuation assembly centers and instructions on protective actions can be found in Dominion's emergency planning calendar and online at [www.dominionenergy.com](http://www.dominionenergy.com).

Please stay tuned to this Emergency Alert Station for further information and instructions.



Tab E to Appendix 4



Virginia Department of  
Emergency Management  
**EAS MESSAGE**

9711 Farrar Court, Suite 200  
North Chesterfield, VA 23236  
804.267.7610  
[www.vaemergency.gov](http://www.vaemergency.gov)

# **DRAFT EAS TEMPLATE: SPS EVACUATION + SHELTER EAS MESSAGE**

**Date:** \_\_\_\_\_

**Time:** \_\_\_\_\_

## ***Shelter and Evacuation Message***

This is the Emergency Alert System. The Governor of Virginia has activated the Emergency Alert System because of an emergency at the Surry Nuclear Power Station.

The Governor has ordered evacuation for Protective Action Zones in the following jurisdictions:  
\_\_\_\_\_ in protective action zones:

\_\_\_\_\_. People in these protective action zones are ordered to immediately leave the area and may report to their assigned evacuation assembly centers.

The Governor is also advising those people in any remaining Protective Action Zones for the listed jurisdictions to take shelter immediately.

Information to help citizens determine the protective action zone in which they are located, evacuation routes, evacuation assembly centers and instructions on protective actions can be found in Dominion's emergency planning calendar and online at [www.dominionenergy.com](http://www.dominionenergy.com).

Please stay tuned to this Emergency Alert Station for further information and instructions.

Commonwealth of Virginia Radiological Emergency Response Plan  
Appendix 4 – Notification and Warning

Tab E to Appendix 4



Virginia Department of  
Emergency Management  
**EAS MESSAGE**

9711 Farrar Court, Suite 200  
North Chesterfield, VA 23236  
804.267.7610  
www.vaemergency.gov

## DRAFT EAS TEMPLATE: SPS KI NOTIFICATION EAS MESSAGE

**Date:** \_\_\_\_\_

**Time:** \_\_\_\_\_

**Potassium Iodide (KI)**

This is the Emergency Alert System. The Governor of Virginia has activated the Emergency Alert System because of an emergency at the Surry Nuclear Power Station.

Due to a release of radioactivity into the atmosphere, the State Commissioner of Health has advised people in the following jurisdictions to ingest Potassium Iodide: \_\_\_\_\_

\_\_\_\_\_ in protective action zones: \_\_\_\_\_  
\_\_\_\_\_.

Follow instructions from health officials on how much Potassium Iodide to ingest. Individuals allergic to iodine should not ingest Potassium Iodide, and those with certain thyroid diseases should talk to health officials before ingesting.

Residents within 10 miles of the Surry Nuclear Power Station can receive doses of Potassium Iodide at their evacuation assembly center. More information can be found in Dominion's emergency planning calendar and online at [www.dominionenergy.com](http://www.dominionenergy.com).

Please stay tuned to this Emergency Alert Station for further information and instructions.



Commonwealth of Virginia Radiological Emergency Response Plan  
Appendix 4 – Notification and Warning

\*The following is a list of Protective Action Zones that may be included in all or part of the EAS Messages outlined above. The selection of these zones will be dependent on the Protective Action Decision (PAD). Many factors are considered in determining the PAD including, meteorology, radioactive release, dose projections, amongst others.

### **North Anna Power Station**

#### Louisa County:

Zone 2 - Town of Mineral.

Zone 3 - Consists of the area bounded on the: north by Route 22/208, south by Routes 605 and 643, east by Route 522 and the Mineral Town line, south by Routes 605 and 643, west by Routes 644, 33, and the Louisa Town Line.

Zone 4 - Consists of the area bounded on the: north by Route 208, south by Routes 618 and 687, east by Lake Anna, Contrary Creek, Routes 652 and 700, south by Routes 618 and 667, west by Route 208/522.

Zone 5 - Consists of the area bounded on the: north by Route 618, east by Route 609, and south by Routes 33 and 657, west by Route 522.

Zone 6 - Consists of the area bounded on the: north by Route 652, east by Route 614, south by Route 618, west by Route 700.

Zone 7 - Consists of the area bounded on the: north by Route 652, east by Route 650, south by Route 618, west by Route 614.

Zone 8 - Consists of the area bounded on the: north by Lake Anna, southeast by Route 614, northwest by Contrary Creek, southwest by Route 652.

Zone 10 - Consists of the area bounded on the: north by Route 614 and Lake Anna, east by Lake Anna, south by Route 622, west by Route 652.

Zone 15 - Consists of the area bounded on the: north by Lake Anna, east by Lake Anna, south by Route 208, west by Routes 522 and 719.

Zone 16 - Consists of the area bounded on the: north by Lake Anna, east by Routes 719 and 522/208, south by Routes 22 and 208 and Louisa Town Line, west by Colonial Pipeline.

Zone 25 - Consists of the area bounded on the: north by North Anna River, east by Route 601 south by Route 652, west by Route 622.

Zone 26 - Consists of the area bounded on the: north by North Anna River, east by Louisa/Hanover County line, south by Routes 33, 655, 701 and 608, west by Routes 609, 650, 652, and 601.

The recommended evacuation routes for Louisa County are Routes 33, 208, 522, 601, 609, 614, 618, 655, 700, 715 and 719. The Evacuation Assembly Center for Louisa County is the Moss-Nuckols Elementary School.



Commonwealth of Virginia Radiological Emergency Response Plan  
Appendix 4 – Notification and Warning

Spotsylvania County:

Zone 9 - Consists of the area bounded on the: north by Routes 713 and 601, east by Route 614, south by Lake Anna, west by Route 208.

Zone 11 - Consists of the area bounded on the: north by Route 657, east by Route 738 south by Route 622, west by Lake Anna and Route 614.

Zone 12 - Consists of the area bounded on the: north by Bluff Run and Glebe Run, east by Route 738 and Oak Crest Drive, south by Routes 657, 614 west by Route 208, 601, and 713.

Zone 13 - Consists of the area bounded on the: north by Route 606, east by Routes 208 and 650, and south by Route 208, west by Routes 612, 601, and 655.

Zone 14 - Consists of the area bounded on the: north by Route 601, east by Route 655, south by Lake Anna, west by Routes 612 and 719.

Zone 18 - Consists of the area bounded on the: north by Routes 608 and 606, east by Routes 612 and 719, south by Spotsylvania/Louisa County line (North Anna River), west by Orange/Spotsylvania County line.

Zone 19 - Consists of the area bounded on the: north by Route 608, east by Route 612, south by Route 606, west by Route 606.

Zone 20 - Consists of the area bounded on the: north by Route 608, east by Routes 649 and 606, south by Route 208, west by Routes 612, 606, and 650.

Zone 21 - Consists of the area bounded on the: north by Routes 208 and 606, east by Routes 647 and 738, south by Route 605, west by Bluff Run, Glebe Run, Oak Crest Drive and Route 738.

Zone 22 - Consists of the area bounded on the: north by Route 604 and 605, east by Spotsylvania/Caroline County line, south by North Anna River, west by Route 622 and 738.

The recommended evacuation routes for Spotsylvania County are Routes 208, 601, 605, 606, 608, 612, 614, 647, 652, 653, 658, 719 and 738. The Evacuation Assembly Centers for Spotsylvania County are Chancellor High School and Massaponax High School.

Caroline County:

Zone 23 - Consists of the area bounded on the: north by Route 738, east by Route 738, south by North Anna River west by Caroline/Spotsylvania County line.

The recommended evacuation routes for Caroline County are Routes 658 and 738. The Evacuation Assembly Center for Caroline County is Caroline County High School.

Hanover County:

Zone 24 - Consists of the area bounded on the: north by North Anna River, east by Route 738 south by Routes 608, 680, 729, 658, 715, 739 and 800, west by Hanover/Louisa County line.

The recommended evacuation routes for Hanover County are Routes 618, 658, 680 and 715. The Evacuation Assembly Center for Hanover County is Liberty Middle School.

Commonwealth of Virginia Radiological Emergency Response Plan  
Appendix 4 – Notification and Warning

Orange County:

Zone 17 - Consists of the area bounded on the: north by Routes 653 and 629, east by Orange/Spotsylvania County line south by Orange/Louisa County line (North Anna River), west by Colonial Pipeline.

The recommended evacuation routes for Orange County are Routes 522, 612, 629, 653 and 719. The Evacuation Assembly Center for Orange County is Prospect Heights Middle School.



## **Surry Power Station**

### Surry County:

Zone 1 - Town of Surry

Zone 2 - Consists of the area bounded on the: north by the James River, east by Route 31, south by Route 10, west by Route 609, 610 and East over Drive.

Zone 3 - Consists of the area bounded on the: north by Route 10, east by Route 616, south by Moores Swamp, Cypress Run and Route 648, west by Route 618.

Zone 4 - Consists of the area bounded on the: north by the James River, east by Routes 636 and 634, south by Route 10, west by Route 31.

Zone 5 - Consists of the area bounded on the: north by the James River, east by Routes 633 and 634, south by Route 10, west by Routes 636 and 634.

Zone 6 - Consists of the area bounded on the: north and east by Route 650, south by Routes 10 and 634, west by Routes 633, 634 and the James River.

Zone 7 - Consists of the area bounded on the: north by Route 10, east and south by Route 617, west by Routes 616, Cypress Run and Mill Swamp.

Zone 8 - Consists of the area bounded on the: north and east by the James River, south by Hog Island State Wildlife Management Area west by Route 650 and the James River.

Zone 9 - Consists of the area bounded on the: north by Hog Island State Wildlife Management Area, east by the James River, south by Routes 686, 628 and 10, west by Route 650.

Zone 10 - Consists of the area bounded on the: north by Route 10, east by Route 627, south by the Surry County and Isle of Wight County line and West by Routes 625 and 617.

Zone 12 - Consists of the area bounded on the: north by Route 10, east by Lawnes Creek, south by Isle of Wight County line, west by Route 627.

The recommended evacuation routes for Surry County are Routes 10, 31, 616, 617, 618, 622, 626, 627, 630 and 650. The Evacuation Assembly Center for Surry County is the L.P. Jackson Middle School.

### Isle of Wight County:

Zone 9 - Consists of the area bounded on the: north by Hog Island State Wildlife Management Area, east by the James River, south by Routes 686, 628 and 10, west by Route 650.

Zone 11 - Consists of the area bounded on the: north by Surry County line, east by Route 627, south and west by Route 626.

Zone 13 - Consists of the area bounded on the: north by Routes 686 and 628, east by the James River, south by Routes 673, 10, 678, and 626, west by Route 627, Isle of Wight County line and Lawnes Creek.

The recommended evacuation routes for Isle of Wight County are Routes 10, 626, 627 and 708. The Evacuation Assembly Center for Isle of Wight County is Smithfield Middle School.



Commonwealth of Virginia Radiological Emergency Response Plan  
Appendix 4 – Notification and Warning

The City of Newport News:

Zone 14 - Fort Eustis.

Zone 15 - Consists of the area bounded on the: north by Route 173, east by Jefferson Avenue, Bland Boulevard, C&O Railroad, Sluice Mill Pond and Deep Creek, south by the James River and the mouth of Warwick River and west by Warwick River/Fort Eustis shoreline and Lucas Creek.

Zone 16 - Consists of the area bounded on the: north and east by York County line, east by Route 173, south by Denbigh Boulevard, Route 173, Lucas Creek and Warwick River, west by Warwick River/Fort Eustis boundary line and Skiffes Creek.

The recommended evacuation routes for Newport News are Routes 60, 105, 143, 173 and Interstate 64. The Evacuation Assembly Center for Newport News is Warwick High School / Gildersleeve Middle School and Hines Middle School.

James City County:

Zone 18A - Consists of the area bounded on the: north by Penniman Road, east by Oak Drive and Government Road, south and west by Williamsburg City line.

Zone 18B - Consists of the area bounded on the: north by James City County line, east by Busch Gardens' eastern edge and Busch Creek, south by James River, west by Colonial Parkway.

Zone 18C - Consists of the area bounded on the: north by Boundary Road West, east by James City County line, south by James River, Carters Grove and US 60, west by Busch Gardens' eastern edge and Busch Creek.

Zone 18D - Consists of the area bounded on the: north by Carters Grove and US 60, east by Skiffes Creek Reservoir, south by Skiffes Creek, west by James River.

Zone 22A - Consists of the area bounded on the: north by Powhatan Creek, east by Lake Powell and Mill Creek, south and west by James River.

Zone 22B - Consists of the area bounded on the: north by Route 199, east and south by Colonial Parkway, west by Mill Creek, Lake Powell and Route 31.

Zone 23 - Consists of the area bounded on the: north by Routes 614, 612, 658, east by Williamsburg Cityline, south by Routes 31, Lake Powell and Hickory Signpost Road and west by Powhatan Creek.

Zone 24 - Consists of the area bounded on the: north by Gordon Creek, east by Powhatan Creek, Hickory Signpost Road and Lake Powell, south by Powhatan Creek and James River, west by Chickahominy River.

The recommended evacuation routes for James City County are Routes 31, 60, 143, 614, 199, Interstate 64 and the Colonial Parkway. The Evacuation Assembly Center for James City County is the Warhill School Complex.