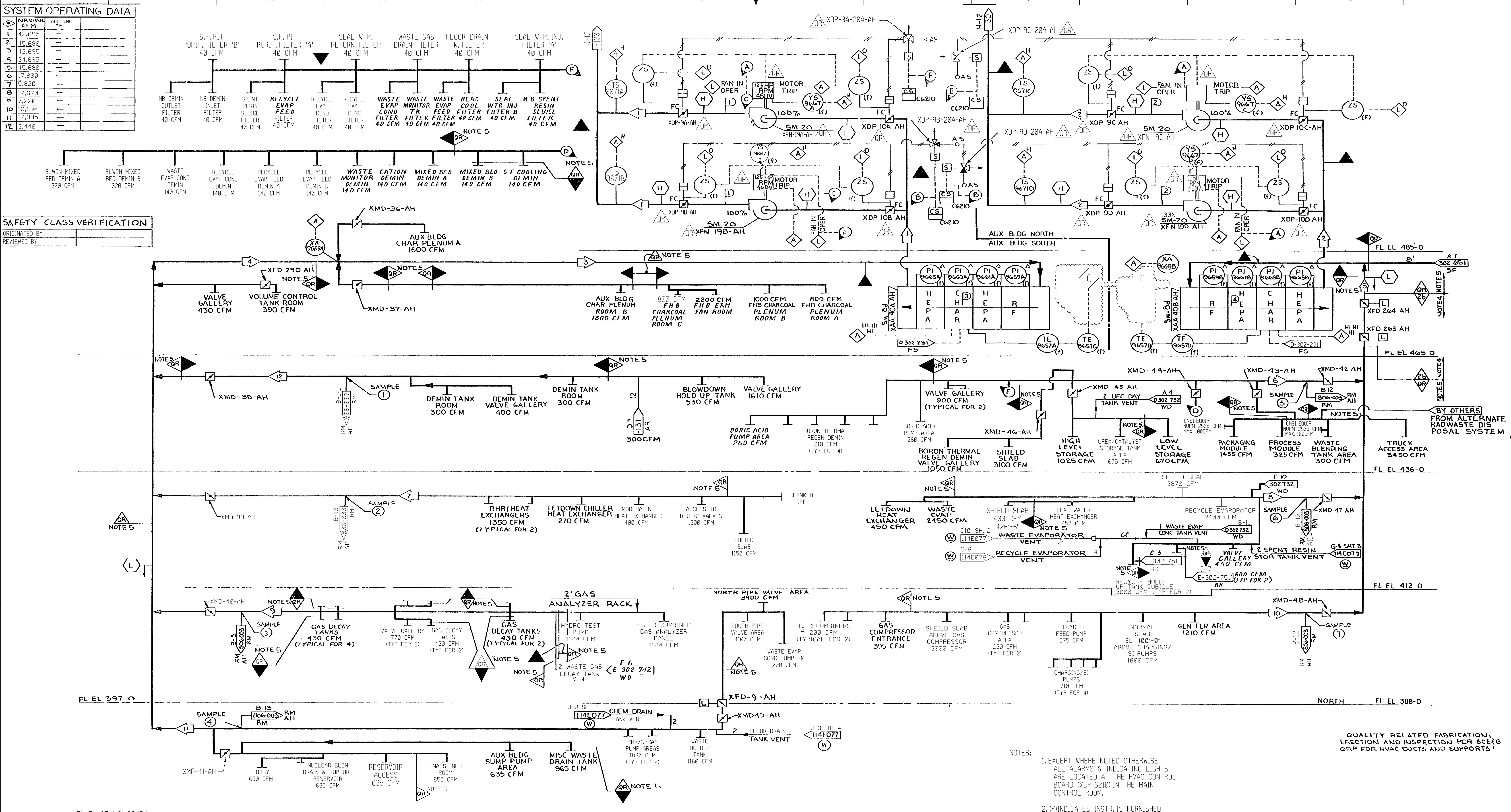


SYSTEM OPERATING DATA		
NO.	AIR QUA. CFM	AIR TEMP °F
1	42,695	
2	45,680	
3	42,695	
4	34,695	
5	45,680	
6	17,830	
7	5,820	
8	17,670	
9	7,220	
10	10,180	
11	17,395	
12	3,440	

SAFETY CLASS VERIFICATION	
ORIGINATED BY	
REVIEWED BY	

SYSTEM DESIGN DATA		
NO.	AIR FLOW CFM	AIR TEMP °F
4	45,680	65°-95°
3	45,000	65°-95°
2	45,680	65°-95°
1	42,350	65°-95°



- (4 PLACES) (A) XFN-19A-AH AND XFN-19C-AH OR XFN-19B-AH AND XFN-19D-AH MUST BE RUNNING TO ALLOW XFN-24A-AH OR XFN-24B-AH TO RUN
- (4 PLACES) (B) FANS MAY BE MANUALLY RE-STARTED WITH AVAILABLE DIESEL POWER AFTER BLACKOUT
- (2 PLACES) (C) XFN-19A-AH OR XFN-19B-AH MUST BE RUNNING TO ALLOW HCV-014 TO OPEN

ALL COMPONENTS OF THIS SYSTEM ARE NON NUCLEAR SAFETY EXCEPT AS NOTED

- NOTES:
- EXCEPT WHERE NOTED OTHERWISE ALL ALARMS & INDICATING LIGHTS ARE LOCATED AT THE HVAC CONTROL BOARD (XCP-6210) IN THE MAIN CONTROL ROOM.
 - (f) INDICATES INSTR. IS FURNISHED WITH EQUIPMENT.
 - FOR SAFETY CLASSIFICATION OF INSTRUMENTS, SEE INSTRUMENT LIST.
 - SPECIAL HIGH PRESSURE DUCT CONSTRUCTION WEST PENETRATION ACCESS AREA.
 - ALL DUCTWORK IDENTIFIED AS QR TO BE PER QRP-4.
 - ALL EQUIPMENT IDENTIFIED AS QR TO BE PER TRP-31

QUALITY RELATED FABRICATION, ERECTION AND INSPECTION PER SCE&G QRP FOR HVAC DUCTS AND SUPPORTS

ESSENTIAL

DRAWING LEGIBILITY CLASS 1
SCE&G CAD ENHANCED

FSAR Figure 9.4-8
ASSOCIATED WITH
FSAR Figure 12.2-2

SOUTH CAROLINA ELECTRIC & GAS COMPANY

VIRGIL C. SUMNER NUCLEAR STATION

BUILDING SERVICE SYSTEM FLOW DIAGRAM
AUXILIARY BUILDING CHARCOAL EXHAUST SYSTEM FLOW DIAGRAM

DESIGN ENGINEERING

30	09/17/02	DDJ	REVISED PER ECR-70249	MGR	DKW
29	10/03/01	DDJ	REVISED PER ECR-70028	MGR	DDJ
28	08/08/96	JMR	REVISED PER MRF-22305	MGR	RLB
27	02/07/94	ACI	REVISED PER MRF-21511	MGR	JMG
26	04/22/93	JMH	REVISED PER CGSS-93-0328	DVW	GAA
31	05/14/2020	CMS	REVISED PER ECR-72654	CHK	AJL

NO. DATE BY REVISION

D-912-125

31

