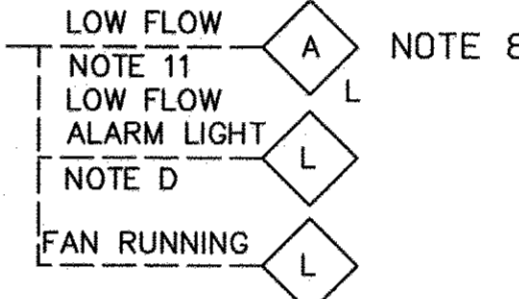
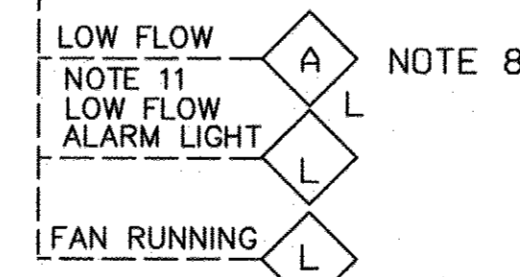
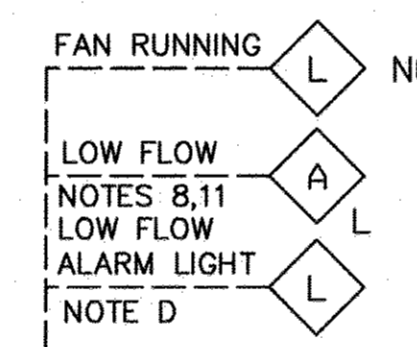
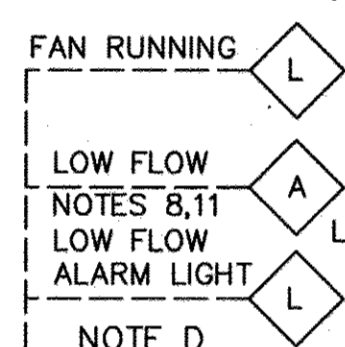
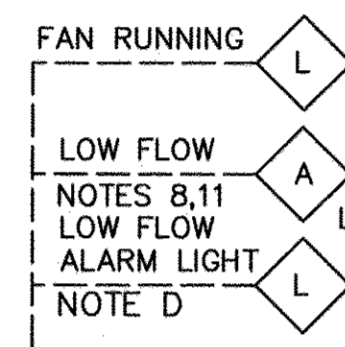
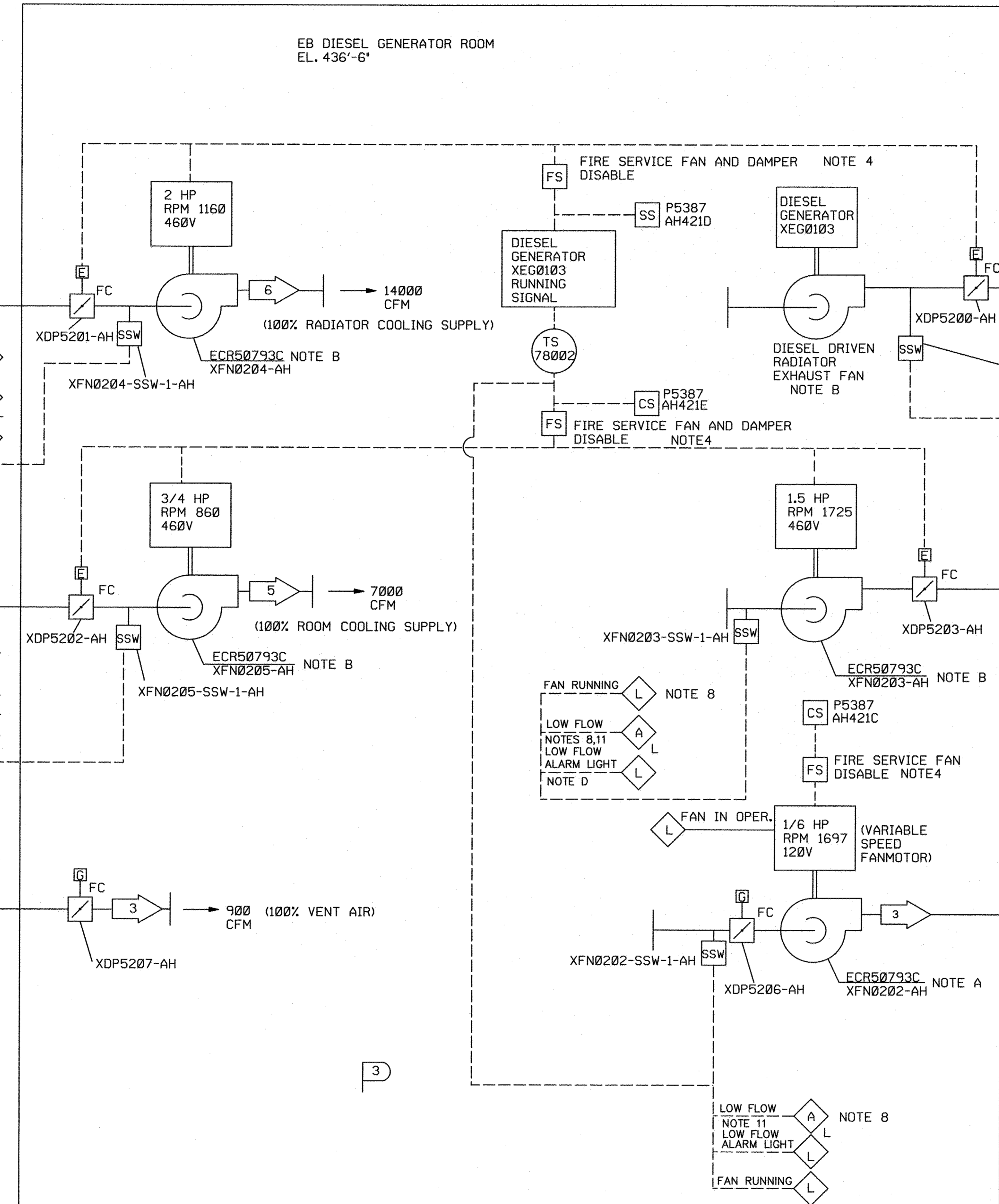


SYSTEM OPERATING DATA NOTE 10

	AIR FLOW CFM	AIR TEMP. ° F
3	900	19-120
4	19000	95-200
5	3000	19/120
6	14000	19/95

- FAN OPERATION NOTES:
- VENTILATION FANS XFN0200 AND XFN0202 OPERATE AT ALL TIMES. IF A LOSS OF FLOW IS DETECTED AN ALARM IS GENERATED AND ADDITIONAL FANS ARE STARTED AUTOMATICALLY.
  - XFN0204 STARTS AUTOMATICALLY WHEN XEG0103 IS STARTED. XFN0203 AND XFN0205 WILL START AUTOMATICALLY IF DG ROOM TEMPERATURE INCREASES ABOVE 80 DEG F AND DG IS RUNNING. XFN0203 AND XFN0205 WILL SECURE IF ROOM TEMPERATURE DROPS BELOW 60 DEG F.
  - HVAC ALARMS ARE INDICATED ON XPN5387. GENERAL "EB HVAC TROUBLE ALARM" IS INDICATED ON TEMP MONITORING SYSTEM AND ANNUNCIATED IN MAIN CONTROL ROOM.
  - COMMON LOW DG COOLING FLOW ALARM LIGHT ON XPN5387.



GENERAL NOTES (1-11):  
SEE SHEET 1

**ESSENTIAL**

ALL SYSTEM COMPONENTS ARE  
NON-NUCLEAR SAFETY RELATED

DRAWING CLASS  
LEGIBILITY 1

FSAR Figure 9.4-35 SH. 2

SOUTH CAROLINA ELECTRIC & GAS COMPANY  
WRGL C. SUMNER NUCLEAR STATION  
BUILDING SERVICE SYSTEM FLOW DIAGRAM  
EB HVAC DGI ROOM

DESIGN ENGINEERING			
NO.	DATE	BY	REVISION
1	4/28/15	JTS	REVISED PER ECR-50793C
0	2/3/15	JMR	ISSUED PER ECR-50793

NO.	DATE	BY	REVISION	CHK.	BY/APPROVAL
1	4/28/15	JTS	REVISED PER ECR-50793C	MGR	RS
0	2/3/15	JMR	ISSUED PER ECR-50793	MGR	RS

SYSTEM DESIGN DATA NOTE 10

	AREA AIR FLD W CFM	AREA AIR TE MP, ° F	AREA EMERGENCY* AIR TEMP. ° F
3	900/21,900	19/120	19/120

\*EMERGENCY CONDITION EXISTS WHEN  
NORMAL POWER IS LOST AND DG IS  
PROVIDING POWER

