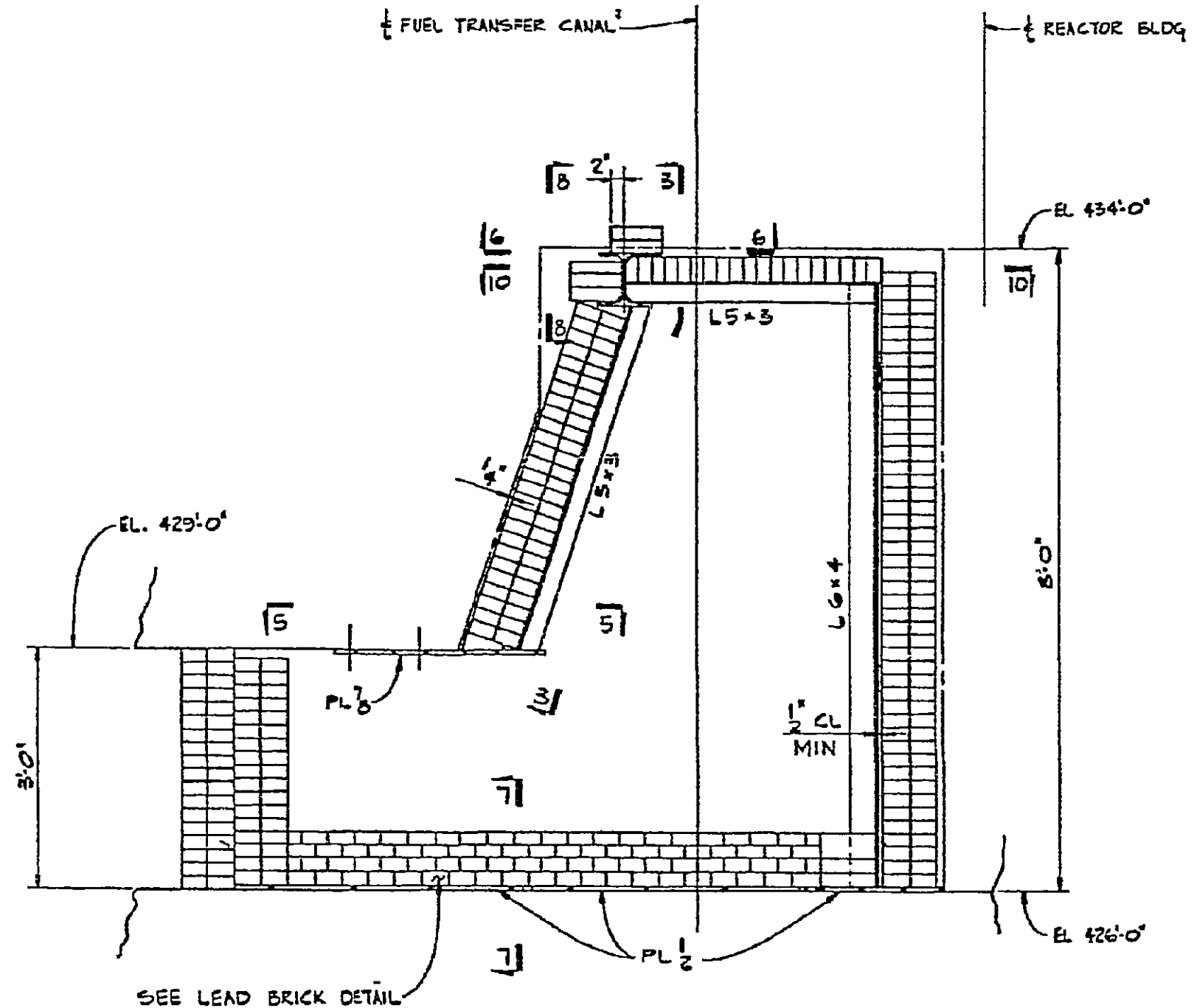
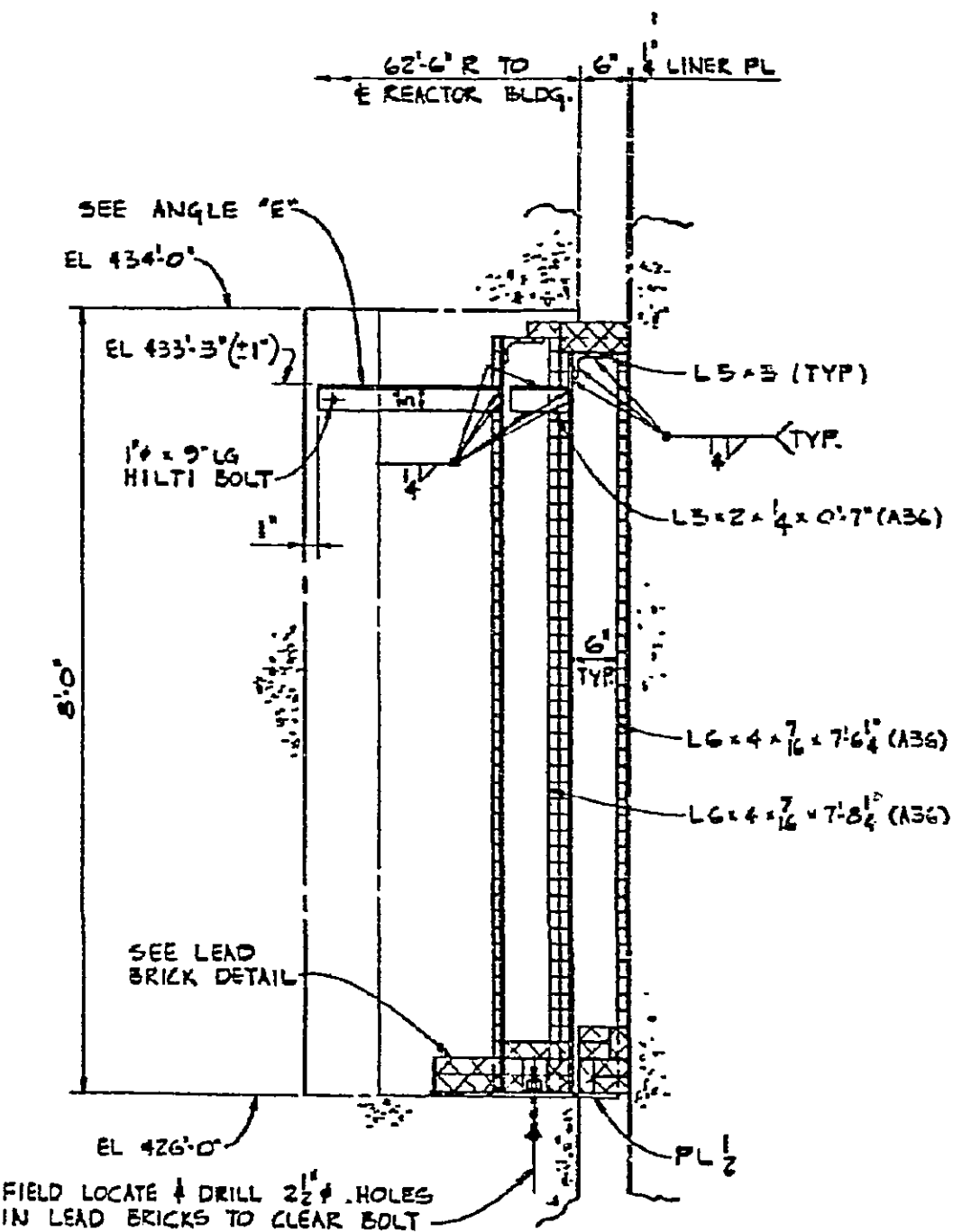


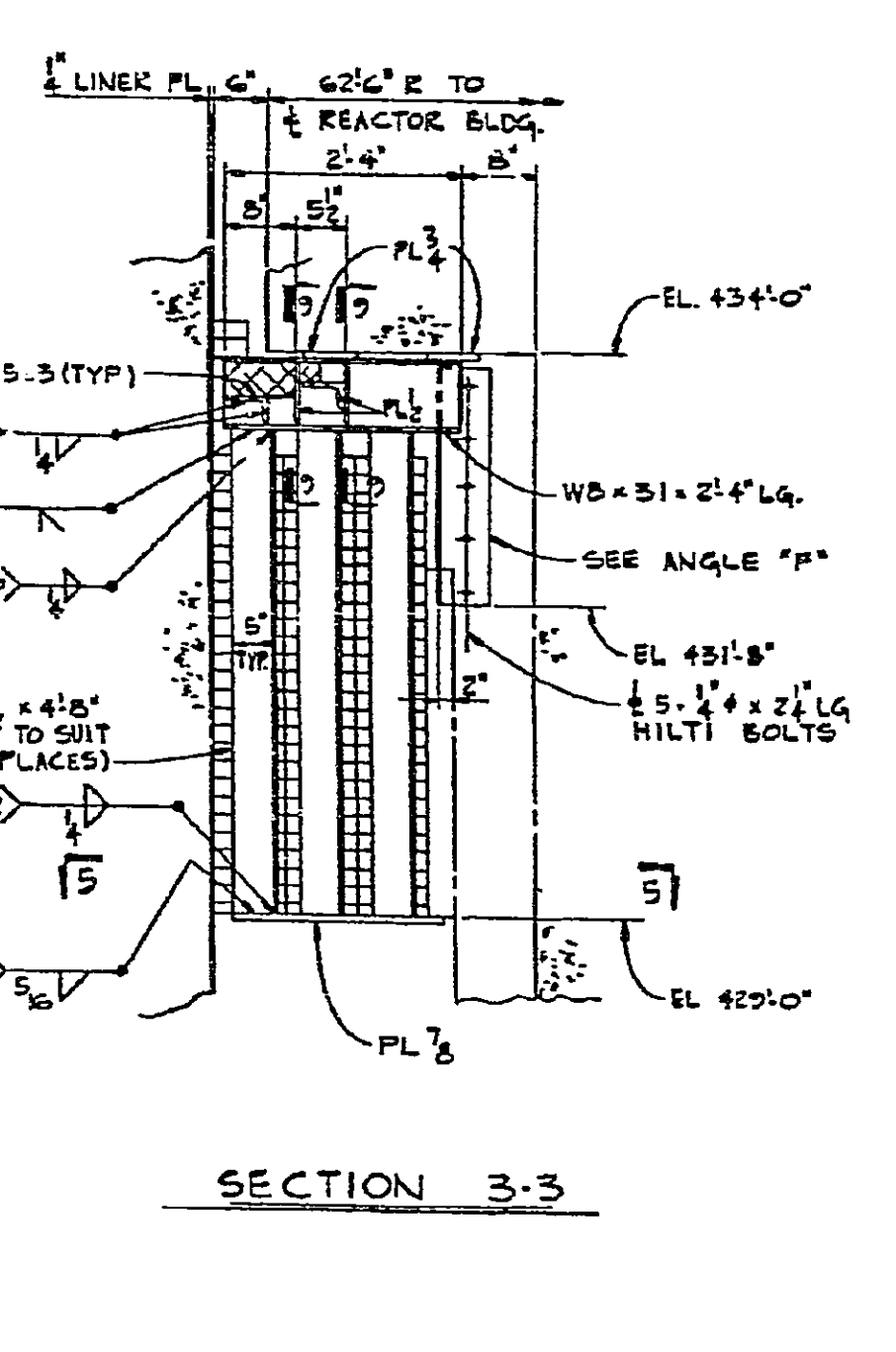
LOCATION PLAN OF PLATES c EL. 426'-0"



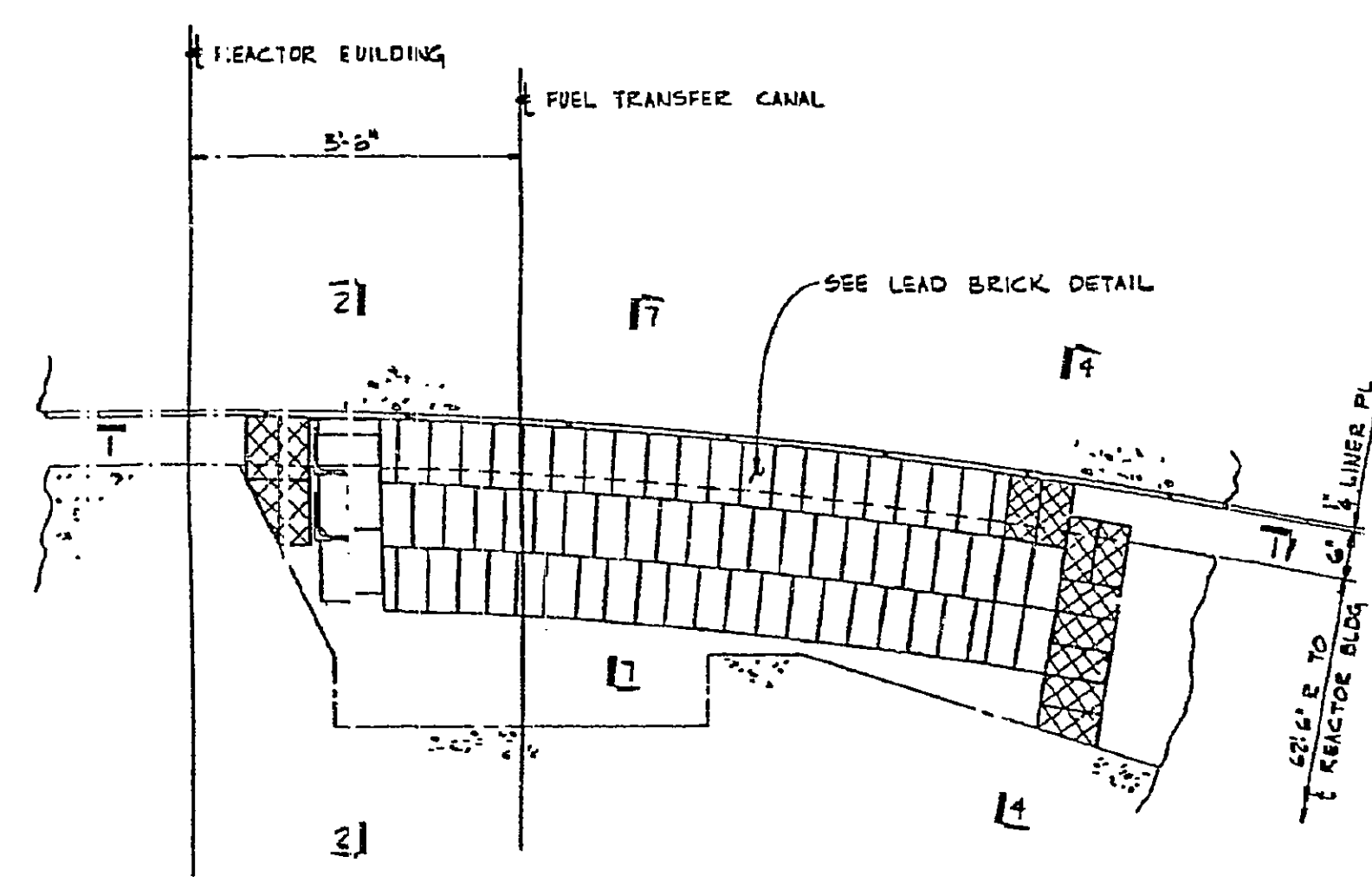
ELEVATION 1-1



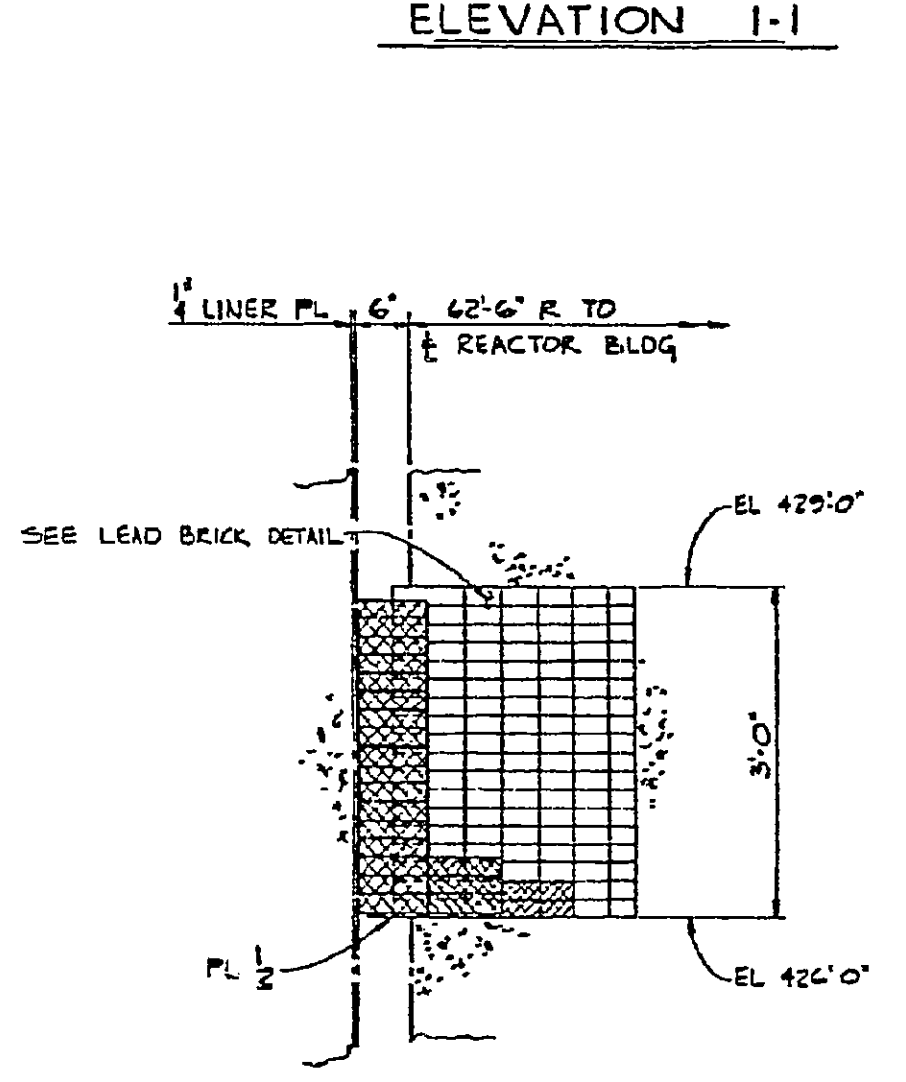
SECTION 2-2



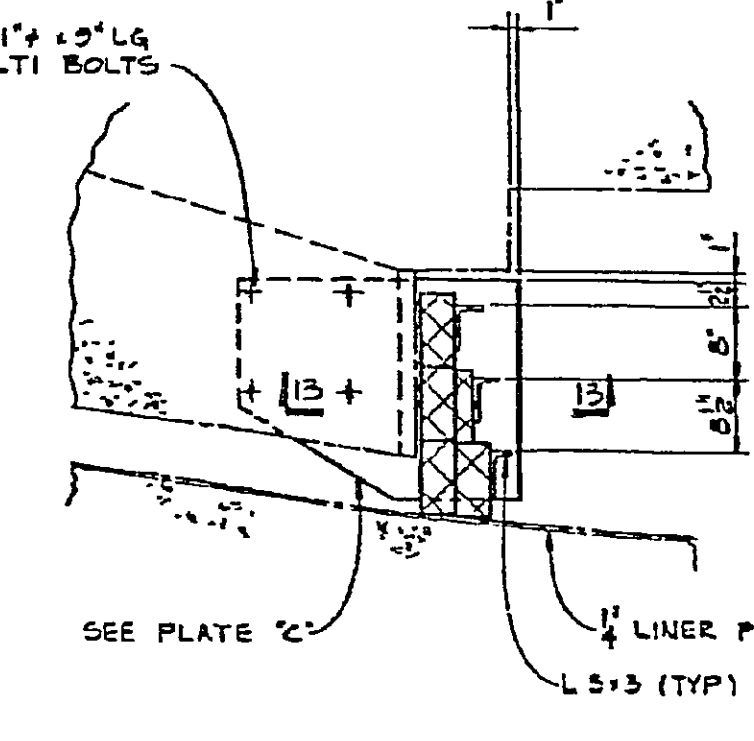
SECTION 3-3



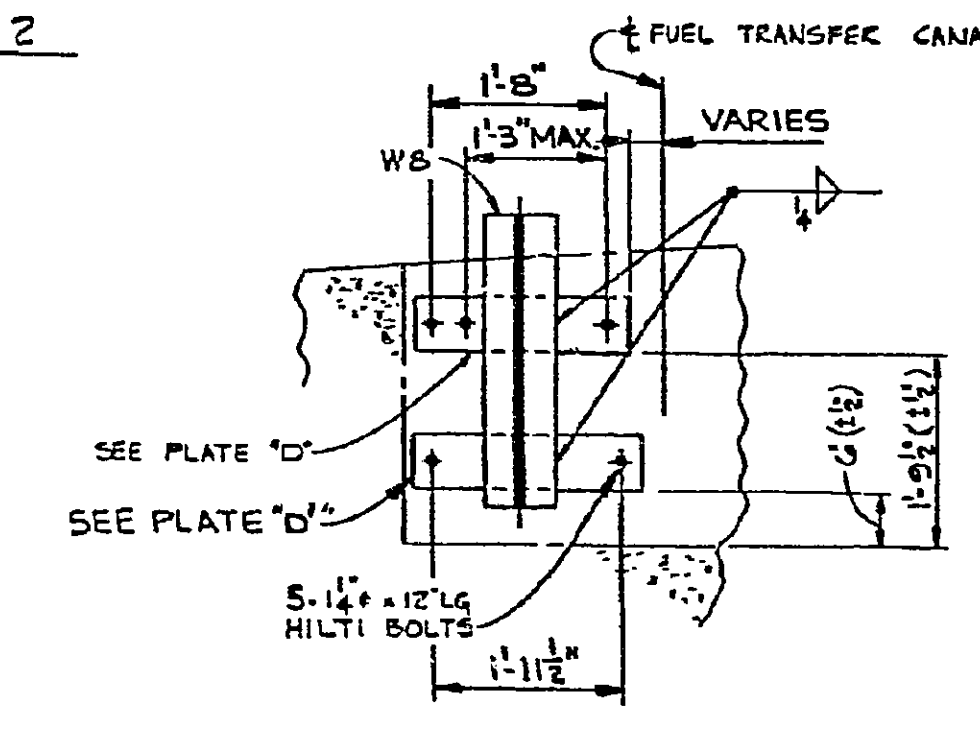
LOCATION PLAN OF LEAD BRICKS ABOVE EL. 426'-0"



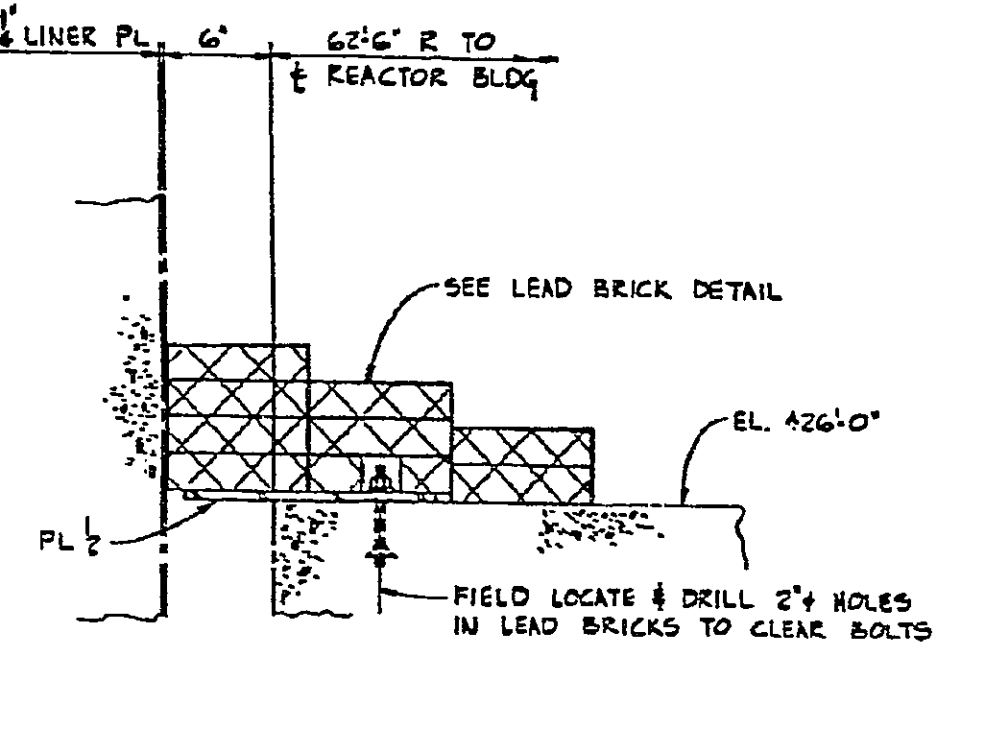
SECTION 4-4



SECTIONAL PLAN 5-5



SECTIONAL PLAN 6-6



SECTION 7-7

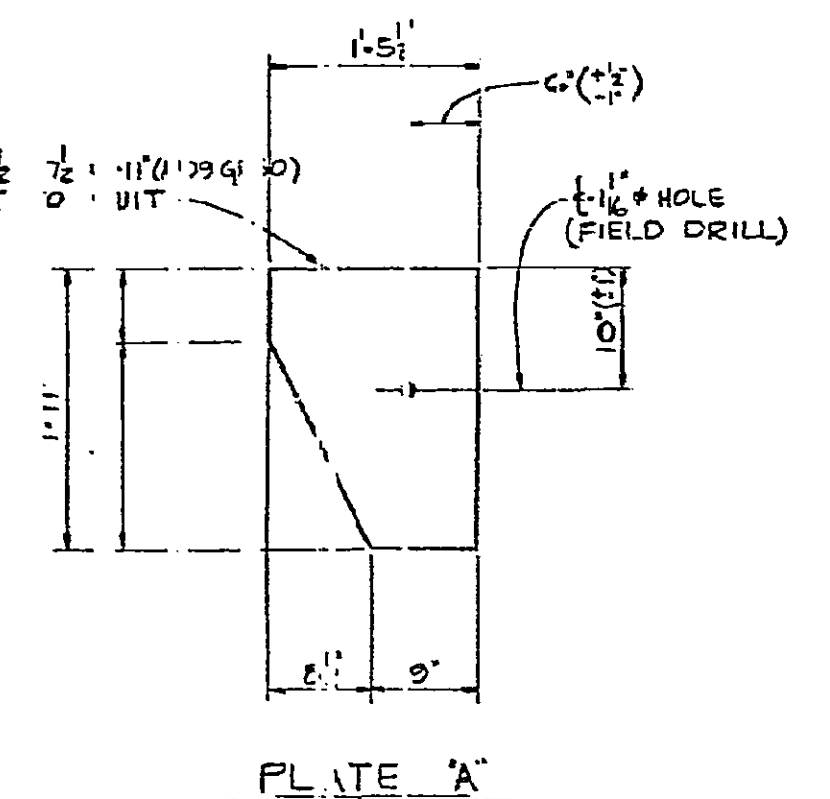


PLATE 'A' ONE REQD.

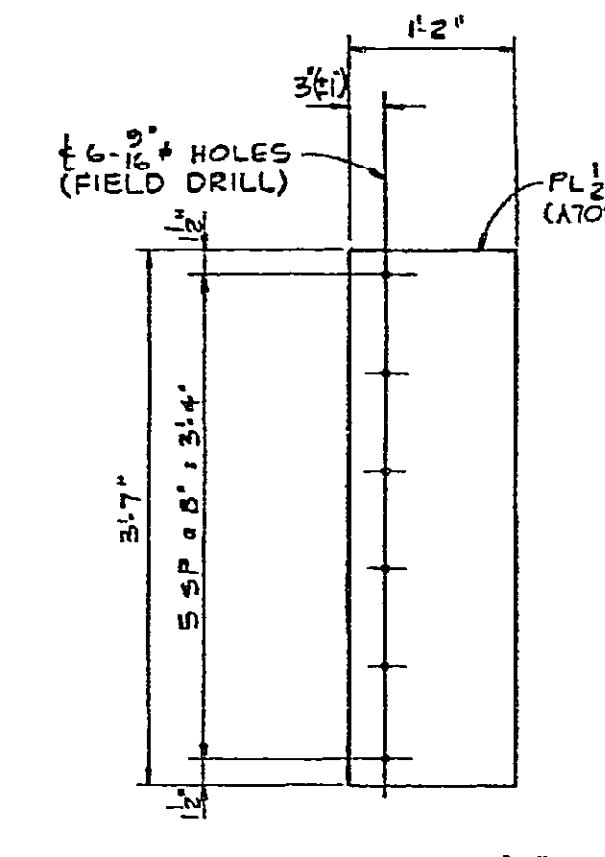
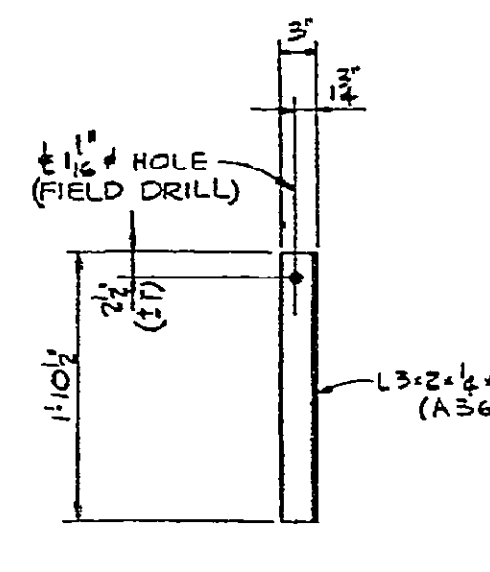
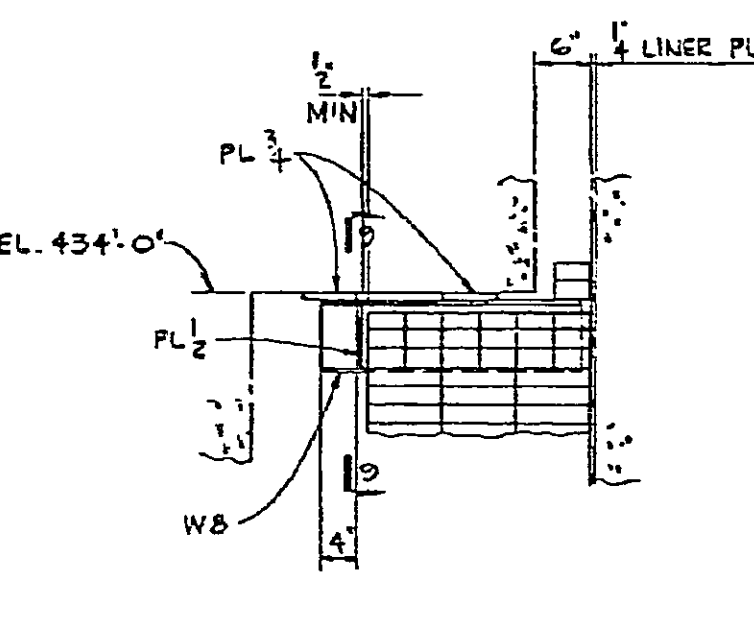


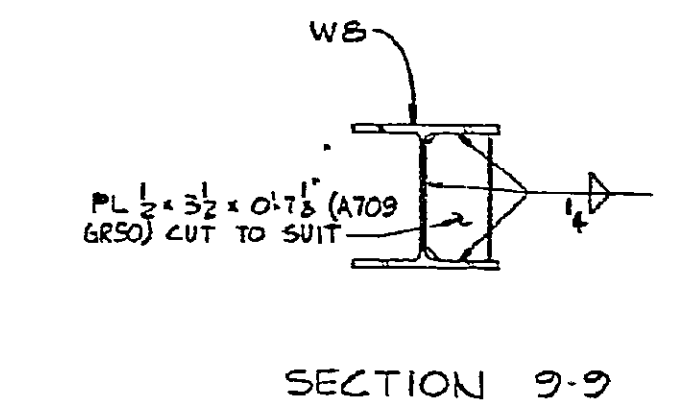
PLATE 'B' 2 REQD.



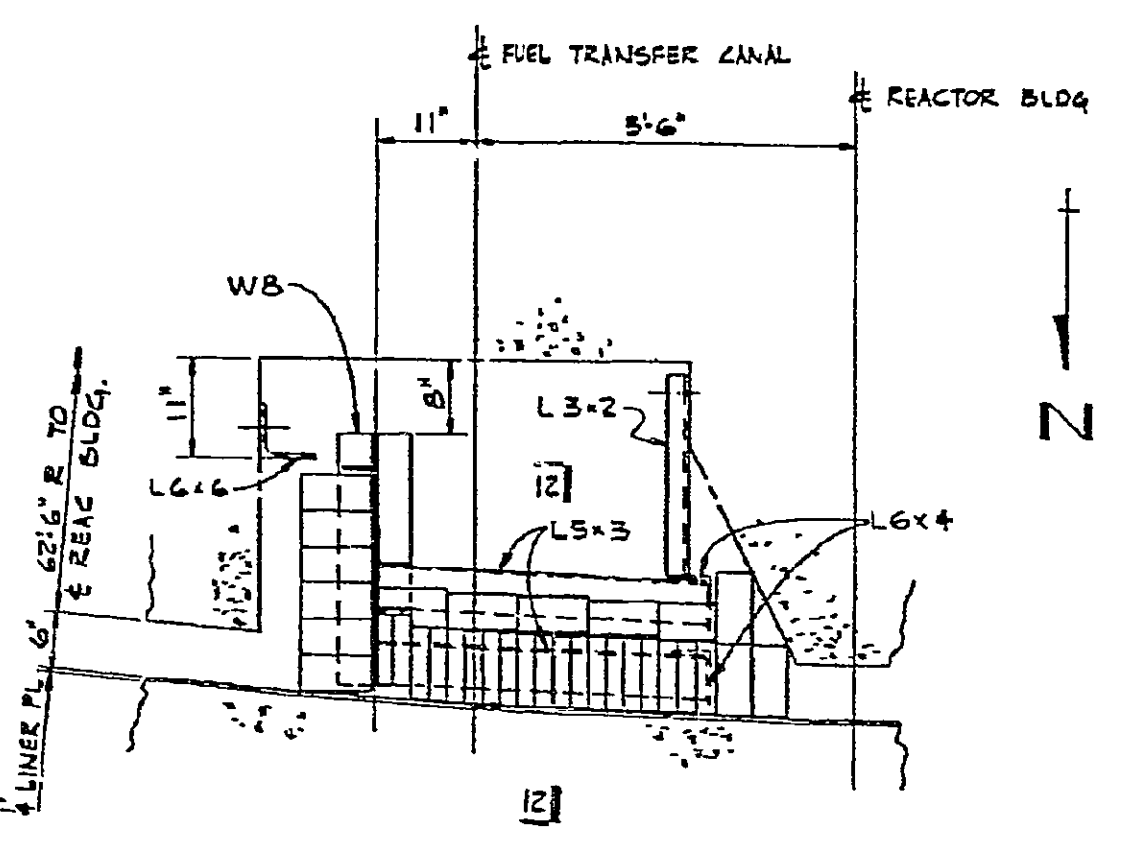
ANGLE 'E' ONE REQD.



SECTION 8-8



SECTION 9-9



SECTIONAL PLAN 10-10

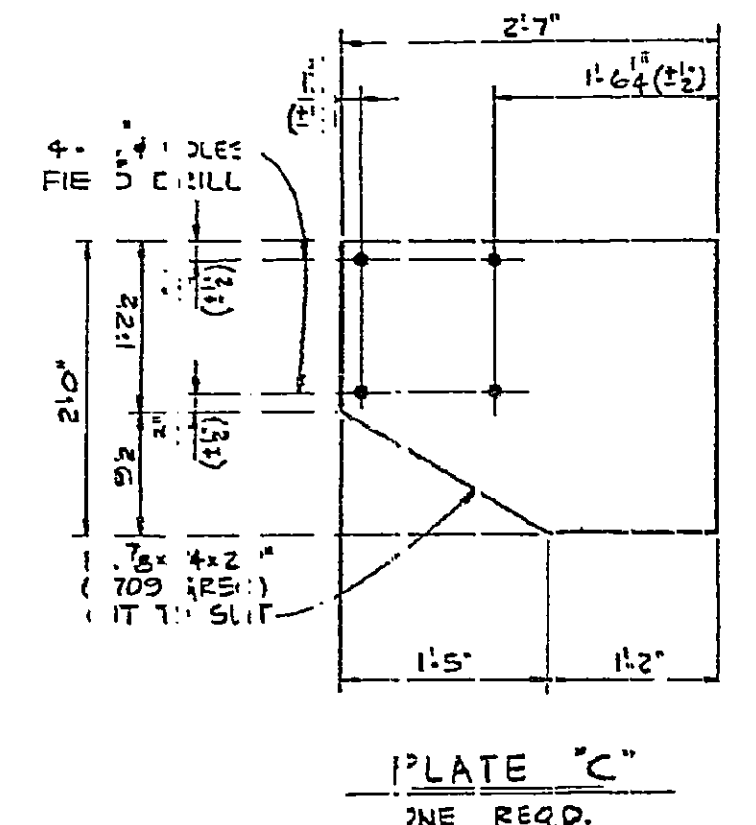


PLATE 'C' ONE REQD.

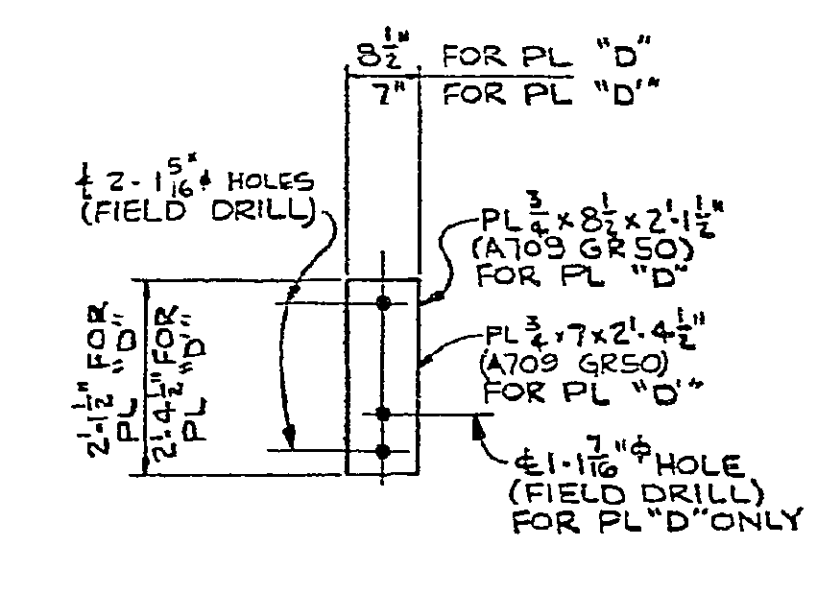
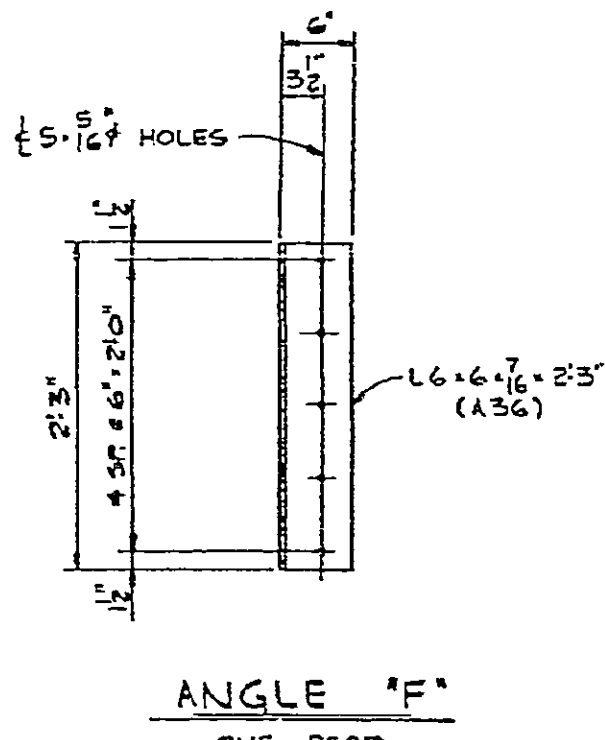
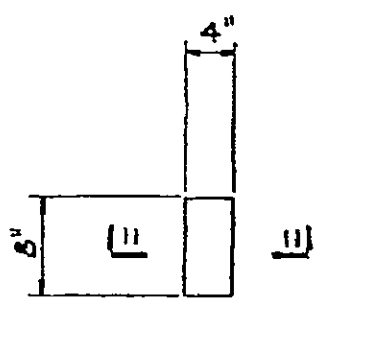


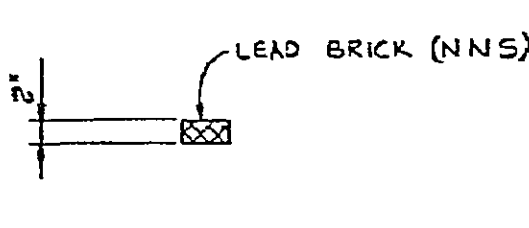
PLATE 'D' ONE REQD. AS NOTED



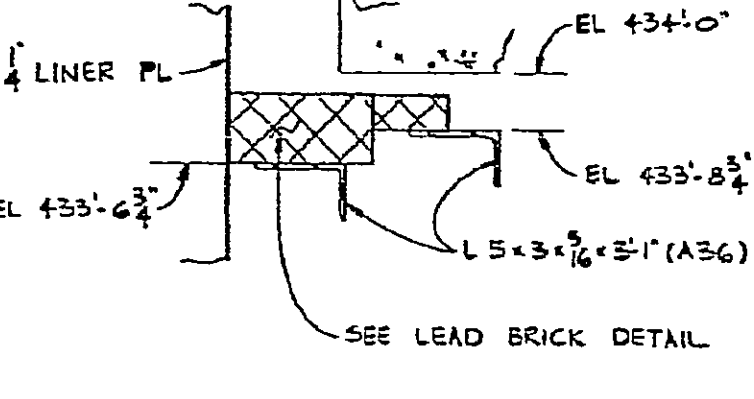
ANGLE 'F' ONE REQD.



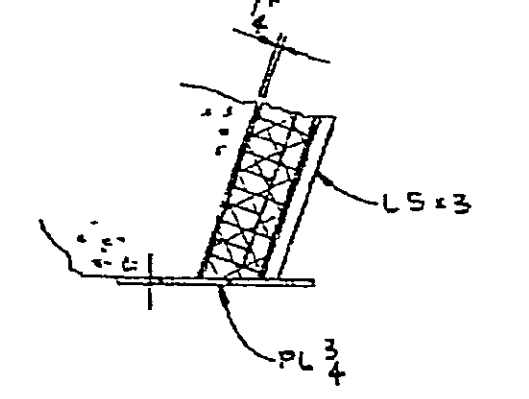
LEAD BRICK DETAIL APPROXIMATELY 700 REQD.



SECTION 11-11



SECTION 12-12



SECTION 13-13

- NOTES:-
1. NUCLEAR SAFETY RELATED (NSR), FOR ITEMS SPECIFICALLY MARKED NON-NUCLEAR SAFETY (NNS), SPECIFICATION SP-711-441-00 IS NOT APPLICABLE.
 2. QUALITY ASSURANCE PROGRAM REQUIREMENTS 04-1. SEE GAI SPECIFICATION QUALITY ASSURANCE PROGRAM REQUIREMENTS SP-701-441-00.
 3. FABRICATION OF MISCELLANEOUS STEEL TO BE IN ACCORDANCE WITH GAI SPECIFICATION MISCELLANEOUS STEEL SP-527-44481-000.
 4. ERECTION OF STRUCTURAL STEEL TO BE IN ACCORDANCE WITH GAI SPECIFICATION ERECTION OF STRUCTURAL STEEL SPECIFICATION SP-201-04481-000.
 5. ALL EXPOSED CARBON STEEL SURFACES TO BE PAINTED IN ACCORDANCE WITH GAI SPECIFICATION PAINTING STEEL INSIDE REACTOR BUILDING SP-711-441-00.

- REFERENCES:-
- E-111-251 REACTOR BUILDING INTERIOR WALLS - PRIMARY SHIELD WALL AND FUEL TRANSFER CANAL WALLS - EL. 424'-4" AND EL. 424'-5-3/4" - CONCRETE OUTLINE

THIS IS A NUCLEAR SAFETY RELATED DOCUMENT. NO DEVIATION SHALL BE INITIATED OR PERFORMED WITHOUT PRIOR DOCUMENTATION AND WRITTEN APPROVAL.

FSAR Figure 12.1-22

SOUTH CAROLINA ELECTRIC & GAS COMPANY

WEST CONSUMERS NUCLEAR STATION

REACTOR BUILDING - MISCELLANEOUS STEEL

FUEL TRANSFER CANAL SHIELDING

NO.	DATE	BY	REVISION	DESIGNER	CHECKER	DATE
3	4/26/57	DDJ	REVISED PER ECR-78028	MGR	DDJ	10/24/57
10	10/24/57	DDJ	REVISED PER ECR-78028	MGR	DDJ	10/24/57

