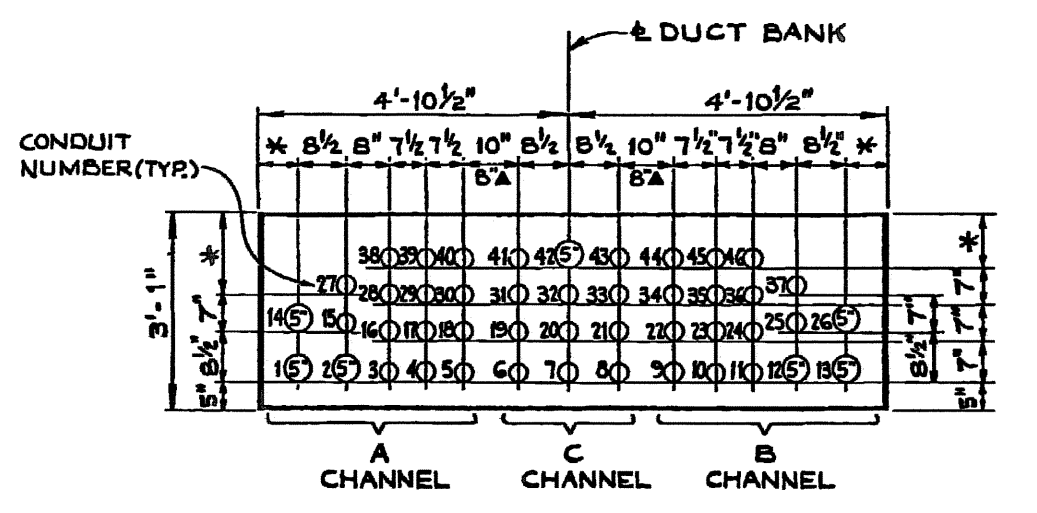


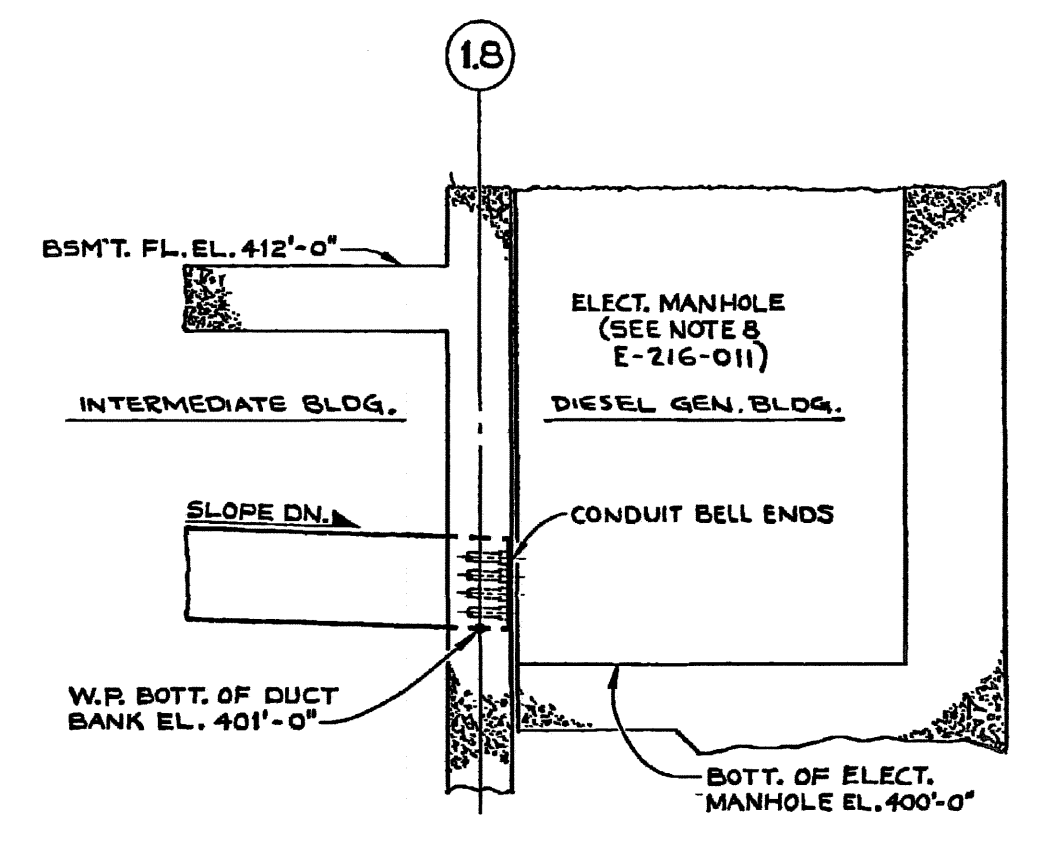
ENLARGED PLAN C
 SCALE: 1/8"=1'-0"
 (COORD. C-5 1 DWG. E-216-011)



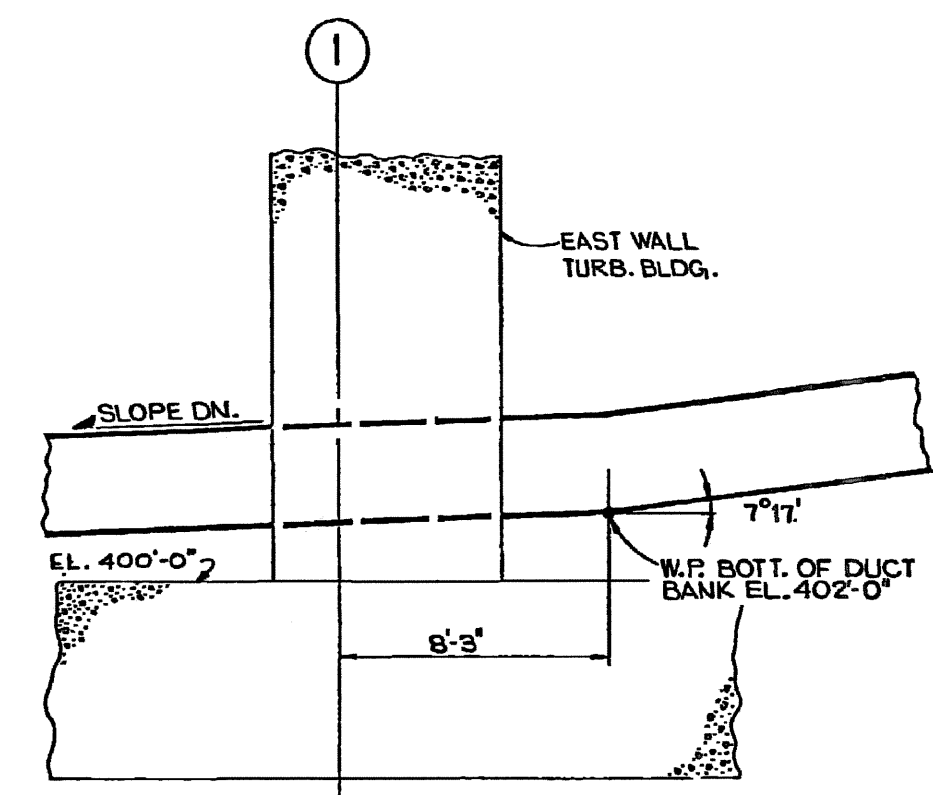
SECT. 1-1
 SCALE: NONE
 (COORDS. B-16 & E-15)
 (COORDS. B-12, D-14 & J-14; DWG. E-216-011)
 (COORDS. G-19 & C-14; DWG. E-216-013)
 (COORD. F-14 DWG. E-216-014)

CONDUIT CHART 1

CONDUIT NO.	SIZE	CONDUIT NO.	SIZE
1	5"	36	3 1/2"
2	5"	37	
3	3 1/2"	38	
4		39	
5	40	40	
6		41	
7		42	5"
8		43	3 1/2"
9		44	
10		45	
11		46	
12	5"	47	
13	5"	48	
14	5"	49	
15	3 1/2"	50	5"
16		51	3 1/2"
17		52	
18		53	
19		54	5"
20		55	3 1/2"
21		56	
22		57	
23		58	5"
24		59	3 1/2"
25		60	
26	5"	61	
27	3 1/2"		
28			
29			
30			
31			
32			
33			
34			
35			



SECT. 10-10
 SCALE: 1/4"=1'-0"
 (COORDS. B-15 & D-15)

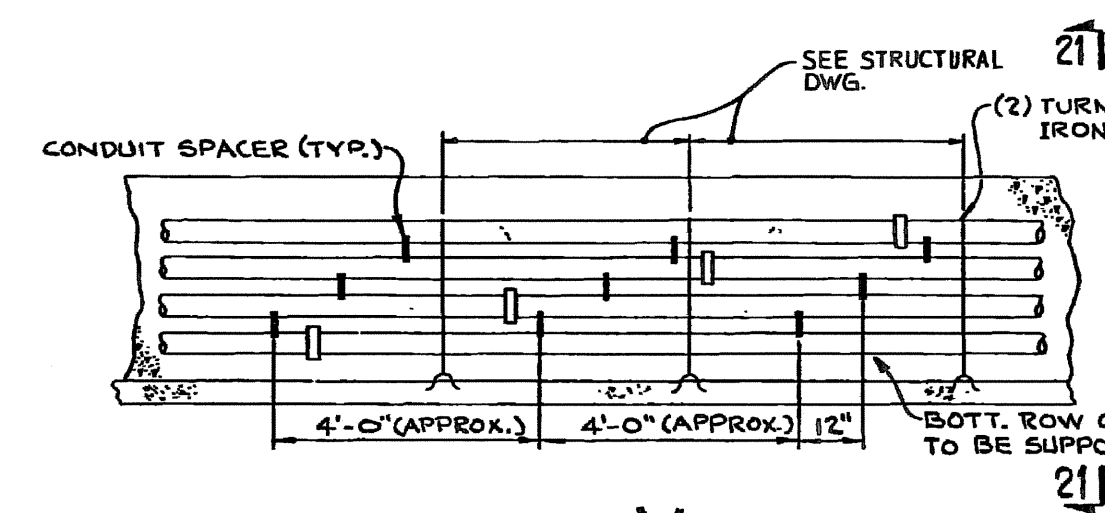


SECT. 11-11
 SCALE: 1/4"=1'-0"
 (COORD. E-14)

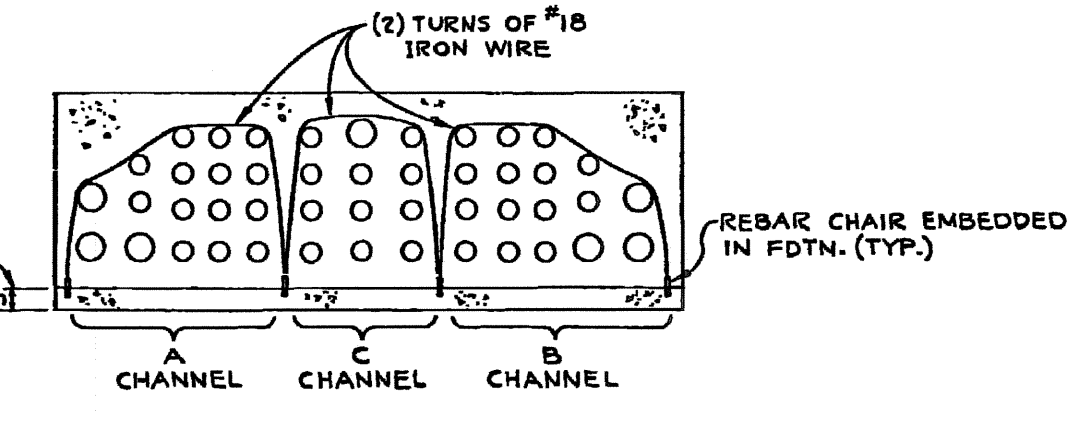
SEE BACKFILL DETAIL
 DWG. E-216-011

CONDUIT CHART 2

CONDUIT NO.	SIZE	CONDUIT NO.	SIZE	
62	2"	XX-6985X		
63				
64				
65				
66				
67		82	2"	
68	3"	EFU14B	83	
70	3"	EFUSA	84	



DETAIL 'E'
 TYPICAL SECTIONAL SIDE VIEW
 OF CONDUIT DUCT BANK
 ARRANGE CONDUIT SPACERS
 AS SHOWN

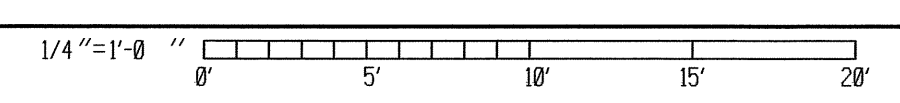


SECT. 21-21
 TYPICAL METHOD OF SECURING
 CONDUIT TO PREVENT LIFT
 NO SCALE
 (COORD. G-6)

SEE NOTES 9A & 9B
 (E-216-011)

THIS IS A
 NUCLEAR SAFETY RELATED
 DOCUMENT. NO DEVIATION SHALL BE
 INSTALLED OR PERFORMED WITHOUT PRIOR
 DOCUMENTATION AND WRITTEN APPROVAL

REFERENCES:
 E-216-011 DUCT RUNS FOR DIESEL GEN. CIRCUITS MAIN PLANT AREA -
 WEST END



FSAR Figure 8.3-2b

SOUTH CAROLINA ELECTRIC & GAS COMPANY

VIRGIL C. SUMNER NUCLEAR STATION

ELECTRICAL

DUCT RUNS FOR DIESEL GENERATOR CIRCUITS

MAIN PLANT AREA - EAST END

DESIGN ENGINEERING

V. C. SUMNER NUCLEAR STATION JENKINSVILLE, S.C.

1. DDJ	2. MGR	3. DDJ
--------	--------	--------

NO. DATE BY REVISION

11	10/25/07	JMR	REVISED PER ECR-70674	MGR	GC
10	9/24/08	DDJ	REVISED PER ECR-70028	MGR	DDJ

NO. DATE BY REVISION

CD. BY APPROVAL

E-216-012

SHT. NUMBER 11