

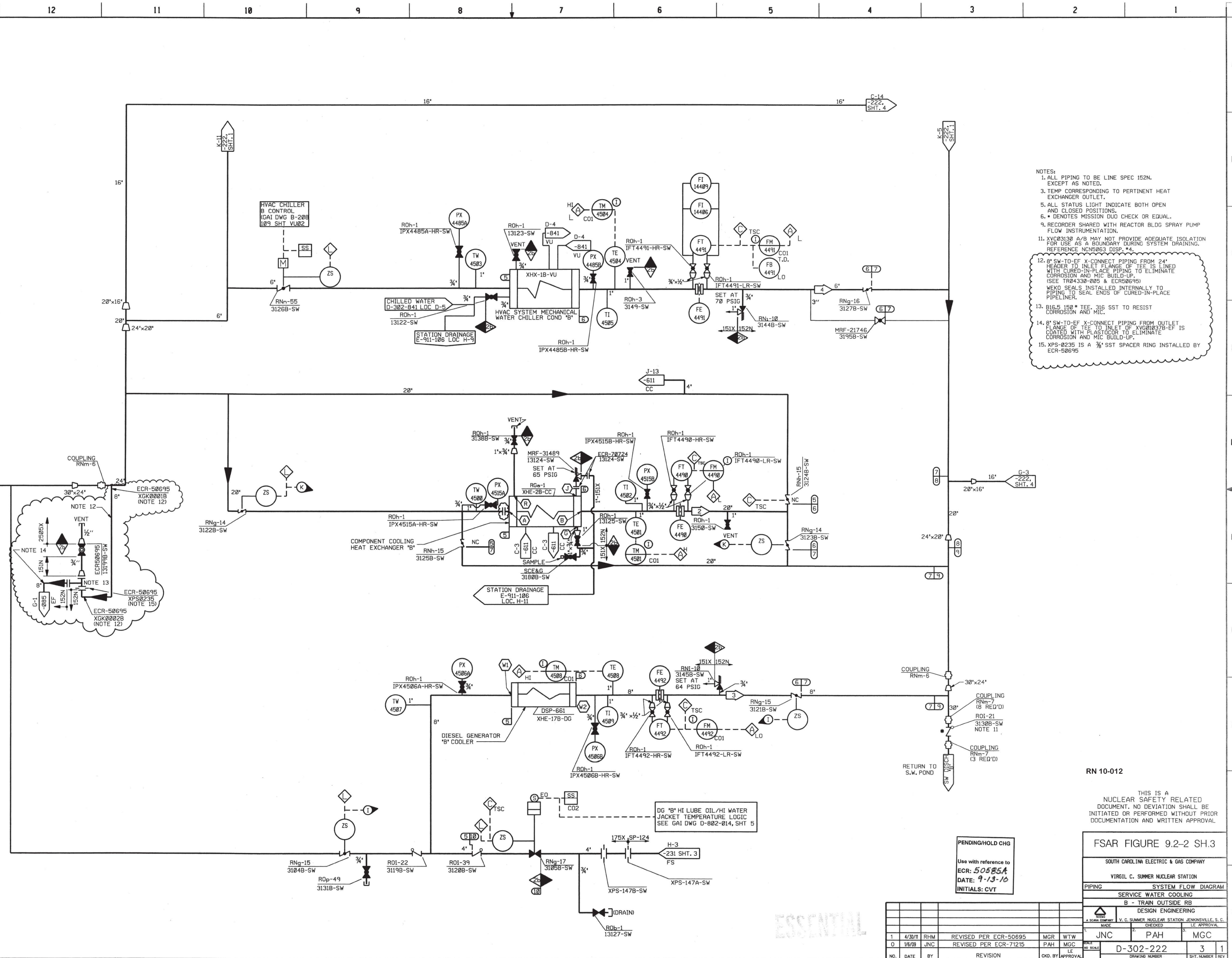
SYSTEM DATA				
ID	GPM	PSIG	F	REMARKS
2	9000	50	95	NORMAL
3	7700	50	130	POST ACCID
4	10000	50	95	NORMAL
5	820	50	116	POST ACCID
6	10000 to 600	45	> 65	NORMAL
7	500	45	> 65	POST ACCID

*APPROX.

HYDROSTATIC TEST TEMP. 60°									
ID	DATE	BY	PSIG	F	DURATION	HYDRC	BY	CHK	REMARK
10	125	95	165	95	<1%	210	RJS		
9	16	150	20	150	<1%	25	ECS		
8	16	95	20	214	<1%	25	ECS		
7	16	124	20	130		25	WTW/LRC		
6	65	124	65	130		82	WTW/LRC		
5	65	95	65	95		82	ECS		NOTE 3

DESIGN DATA									
ID	DATE	BY	PSIG	F	DURATION	HYDRC	BY	CHK	REMARK
1	NORMAL								

1/4" = 1' - 0"



- NOTES:
- ALL PIPING TO BE LINE SPEC 152N, EXCEPT AS NOTED.
 - TEMP CORRESPONDING TO PERTINENT HEAT EXCHANGER OUTLET.
 - ALL STATUS LIGHT INDICATE BOTH OPEN AND CLOSED POSITIONS.
 - DENOTES MISSION DIO CHECK OR EQUAL.
 - RECORDER SHARED WITH REACTOR BLOC SPRAY PUMP FLOW INSTRUMENTATION.
 - XVCR3130 A/B MAY NOT PROVIDE ADEQUATE ISOLATION FOR USE AS A BOUNDARY DURING SYSTEM DRAINING. REFERENCE NCS0603 DISP. #4.
 - 8" SW-TO-EF X-CONNECT PIPING FROM 24" HEADER TO INLET FLANGE OF TEE IS LINED WITH CURED-IN-PLACE PIPING TO ELIMINATE CORROSION AND MIC BUILD-UP. (SEE T84438-005 & ECR50695) WELD SEALS INSTALLED INTERNALLY TO PIPING TO SEAL ENDS OF CURED-IN-PLACE PIPELINE.
 - 616.5 150# TEE, 316 SST TO RESIST CORROSION AND MIC.
 - 8" SW-TO-EF X-CONNECT PIPING FROM OUTLET FLANGE OF TEE TO INLET OF XVCR3130-A/B IS COATED WITH PLASTICOOR TO ELIMINATE CORROSION AND MIC BUILD-UP.
 - XPS-0235 IS A 3/8" SST SPACER RING INSTALLED BY ECR-50695

RFN 10-012

THIS IS A NUCLEAR SAFETY RELATED DOCUMENT. NO DEVIATION SHALL BE INITIATED OR PERFORMED WITHOUT PRIOR DOCUMENTATION AND WRITTEN APPROVAL.

FSAR FIGURE 9.2-2 SH.3

SOUTH CAROLINA ELECTRIC & GAS COMPANY
 VIRGIL C. SUMNER NUCLEAR STATION
 PIPING SYSTEM FLOW DIAGRAM
 SERVICE WATER COOLING
 B - TRAIN OUTSIDE RB

DESIGN ENGINEERING
 MADE CHECKED
 JNC PAH MGC

DATE: 9-13-10
 D-302-222 3 1
 DRAWING NUMBER SHEET NUMBER

PENDING/HOLD CHG
 Use with reference to ECR: 50585A
 DATE: 9-13-10
 INITIALS: CVT

NO.	DATE	BY	REVISION	CHK. BY	APPROVAL
1	4/30/11	RHM	REVISED PER ECR-50695	MGR	WTW
0	10/09	JNC	REVISED PER ECR-71215	PAH	MGC

ESSENTIAL