



# Organizational Chart Colorado State Government

## Legislative Branch

Senate  
House of Representatives  
Legislative Council  
Legislative Legal Services  
Office of the State Auditor  
Joint Budget Committee

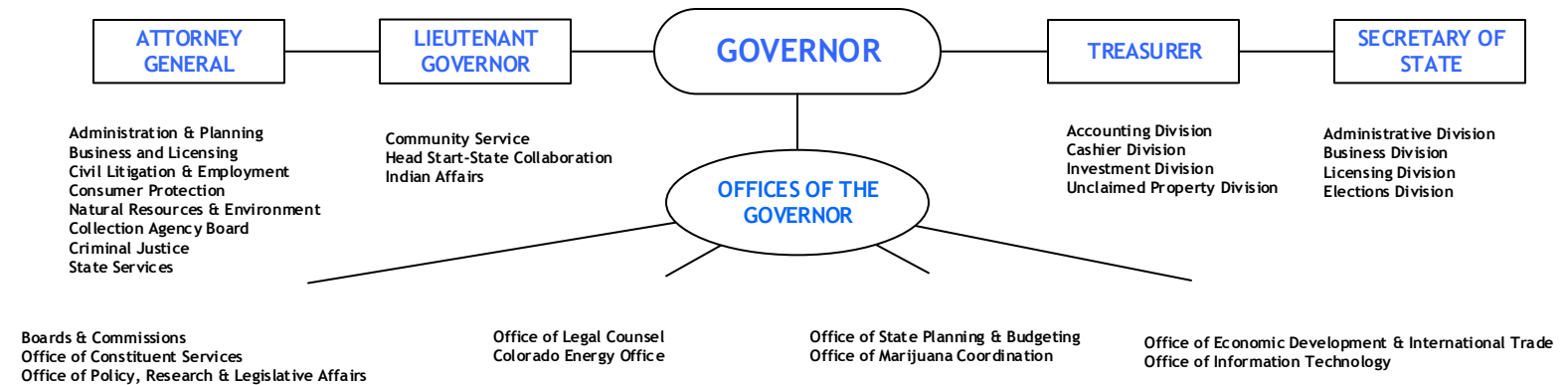
## Executive Branch

Governor's Office  
Lieutenant Governor's Office  
Treasurer's Office  
Attorney General's Office  
Secretary of State's Office

## Judicial Branch

Colorado State Supreme Court  
Colorado State Court of Appeals  
State Court Administrator's Office  
State District & County Trial Courts  
State Probation Services

## Elected Offices



## Agencies Managed by Governor Appointed Executives

### Department of Agriculture

- Colorado State Fair
- Division of Animal Health
- Division of Brand Inspection
- Division of Conservation Services
- Division of Inspection & Consumer Services
- Division of Markets
- Division of Plant Industry

### Department of Corrections

- Correctional Facilities/center
- Criminal Investigations/Professional Standards
- Division of Administration
- Division of Adult Parole & Community Corrections
- Division of Correctional Industries
- Division of Prisons
- Division of Public Affairs
- State Board of Parole
- Youthful Offender System

### Department of Health Care Policy and Financing

- Agency Administration & Operations
- Client & Community Relations
- Medicaid & CHP+ Program Administration

### Department of Human Services

- Office of Adult Disability & Rehabilitation Services
- Office of Behavioral Health & Housing
- Office of Children, Youth & Family Service
- Office of County Relations
- Office of Financial Services
- Office of Operations
- Office of Performance Improvement
- Office of Self Sufficiency
- Office of State & Veterans Nursing Homes

### Department of Labor & Employment

- Division of Employment & Training
- Division of Labor
- Division of Workers' Compensation
- Division of Oil & Public Safety
- Industrial Claim Appeals Office

### Department of Local Affairs

- Board of Assessment Appeals
- Division of Housing
- Division of Local Government
- Division of Property Taxation

### Department of Military & Veterans Affairs

- Division of National Guard
- Division of Civil Air Patrol
- Division of Veterans Affairs

### Department of Natural Resources

- Board of Land Commissioners
- Colorado Parks and Wildlife
- Division of Forestry
- Division of Reclamation Mining & Safety
- Division of Water Resources
- Geological Survey
- Oil & Gas Conservation Commission
- Water Conservation Board

### Department of Personnel & Administration

- Division of Central Services
- Division of Finance & Procurement
- Division of Human Resources
- Office of Administrative Courts
- State Controller's Office
- State Personnel Board

### Department of Public Health & Environment

- Air Pollution Control Division
- Center for Health and Environmental Data
- Chief Medical Officer
- Disease Control & Environmental Epidemiology Division
- Environmental Health and Sustainability Division
- Hazardous Materials & Waste Management Division
- Health Facilities and Emergency Medical Services Division
- Laboratory Services Division
- Prevention Services Division
- Water Quality Control Division

### Department of Public Safety

- Colorado Bureau of Investigation
- Colorado Integrated Criminal Justice System
- Colorado School Safety Resource Center
- Colorado State Patrol
- Division of Criminal Justice
- Division of Fire Prevention and Control
- Division of Homeland Security and Emergency Management

### Department of Regulatory Agencies

- Division of Banking
- Division of Civil Rights
- Division of Financial Services
- Division of Insurance
- Division of Professions and Occupations
- Division of Real Estate
- Division of Securities
- Office of Consumer Counsel
- Public Utilities Commission

### Department of Revenue

- Division of Motor Vehicles
- Enforcement Division
- Lottery Division
- Taxation Division

### Department of Transportation

- Colorado Tolling Enterprise
- Division of Accounting & Finance
- Division of Aeronautics
- Division of Engineering & Maintenance
- Division of Human Resources & Administration
- Division of Transportation Development
- Office of Policy
- Office of Public Relations

### Department of Education\*

- State Board of Education
- Achievement and Strategy Division
- Accountability, Performance & Support Division
- Assessment Unit
- Communications Division
- Innovation, Choice & Engagement Division
- School Finance and Operations Division

### Department of Higher Education\*\*

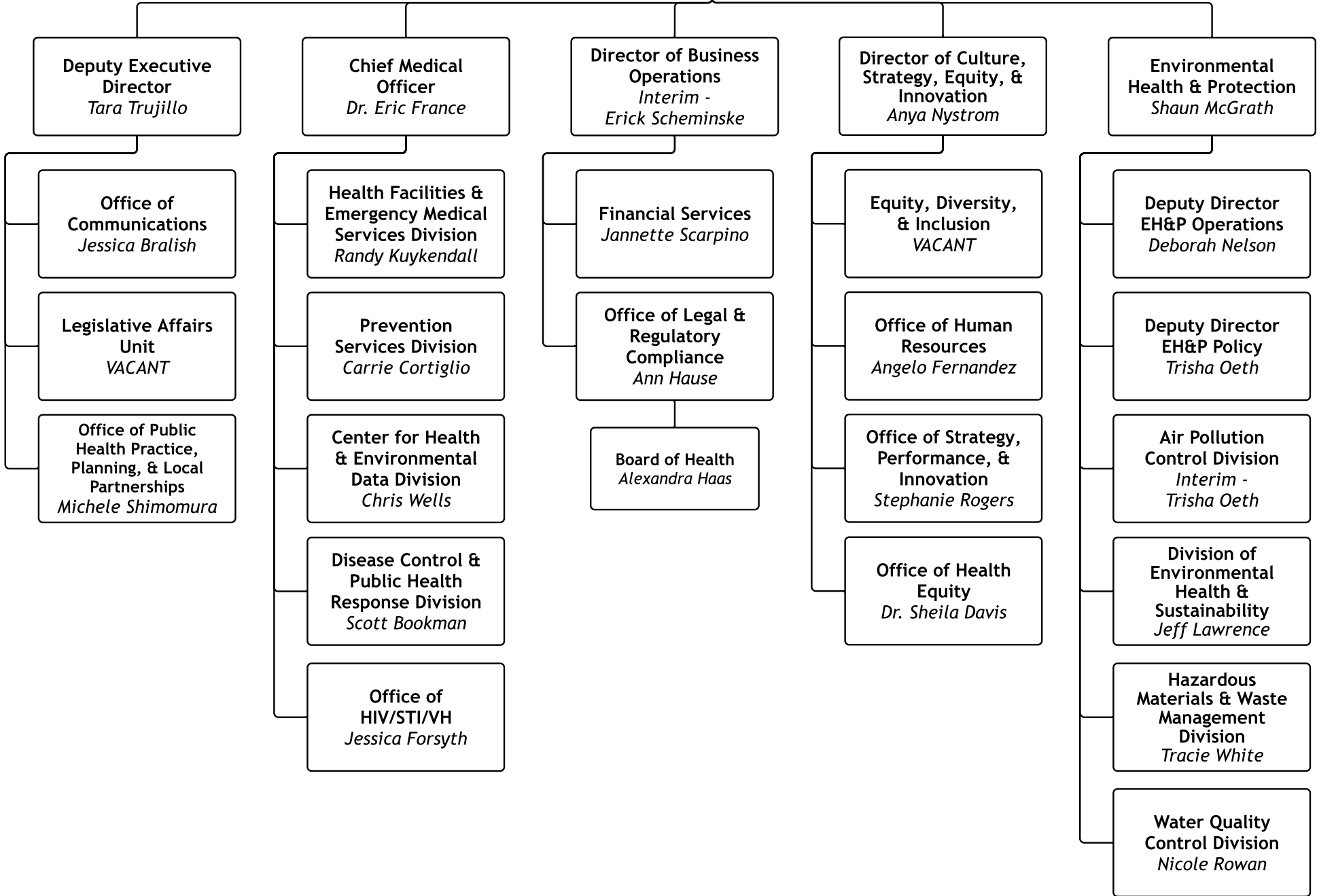
- College Assist., College Invest
- College in Colorado
- Colorado Commission on Higher Education
- Community Colleges
- Division of Private Occupational Schools
- Four-year Colleges
- GEAR UP
- Local District Colleges, Area Vocational Schools
- Research Universities
- State Historical Society (History Colorado)

\*NOTE: The Commissioner of Education is selected by the State Board of Education

\*\*Note: CDHE has coordinating authority for these institutions; each is governed by a separate board, with all community colleges under the State Board for Community Colleges & Occupational Education



**Executive Director**  
*Jill Hunsaker Ryan*





**Tracie White, Division Director #0332**  
**Hazardous Materials & Waste Management Division**  
 (org.2705)

Laura Dixon  
 Community Involvement Manager #2032  
 Lauren Errico #1914  
 Jeannine Natterman #2614  
 Shannon Bauman #2438  
 (org.2705)

**Brenda Berlin**  
 Admin Program Manager #2558  
 (org.2710)

**Doug Knappe**  
 Hazardous Waste Program Manager #1922  
 (org.2805)

**David Snapp**  
 SW/Materials Mgmt Program Mgr #1682  
 (org.2830)

**Jennifer Talbert**  
 Remediation Program Manager #2174  
 (org.2900)

**Jim Grice**  
 Rad Control Program Manager #1717  
 (org.3200)

**Caitlin Tiehen # 2149**

**Mary Ortiz**  
 Business Process/ Info Services  
 #1701

**Laura Gurule #1155**  
**Kris Figur**  
 Unit Leader #2557  
 HW Compliance Assurance  
 (org.2850)

**Justin Laboe #1889**  
**Wolf Kray**  
 Unit Leader #1744  
 Materials Management

**Vacant**  
 Unit Leader #1847  
 FF Remediation & Restoration  
 (org.2920)

**Phillip Peterson**  
 Unit Leader #2417  
 Radioactive Materials  
 (org. 3220)

- IT Application Managers
- Robert Bruce #2107
  - Nicholas Luedde #1970
  - Chase Martinez #2687
  - Scott Schroeder #2571

- OIT Liaison:
- Levin Worker#1664

- David Foster #2363
- Dan Goetz #2561
- Kendall Griffin #1785
- Susan Guiet #2158
- Amy Williams #1741
- Rachel Lemmons #1852

- Shana Baker #2572
- Michael Bankoff # #1567
- Brian Gaboriau #0824
- Lisa Jeffrey #1747
- Vacant #0891
- Jace Driver #1568
- Anna Maylett #0901
- Cindy Smith #2682

- Rachel Blomberg #0133
- Mark Collar #2497
- Melody Mascarenaz #2616
- Susan Newton #2690
- Lee Pivonka #1944
- Jeff Swanson #2591
- Olivia Salmon #2446

- Derek Bailey #0741
- Meghan Cromie #0417
- Heather Gilbert #0903
- Matthew Gift #2530
- Will Hageman #1284
- Ramon Li #2170
- Kathryn Mote #2109
- Carrie Romanek #0686
- Timothy Thorvaldson #1080

**Tanya Gray**  
 Financial Assurance  
 #1655

**Robert Beierle**  
 Unit Leader #1759  
 HW Corrective Action  
 (org.2860)

**Ed Smith**  
 Unit Leader #2643  
 SW Compliance Assurance

**Doug Jamison**  
 Unit Leader #1844  
 Superfund / Brownfields  
 (org.2910)

**Christine Kelley**  
 Radon Grants #2390  
 (org.3210)

**Eric Brown**  
 GIS & ArcSDE  
 #0288

- Lindsay Archibald #2595
- Robert Adams #2387
- Lindsay Murl Masters #2163
- Rick Mruz #2569
- David Walker #2274
- Vacant EPS I 1043

- Doug Ikenberry #0027
- Caren Johannes #0573
- Brian Long #0696
- John O' Rourke #1546 (GJ)
- Randy Perila #1536
- Joe Pieterick #2373
- Jennifer Reynolds #0031

- Fonda Apostolopoulos #2395
- Ross Davis #1679
- Mark Rudolph #2024
- Sarah Graves #2601

**James Jarvis**  
 Special Projects #1128  
 (org.3210)

**Charity Sais**  
 HR & Medical Monitoring  
 Personnel Liaison  
 #2551

**Kevin Mackey**  
 Unit Leader #0244  
 HW Permitting  
 (org.2810)

**Jill Parisi**  
 Unit Leader #0569  
 SW Engineering Unit

**Colleen Brisnehan**  
 Unit Leader #2322  
 Superfund / Site Assessment  
 (org.2940)

**Vacant (GJ)**  
 TENORM #0270  
 (Org. )

- Jessica Hubbard**  
 Fiscal Unit Manager  
 #2327
- Kevin Fisher # 2596
  - Philip Kistler #2564
  - Jaqui Maharaj #2115
  - Richard Scheneman #1992

- James Hindman #2645
- Julianna Mahr #2599
- Robert Nabors #2615
- Marian O'Connor #2562
- Randy Perlis #0609
- Creation PE I #0000

- Sarah Foreman #2666
- Kira Gillette #1461
- Paul Schlicht #2660
- Vacant #2375
- Andy Todd #1462 - PT
- Vacant #2365

- Mary Boardman #2212
- Alex Hedgepath #2350
- Dustin McNeil #1819
- Kyle Sandor #2196

**Shiya Wang**  
 Uranium #0509  
 (Org. 3220)

**Kay Dirling**  
 Records Manager  
 #2207

**Jerry Henderson**  
 Unit Leader #0694  
 SW Permitting GW & Environmental  
 Unit

**UMTRA**  
 Grand Junction Office  
 (2942)

**Katherine Liberman**  
 X- Ray Certification #2269  
 (org.3210)

- Rainbow Apodaca #2294
- Pearl Campos #2565
- Robb Farquhar # 2007
- Kim Long #1890
- Marina Ber # 2636 (TL) 9/4/22

- Ashley Lawrence #2293 (GJ)
- Ed Pottorff #2376
- Taylor Pierce #1547
- Monte Stroud #2285

- Michael Cosby #1810
- Latisha Manchester #1346

- Zhivonne Armstrong #1528
- Kristina Cole #2496
- Nathalia Collins - Matthews #5226- TL 9/30/22
- Karen George#1898
- Maria Manchego #5227
- Nadine McClenathan #0284