

- CATEGORY II**
- GENERAL NOTES**
1. ALL WORK ON THIS DRAWING SHALL BE IN ACCORDANCE WITH THE SPECIFICATIONS NOTED HEREON.
 2. ALL WORK SHALL BE DONE IN ACCORDANCE WITH THE SPECIFICATIONS NOTED HEREON.
 3. INDICATED DIRECTIONS OF GRADE SHALL BE MAINTAINED UNLESS OTHERWISE NOTED.
 4. ALL DIPS SHALL BE MAINTAINED UNLESS OTHERWISE NOTED.
 5. ALL DIPS SHALL BE MAINTAINED UNLESS OTHERWISE NOTED.
 6. ALL DIPS SHALL BE MAINTAINED UNLESS OTHERWISE NOTED.
 7. ALL DIPS SHALL BE MAINTAINED UNLESS OTHERWISE NOTED.
 8. ALL DIPS SHALL BE MAINTAINED UNLESS OTHERWISE NOTED.
 9. ALL DIPS SHALL BE MAINTAINED UNLESS OTHERWISE NOTED.
 10. ALL DIPS SHALL BE MAINTAINED UNLESS OTHERWISE NOTED.

- REFERENCE DRAWINGS**
- S-171 GRADE PLAN - PLANT AREA
 - S-172 GRADE PLAN - PLANT AREA
 - S-173 GRADE PLAN - PLANT AREA
 - S-174 GRADE PLAN - PLANT AREA
 - S-175 GRADE PLAN - PLANT AREA
 - S-176 GRADE PLAN - PLANT AREA
 - S-177 GRADE PLAN - PLANT AREA
 - S-178 GRADE PLAN - PLANT AREA
 - S-179 GRADE PLAN - PLANT AREA
 - S-180 GRADE PLAN - PLANT AREA

USAR FIG. 2.4-3-2

DESIGNED BY	DATE	SCALE	PROJECT NO.
DRAWN BY	DATE	SCALE	PROJECT NO.
CHECKED BY	DATE	SCALE	PROJECT NO.
APPROVED BY	DATE	SCALE	PROJECT NO.
GRADING PLAN SWITCHYARD AREA			
S-0172			08

MANHOLE SCHEDULE

Table with columns: NO., INV. EL., TOP EL., NORTH COORD., EAST COORD., DIA., TYPE, REMARKS. Contains data for manholes 1 through 79.

MANHOLE SCHEDULE (CONT.)

Table with columns: NO., INV. EL., TOP EL., NORTH COORD., EAST COORD., DIA., TYPE, REMARKS. Contains data for manholes 80 through 257.

MANHOLE SCHEDULE (CONT.)

Table with columns: NO., INV. EL., TOP EL., NORTH COORD., EAST COORD., DIA., TYPE, REMARKS. Contains data for manholes 258 through 425.

NOTES

- 1. FOR GENERAL NOTES SEE DRAWING S-112.
2. ALL WORK SHOWN ON THIS DRAWING SHALL BE IN ACCORDANCE WITH THE CITY OF LOS ANGELES STANDARD SPECIFICATIONS FOR PUBLIC WORKS, LATEST EDITION.
3. FOR DETAILS OF MANHOLES SEE DRAWINGS S-187, S-191 & S-256.
4. ALL MANHOLE COVERS SHALL BE GRATED UNLESS NOTED ON DRAWING.
5. GRADE TYPE FOR UNLESS NOTED OTHERWISE SHALL BE "A".
6. FOR RAINSTAIN MANHOLE COVERS SEE DWG. HC-C0012.
7. FOR SECURITY CHAIR POINTS SEE DWG. HC-C0012.
8. FOR JERSEY BARRIERS OVER MANHOLES, SEE DWG. HC-C0021.

LEGEND

- CD TRANSFORMER WALL DRAIN ON DIRT WASTE
D ROOF DRAIN
MANHOLE COVERS SHALL BE PROVIDED WITH BOLT DOWN TO BE DONE IN ACCORDANCE WITH JOB SPECIFICATION A-3899.

REFERENCE DRAWINGS

- A-0201 SHIT, 1 SANITARY SEWER AND POTABLE WATER SYSTEM
A-0202 SHIT, 1 SANITARY SEWER AND POTABLE WATER SYSTEM
S-0172 GROUND PLAN - SW TOWARD AREA
S-0173 GROUND PLAN - NW TOWARD AREA
S-0187 DRAINAGE DETAILS PLANT AREA
S-0192 ANNUAL AND PRE-DETAILS PLANT AREA
S-0193 INTERFERE, LOT - ROOF DRAIN, FERN, VALVE
S-0194 INTERFERE, LOT - ROOF DRAIN, FERN, VALVE
S-0202 DETAIL 1 MANHOLE, GRADING
S-0203 DETAIL 2 MANHOLE, GRADING
S-0204 DETAIL 3 MANHOLE, GRADING
S-0205 DETAIL 4 MANHOLE, GRADING
S-0206 DETAIL 5 MANHOLE, GRADING
S-0207 DETAIL 6 MANHOLE, GRADING
S-0208 DETAIL 7 MANHOLE, GRADING
S-0209 DETAIL 8 MANHOLE, GRADING
S-0210 DETAIL 9 MANHOLE, GRADING
S-0211 DETAIL 10 MANHOLE, GRADING
S-0212 DETAIL 11 MANHOLE, GRADING
S-0213 DETAIL 12 MANHOLE, GRADING
S-0214 DETAIL 13 MANHOLE, GRADING
S-0215 DETAIL 14 MANHOLE, GRADING
S-0216 DETAIL 15 MANHOLE, GRADING
S-0217 DETAIL 16 MANHOLE, GRADING
S-0218 DETAIL 17 MANHOLE, GRADING
S-0219 DETAIL 18 MANHOLE, GRADING
S-0220 DETAIL 19 MANHOLE, GRADING
S-0221 DETAIL 20 MANHOLE, GRADING
S-0222 DETAIL 21 MANHOLE, GRADING
S-0223 DETAIL 22 MANHOLE, GRADING
S-0224 DETAIL 23 MANHOLE, GRADING
S-0225 DETAIL 24 MANHOLE, GRADING
S-0226 DETAIL 25 MANHOLE, GRADING
S-0227 DETAIL 26 MANHOLE, GRADING
S-0228 DETAIL 27 MANHOLE, GRADING
S-0229 DETAIL 28 MANHOLE, GRADING
S-0230 DETAIL 29 MANHOLE, GRADING
S-0231 DETAIL 30 MANHOLE, GRADING
S-0232 DETAIL 31 MANHOLE, GRADING
S-0233 DETAIL 32 MANHOLE, GRADING
S-0234 DETAIL 33 MANHOLE, GRADING
S-0235 DETAIL 34 MANHOLE, GRADING
S-0236 DETAIL 35 MANHOLE, GRADING
S-0237 DETAIL 36 MANHOLE, GRADING
S-0238 DETAIL 37 MANHOLE, GRADING
S-0239 DETAIL 38 MANHOLE, GRADING
S-0240 DETAIL 39 MANHOLE, GRADING
S-0241 DETAIL 40 MANHOLE, GRADING
S-0242 DETAIL 41 MANHOLE, GRADING
S-0243 DETAIL 42 MANHOLE, GRADING
S-0244 DETAIL 43 MANHOLE, GRADING
S-0245 DETAIL 44 MANHOLE, GRADING
S-0246 DETAIL 45 MANHOLE, GRADING
S-0247 DETAIL 46 MANHOLE, GRADING
S-0248 DETAIL 47 MANHOLE, GRADING
S-0249 DETAIL 48 MANHOLE, GRADING
S-0250 DETAIL 49 MANHOLE, GRADING
S-0251 DETAIL 50 MANHOLE, GRADING
S-0252 DETAIL 51 MANHOLE, GRADING
S-0253 DETAIL 52 MANHOLE, GRADING
S-0254 DETAIL 53 MANHOLE, GRADING
S-0255 DETAIL 54 MANHOLE, GRADING
S-0256 DETAIL 55 MANHOLE, GRADING
S-0257 DETAIL 56 MANHOLE, GRADING
S-0258 DETAIL 57 MANHOLE, GRADING
S-0259 DETAIL 58 MANHOLE, GRADING
S-0260 DETAIL 59 MANHOLE, GRADING
S-0261 DETAIL 60 MANHOLE, GRADING
S-0262 DETAIL 61 MANHOLE, GRADING
S-0263 DETAIL 62 MANHOLE, GRADING
S-0264 DETAIL 63 MANHOLE, GRADING
S-0265 DETAIL 64 MANHOLE, GRADING
S-0266 DETAIL 65 MANHOLE, GRADING
S-0267 DETAIL 66 MANHOLE, GRADING
S-0268 DETAIL 67 MANHOLE, GRADING
S-0269 DETAIL 68 MANHOLE, GRADING
S-0270 DETAIL 69 MANHOLE, GRADING
S-0271 DETAIL 70 MANHOLE, GRADING
S-0272 DETAIL 71 MANHOLE, GRADING
S-0273 DETAIL 72 MANHOLE, GRADING
S-0274 DETAIL 73 MANHOLE, GRADING
S-0275 DETAIL 74 MANHOLE, GRADING
S-0276 DETAIL 75 MANHOLE, GRADING
S-0277 DETAIL 76 MANHOLE, GRADING
S-0278 DETAIL 77 MANHOLE, GRADING
S-0279 DETAIL 78 MANHOLE, GRADING
S-0280 DETAIL 79 MANHOLE, GRADING
S-0281 DETAIL 80 MANHOLE, GRADING
S-0282 DETAIL 81 MANHOLE, GRADING
S-0283 DETAIL 82 MANHOLE, GRADING
S-0284 DETAIL 83 MANHOLE, GRADING
S-0285 DETAIL 84 MANHOLE, GRADING
S-0286 DETAIL 85 MANHOLE, GRADING
S-0287 DETAIL 86 MANHOLE, GRADING
S-0288 DETAIL 87 MANHOLE, GRADING
S-0289 DETAIL 88 MANHOLE, GRADING
S-0290 DETAIL 89 MANHOLE, GRADING
S-0291 DETAIL 90 MANHOLE, GRADING
S-0292 DETAIL 91 MANHOLE, GRADING
S-0293 DETAIL 92 MANHOLE, GRADING
S-0294 DETAIL 93 MANHOLE, GRADING
S-0295 DETAIL 94 MANHOLE, GRADING
S-0296 DETAIL 95 MANHOLE, GRADING
S-0297 DETAIL 96 MANHOLE, GRADING
S-0298 DETAIL 97 MANHOLE, GRADING
S-0299 DETAIL 98 MANHOLE, GRADING
S-0300 DETAIL 99 MANHOLE, GRADING
S-0301 DETAIL 100 MANHOLE, GRADING

USAR FIG. 2.4-3-4A
MANHOLE, PIPE & CULVERT SCHEDULE
ELECTRONIC APPROVAL
DATE: 10/14/2021
SCALE: AS SHOWN

MANHOLE SCHEDULE (CONT.)

Table with columns: NO., INV. EL., TOP EL., LOCATION (NORTH CORP., EAST CORP.), DIA., TYPE, REMARKS. Contains rows 227-254.

MANHOLE SCHEDULE (CONT.)

Table with columns: NO., INV. EL., TOP EL., LOCATION (NORTH CORP., EAST CORP.), DIA., TYPE, REMARKS. Contains rows 255-285.

* CW VENT MANHOLE SCHEDULE

Table with columns: NO., TOP/FUN ELEV., TOP/VA. H. ELEV., LOCATION (NORTH CORP., EAST CORP.), DIA., TYPE, REMARKS. Contains rows CW-1 to CW-5.

SANITARY SEWER MANHOLE SCHEDULE

Table with columns: NO., INV. EL., TOP EL., LOCATION (NORTH CORP., EAST CORP.), DIA., TYPE, REMARKS. Contains rows 1-36.

VALVE VAULT MANHOLE SCHEDULE

Table with columns: NO., TOP/FUN ELEV., TOP/VA. H. ELEV., LOCATION (NORTH CORP., EAST CORP.), DIA., TYPE, REMARKS. Contains rows VV-1 to VV-2.

NOTES

- 1. SEE NOTES ON DRAWING S-189 SHIT. 1.
2. ALL SEWER TREATMENT MANHOLES SHALL BE PLUMBED WITH...
3. CLOSED TOPS, NEARBY CHIMNEYS, LID TYPE, LID DIA.,...

LEGEND

- FOR LEGEND, SEE DRAWING S-0189 SHIT. 1.
A-0201 SHIT.1 SANITARY SEWER AND PORTABLE WATER SYSTEM
A-0202 SHIT.1 SANITARY SEWER AND PORTABLE WATER SYSTEM

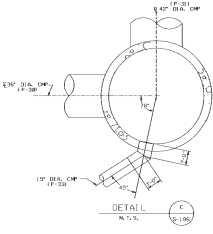
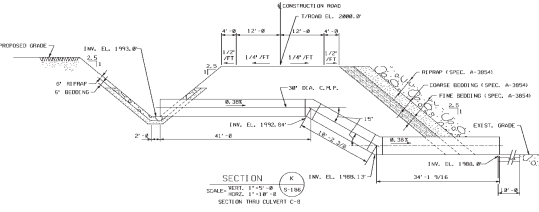
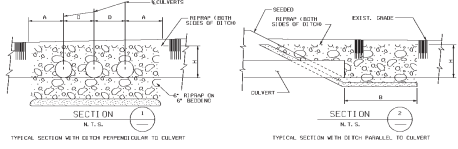
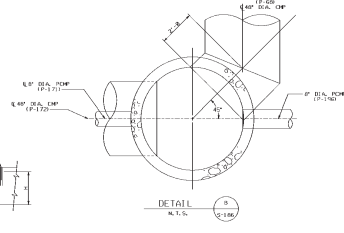
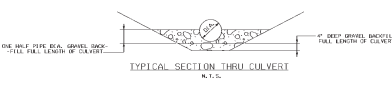
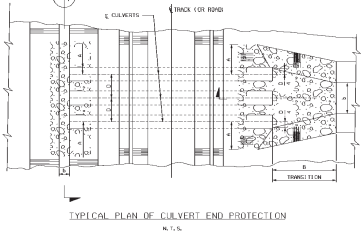
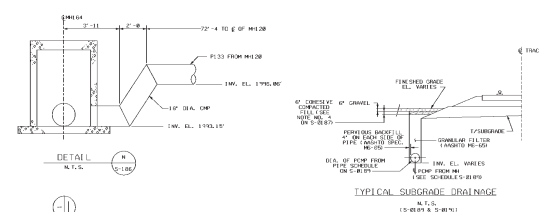
REFERENCE DRAWINGS

- A-0201 SHIT.1 SANITARY SEWER AND PORTABLE WATER SYSTEM
A-0202 SHIT.1 SANITARY SEWER AND PORTABLE WATER SYSTEM
A-0203 SHIT.1 SANITARY SEWER AND PORTABLE WATER SYSTEM

USAR FIG. 2.4-3-4B

Logos for USAR, CRREK, and ELECTRONIC APPROVAL. Includes drawing title 'MANHOLE, PIPE & CULVERT SCHEDULE' and sheet number 'S-0189'.

8 7 6 5 4 3 2 1



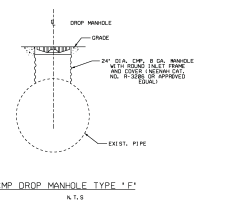
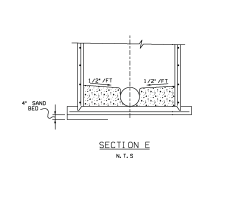
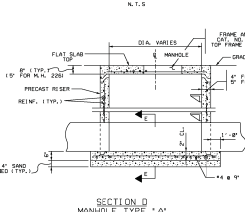
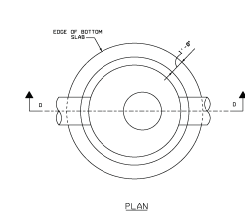
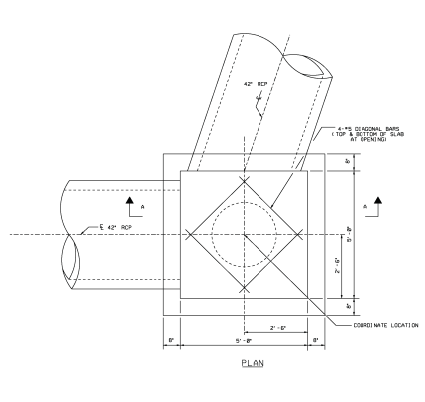
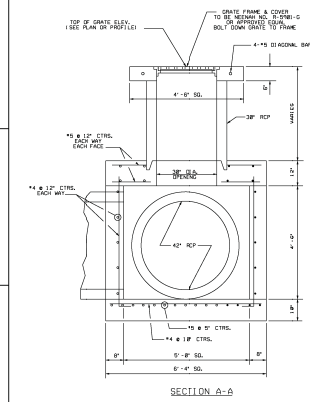
LEGEND	
10" DIA. PIPE	10" DIA. PIPE
1/2" BEDDING	1/2" BEDDING
1/2" BEDDING	1/2" BEDDING
1/2" BEDDING	1/2" BEDDING

GENERAL NOTES	
1.	FOR GENERAL NOTES SEE DRAWING S-172.
2.	ALL WORK SHOWN ON THIS DRAWING SHALL BE IN ACCORDANCE WITH THE SPECIFICATIONS FOR ROAD AND BRIDGE.

REFERENCE DRAWINGS	
S-172	DRAINAGE PLAN - SEE DRAINAGE AREA
S-173	DRAINAGE PLAN - PLANT AREA
S-174	DRAINAGE DETAILS - PLANT AREA
S-175	MANHOLE, PIPE, & CULVERT DETAILS
S-176	UTILITY DETAILS - SEE DRAWING TRANSFORMER
S-177	UTILITY DETAILS - SEE DRAWING TRANSFORMER

USAR P.C. 2.4-3-85	
DESIGNED BY	DRYDEN
CHECKED BY	DRYDEN
DATE	NOV 1984
REVISED FOR	REVISED FOR THE 2003-04AS
WOLF CREEK ELECTRONIC APPROVAL WOLF CREEK GENERATING STATION MANHOLE AND PIPE DETAILS AS SHOWN S-0191 SHEET NO. 26 OF 26	

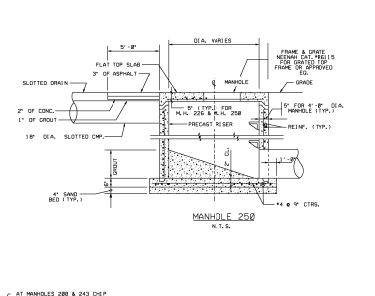
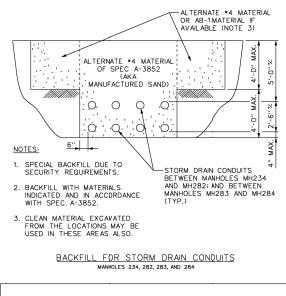
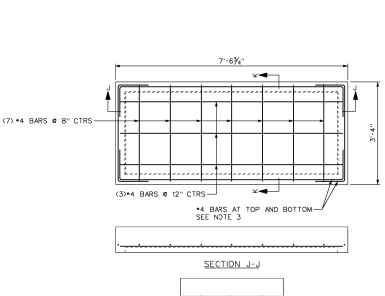
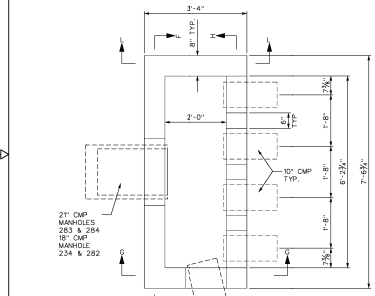
8 7 6 5 4 3 2 1



DETAIL 3
REINFORCED CONCRETE BOX
N.T.S.

SECTION B
MANHOLE TYPE 'A'
N.T.S.

CMP DROP MANHOLE TYPE 'F'
N.T.S.



BACKFILL FOR STORM DRAIN CONDUITS
MANHOLES 234, 283, 283 AND 284

MANHOLE 250
N.T.S.

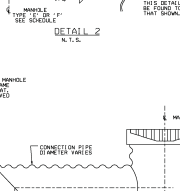
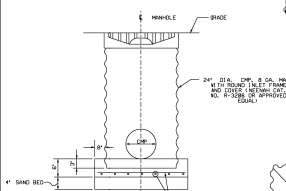
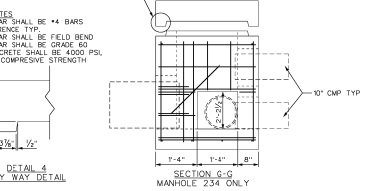
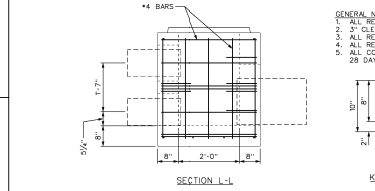
SECURITY SILENT DRAINAGE MANHOLE PLAN
MANHOLES 234, 283, 283, AND 284

SECTION K-K
MANHOLE VAULT
LID REINFORCEMENT PLAN

NOTES:
1. SPECIAL BACKFILL DUE TO SECURITY REQUIREMENTS.
2. BACKFILL WITH MATERIALS INDICATED AND IN ACCORDANCE WITH SPEC. A-3852.
3. CLEAN MATERIAL EXCAVATED FROM THE LOCATIONS MAY BE USED IN THESE AREAS ALSO.

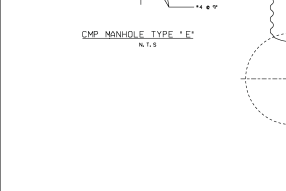
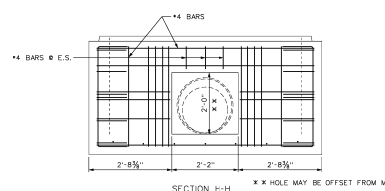
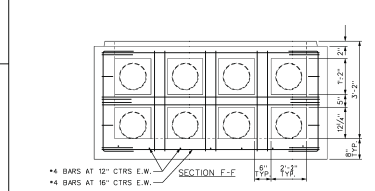
DETAIL 2
N.T.S.

NOTES:
1. FOR GENERAL NOTES & LEGEND SEE DRAWING S-0290.
2. USE THIS DRAWING IN CONJUNCTION WITH DRAWING S-0296 SHEET 2.



REFERENCE DRAWINGS

S-0290	PLANT AREA ROADWAY, GRADING & DRAINAGE PLAN SHEET 1
S-0293	PLANT AREA ROADWAY, GRADING & DRAINAGE PLAN SHEET 2
S-0294	MANHOLE AREA ROADWAY, GRADING & DRAINAGE PLAN SHEET 3
S-0297	PLANT AREA ROADWAY, GRADING & DRAINAGE PLAN SHEET 4
S-0298	DRAINAGE DETAILS & SECTIONS SHIT'S 1 & 3
S-0299	DRAINAGE PLAN PLANT AREA
S-0300	MANHOLE, PIPE & COLLECTOR SCHEDULE
S-0301	MANHOLE & PIPE DETAILS SHEET 2
S-0302	MANHOLE & PIPE DETAILS
S-0303	FOUNDATION PLAN WORK FOR FOUNDATION STRUCTURE 283 (A)
S-0304	GRADING PLAN WORK FOR FOUNDATION STRUCTURE 283 (A)



USAR FIG. 2.4-3-08A

REVISION	DESCRIPTION	DATE	BY
1	ISSUED FOR CONSTRUCTION	08/20/08	...

WOLF CREEK ELECTRONIC APPROVAL

MANHOLE AND PIPE DETAILS

DATE: 8-0296

SCALE: 1/2" = 1'-0"

THIS DRAWING AND THE DESIGN IT CONTAINS IS THE PROPERTY OF THE UTILITIES AND WATER DEPARTMENT OF THE COUNTY OF LOS ANGELES. IT IS LOANED TO THE BIDDING CONTRACTOR UNDER THE CONDITION THAT IT SHALL NOT BE REPRODUCED, COPIED, LOANED, REPRODUCED, OR USED IN ANY MANNER WITHOUT THE WRITTEN CONSENT OF THE UTILITIES AND WATER DEPARTMENT.



DESIGN DOCUMENT
CHANGE NOTICE

INITIATING DOC.
NCR/EER/FCR/CWR PER
NO. 4244-88-2

PMR NO. 02841
REV. 0

ASSIGNED DISCIPLINE: FACILITIES ENGINEERING	DDCN NO.	DOCUMENT NUMBER S-0297	REV. K	SEQ. NO. 01
---	----------	----------------------------------	------------------	-----------------------

OTHER DOCUMENTS AFFECTED BY THIS CHANGE:
S-0291

PAGE 1 OF 2

OTHER DDCN'S REQUIRED TO IMPLEMENT CHANGE:
DDCN S-0292-R-01

REASON FOR CHANGE:
AS BUILT INFORMATION

DESCRIPTION OF CHANGE: **SEE CLOUDED "AREA OF CHANGE" ON PAGE 2 OF THIS DDCN.**

REVIEWED WITHOUT COMMENTS

<u>W. Gary M...</u> FSE	<u>7-11-89</u> DATE	<u>Delbert S. Riobe</u> ESE	<u>7-11-89</u> DATE
<u>John A. Handberg</u> FE	<u>7-11-89</u> DATE	<u>Louis Schubert</u> OTHER	<u>7-11-89</u> DATE

RELEASE AS DDCN FOR REVISION

ASSIGNED ENG: <u>John A. Handberg</u>	DATE: <u>7-11-89</u>
CHECKED BY: <u>K. Parthasarathy</u>	DATE: <u>7-11-89</u>
APPROVED BY: <u>Mauna Singh</u>	DATE: <u>7-11-89</u>
DOCUMENT CONTROL RELEASE: <u>DC 31</u>	DATE: <u>8-18-89</u> MICROFILMED



DESIGN DOCUMENT
CHANGE NOTICE
CONTINUATION SHEET

INITIATING DOC.
NCR/EER/FCR/CWRYPER
NO. 4244-88-2

PMR NO. 02841
REV. 0

ASSIGNED DISCIPLINE:

FACILITIES ENGINEERING

DDCN NO.

DOCUMENT NUMBER

REV.

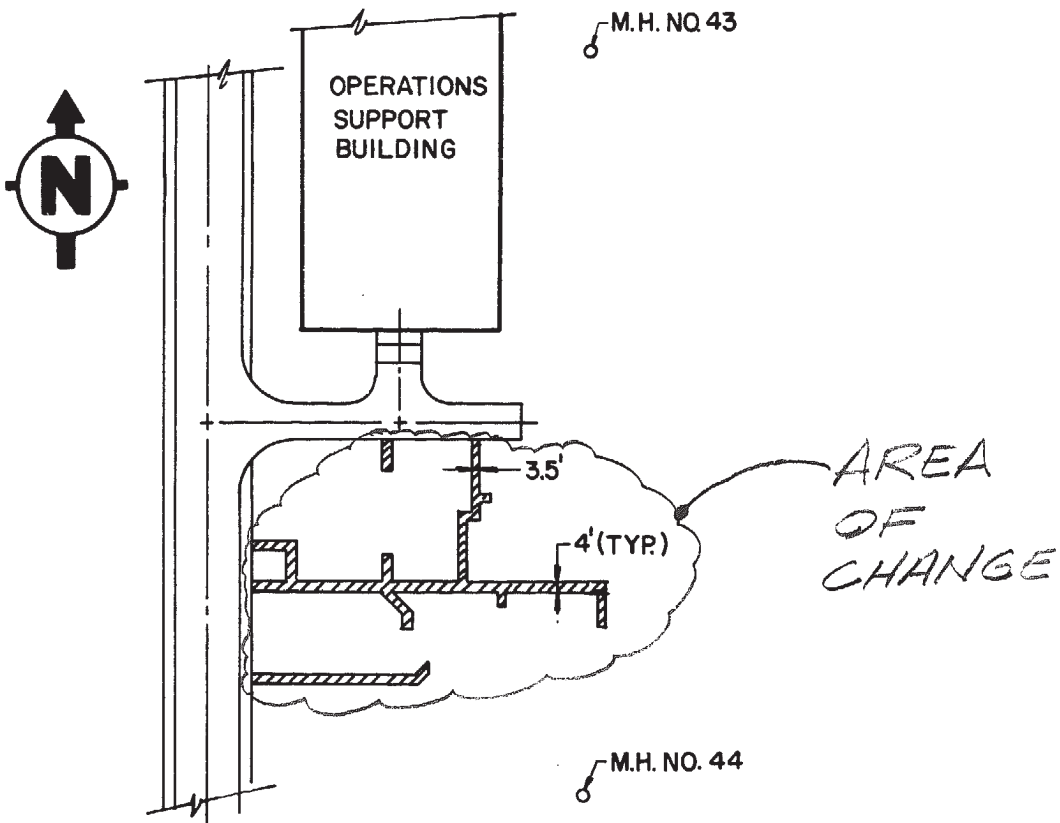
SEQ. NO.

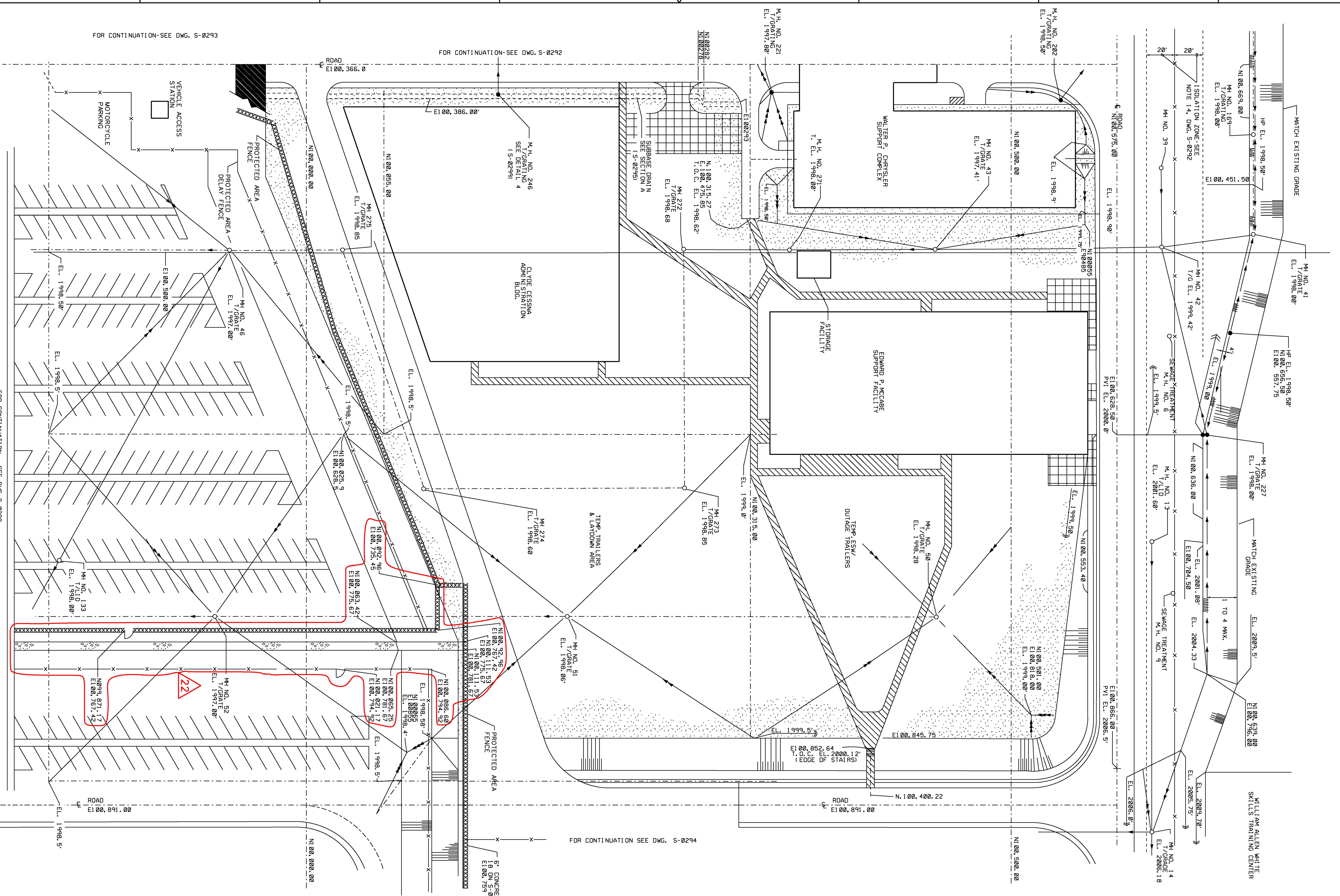
S-0297

K

01

PAGE 2 OF 2





FOR CONTINUATION SEE DWG. S-0294

FOR CONTINUATION-SEE DWG. S-0292

FOR CONTINUATION-SEE DWG. S-0293

NOTES

1. FOR GENERAL NOTES & LEGENDS, SEE DWG. S-0291 & S-292
2. SIDEWALK TO BE 5'-0" WIDE WITH A RADIUS OF 5'-0"
3. AT INTERSECTIONS.
4. SIDEWALKS TO START FROM BOTTOM OF TRAILER STEPS.
5. SIDEWALKS SHALL BE SLOPED TO FOLLOW ROCK (E. 1.0% & TO MAX. 1.0% ABOVE ROCK). ROCK SHALL BE LEveled TO MAX. 1.0% BELOW SIDEWALK. AT NO POINT SHALL SIDEWALK BE BELOW ROCK.
6. FOR TYP. SIDEWALK SECTION, EXPANSION & CONTROL JOINT DETAILS, SEE DWG. S-0295.
7. SIDEWALK TO HAVE BROOM FINISH.
8. DELETED
9. FOR COMPLETE BUILDING CONFIGURATIONS, SEE DRAWING SHEETS S-0292.

REFERENCE DRAWINGS

S-0291	FINISHED ROADWAY PLAN PLANT AREA
S-0292	PLANT AREA ROADWAY GRADING & DRAINAGE PLAN SH-1
S-0293	PLANT AREA ROADWAY GRADING & DRAINAGE PLAN SH-2
S-0294	AMENITY AREA ROADWAY GRADING & DRAINAGE PLAN SH-3
S-0295	PLANT AREA ROADWAY GRADING & DRAINAGE PLAN SH-5
S-0299	DRAINAGE DETAILS & SECTIONS SH-1 & 3

USAR FIG. 2.4-3-07

REVISED INCORPORATED
 THIS DRAWING IS THE PROPERTY OF THE U.S. ARMY CORP. OF ENGINEERS. IT IS TO BE KEPT IN THE OFFICE OF THE DISTRICT ENGINEER, WASH. DC. IT IS TO BE RETURNED TO THE DISTRICT ENGINEER, WASH. DC. UPON THE COMPLETION OF THE PROJECT.

Digitally signed
 by Stacey Graybeal
 Date: 2022.01.27 08:20:25 -0600



Linda Kaminski

WOLF CREEK
 CONSULTING ENGINEERS

PLANT AREA ROADWAY GRADING & DRAINAGE

SCALE: 1"=30'-0"

SHEET NO. 22