



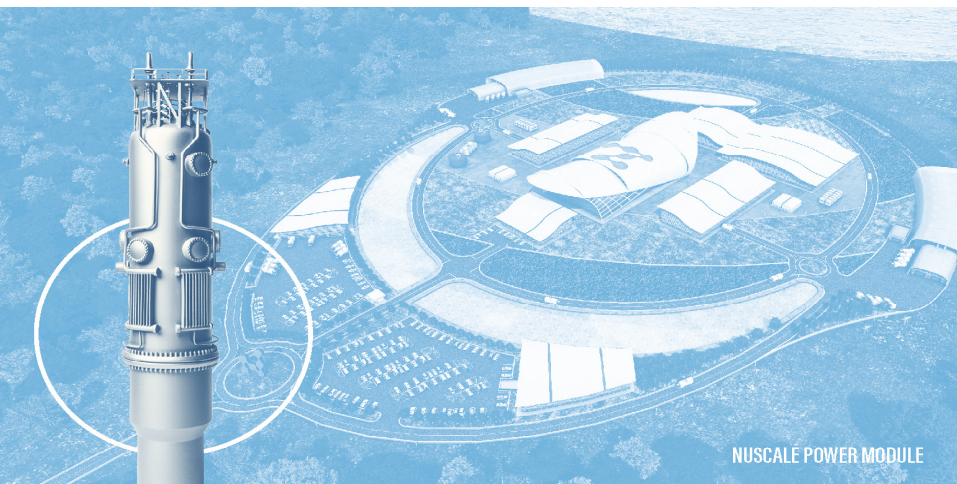
Office of  
**NUCLEAR ENERGY**

# Non-power and Advanced Reactors: Merging of Two Worlds

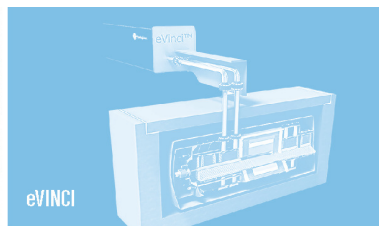
**Alison K Hahn**

**Office Director for Nuclear Reactor Deployment**

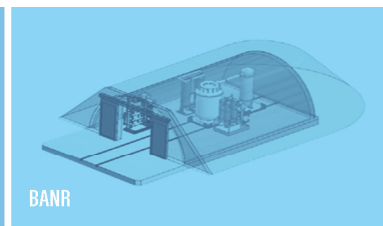
**Office of Nuclear Energy**



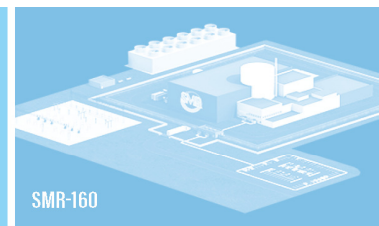
NUSCALE POWER MODULE



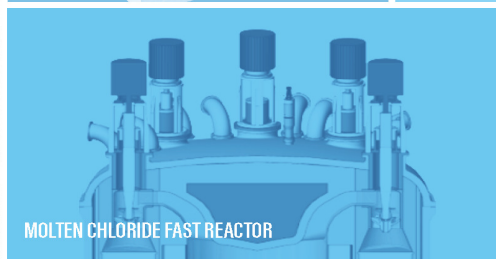
eVINCI



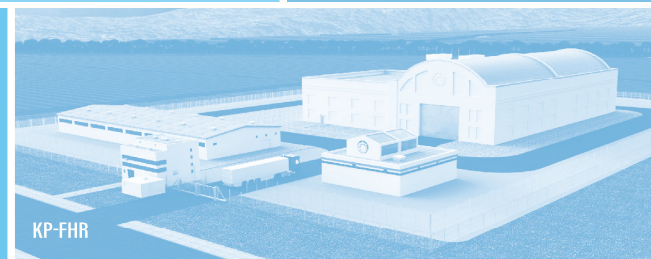
BANR



SMR-160



MOLTEN CHLORIDE FAST REACTOR



KP-FHR

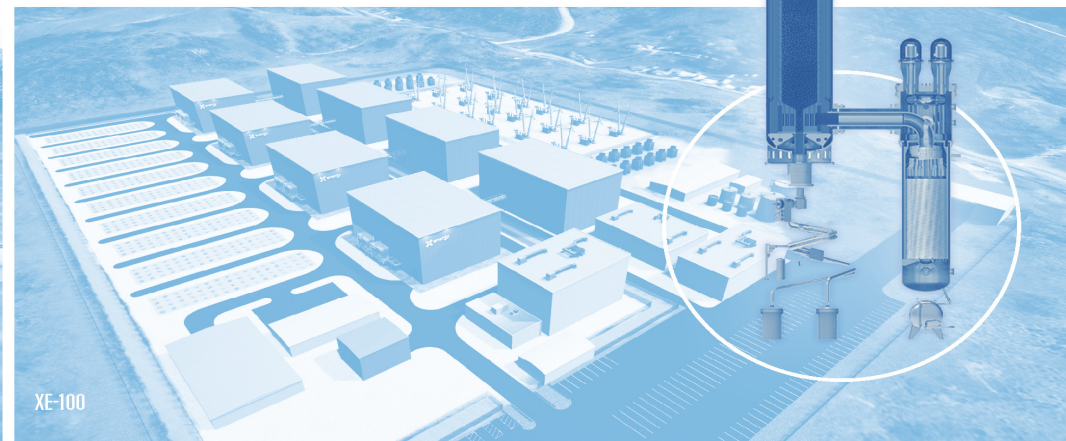
# ADVANCED NUCLEAR TECHNOLOGY

U.S. DEPARTMENT OF  
**ENERGY**

Office of  
**NUCLEAR ENERGY**



NATRIUM REACTOR



XE-100



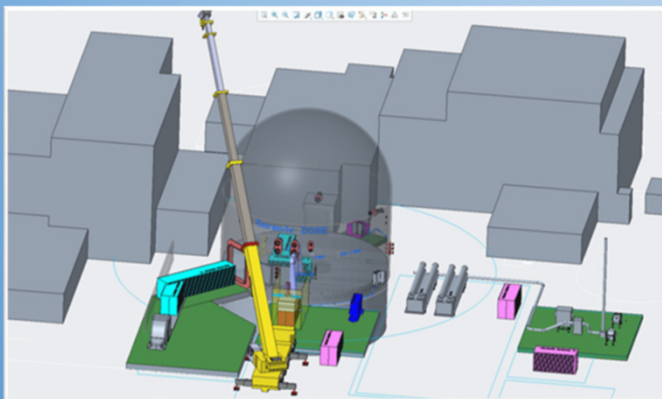
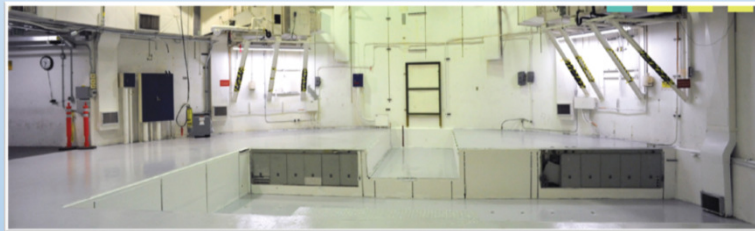
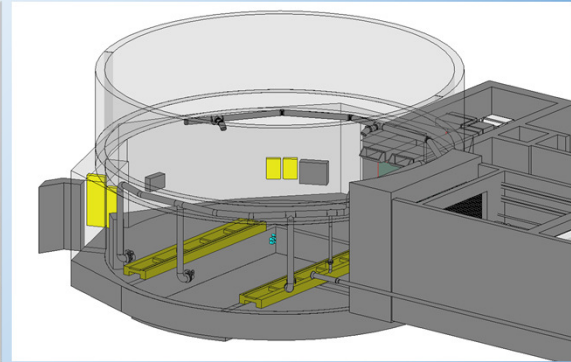
# National Reactor Innovation Center (NRIC)



Visit <https://nric.inl.gov>

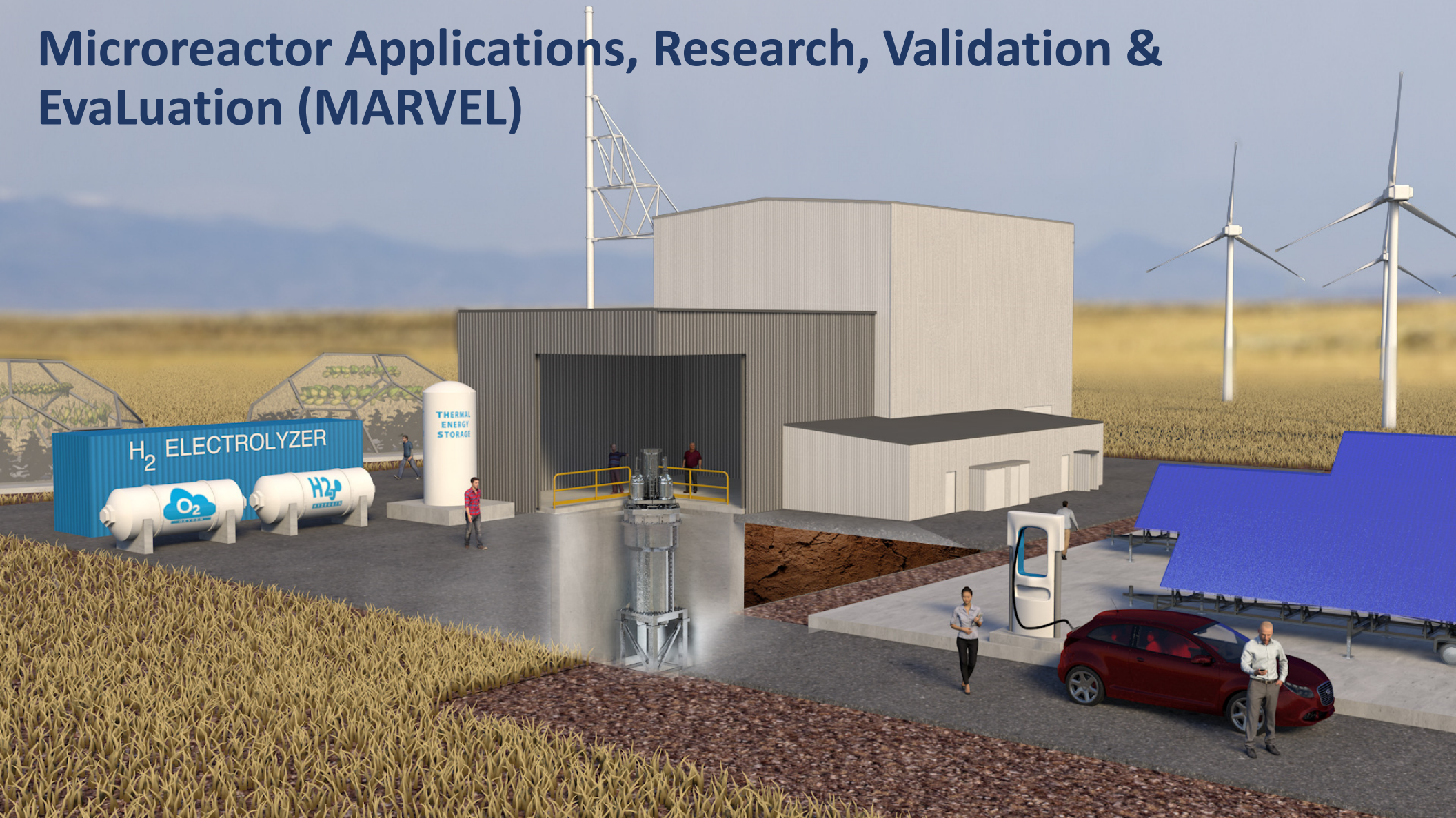


# Demonstration Test Beds In Development

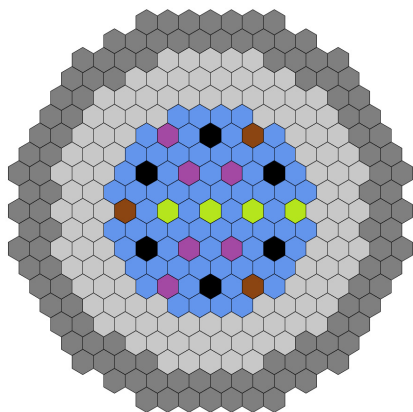
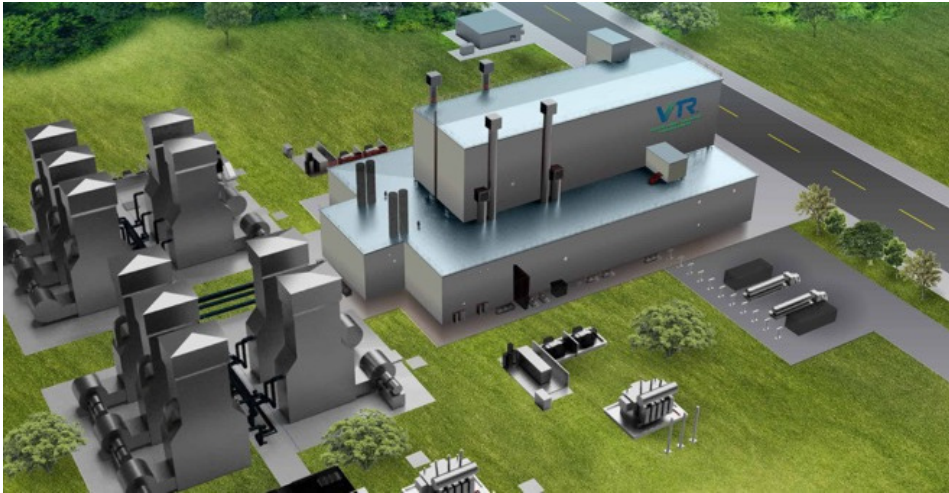




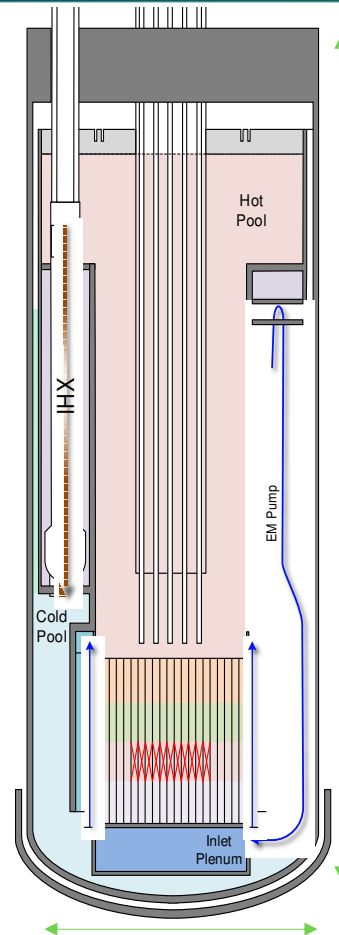
# Microreactor Applications, Research, Validation & Evaluation (MARVEL)



# Versatile Test Reactor

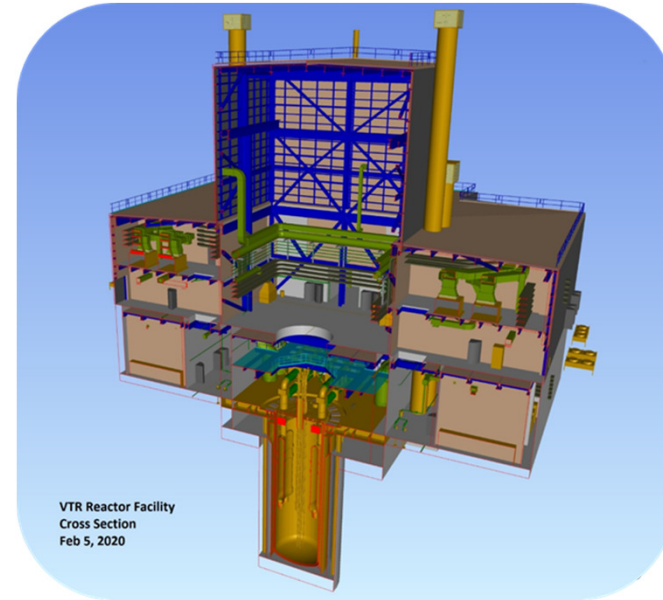


- Driver fuel (66)
- Control rod (6)
- Safety rod (3)
- Instrumented/Rabbit fixed test location (6)
- Example non-instrumented tests (4 shown)
- Reflector (114)
- Shield (114)



## VTR / PRISM Mod A

- Height: 62 ft
- Dia: 20 ft
- 300 MWth / 0 MWe
- DOE Licensed



U.S. DEPARTMENT OF  
**ENERGY**

*Office of*  
**NUCLEAR ENERGY**