

Small Drone Use at the Tuba City, Arizona Disposal Site for Aerial Survey



What is an aerial survey?”

An aerial survey is the collection of information with aircraft. While ground-based surveyors generally carry equipment to take photos, measure elevations, or collect other information, aerial surveying involves using equipment on aircraft to survey. In this case DOE will be using a drone to survey.

What is a small drone?

A small drone, in this case, about the size of an office chair, is an aircraft flown by a person on the ground using a hand-held control box. This person is a drone pilot.

Why will the U.S. Department of Energy (DOE) fly a small drone?

The drone has equipment that captures high-quality images. These images of the Tuba City, Arizona Disposal Site will help DOE ensure that the site stays in good condition.

Who will make sure it is safely flown?

The drone pilot and our safety expert. The pilot must follow federal rules to protect people and property on the ground.

Where will it be flown?

We will only fly over the DOE Tuba City, Arizona Disposal Site and surrounding area that is outlined in blue on the map, on the back of this sheet.

When will it be flown?

We plan to fly the drone the week of April 17th, 2022

How will your privacy be respected?

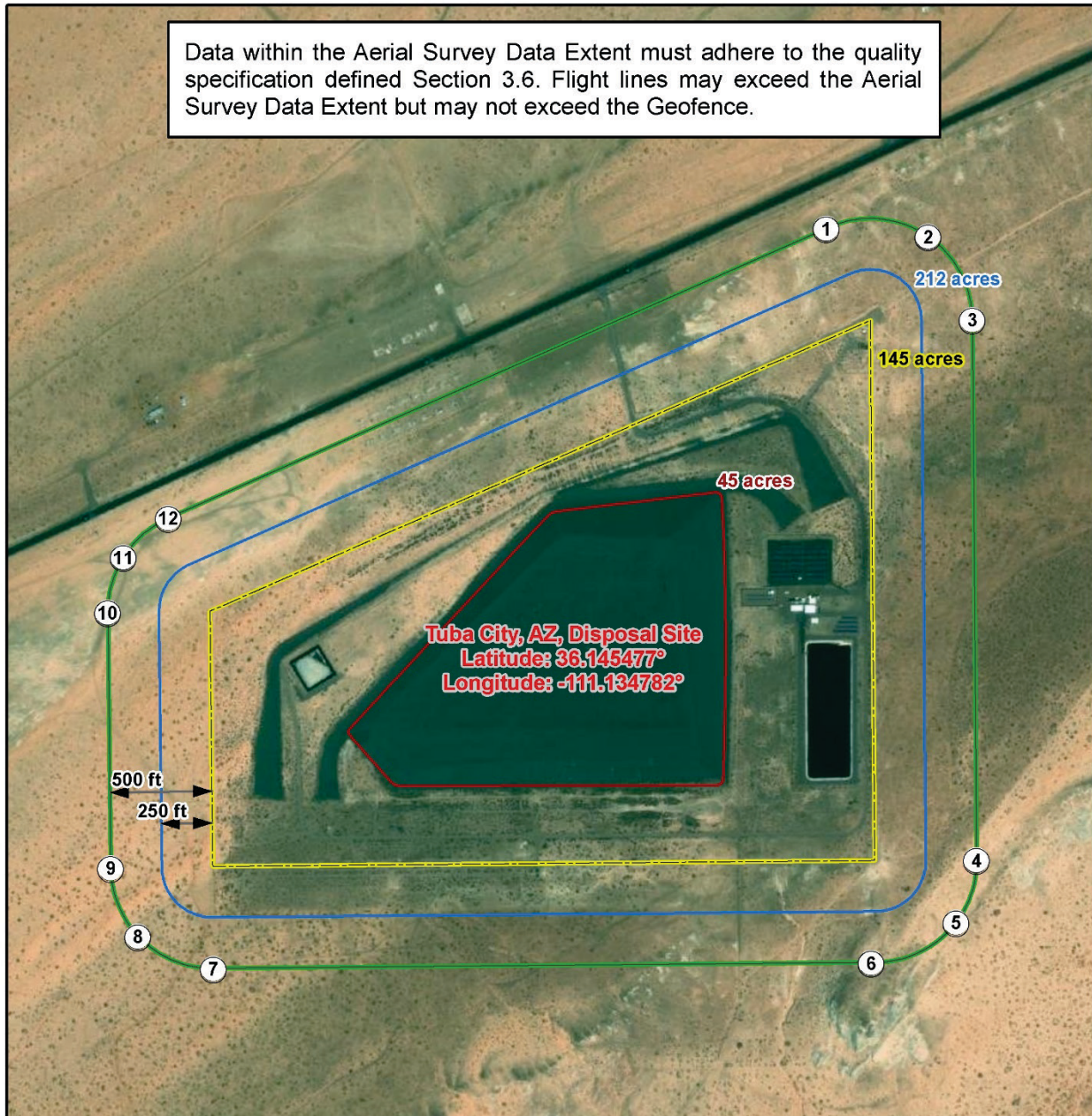
DOE has a very strict privacy rule that the drone pilot must follow. The pilot will collect imagery of the disposal site only, and not include photos of individuals or adjacent properties.

Who can you contact for more information?

Please contact the LM Aviation Manager Deborah Steckley @ (720) 648-3799, or Deborah.Steckley@lm.doe.gov and ask about the Tuba City, Arizona, Disposal Site aerial survey.

Aerial Survey Extent

Data within the Aerial Survey Data Extent must adhere to the quality specification defined Section 3.6. Flight lines may exceed the Aerial Survey Data Extent but may not exceed the Geofence.



	Aerial Survey Data Extent <i>Extent of data to be collected that meets quality requirements</i>
	Geofence Corner
	Geofence <i>Maximum allowable extent for UAS flight</i>
	Disposal Cell
	Site Boundary

0 0.1 0.2
Miles

Coconino County

U.S. DEPARTMENT OF ENERGY OFFICE OF LEGACY MANAGEMENT	Work Performed by RSI EnTech, LLC <small>Under DOE Contract 89303020DL.M000001</small>
Aerial Survey Extent Tuba City, AZ, Disposal Site	
DATE PREPARED: February 3, 2022	FILE NAME: S3823000