

NOT TO SCALE

(Rev. 12 1/03)

NOTE: NODES ARE AS SHOWN ON TABLE 12.2-1.



**PERRY NUCLEAR POWER PLANT**

Radiation Source Model

Figure 12.2-1

Removed in Accordance with RIS 2015-17

PERRY NUCLEAR POWER PLANT  
10 CENTER RD., PERRY, OHIO 44081

RADIATION ZONES,  
PLAN A ABOVE ELEVS. 568'-6", 574'-10",  
577'-6" AND 580'-6"  
FIGURE 12.3-1  
(DWG. E-013-0003-00000)

Removed in Accordance with RIS 2015-17

PERRY NUCLEAR POWER PLANT  
10 CENTER RD., PERRY, OHIO 44081

RADIATION ZONES, PLAN B ABOVE  
ELEVS. 593'-6", 599'-0", 600'-6",  
602'-6", AND 605'-6"

FIGURE 12.3-2  
(DWG. E-013-0004-00000)

Removed in Accordance with RIS 2015-17

PERRY NUCLEAR POWER PLANT  
10 CENTER RD., PERRY, OHIO 44081

RADIATION ZONES, PLAN C ABOVE  
ELEVS. 620'-6", 623'-6" AND  
624'-6"  
FIGURE 12.3-3  
(DWG. E-013-0005-00000)

Removed in Accordance with RIS 2015-17

PERRY NUCLEAR POWER PLANT  
10 CENTER RD., PERRY, OHIO 44081

RADIATION ZONES, PLAN D  
ABOVE ELEVS. 638'-6", 642'-0"  
AND 647'-6"  
FIGURE 12.3-4  
(DWG. E-013-0006-00000)

Removed in Accordance with RIS 2015-17

PERRY NUCLEAR POWER PLANT  
10 CENTER RD., PERRY, OHIO 44081

RADIATION ZONES, PLAN E ABOVE  
ELEVS. 652'-0" AND EL. 654'-6",

FIGURE 12.3-5  
(DWG. E-013-0007-00000)

Removed in Accordance with RIS 2015-17

PERRY NUCLEAR POWER PLANT  
10 CENTER RD., PERRY, OHIO 44081

RADIATION ZONES, PLAN F ABOVE  
ELEVS. 664'-7", 665'-0", AND  
670'-6"  
FIGURE 12.3-6  
(DWG. E-013-0008-00000)

Removed in Accordance with RIS 2015-17

PERRY NUCLEAR POWER PLANT  
10 CENTER RD., PERRY, OHIO 44081

RADIATION ZONE, PLAN G ABOVE  
ELEVS. 689'-6"

FIGURE 12.3-7  
(DWG. E-013-0009-00000)



Removed in Accordance with RIS 2015-17

PERRY NUCLEAR POWER PLANT  
10 CENTER RD., PERRY, OHIO 44081

RADIATION ZONE,  
PLAN H ROOF PLAN

FIGURE 12.3-8  
(DWG. E-013-0010-00000)

Removed in Accordance with RIS 2015-17

PERRY NUCLEAR POWER PLANT  
10 CENTER RD., PERRY, OHIO 44081

RADIATION ZONE,  
SECTION A-A

FIGURE 12.3-9  
(DWG. E-013-0011-00000)

Removed in Accordance with RIS 2015-17

PERRY NUCLEAR POWER PLANT  
10 CENTER RD., PERRY, OHIO 44081

RADIATION ZONE,  
SECTION B-B

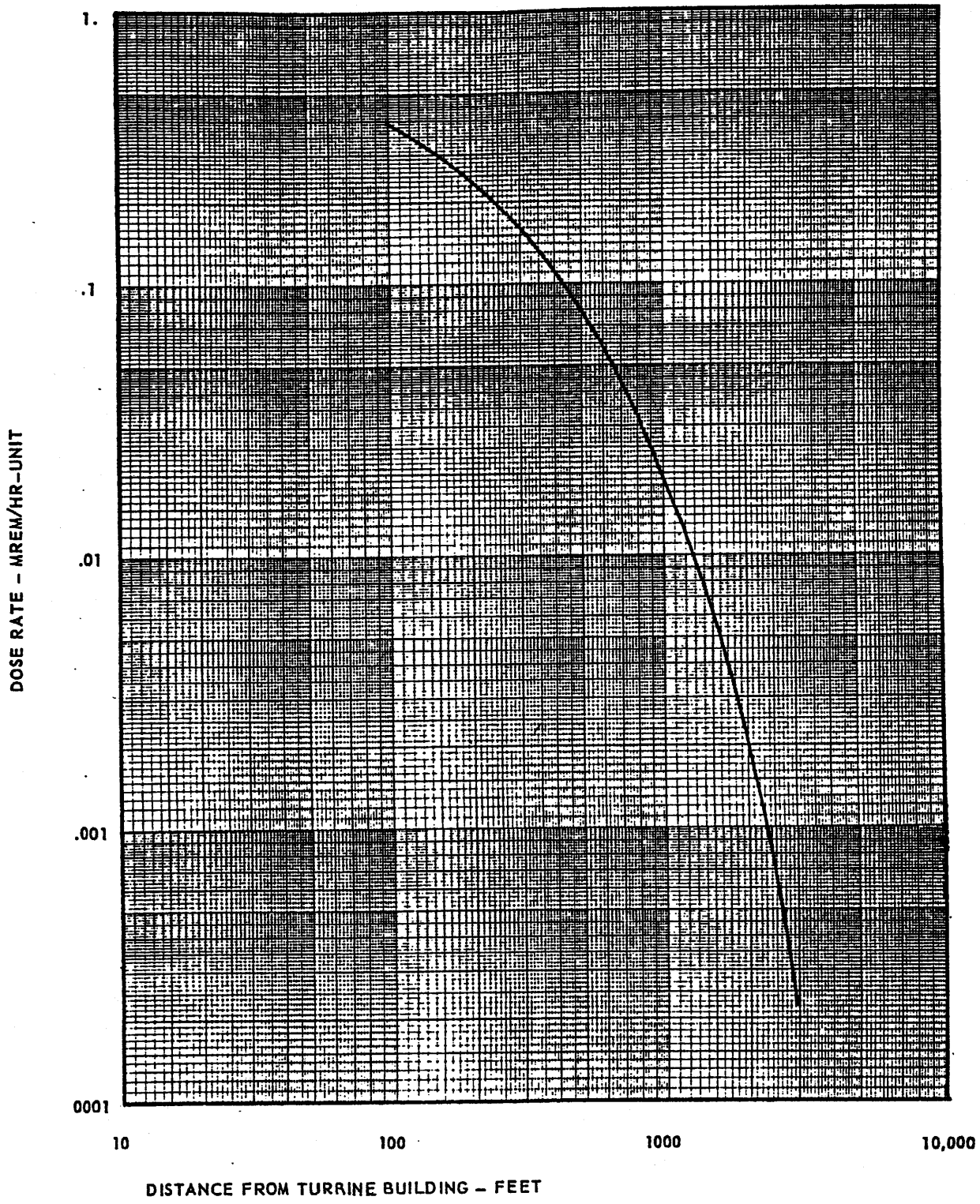
FIGURE 12.3-10  
(DWG. E-013-0012-00000)

Removed in Accordance with RIS 2015-17

PERRY NUCLEAR POWER PLANT  
10 CENTER RD., PERRY, OHIO 44081

RADIATION ZONE,  
SECTION C-C

FIGURE 12.3-11  
(DWG. E-013-0013-00000)



(Rev. 12 1/03)



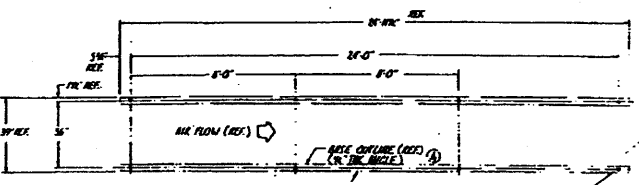
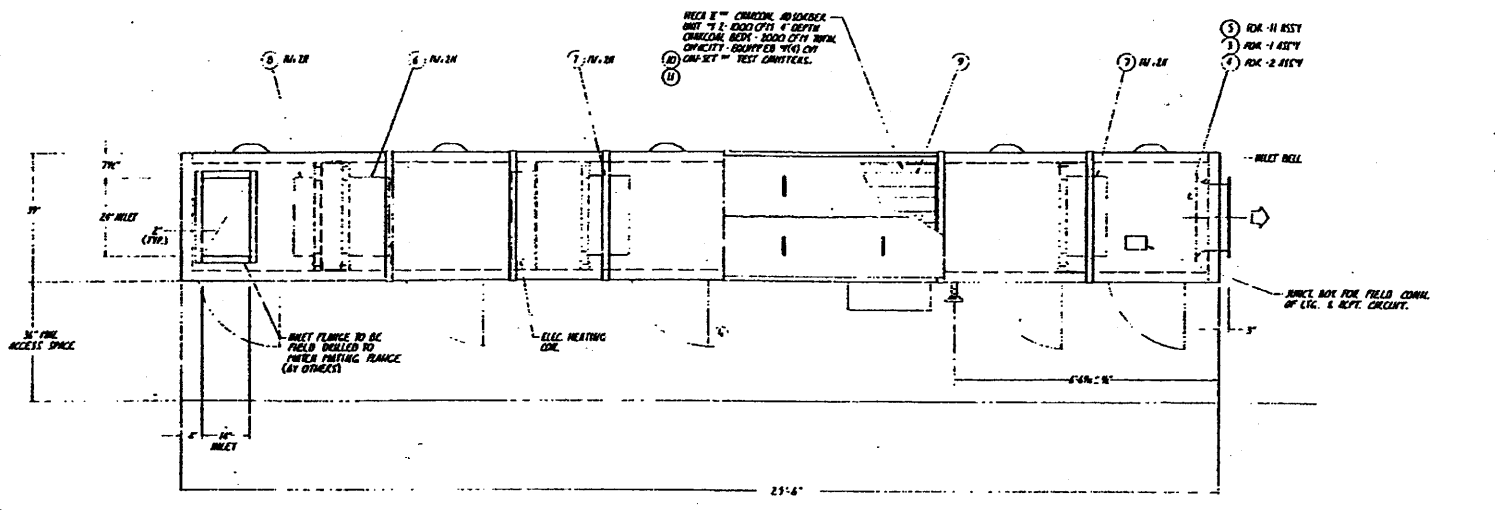
**PERRY NUCLEAR POWER PLANT**

Skyshine Dose Rate (mrem/hr)  
vs. Distance (ft.)

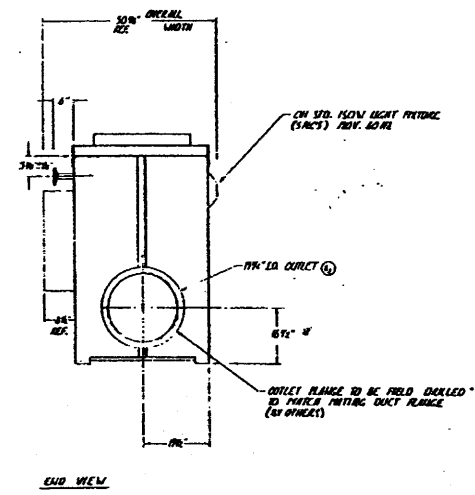
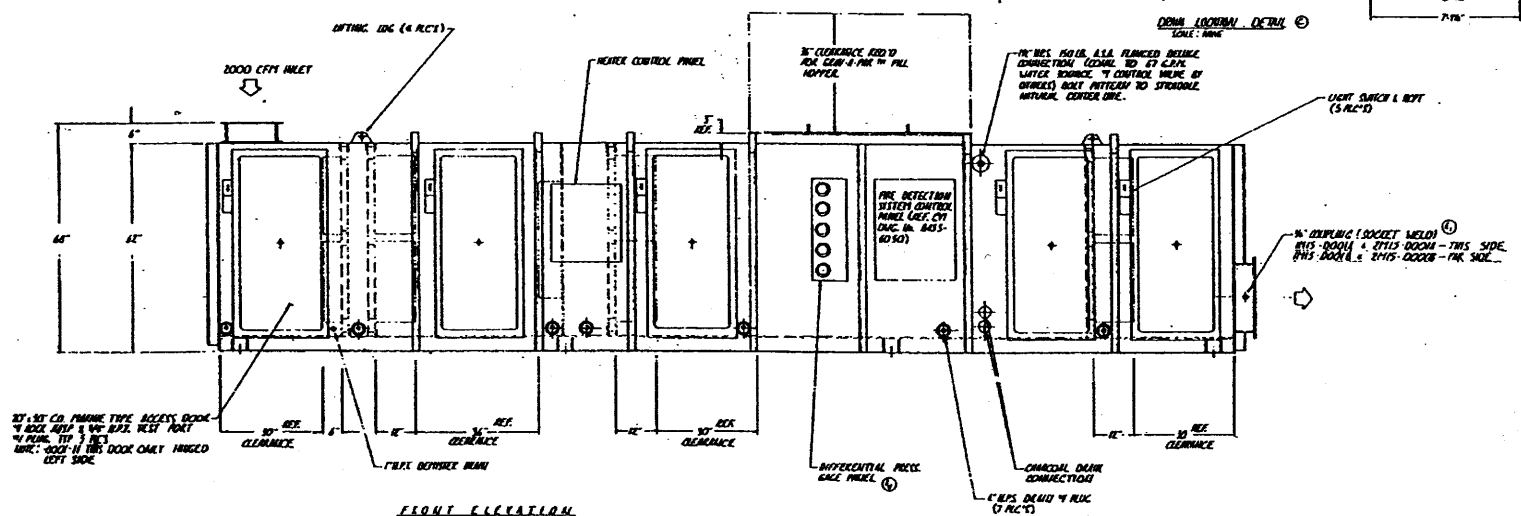
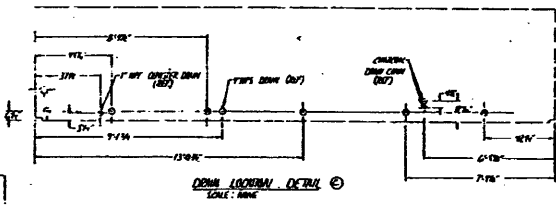
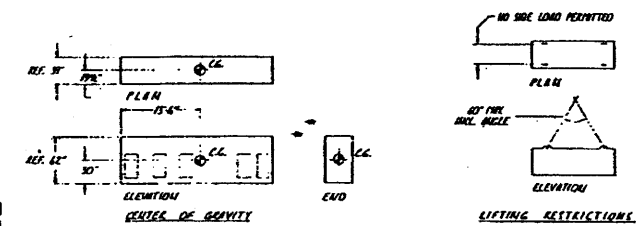
Figure 12.3-12

NO.	REV.	DATE	DESCRIPTION
1			ISSUED AS PER REVISED DRAWING
2			ISSUED AS PER REVISED DRAWING
3			ISSUED AS PER REVISED DRAWING
4			ISSUED AS PER REVISED DRAWING
5			ISSUED AS PER REVISED DRAWING

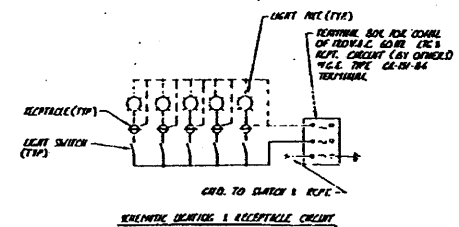
Q. REVISED		BILL OF MATERIAL		DESCRIPTION	QUANTITY
1	1	1	1	1/2" DIA. BRASS VALVE	1
1	1	1	1	1/2" DIA. BRASS VALVE	1
1	1	1	1	1/2" DIA. BRASS VALVE	1
1	1	1	1	1/2" DIA. BRASS VALVE	1
1	1	1	1	1/2" DIA. BRASS VALVE	1
1	1	1	1	1/2" DIA. BRASS VALVE	1
1	1	1	1	1/2" DIA. BRASS VALVE	1
1	1	1	1	1/2" DIA. BRASS VALVE	1
1	1	1	1	1/2" DIA. BRASS VALVE	1
1	1	1	1	1/2" DIA. BRASS VALVE	1



PLAN - ANCHOR BOLT LOCATION FOR - 0001-1 SHOWN (-0001-2 IS OPPOSITE)  
SCALE 1/4" = 1'-0"



- GENERAL NOTES
- ANCHOR BOLT MATERIAL SHALL BE A307 & NOT TO BE ABANDONED BY OTHERS
  - PAINTING TO BE PERFORMED PER THE 8415-23-1055 (EXTENSIVE TO BE PAINTED ONLY - FINISH PAINT BY OTHERS)
  - ITEM NO. 6, 7, 8, 9, 10, 11 TO BE SHIPPED SEPARATE FROM UNIT.
  - TEST OPERATING AT 14.50 PSIG (SEE SHIPPING AT 15.00 PSIG)
  - SEE CH. 0171 MANUAL FOR INSTALLATION OF FITTINGS & COMPONENTS
  - ADDITIONAL PRESSURE - 1 PSIG TO 11 PSIG
  - DESIGN AIR FLOW 10000 CFM
  - CUSTOMER TO MAKE FINAL INSPECTION TO THIS DRAWING.
- 0001-1 SHOWN (CASE EQUIPMENT NO. 2115-0001)  
0001-2 OPPOSITE (CASE EQUIPMENT NO. 2115-0002 & 2115-0003)  
0001-11 OPPOSITE & MATED (CASE EQUIPMENT NO. 2115-0004)



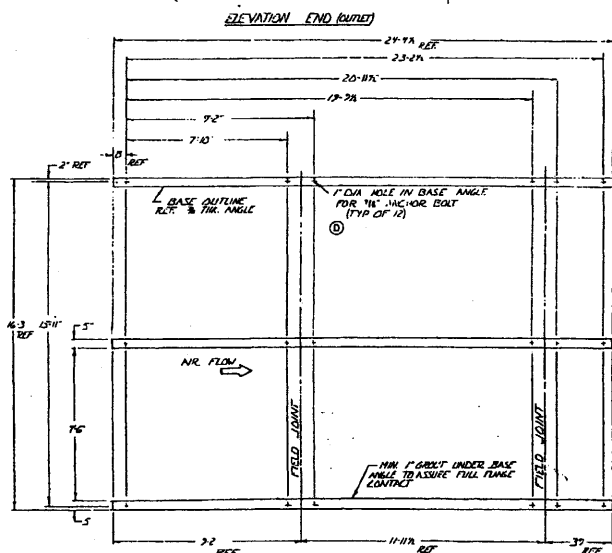
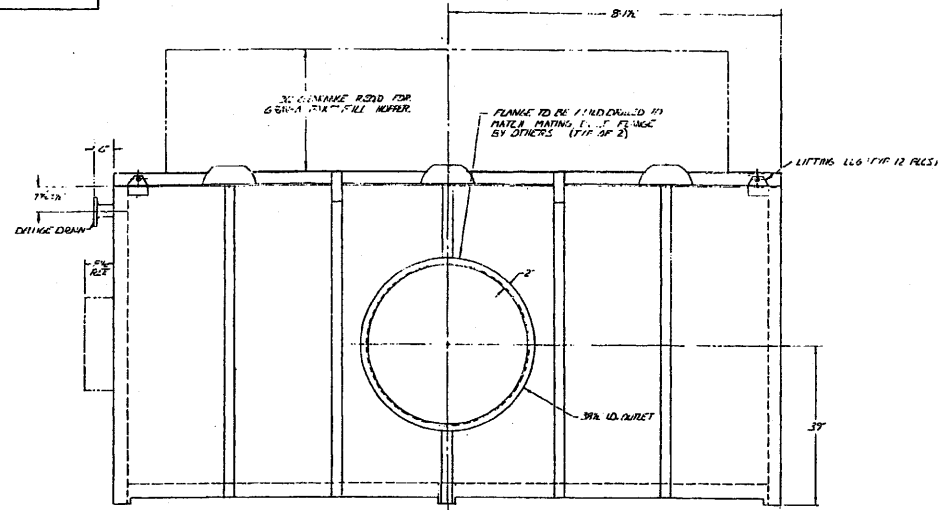
(Rev. 12 1/03)

**PERRY NUCLEAR POWER PLANT**

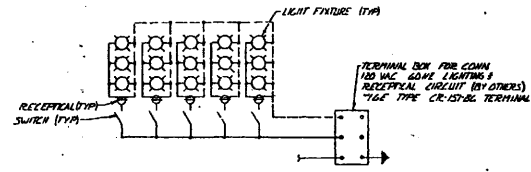
General Arrangement -  
Annulus Exhaust Unit

Figure 12.3-13

REVISIONS					
CHG	DATE	BY	APPD.	REV.	DESCRIPTION
2	11/14/83	WJ	WJ	1	REVISED PER DESIGN
1	11/14/83	WJ	WJ	1	REVISED PER DESIGN
0	11/14/83	WJ	WJ	1	CHANGED ANCHOR BOLT SEL FROM 1/4" TO 3/8"

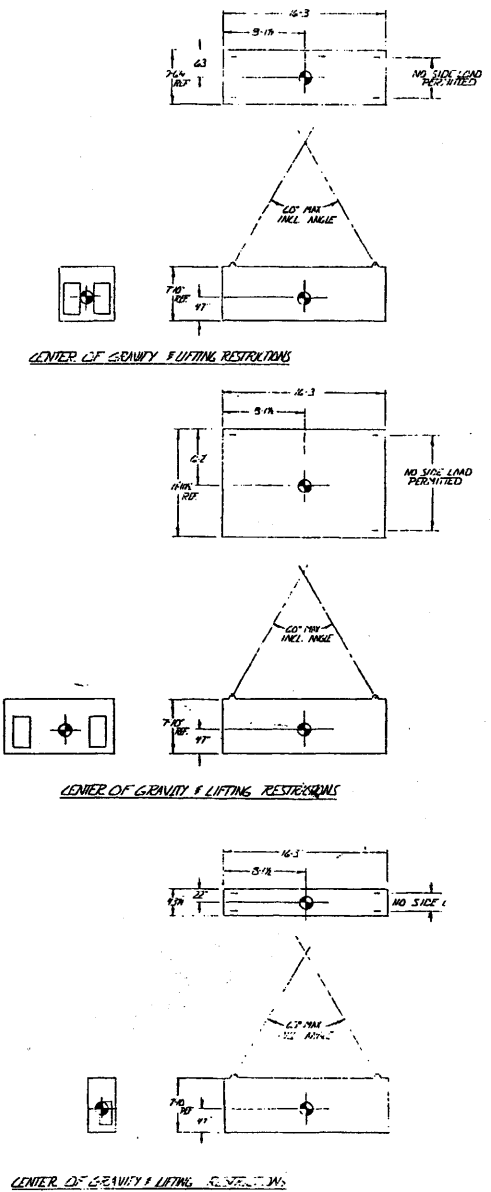


PLAN - ANCHOR BOLT LOCATION PER 0002-1 SHOWN  
0002-2 OPPOSITE  
SCALE 3/4\"/>



SCHEMATIC LIGHTING & REPT CIRCUIT

NUMBER	QTY	AS	ITEM	PART NUMBER	REV	DESCRIPTION	MATERIAL
1	1		1				
1	1		2				
1	1		3	11415-5202-1	C	MAIN ASSEMBLY CONT. FOR EMER. RECIR. PL.	
1	1		4	11415-5202-2	C	MAIN ASSEMBLY CONT. FOR EMER. RECIR. PL.	
21	21		5				
21	21		6	11415-5202-3	C	FIELD LIGHT	
21	21		7	11415-5202-4	C	FIELD LIGHT	
21	21		8	11415-5202-5	C	FIELD LIGHT	
21	21		9				
21	21		10	11415-5202-6	C	FIELD LIGHT	
21	21		11				
21	21		12	11415-5202-7	C	FIELD LIGHT	
21	21		13	11415-5202-8	C	FIELD LIGHT	
21	21		14				
21	21		15				
1	1		16				



- ANCHOR BOLT MATERIAL SHALL BE ASTM A577 TO BE FURNISHED BY OTHERS.
- MATERIAL TO BE PAINTED PER C.V. SPEC. NO. 2105-23-0155 (EXCEPT FOR THE PORTION COVERED BY FINISH PAINT BY OTHERS).
- ITEM NO. 678 IS TO BE SHIPPED SEPARATE FROM UNIT.
- ITEM NO. 678 IS TO BE SHIPPED WITH THE UNIT.
- USE C.V. SPEC. MANUAL FOR INSTALLATION OF FIELD LIGHTS.
- INSTALLATION PROCEDURE - 1. PS&L - 1.1.1.1.1.1.1.
- DESIGN AIR FLOW - 3000 CFM.
- CUSTOMER TO MAKE FINAL INSPECTION TO THIS DRAWING.

GENERAL NOTES:

(Rev. 12 1/03)

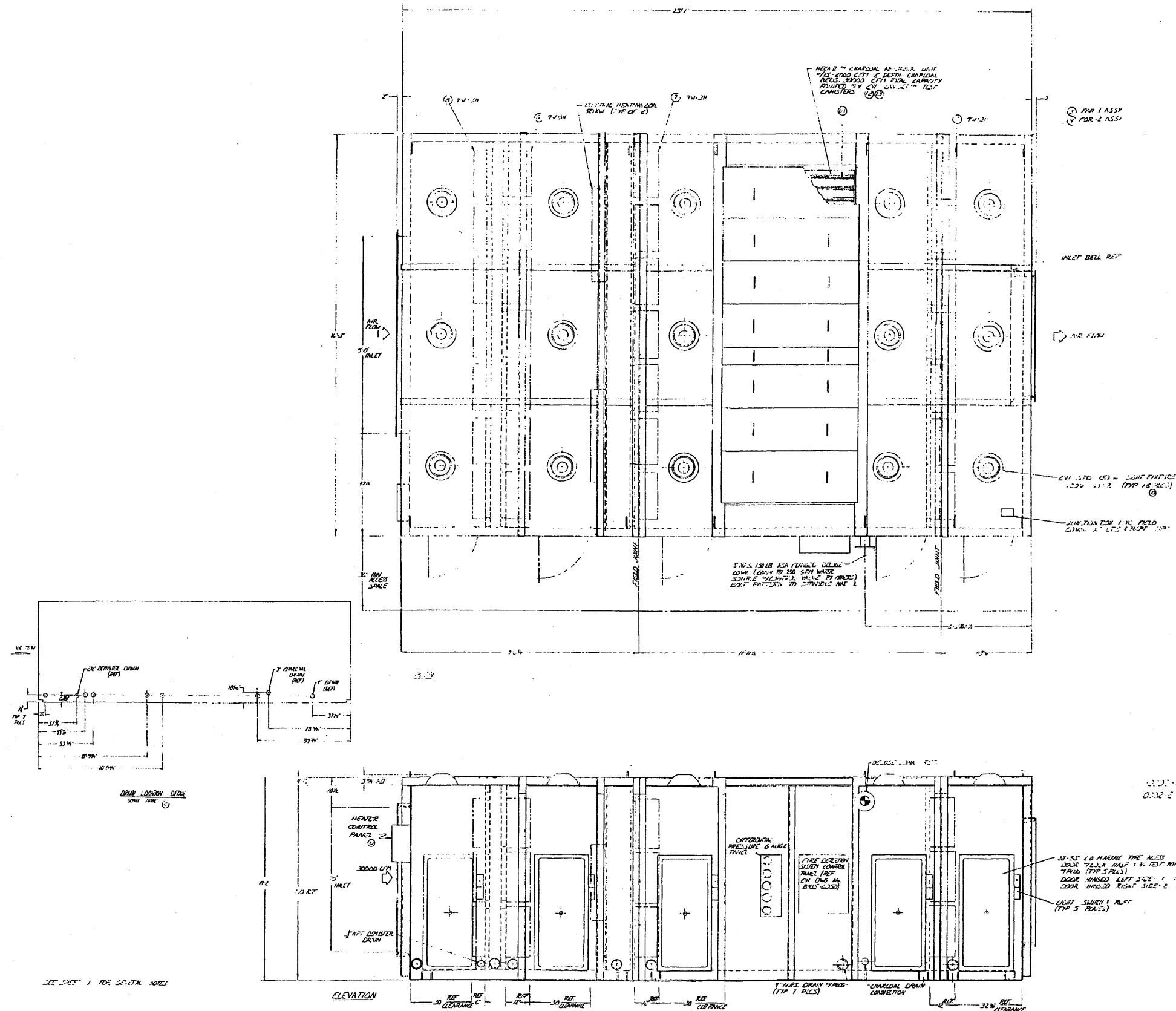
**PERRY NUCLEAR POWER PLANT**

General Arrangement - Control Room  
Emergency Recirculation Plenum

Figure 12.3-14 (Sheet 1 of 2)

REVISIONS					
CHK	DATE	BY	APPD	REV	DESCRIPTION
R	12/12/02	AS/DAV	REC	1	REVISED TO 1/2/03
C	10/01/02	AS/DAV	REC	2	ADDED 1/2" AIR INLET
D	08/21/02	AS/DAV	REC	3	ADDED 1/2" AIR INLET

BILL OF MATERIAL			
ITEM	PART NUMBER	DESCRIPTION	MATERIAL



SEE SHEET 1 FOR SPECIAL NOTES

(Rev. 12 1/03)

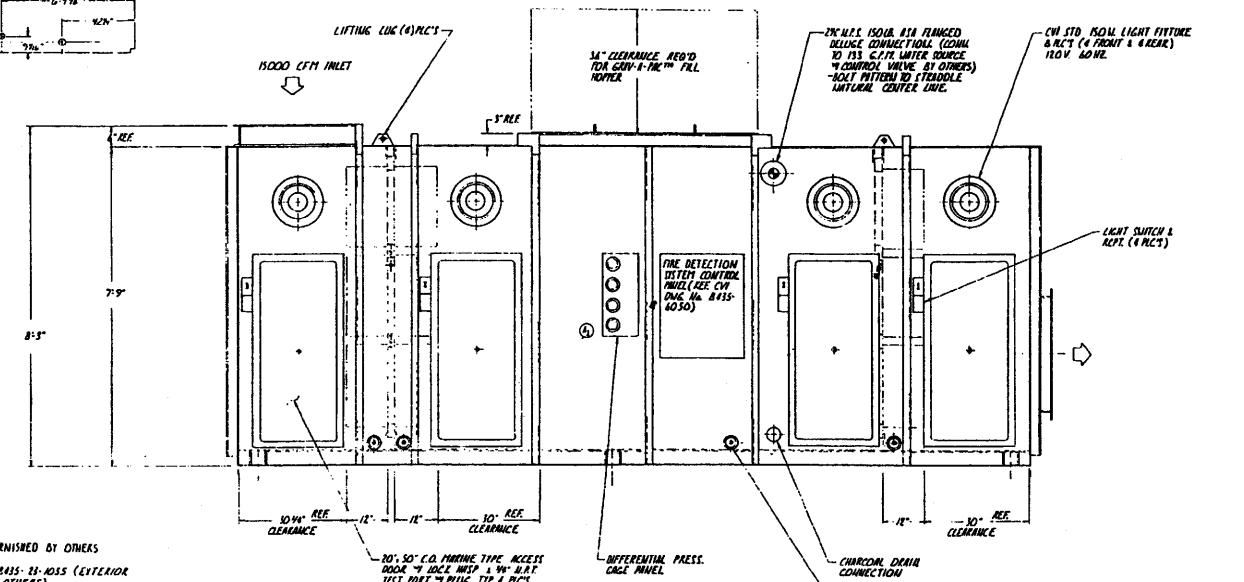
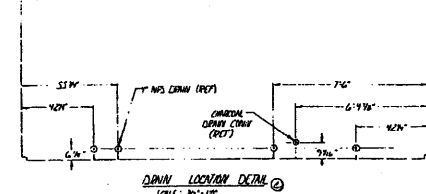
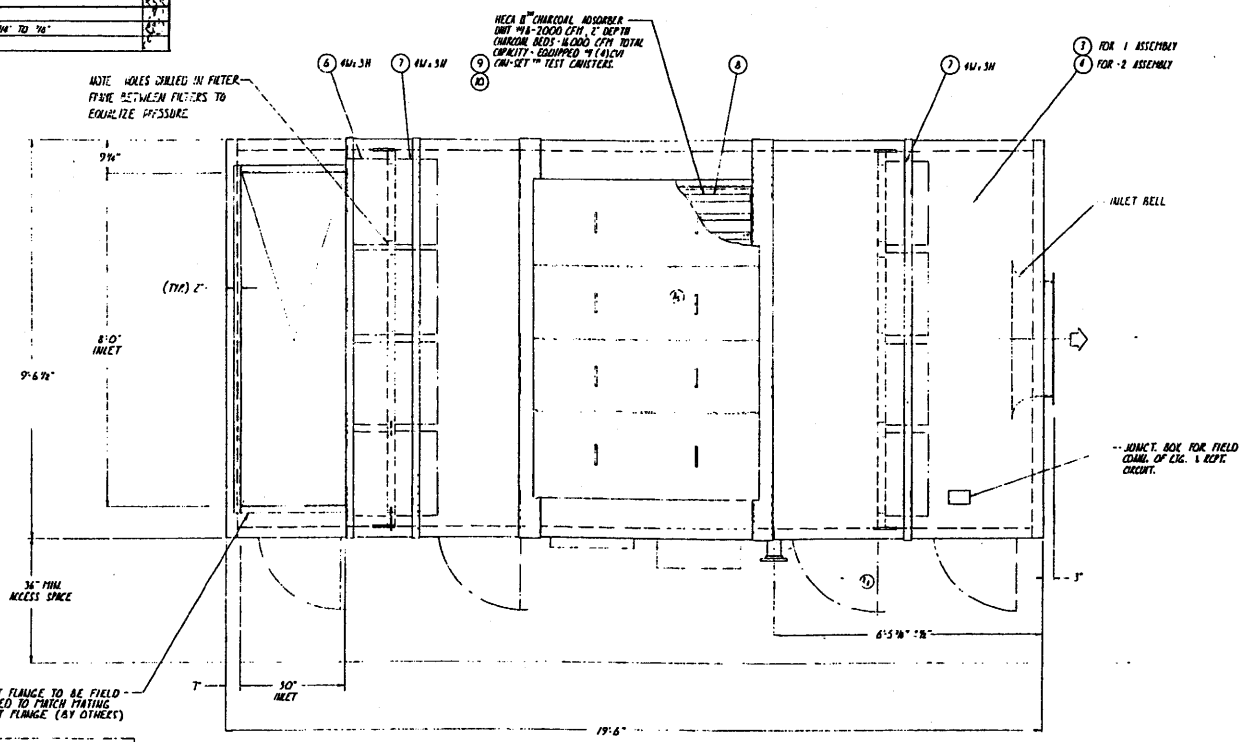
**PERRY NUCLEAR POWER PLANT**

General Arrangement - Control Room  
 Emergency Recirculation Plenum

Figure 12.3-14 (Sheet 2 of 2)

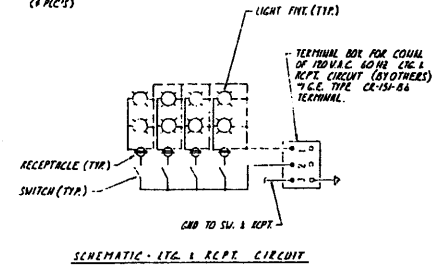


CHG	DATE	BY	CHKD	APPV	DESCRIPTION	REV
1	8-1-77	ALC	REP	REP	1 REV OUTLET VMC 15" ID x 35" HIGH 1 ADDED ANGLE THICKNESS 1 REV CASE PANEL 1 REV BODL SUBG IN PLAN 1 REV WEL CHNERS	1
2	8-1-77	ALC	REP	REP	ADDED GEN NOTE "B"	2
3	8-1-77	ALC	REP	REP	REV'D DRAW LOCATION DETAIL	3
4	8-1-77	ALC	REP	REP	REVISED ANCHOR BOLT SIZE FROM 1/2" TO 3/4"	4

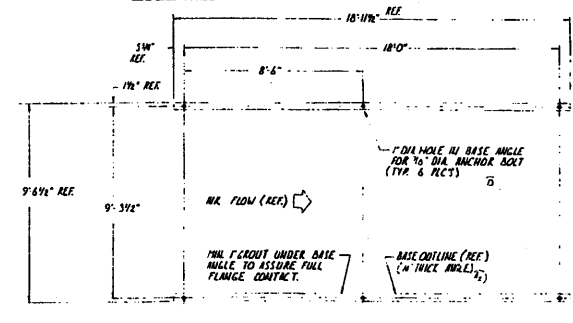


- GENERAL NOTES
- ANCHOR BOLT MATERIAL TO BE A307-A101 TO BE FURNISHED BY OTHERS
  - WELDS TO BE PAINTED PER CHG SPEC. NO. 8115-11-1055 (EXTERIOR TO BE PRIME COATED ONLY - FINISH PAINT BY OTHERS).
  - ITEMS 4, 7, 8, 9, 10 TO BE SHIPPED SEPARATE FROM UNIT.
  - SEE CHG 0117 MANUAL FOR INSTALLATION OF FILTERS & COMPONENTS.
  - HOUSING DESIGN PRESSURE - 1 PSIG TO +1 PSIG.
  - DESIGN AIR FLOW 15,000 CFM
  - CONTRACTOR TO MAKE FINAL INSPECTION TO THIS DRAWING.

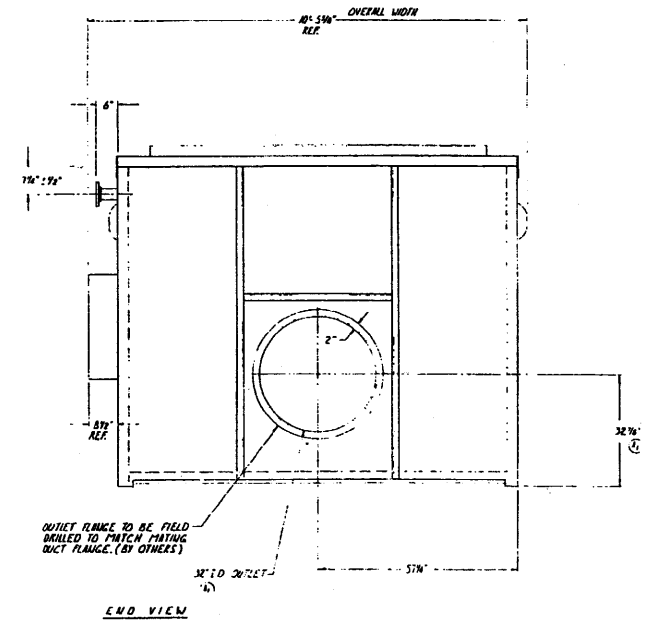
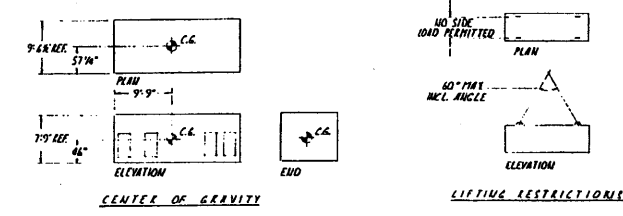
FRONT ELEVATION  
 -0001-1 SHOWN (CUST. EQUIPMENT No. 17134-0001A & 17134-0001B)  
 -0003-2 OPPOSITE (CUST. EQUIPMENT No. 27134-0001A & 27134-0001B)



NO.	QTY	ITEM	PART NUMBER	DESCRIPTION	MATERIAL
1	1	1			
2	1	2	8115-1901-1	MAIN BODY OFF-GAS BLDG. EXHAUST N.	17134-0001A & B
3	1	3	8115-1901-2	MAIN BODY OFF-GAS BLDG. EXHAUST N.	27134-0001A & B
4	1	4	21-1001-0102	PRE-FILTER	
5	1	5	21-1001-0103	HEAVY FILTER	
6	1	6	21-1001-0201	CHARCOAL	
7	1	7	21-1001-0301	CHG. SET TYP. CONTAINER #8115	STD. PART
8	1	8	21-1001-0302	BLANKING COVER	



PLAN - ANCHOR BOLT LOCATION FOR DOOR-1 (DOOR-2 OPPOSITE)  
 SCALE: 1/4" = 1'-0"



(Rev. 12 1/03)

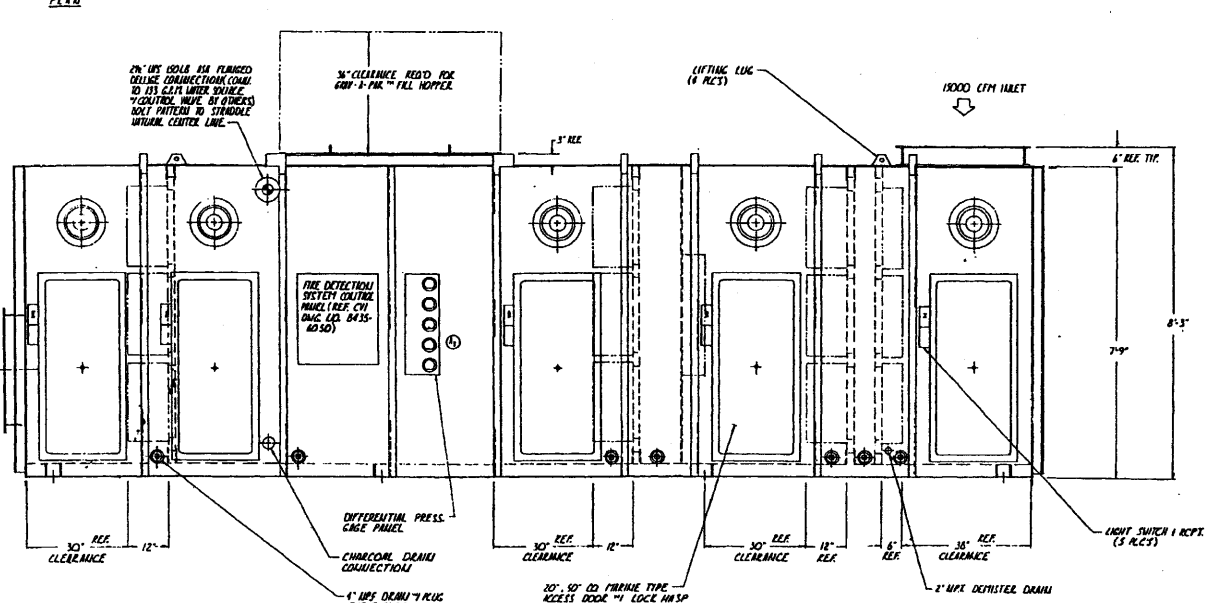
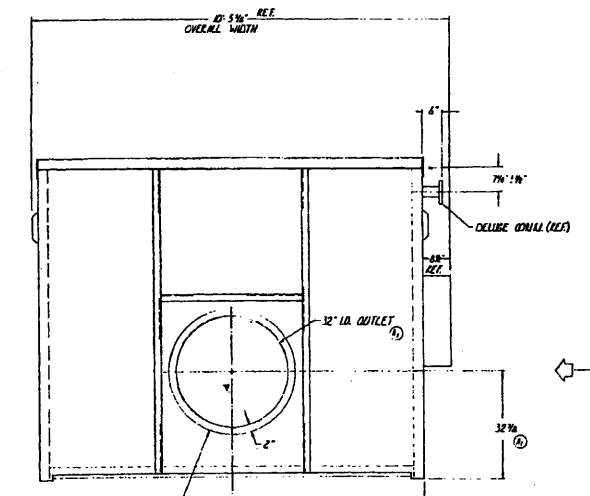
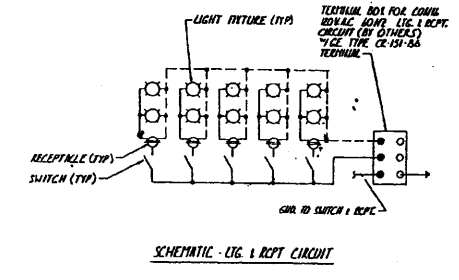
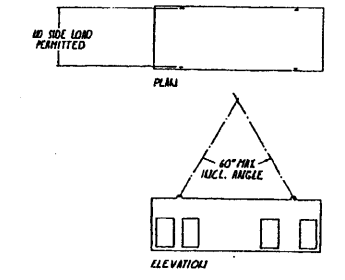
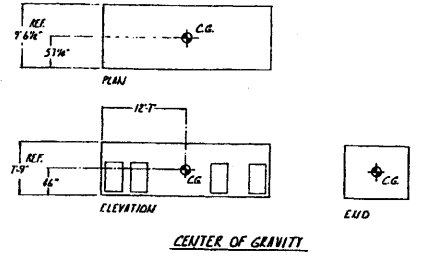
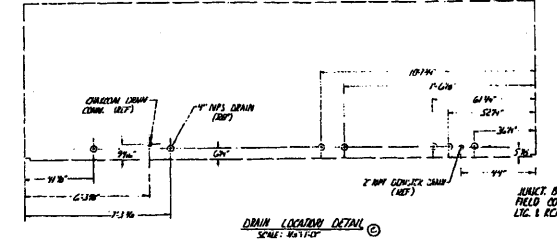
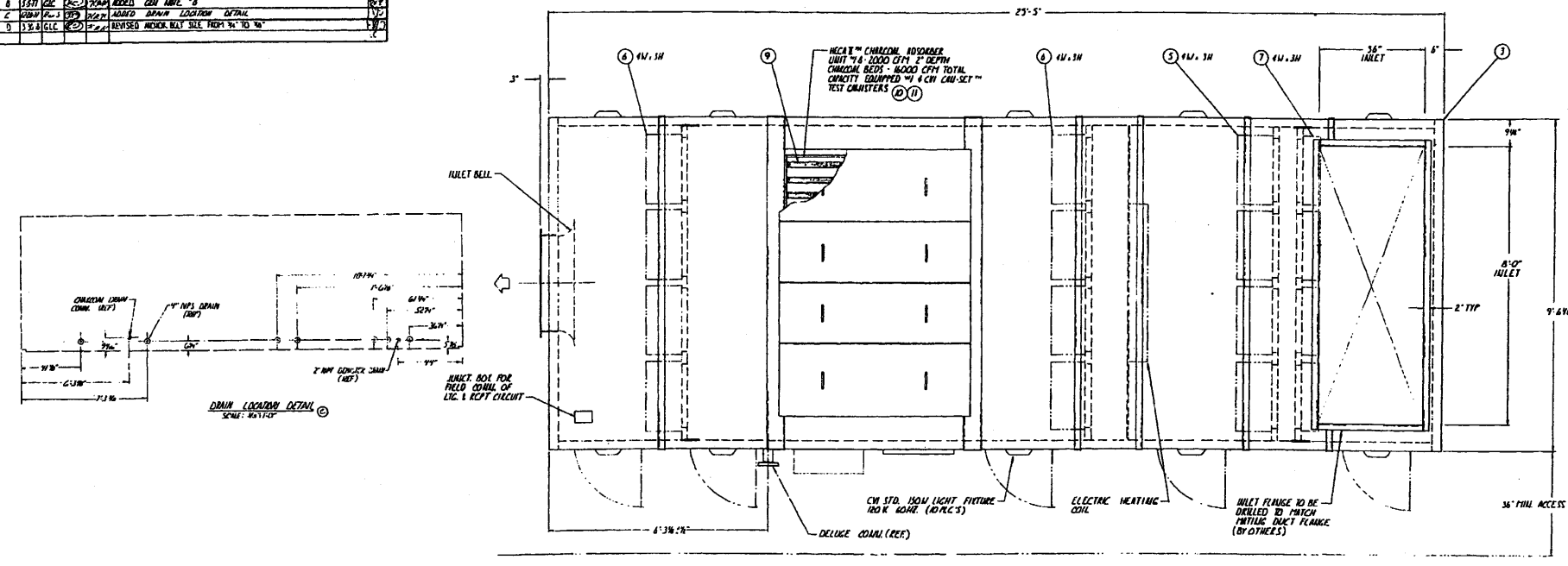
**PERRY NUCLEAR POWER PLANT**

General Arrangement - Offgas  
 Building Exhaust Plenum

Figure 12.3-15

NO.	DATE	BY	CHKD	REVISION
1	1/27/62	W.P.	W.P.	REV OUTLET LHS 32" INCH 2 ADDED BELL THICKNESS
2	1/27/62	W.P.	W.P.	REV GAGE PANEL
3	1/27/62	W.P.	W.P.	REV GAGE PANEL
4	1/27/62	W.P.	W.P.	REV GAGE PANEL
5	1/27/62	W.P.	W.P.	REV GAGE PANEL
6	1/27/62	W.P.	W.P.	REV GAGE PANEL
7	1/27/62	W.P.	W.P.	REV GAGE PANEL
8	1/27/62	W.P.	W.P.	REV GAGE PANEL
9	1/27/62	W.P.	W.P.	REV GAGE PANEL
10	1/27/62	W.P.	W.P.	REV GAGE PANEL

ITEM	QTY	DESCRIPTION	UNIT
1	1	PLATE	SQ. FT.
2	1	PLATE	SQ. FT.
3	1	PLATE	SQ. FT.
4	1	PLATE	SQ. FT.
5	1	PLATE	SQ. FT.
6	1	PLATE	SQ. FT.
7	1	PLATE	SQ. FT.
8	1	PLATE	SQ. FT.
9	1	PLATE	SQ. FT.
10	1	PLATE	SQ. FT.
11	1	PLATE	SQ. FT.
12	1	PLATE	SQ. FT.
13	1	PLATE	SQ. FT.
14	1	PLATE	SQ. FT.
15	1	PLATE	SQ. FT.
16	1	PLATE	SQ. FT.
17	1	PLATE	SQ. FT.
18	1	PLATE	SQ. FT.
19	1	PLATE	SQ. FT.
20	1	PLATE	SQ. FT.
21	1	PLATE	SQ. FT.
22	1	PLATE	SQ. FT.
23	1	PLATE	SQ. FT.
24	1	PLATE	SQ. FT.
25	1	PLATE	SQ. FT.
26	1	PLATE	SQ. FT.
27	1	PLATE	SQ. FT.
28	1	PLATE	SQ. FT.
29	1	PLATE	SQ. FT.
30	1	PLATE	SQ. FT.
31	1	PLATE	SQ. FT.
32	1	PLATE	SQ. FT.
33	1	PLATE	SQ. FT.
34	1	PLATE	SQ. FT.
35	1	PLATE	SQ. FT.
36	1	PLATE	SQ. FT.
37	1	PLATE	SQ. FT.
38	1	PLATE	SQ. FT.
39	1	PLATE	SQ. FT.
40	1	PLATE	SQ. FT.
41	1	PLATE	SQ. FT.
42	1	PLATE	SQ. FT.
43	1	PLATE	SQ. FT.
44	1	PLATE	SQ. FT.
45	1	PLATE	SQ. FT.
46	1	PLATE	SQ. FT.
47	1	PLATE	SQ. FT.
48	1	PLATE	SQ. FT.
49	1	PLATE	SQ. FT.
50	1	PLATE	SQ. FT.

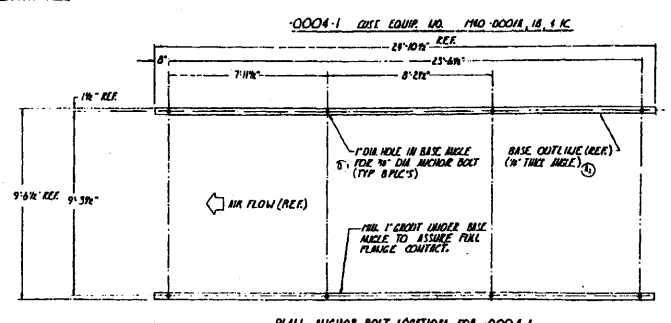


EUD ELEVATION

FRONT ELEVATION

1. WORKING DRAWING SHALL BE WITH A-101 TO BE FURNISHED BY OTHERS
2. WORKING TO BE PRINTED PER CRY SPEC. No. 8435-23-1035 (EXCEPT TO BE PERFORMED ONLY - FINISH PRINT BY OTHERS)
3. ITEM NO. 5, 6, 7, 9, 10, 11 TO BE SHIPPED SEPARATE FROM UNIT.
4. TOTAL OPERATING WT. 20000 LB. (EST) SHIPPING WT. 22000 LB. (EST)
5. SEE CRY CHIT MANUAL FOR INSTALLATION OF FILTERS & COMPONENTS.
6. HOUSING DESIGN PRESSURE - 1.0 PSIG @ 1.0 PSIG
7. DESIGN AIR FLOW - 15000 CFM
8. CUSTOMER TO MAKE FROM INSPECTION TO THIS DRAWING.

GENERAL NOTES



PLAN - ANCHOR BOLT LOCATION FOR 0004-1  
SCALE: 1/4"=1'-0"

(Rev. 12 1/03)

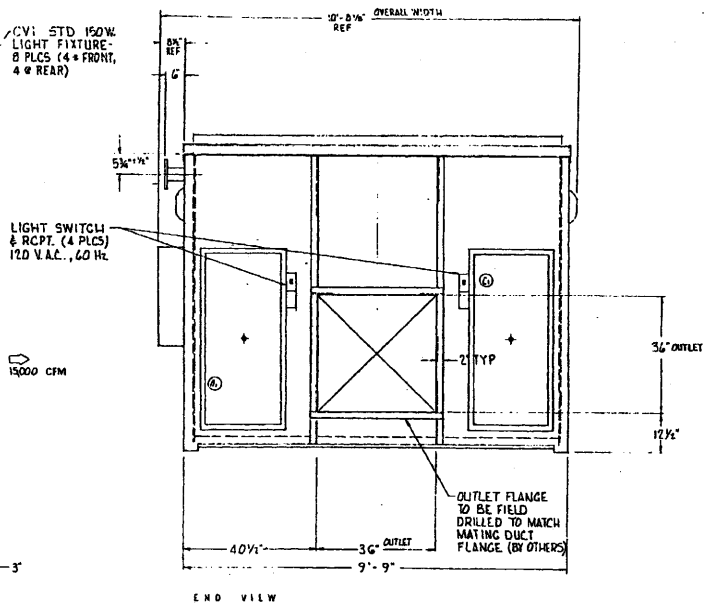
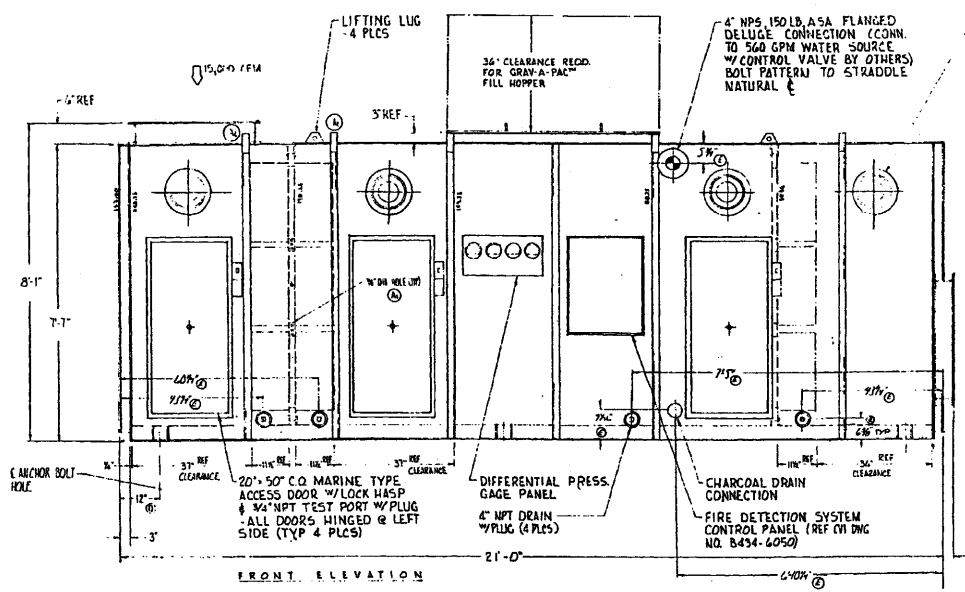
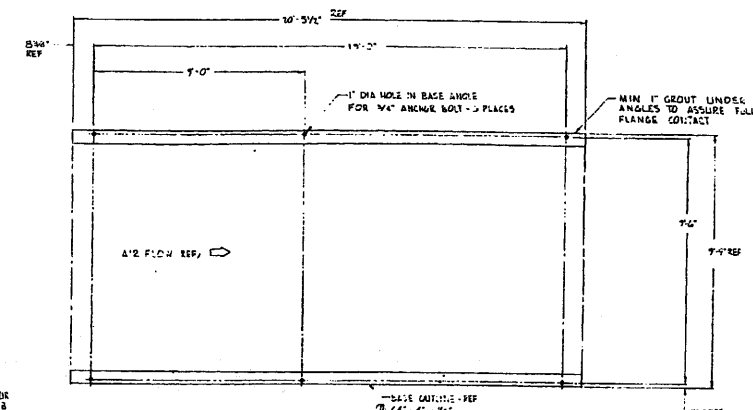
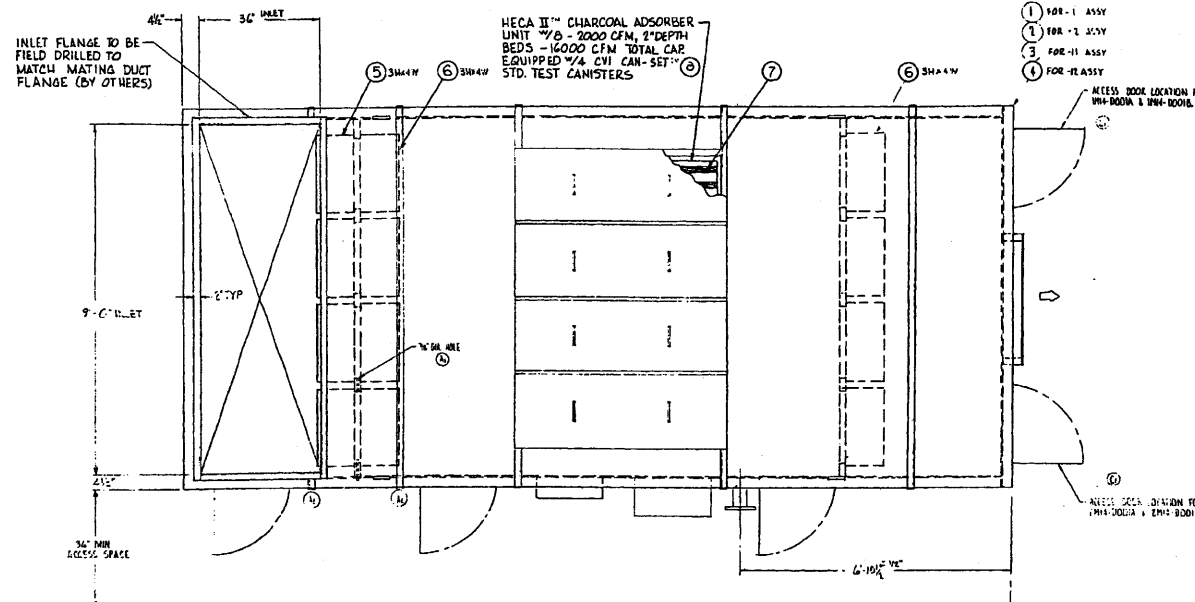
PERRY NUCLEAR POWER PLANT

General Arrangement - Fuel Handling Area Exhaust Plenum

Figure 12.3-16

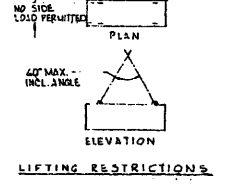
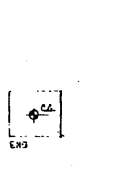
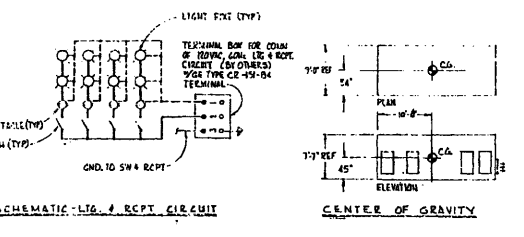
NO.	DATE	BY	CHKD.	APPV.	DESCRIPTION	REV.
1	8/25/78	WJ	WJ	WJ	ISSUED FOR CONSTRUCTION, DRYWELL VESSEL	1
2	11/17/78	WJ	WJ	WJ	REVISED FOR FIELD DRILLING	2
3	11/17/78	WJ	WJ	WJ	REVISED FOR FIELD DRILLING	3
4	11/17/78	WJ	WJ	WJ	REVISED FOR FIELD DRILLING	4
5	11/17/78	WJ	WJ	WJ	REVISED FOR FIELD DRILLING	5
6	11/17/78	WJ	WJ	WJ	REVISED FOR FIELD DRILLING	6

NO. REQUIRED		BILL OF MATERIAL		DESCRIPTION		MATERIAL	
REV.	QTY.	ITEM	PART NUMBER	REV.	DESCRIPTION	QTY.	MATERIAL
1	1	1	8434-1121-1	1	W/ASHY COND. VESSEL, DRYWELL PURGE EXHAUST	1	304L SS
1	1	2	8434-1122-1	1	W/ASHY COND. VESSEL, DRYWELL PURGE EXHAUST	1	304L SS
1	1	3	8434-1123-1	1	W/ASHY COND. VESSEL, DRYWELL PURGE EXHAUST	1	304L SS
1	1	4	8434-1124-1	1	W/ASHY COND. VESSEL, DRYWELL PURGE EXHAUST	1	304L SS
1	1	5	8434-1125-1	1	W/ASHY COND. VESSEL, DRYWELL PURGE EXHAUST	1	304L SS
1	1	6	8434-1126-1	1	W/ASHY COND. VESSEL, DRYWELL PURGE EXHAUST	1	304L SS
1	1	7	8434-1127-1	1	W/ASHY COND. VESSEL, DRYWELL PURGE EXHAUST	1	304L SS
1	1	8	8434-1128-1	1	W/ASHY COND. VESSEL, DRYWELL PURGE EXHAUST	1	304L SS
1	1	9	8434-1129-1	1	W/ASHY COND. VESSEL, DRYWELL PURGE EXHAUST	1	304L SS
1	1	10	8434-1130-1	1	W/ASHY COND. VESSEL, DRYWELL PURGE EXHAUST	1	304L SS
1	1	11	8434-1131-1	1	W/ASHY COND. VESSEL, DRYWELL PURGE EXHAUST	1	304L SS
1	1	12	8434-1132-1	1	W/ASHY COND. VESSEL, DRYWELL PURGE EXHAUST	1	304L SS
1	1	13	8434-1133-1	1	W/ASHY COND. VESSEL, DRYWELL PURGE EXHAUST	1	304L SS
1	1	14	8434-1134-1	1	W/ASHY COND. VESSEL, DRYWELL PURGE EXHAUST	1	304L SS
1	1	15	8434-1135-1	1	W/ASHY COND. VESSEL, DRYWELL PURGE EXHAUST	1	304L SS
1	1	16	8434-1136-1	1	W/ASHY COND. VESSEL, DRYWELL PURGE EXHAUST	1	304L SS
1	1	17	8434-1137-1	1	W/ASHY COND. VESSEL, DRYWELL PURGE EXHAUST	1	304L SS
1	1	18	8434-1138-1	1	W/ASHY COND. VESSEL, DRYWELL PURGE EXHAUST	1	304L SS
1	1	19	8434-1139-1	1	W/ASHY COND. VESSEL, DRYWELL PURGE EXHAUST	1	304L SS
1	1	20	8434-1140-1	1	W/ASHY COND. VESSEL, DRYWELL PURGE EXHAUST	1	304L SS
1	1	21	8434-1141-1	1	W/ASHY COND. VESSEL, DRYWELL PURGE EXHAUST	1	304L SS
1	1	22	8434-1142-1	1	W/ASHY COND. VESSEL, DRYWELL PURGE EXHAUST	1	304L SS
1	1	23	8434-1143-1	1	W/ASHY COND. VESSEL, DRYWELL PURGE EXHAUST	1	304L SS
1	1	24	8434-1144-1	1	W/ASHY COND. VESSEL, DRYWELL PURGE EXHAUST	1	304L SS
1	1	25	8434-1145-1	1	W/ASHY COND. VESSEL, DRYWELL PURGE EXHAUST	1	304L SS
1	1	26	8434-1146-1	1	W/ASHY COND. VESSEL, DRYWELL PURGE EXHAUST	1	304L SS
1	1	27	8434-1147-1	1	W/ASHY COND. VESSEL, DRYWELL PURGE EXHAUST	1	304L SS
1	1	28	8434-1148-1	1	W/ASHY COND. VESSEL, DRYWELL PURGE EXHAUST	1	304L SS
1	1	29	8434-1149-1	1	W/ASHY COND. VESSEL, DRYWELL PURGE EXHAUST	1	304L SS
1	1	30	8434-1150-1	1	W/ASHY COND. VESSEL, DRYWELL PURGE EXHAUST	1	304L SS
1	1	31	8434-1151-1	1	W/ASHY COND. VESSEL, DRYWELL PURGE EXHAUST	1	304L SS
1	1	32	8434-1152-1	1	W/ASHY COND. VESSEL, DRYWELL PURGE EXHAUST	1	304L SS
1	1	33	8434-1153-1	1	W/ASHY COND. VESSEL, DRYWELL PURGE EXHAUST	1	304L SS
1	1	34	8434-1154-1	1	W/ASHY COND. VESSEL, DRYWELL PURGE EXHAUST	1	304L SS
1	1	35	8434-1155-1	1	W/ASHY COND. VESSEL, DRYWELL PURGE EXHAUST	1	304L SS
1	1	36	8434-1156-1	1	W/ASHY COND. VESSEL, DRYWELL PURGE EXHAUST	1	304L SS
1	1	37	8434-1157-1	1	W/ASHY COND. VESSEL, DRYWELL PURGE EXHAUST	1	304L SS
1	1	38	8434-1158-1	1	W/ASHY COND. VESSEL, DRYWELL PURGE EXHAUST	1	304L SS
1	1	39	8434-1159-1	1	W/ASHY COND. VESSEL, DRYWELL PURGE EXHAUST	1	304L SS
1	1	40	8434-1160-1	1	W/ASHY COND. VESSEL, DRYWELL PURGE EXHAUST	1	304L SS
1	1	41	8434-1161-1	1	W/ASHY COND. VESSEL, DRYWELL PURGE EXHAUST	1	304L SS
1	1	42	8434-1162-1	1	W/ASHY COND. VESSEL, DRYWELL PURGE EXHAUST	1	304L SS
1	1	43	8434-1163-1	1	W/ASHY COND. VESSEL, DRYWELL PURGE EXHAUST	1	304L SS
1	1	44	8434-1164-1	1	W/ASHY COND. VESSEL, DRYWELL PURGE EXHAUST	1	304L SS
1	1	45	8434-1165-1	1	W/ASHY COND. VESSEL, DRYWELL PURGE EXHAUST	1	304L SS
1	1	46	8434-1166-1	1	W/ASHY COND. VESSEL, DRYWELL PURGE EXHAUST	1	304L SS
1	1	47	8434-1167-1	1	W/ASHY COND. VESSEL, DRYWELL PURGE EXHAUST	1	304L SS
1	1	48	8434-1168-1	1	W/ASHY COND. VESSEL, DRYWELL PURGE EXHAUST	1	304L SS
1	1	49	8434-1169-1	1	W/ASHY COND. VESSEL, DRYWELL PURGE EXHAUST	1	304L SS
1	1	50	8434-1170-1	1	W/ASHY COND. VESSEL, DRYWELL PURGE EXHAUST	1	304L SS



- 0001-1 (CUST. EQUIP. NO. 1MIA-0001A) SHOWN & NOTED
- 0001-11 (CUST. EQUIP. NO. 1MIA-0001A) SHOWN & NOTED
- 0001-2 (CUST. EQUIP. NO. 1MIA-0001B) OPPOSITE & NOTED
- 0001-1E (CUST. EQUIP. NO. 1MIA-0001B) OPPOSITE & NOTED

1. HOUSING TO BE PAINTED PER CUI SPEC. NO. 8434-11055 (EXTENSION TO BE PRIME COATED ONLY - FINISH PLANT BY OTHERS)
  2. ITEM 5, 6, 7 & 8 SHIPPED SEPARATE FROM UNIT.
  3. TOTAL OPERATING WT. 14,100 LBS EST., SHIPPING WT. OF HEAVIEST ITEM 14,100 LBS EST.
  4. SEE CUI O & M MANUAL FOR INSTALLATION OF FILTERS & COMPONENTS.
  5. HOUSING DESIGN PRESSURE -0.5 PSIG TO +1 PSIG
  6. DESIGN AIR FLOW 15,000 CFM
  7. CUSTOMER TO MAKE FINAL INSPECTION TO THIS DRAWING
- GENERAL NOTES



(Rev. 12 1/03)

**PERRY NUCLEAR POWER PLANT**

General Arrangement -  
Containment Vessel &  
Drywell Purge Exhaust

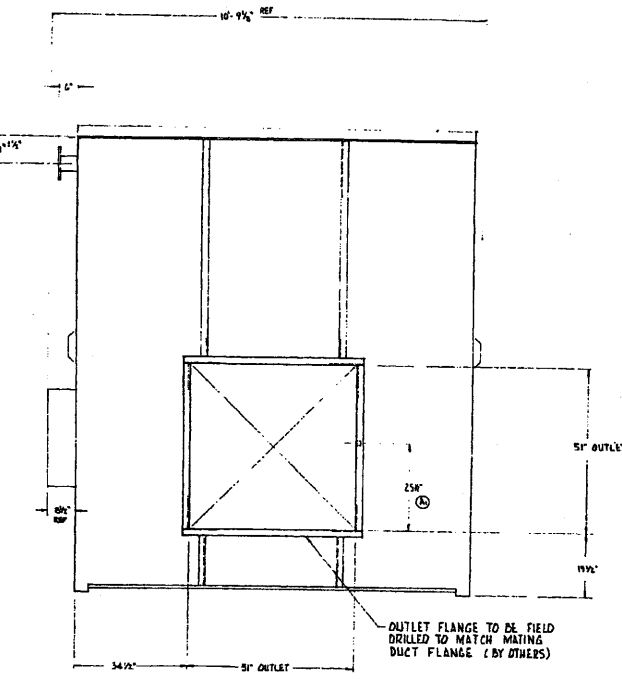
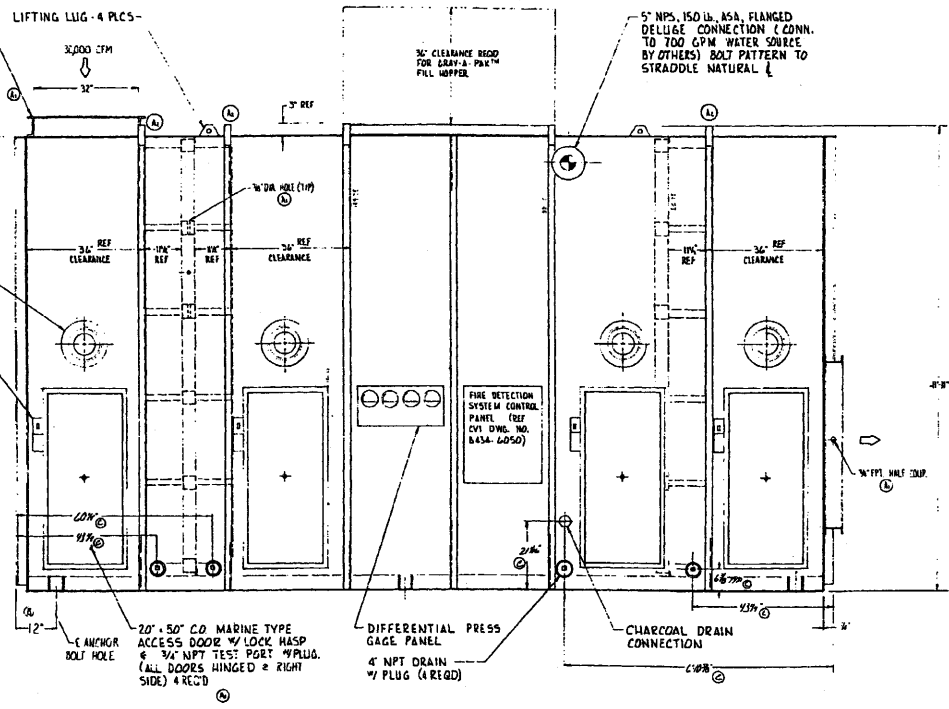
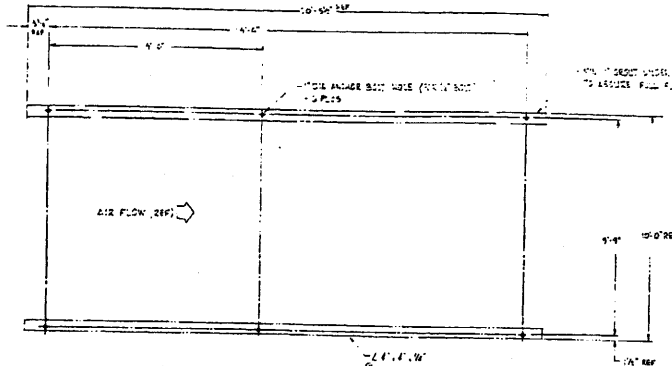
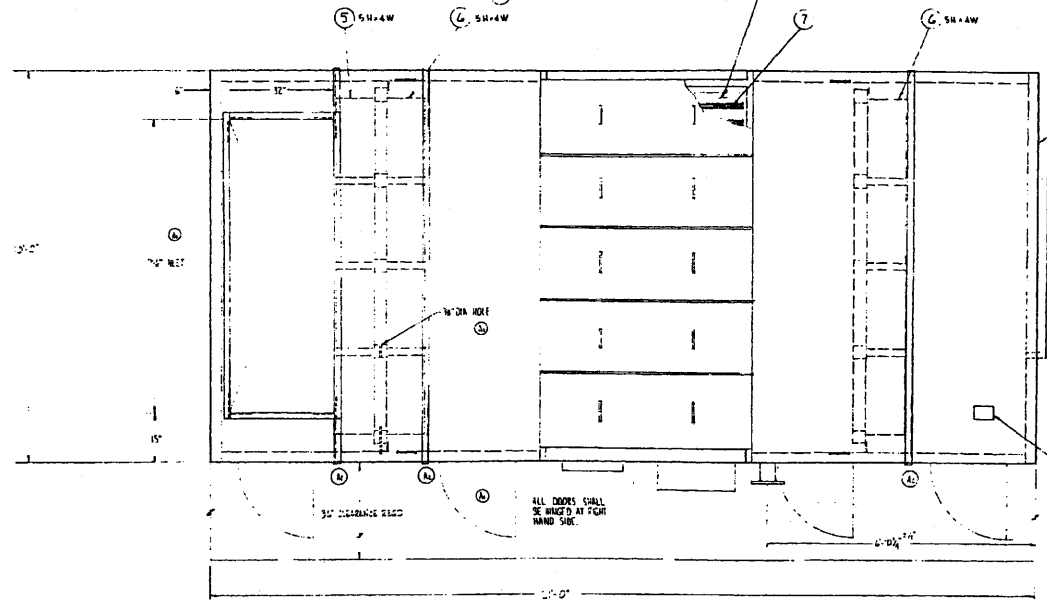
Figure 12.3-17



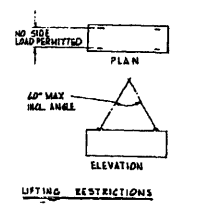
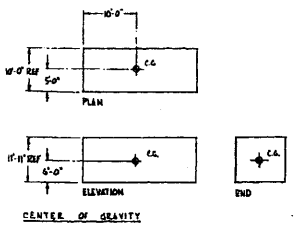
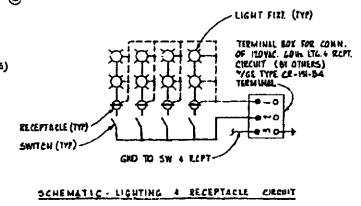
REV	DATE	BY	CHKD	DESCRIPTION
1	08/11/03	...	...	ISSUED FOR CONSTRUCTION
2	08/11/03	...	...	ISSUED FOR CONSTRUCTION
3	08/11/03	...	...	ISSUED FOR CONSTRUCTION
4	08/11/03	...	...	ISSUED FOR CONSTRUCTION
5	08/11/03	...	...	ISSUED FOR CONSTRUCTION

HECA™ CHARCOAL ADSORBER UNIT #10 - 3000 CFM & DEPTH CHARCOAL BEDS - 30,000 CFM TOTAL CAPACITY - EQUIPPED W/4 CAN-SET™ CVI STD TEST CANISTERS

ITEM	PART NUMBER	QTY	DESCRIPTION	MATERIAL
1	...	...	...	...
2	...	...	...	...
3	...	...	...	...
4	...	...	...	...
5	...	...	...	...
6	...	...	...	...
7	...	...	...	...
8	...	...	...	...
9	...	...	...	...
10	...	...	...	...



0003-1 (CUST. EQUIP. NO. P31-0001A) SHOWN  
 0003-11 (CUST. EQUIP. NO. P31-0001B)



- HOUSING TO BE PAINTED PER CIV SPEC BMS43-105 (EXTERIOR PRIMER ONLY - FINISH COAT BY OTHERS)
- ITEM NO. 5, 6, 7 & 8 TO BE SHIPPED SEPARATE FROM UNIT.
- TOTAL OPER. WT. 37,000 LBS EST. SHIPPING WT. OF HEAVIEST ITEM 14,500 LBS EST.
- SEE CIV O&M MANUAL FOR INSTALLATION OF FILTERS & COMPONENTS.
- HOUSING DESIGN PRESSURE --.6 PSIG TO -1 PSIG
- DESIGN AIR FLOW 30,000 CFM
- CUSTOMER TO MAKE FINAL INSPECTION TO THIS DRAWING

GENERAL NOTES

(Rev. 12 1/03)

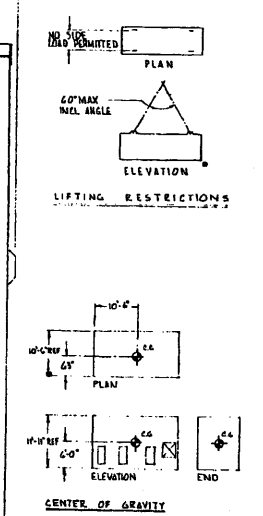
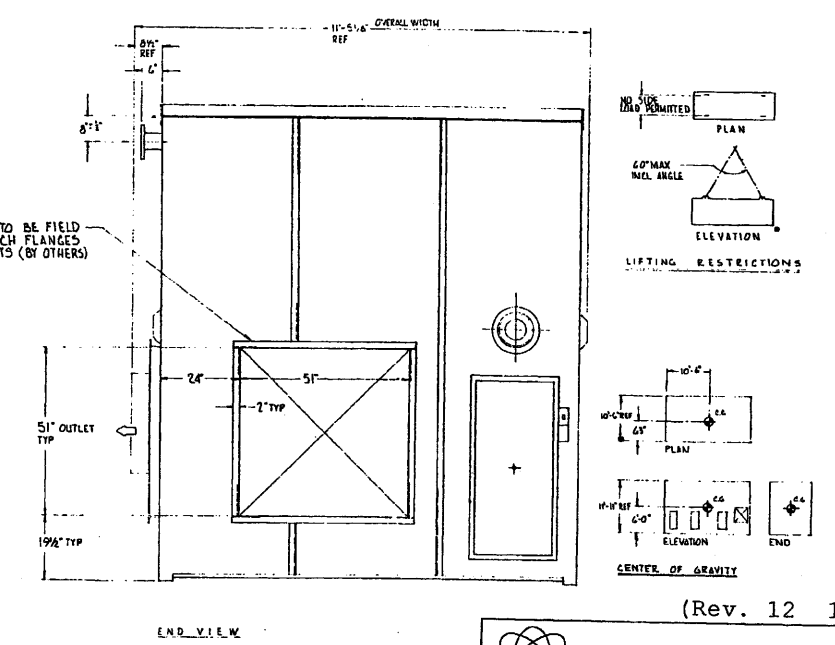
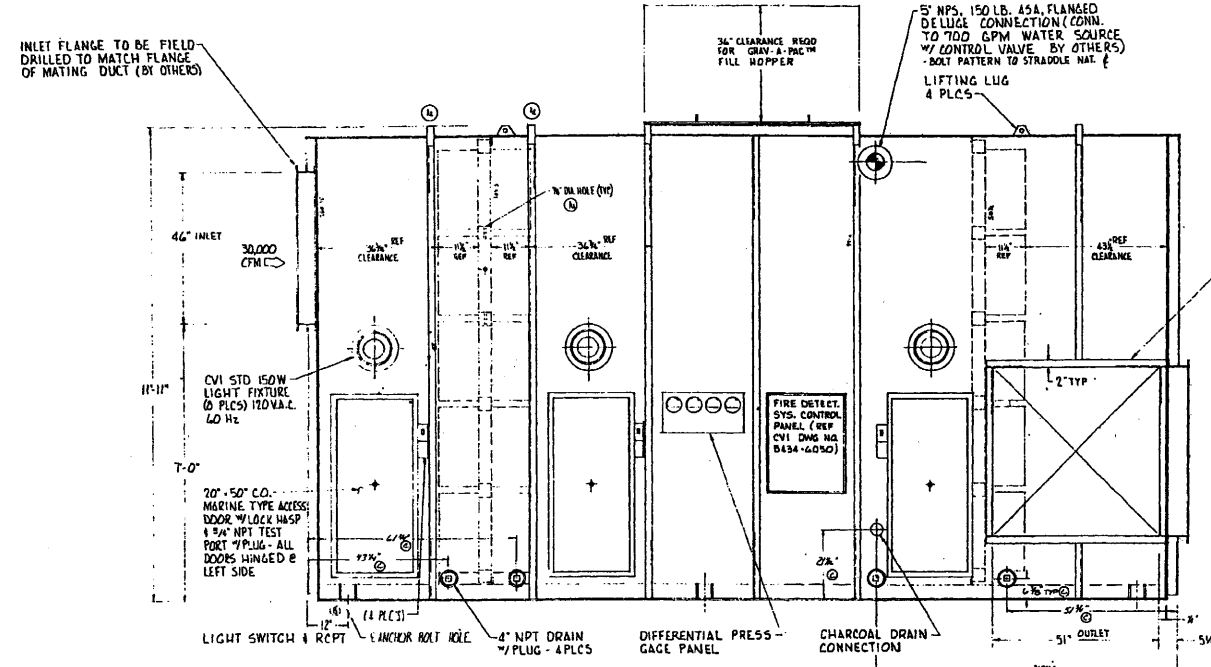
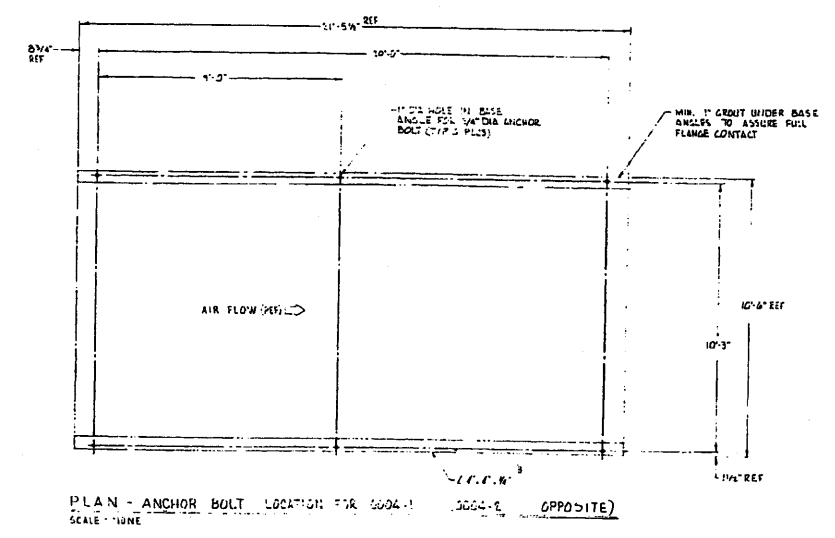
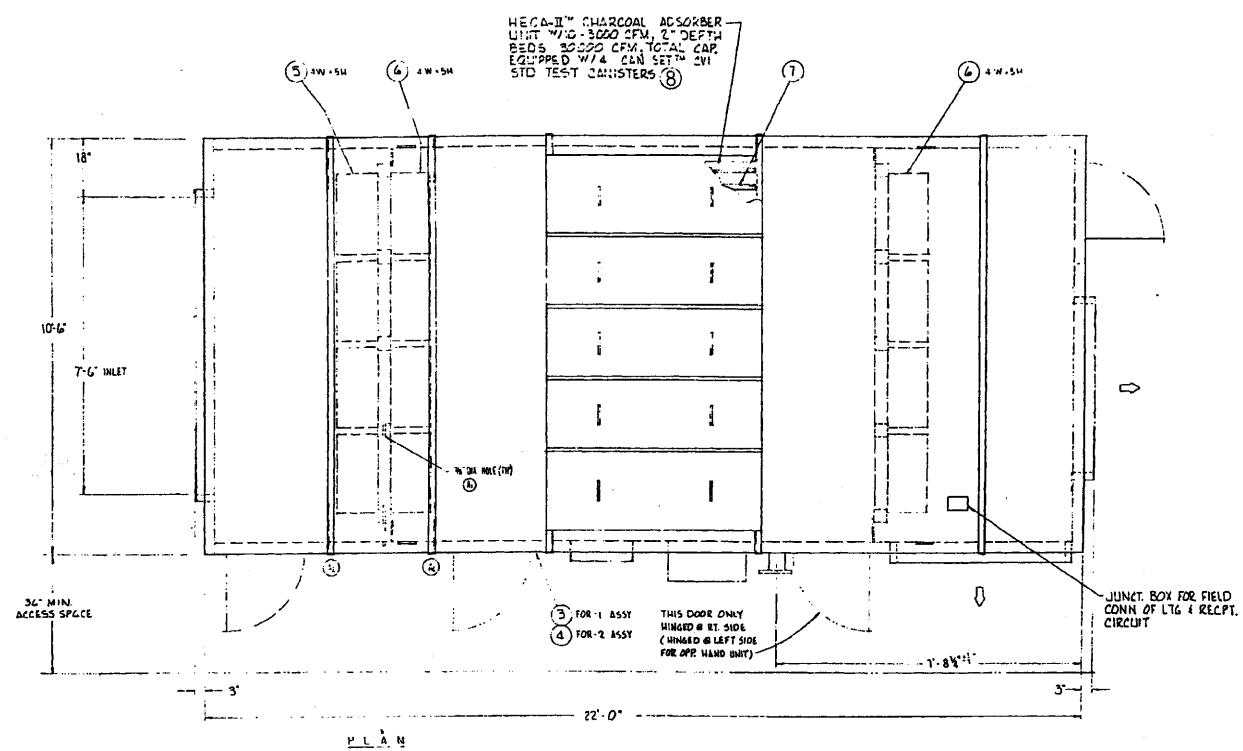
**PERRY NUCLEAR POWER PLANT**

General Arrangement -  
 Radwaste Building Exhaust Plenum

Figure 12.3-19

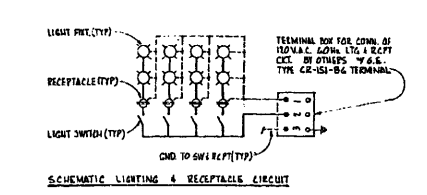
NO.	DATE	BY	CHKD	APPV	DESCRIPTION
1	10/11/01	WJ	WJ	WJ	REVISED PER CUSTOMER COMMENTS: ADDED STRUCTURE
2	10/17/01	WJ	WJ	WJ	REVISED PER CUSTOMER COMMENTS: ADDED ANCHOR BOLT LOCATION INFORMATION
3	10/23/01	WJ	WJ	WJ	REVISED PER CUSTOMER COMMENTS: ADDED ANCHOR BOLT LOCATION INFORMATION

NO	REQD	ITEM	PART NUMBER	QTY	DESCRIPTION	MATERIAL
1	1	1		1		
2	1	2	8434-5004-1	E	MIXTURE-AUXIL. BLDG. EXH. PLENUM	1N38-0001A
3	1	4	8434-5004-1	E	MIXTURE-AUXIL. BLDG. EXH. PLENUM	5M38-0001A
4	10	5	98-3402-0016	E	PRE-FILTER	
5	10	6	10-1002-0014	E	AIR FILTER	
6	10	7	91-8075-0001	E	CHARCOAL	
7	4	8	99-1500-01223	D	CAN-SET™ MIXTURE & VCY™	STD. PART



- GENERAL NOTES
- HOUSING TO BE PAINTED PER CVI SPEC. 8434-13-1059 (EXTERIOR TO BE PRIME COATED ONLY - FINISH PAINT BY OTHERS)
  - ITEM NO. 3,4,7,8 SHIPPED SEPARATE FROM UNIT
  - TOTAL OPERATING WT 2300 LBS EST, SHIPPING WT OF HEAVIEST ITEM 1400 LBS EST.
  - SEE CVI O & M MANUAL FOR INSTALLATION OF FILTERS & COMPONENTS.
  - HOUSING DESIGN PRESSURE -0.6 PSIG TO +1 PSIG
  - DESIGN AIR FLOW 30,000 CFM
  - CUSTOMER TO MAKE FINAL INSPECTION TO THIS DRAWING.

FRONT ELEVATION  
 2004-1 SHOWN (CUST. EQUIP. NO. 1M38-0001)  
 2004-2 OPPOSITE & NOTED (CUST. EQUIP. NO. 1M38-0002)

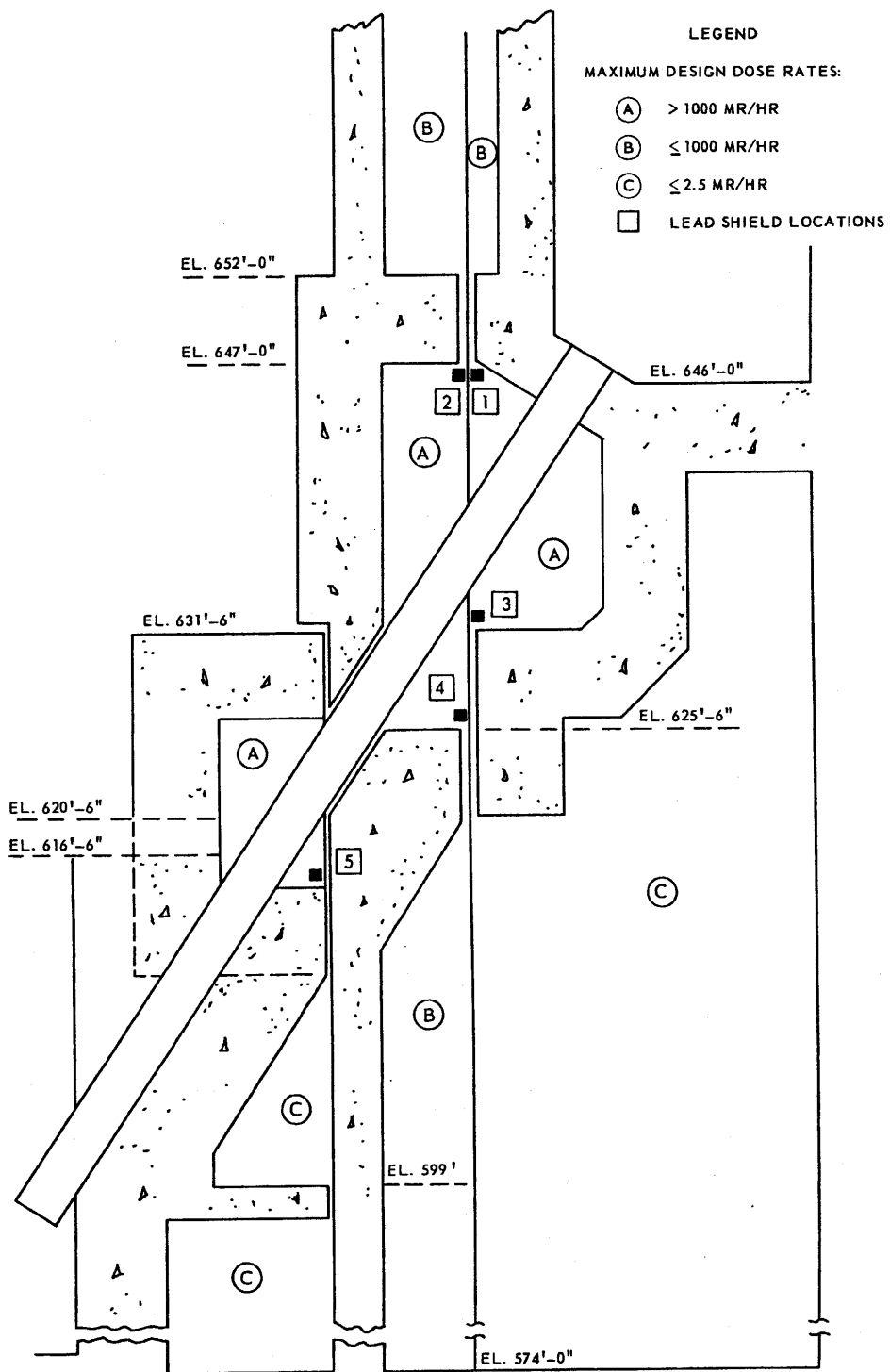


(Rev. 12 1/03)

**PERRY NUCLEAR POWER PLANT**

General Arrangement -  
 Auxiliary Building Exhaust Plenum

Figure 12.3-20



(Rev. 12 1/03)



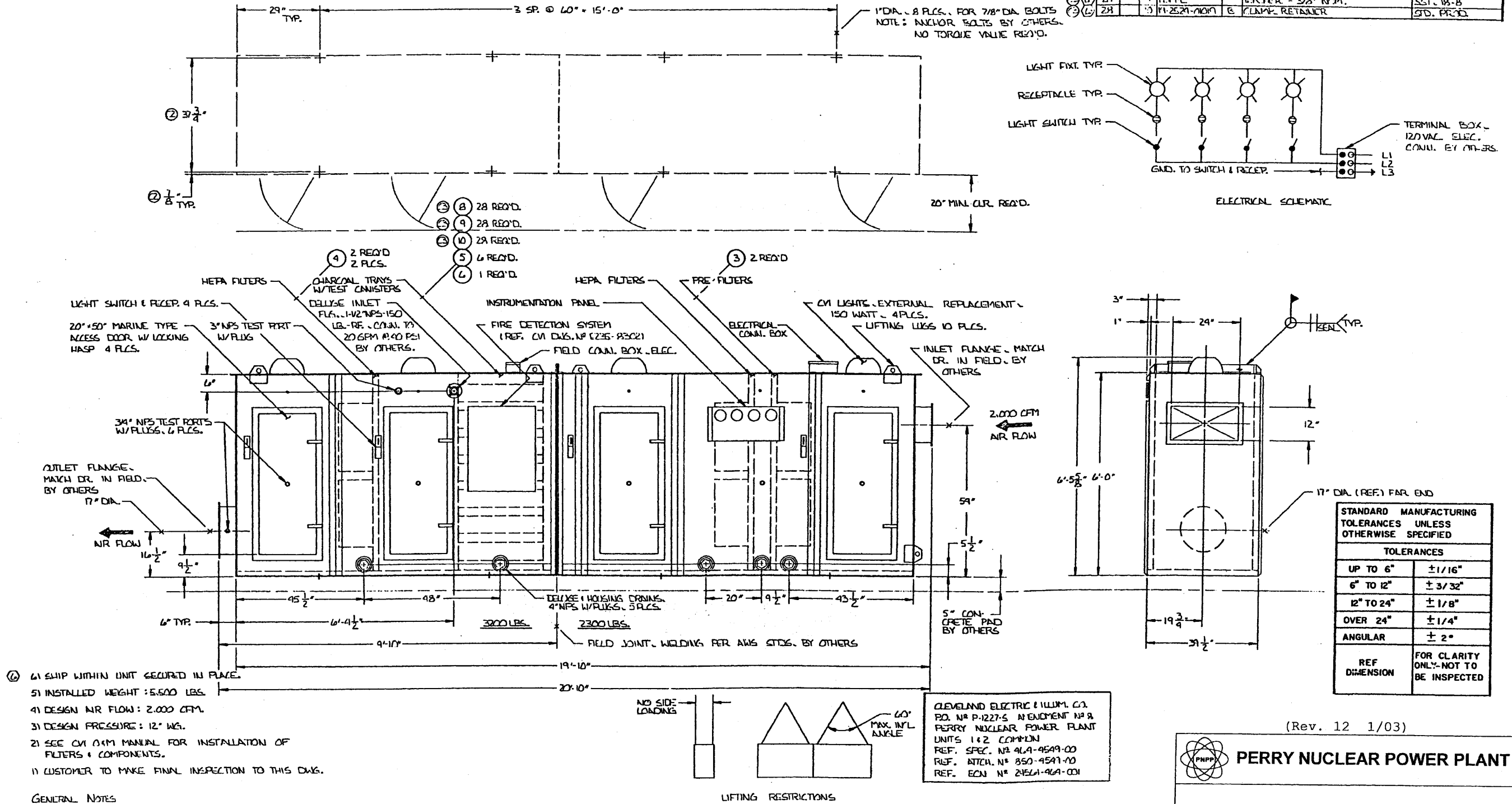
**PERRY NUCLEAR POWER PLANT**

Inclined Fuel Transfer  
Tube Radiation Shielding

Figure 12.3-21

REVISIONS						
CHG.	DATE	BY	CHKD.	APPR.	REVD.	DESCRIPTION
A	8/27/75	EPH				REVISED PER MECHANICAL DESIGN & SEISMIC.
B	8/29/75	EPH				REVISED PER MECHANICAL DESIGN FOR CLUT.
C	7/23/76	EPH				REVISED PER MECHANICAL DESIGN TO 7/23/76 W.C. 1 & 2. 3/1-3/4 INCS. 3/1-3/4" STADD. BY NP 3, 9, 10

-MOD-		BILL OF MATERIAL			
ITEM	PART NUMBER	QTY	DESCRIPTION	MATERIAL	
1	1235-7521-1	1	FINAL ASSEMBLY	SEE PART 1235-7521-1	
2	3	2	PRE FILTER N° 77A-7-02-03 NL		
4	4	4	HEPA FILTER N° 007-0-02-03 NU		
6	5	1	CARBON TRAY		
1	2	6	CARBON TRAY WITH TEST CANISTERS		
23	3	3	NUT - HEX 3/8" DIA	SI-60%	
28	7	7	WASHER - 3/8" DIA	SGT. 18-B	
28	11-2521-1001	6	CLAMP RETAINER	STD. PROD.	



- GENERAL NOTES
- 1) CUSTOMER TO MAKE FINAL INSPECTION TO THIS DWG.
  - 2) SEE CM O&M MANUAL FOR INSTALLATION OF FILTERS & COMPONENTS.
  - 3) DESIGN PRESSURE: 12" W.G.
  - 4) DESIGN AIR FLOW: 2,000 CFM.
  - 5) INSTALLED WEIGHT: 5,500 LBS.
  - 6) SHIP WITHIN UNIT SECURED IN PLACE.

CLEVELAND ELECTRIC & MFG. CO.  
 P.O. NO. P-1227-S AMENDMENT NO. 8  
 PERRY NUCLEAR POWER PLANT  
 UNITS 1 & 2 COMMON  
 REF. SPEC. NO. 41A-4549-00  
 REF. ATCH. NO. 850-4541-10  
 REF. ECN NO. 21561-46A-001

STANDARD MANUFACTURING TOLERANCES UNLESS OTHERWISE SPECIFIED	
TOLERANCES	
UP TO 6"	±1/16"
6" TO 12"	±3/32"
12" TO 24"	±1/8"
OVER 24"	±1/4"
ANGULAR	± 2°
REF DIMENSION	FOR CLARITY ONLY - NOT TO BE INSPECTED

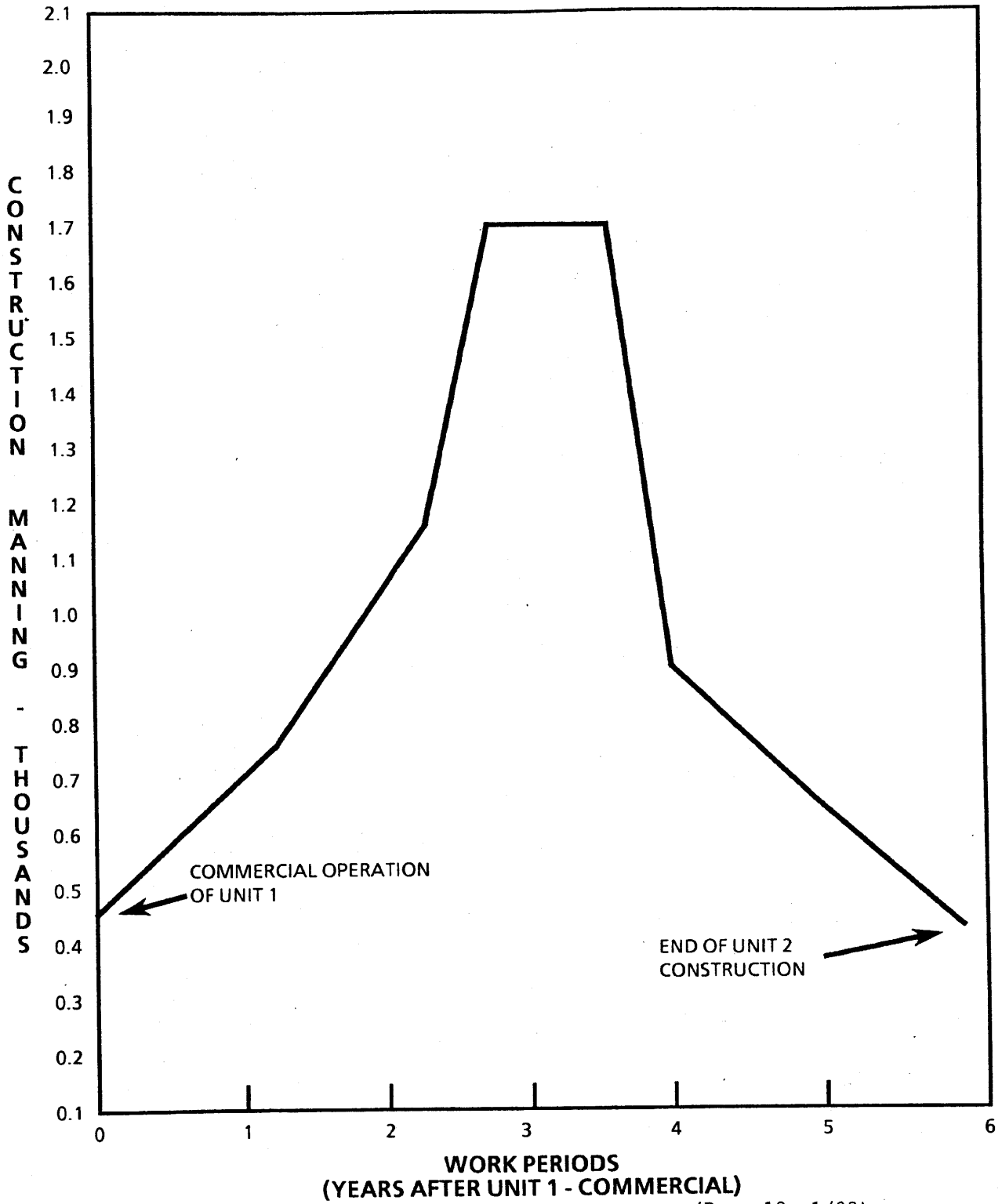
(Rev. 12 1/03)

**PERRY NUCLEAR POWER PLANT**

Intermediate Building Tool Storage/Decon Area Exhaust

Figure 12.3-22





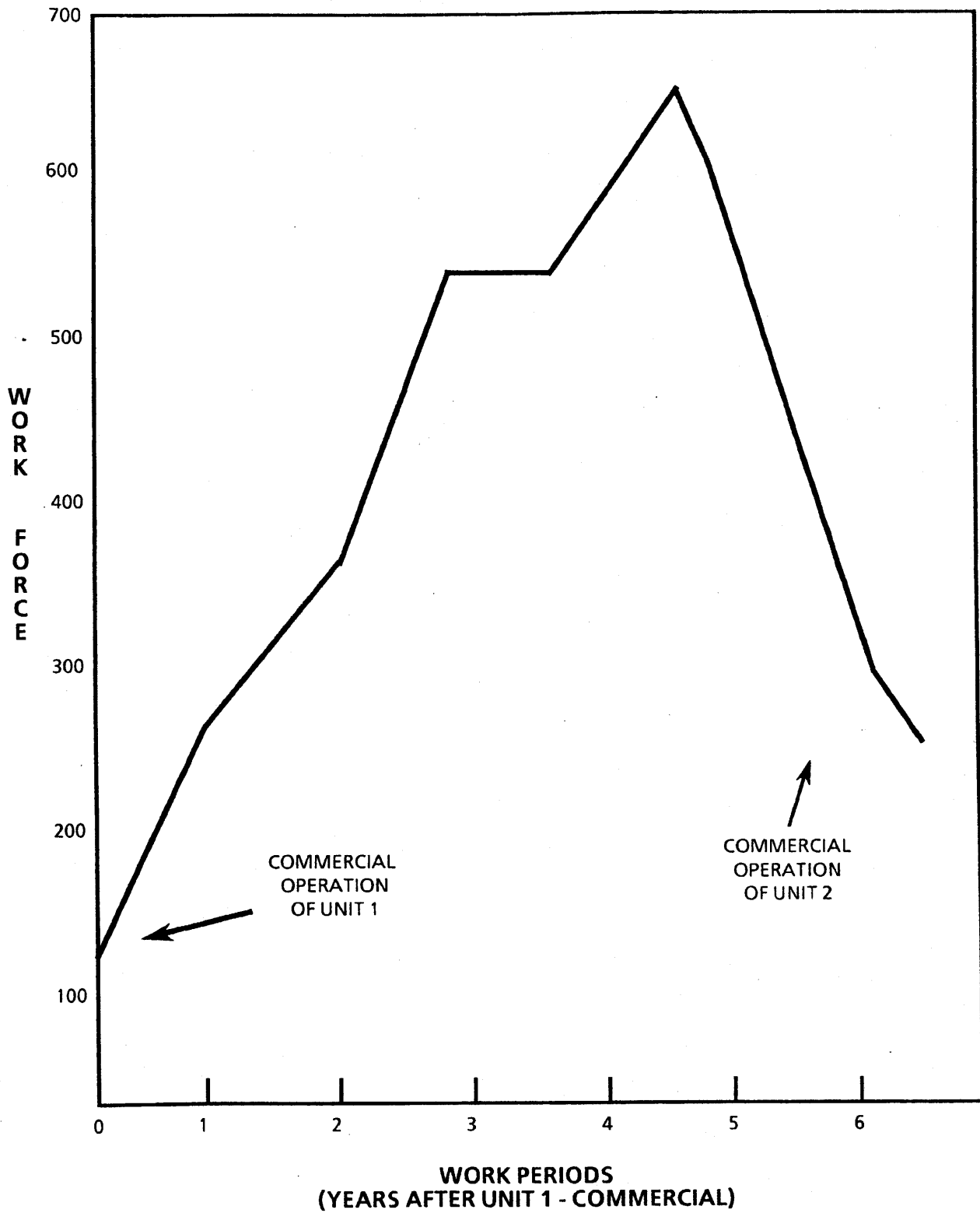
(Rev. 12 1/03)



**PERRY NUCLEAR POWER PLANT**

Engineering and Construction  
Schedule

Figure 12.4-1



(Rev. 12 1/03)



**PERRY NUCLEAR POWER PLANT**

Site Organization Manning  
(Without Perry Plant Department)

Figure 12.4-2

Removed in Accordance with RIS 2015-17

PERRY NUCLEAR POWER PLANT  
10 CENTER RD., PERRY, OHIO 44081

POST-ACCIDENT RADIATION ZONES,  
PLAN A ABOVE ELEVS. 568'-6", 574'-10",  
577'-6" AND 580'-6", PLANT COMPLEX  
FIGURE 12.6-1  
(DWG. E-013-0003-00000)

Removed in Accordance with RIS 2015-17

PERRY NUCLEAR POWER PLANT  
10 CENTER RD., PERRY, OHIO 44081

POST-ACCIDENT RADIATION ZONES,  
PLAN B ABOVE ELEVS. 593'-6",  
599'-0", 600'-6", 602'-6", AND 605'-6",  
PLANT COMPLEX  
FIGURE 12.6-2  
(DWG. E-013-0004-00000)

Removed in Accordance with RIS 2015-17

PERRY NUCLEAR POWER PLANT  
10 CENTER RD., PERRY, OHIO 44081

POST-ACCIDENT RADIATION ZONES,  
PLAN C ABOVE ELEVS. 620'-6",  
623'-6" AND 624'-6", PLANT COMPLEX  
FIGURE 12.6-3  
(DWG. E-013-0005-00000)

Removed in Accordance with RIS 2015-17

PERRY NUCLEAR POWER PLANT  
10 CENTER RD., PERRY, OHIO 44081

POST-ACCIDENT RADIATION ZONES,  
PLAN D ABOVE ELEVS. 638'-6", 642'-0"  
AND 647'-6", PLANT COMPLEX  
FIGURE 12.6-4  
(DWG. E-013-0006-00000)

Removed in Accordance with RIS 2015-17

PERRY NUCLEAR POWER PLANT  
10 CENTER RD., PERRY, OHIO 44081

POST-ACCIDENT RADIATION ZONES,  
PLAN E ABOVE ELEVS. 652'-0"  
AND EL. 654'-6", PLANT COMPLEX  
FIGURE 12.6-5  
(DWG. E-013-0007-00000)

Removed in Accordance with RIS 2015-17

PERRY NUCLEAR POWER PLANT  
10 CENTER RD., PERRY, OHIO 44081

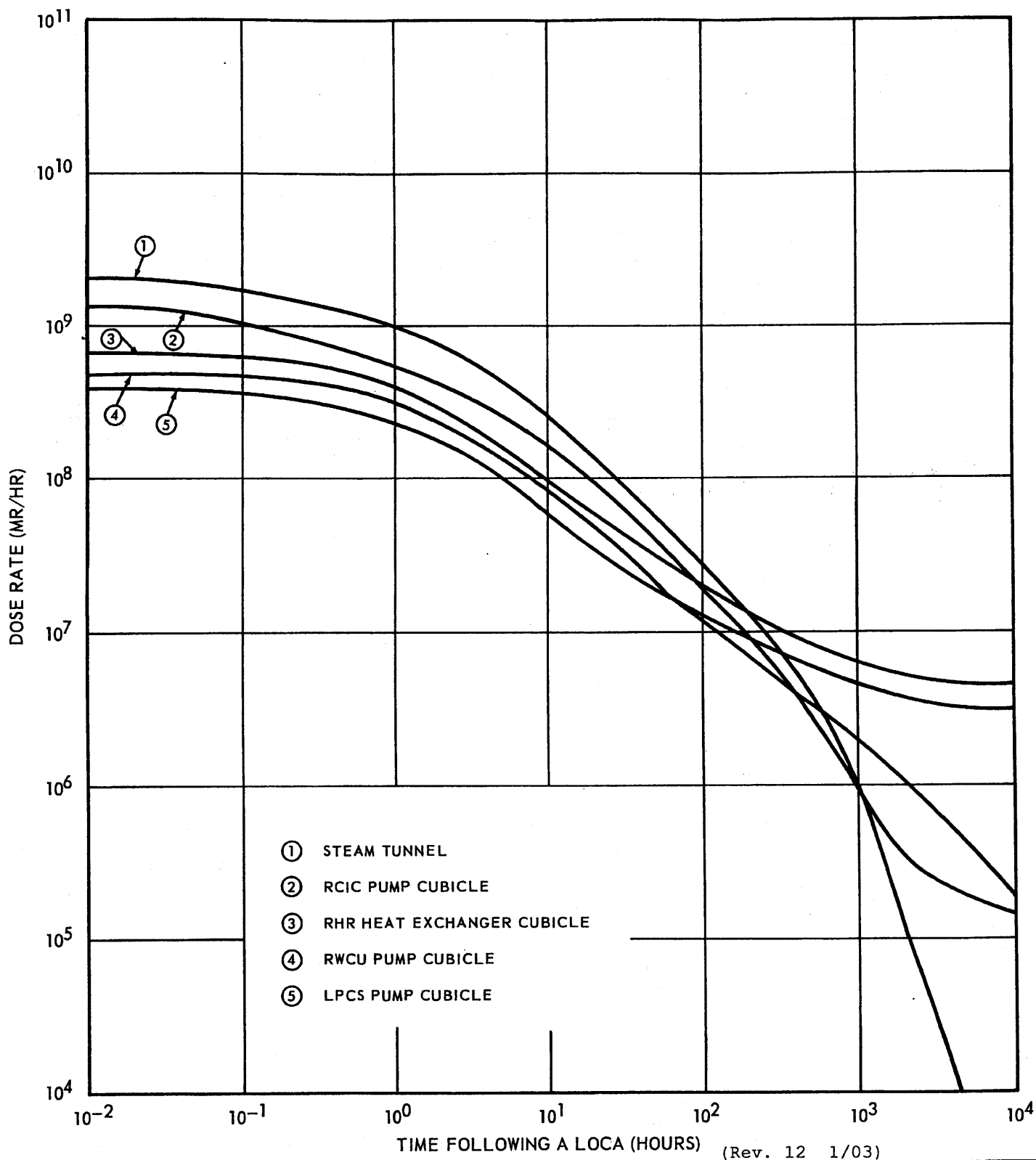
POST-ACCIDENT RADIATION ZONES,  
PLAN F ABOVE ELEVS. 664'-7",  
665'-0", AND 670'-6", PLANT COMPLEX  
FIGURE 12.6-6  
(DWG. E-013-0008-00000)



Removed in Accordance with RIS 2015-17

PERRY NUCLEAR POWER PLANT  
10 CENTER RD., PERRY, OHIO 44081

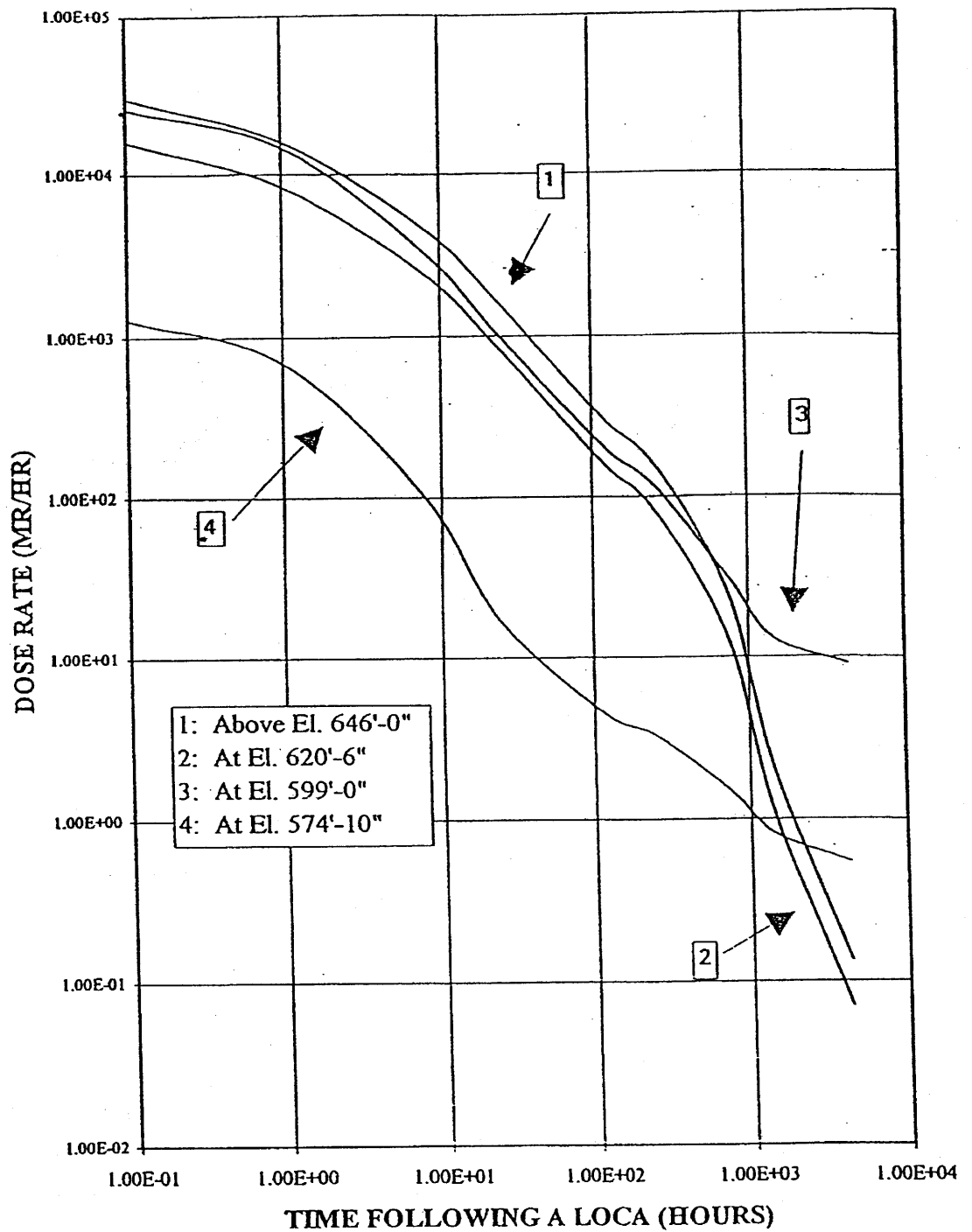
POST-ACCIDENT RADIATION ZONE,  
PLAN G ABOVE ELEVS. 689'-6",  
PLANT COMPLEX  
FIGURE 12.6-7  
(DWG. E-013-0009-00000)



**PERRY NUCLEAR POWER PLANT**

Auxiliary Building Dose Rates  
 Versus Time Following a LOCA

Figure 12.6-8



(Rev. 13 12/03)



**PERRY NUCLEAR POWER PLANT**

Intermediate Building Dose  
 Rates Versus Time Following a LOCA

Figure 12.6-9