

Table listing various equipment items categorized by system number and name. Includes systems like Reactor Radiation Monitoring, Fuel Pool Cooling, Reactor Protection, and Waste Water Treatment. Each entry includes a part number and a brief description.

PERRY NUCLEAR POWER PLANT
10 CENTER RD., PERRY, OHIO 44081
EQUIPMENT LIST
FIGURE 1.2-1 SHEET 1 OF 3
(DWG. 013-0018-00000)

Removed in Accordance with RIS 2015-17

PERRY NUCLEAR POWER PLANT
10 CENTER RD., PERRY, OHIO 44081

FINAL PLANT LAYOUT,
PLOT PLAN, PLANT AREA
FIGURE 1.2-2
(DWG. E-036-0022-00000)

Removed in Accordance with RIS 2015-17

PERRY NUCLEAR POWER PLANT
10 CENTER RD., PERRY, OHIO 44081

FINAL PLANT LAYOUT, PLAN A ABOVE
ELEVS. 568'-6", 574'-10", 577'-6"
AND 580'-6", PLANT COMPLEX
FIGURE 1.2-3
(DWG. E-013-0003-00000)

Removed in Accordance with RIS 2015-17

PERRY NUCLEAR POWER PLANT
10 CENTER RD., PERRY, OHIO 44081

FINAL PLANT LAYOUT, PLAN B ABOVE
ELEVS. 593'-6", 599'-0", 600'-6",
602'-6", AND 605'-6", PLANT COMPLEX
FIGURE 1.2-4
(DWG. E-013-0004-00000)

Removed in Accordance with RIS 2015-17

PERRY NUCLEAR POWER PLANT
10 CENTER RD., PERRY, OHIO 44081

FINAL PLANT LAYOUT, PLAN C ABOVE
ELEVS. 620'-6", 623'-6" AND
624'-6", PLANT COMPLEX
FIGURE 1.2-5
(DWG. E-013-0005-00000)

FIGURE REDACTED PER RIS 2015-17

PERRY NUCLEAR POWER PLANT
10 CENTER RD., PERRY, OHIO 44081

FINAL PLANT LAYOUT, PLAN D
ABOVE ELEVS. 638'-6", 642'-0"
AND 647'-6", PLANT COMPLEX
FIGURE 1.2-6
(DWG. E-013-0006-00000)

Removed in Accordance with RIS 2015-17

PERRY NUCLEAR POWER PLANT
10 CENTER RD., PERRY, OHIO 44081

PLANT LAYOUT PLAN E ABOVE
ELEVS. 652'-0" AND EL. 654'-6",
PLANT COMPLEX
FIGURE 1.2-7
(DWG. E-013-0007-00000)

Removed in Accordance with RIS 2015-17

PERRY NUCLEAR POWER PLANT
10 CENTER RD., PERRY, OHIO 44081

FINAL PLANT LAYOUT, PLAN F ABOVE
ELEVS. 664'-7", 665'-0", AND
670'-6", PLANT COMPLEX
FIGURE 1.2-8
(DWG. E-013-0008-00000)

Removed in Accordance with RIS 2015-17

PERRY NUCLEAR POWER PLANT
10 CENTER RD., PERRY, OHIO 44081

FINAL PLANT LAYOUT, PLAN G ABOVE
ELEVS. 689'-6", PLANT COMPLEX
FIGURE 1.2-9
(DWG. E-013-0009-00000)

Removed in Accordance with RIS 2015-17

PERRY NUCLEAR POWER PLANT
10 CENTER RD., PERRY, OHIO 44081

FINAL PLANT LAYOUT,
PLAN H ROOF PLAN
FIGURE 1.2-10
(DWG. E-013-0010-00000)

Removed in Accordance with RIS 2015-17

PERRY NUCLEAR POWER PLANT
10 CENTER RD., PERRY, OHIO 44081

FINAL PLANT LAYOUT,
SECTION A-A
FIGURE 1.2-11
(DWG. E-013-0011-00000)

Removed in Accordance with RIS 2015-17

PERRY NUCLEAR POWER PLANT
10 CENTER RD., PERRY, OHIO 44081

FINAL PLANT LAYOUT,
SECTION B-B
FIGURE 1.2-12
(DWG. E-013-0012-00000)

Removed in Accordance with RIS 2015-17

PERRY NUCLEAR POWER PLANT
10 CENTER RD., PERRY, OHIO 44081

FINAL PLANT LAYOUT,
SECTION C-C
FIGURE 1.2-13
(DWG. E-013-0013-00000)

Removed in Accordance with RIS 2015-17

PERRY NUCLEAR POWER PLANT
10 CENTER RD., PERRY, OHIO 44081

FINAL PLANT LAYOUT, CIRCULATING
WATER PUMPHOUSE, PLANS AND ELEVATIONS
FIGURE 1.2-14 (SHEET 1 OF 2)
(DWG. E-015-0016-00000)

Removed in Accordance with RIS 2015-17

PERRY NUCLEAR POWER PLANT
10 CENTER RD., PERRY, OHIO 44081

FINAL PLANT LAYOUT, CIRCULATING
WATER PUMPHOUSE, PLANS AND ELEVATIONS
FIGURE 1.2-14 (SHEET 2 OF 2)
(DWG. E-015-0017-00000)

Removed in Accordance with RIS 2015-17

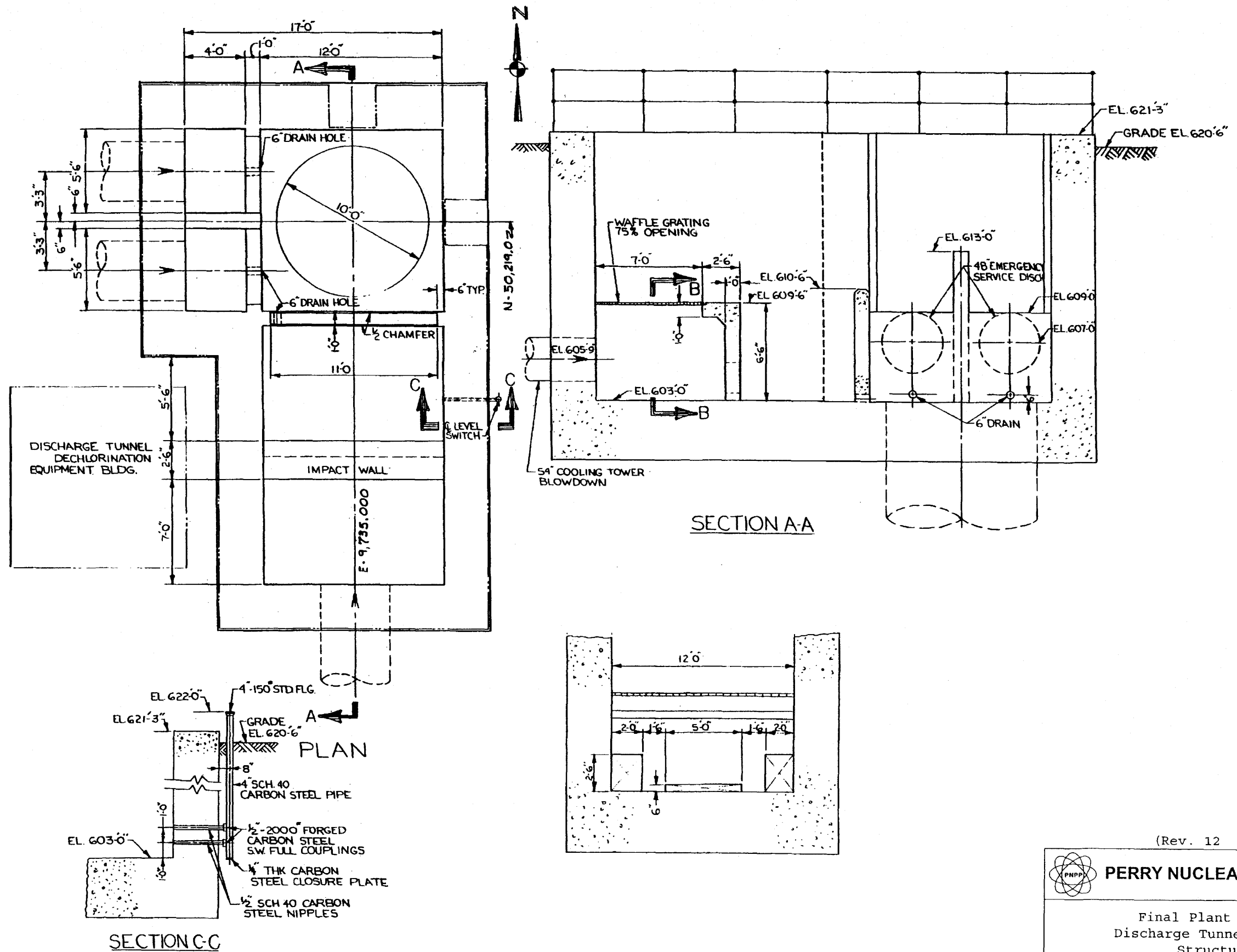
PERRY NUCLEAR POWER PLANT
10 CENTER RD., PERRY, OHIO 44081

FINAL PLANT LAYOUT,
SERVICE WATER PUMPHOUSE
FIGURE 1.2-15
(DWG. E-015-0015-00000)

Removed in Accordance with RIS 2015-17

PERRY NUCLEAR POWER PLANT
10 CENTER RD., PERRY, OHIO 44081

FINAL PLANT LAYOUT,
EMERGENCY SERVICE WATER
PUMPHOUSE PLANS AND ELEVATIONS
FIGURE 1.2-16
(DWG. E-015-0002-00000)

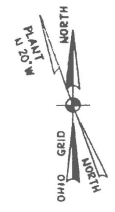
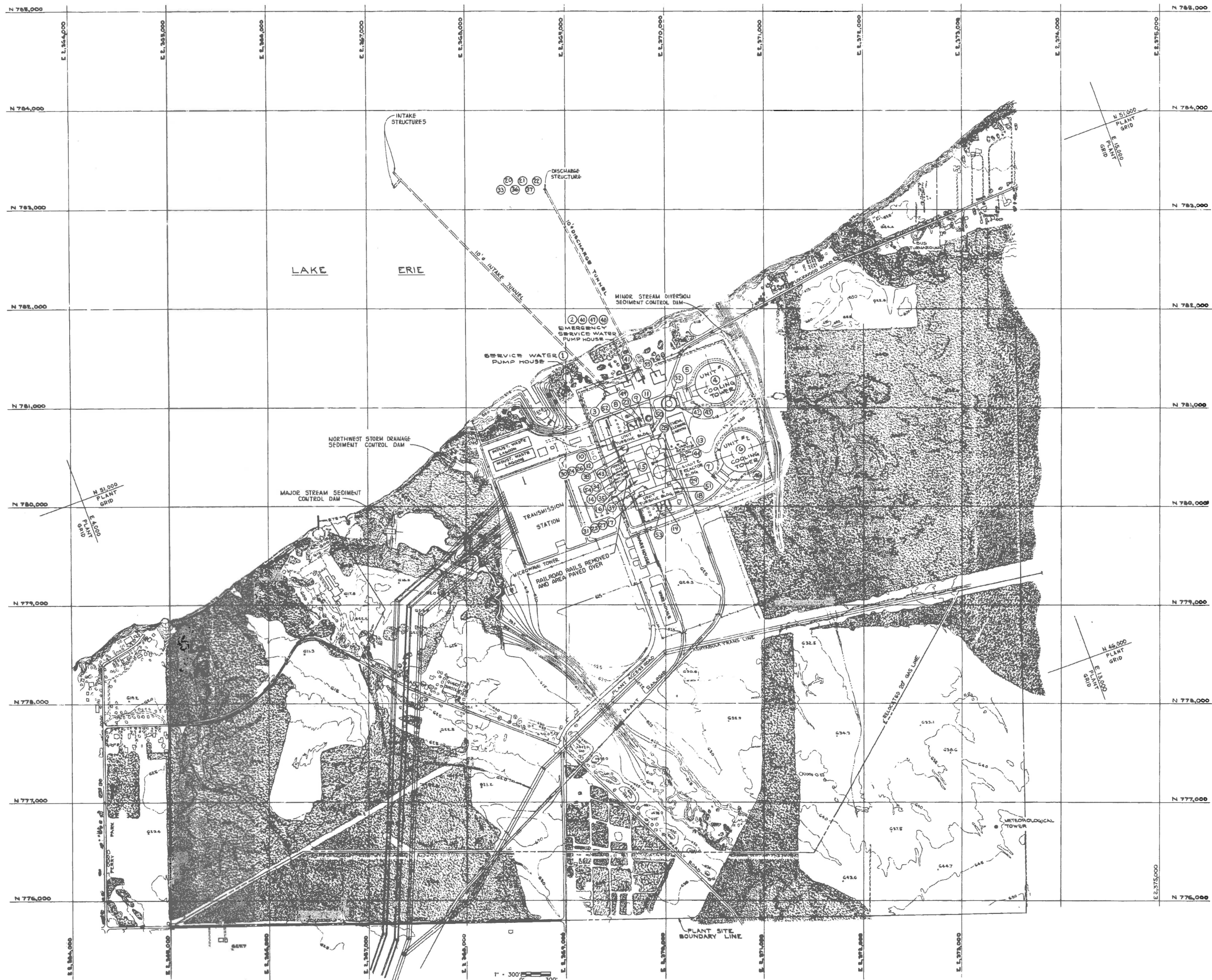


(Rev. 12 1/03)

PERRY NUCLEAR POWER PLANT

Final Plant Layout,
 Discharge Tunnel Entrance
 Structures

Figure 1.2-17
 (Dwg. B-015-003)



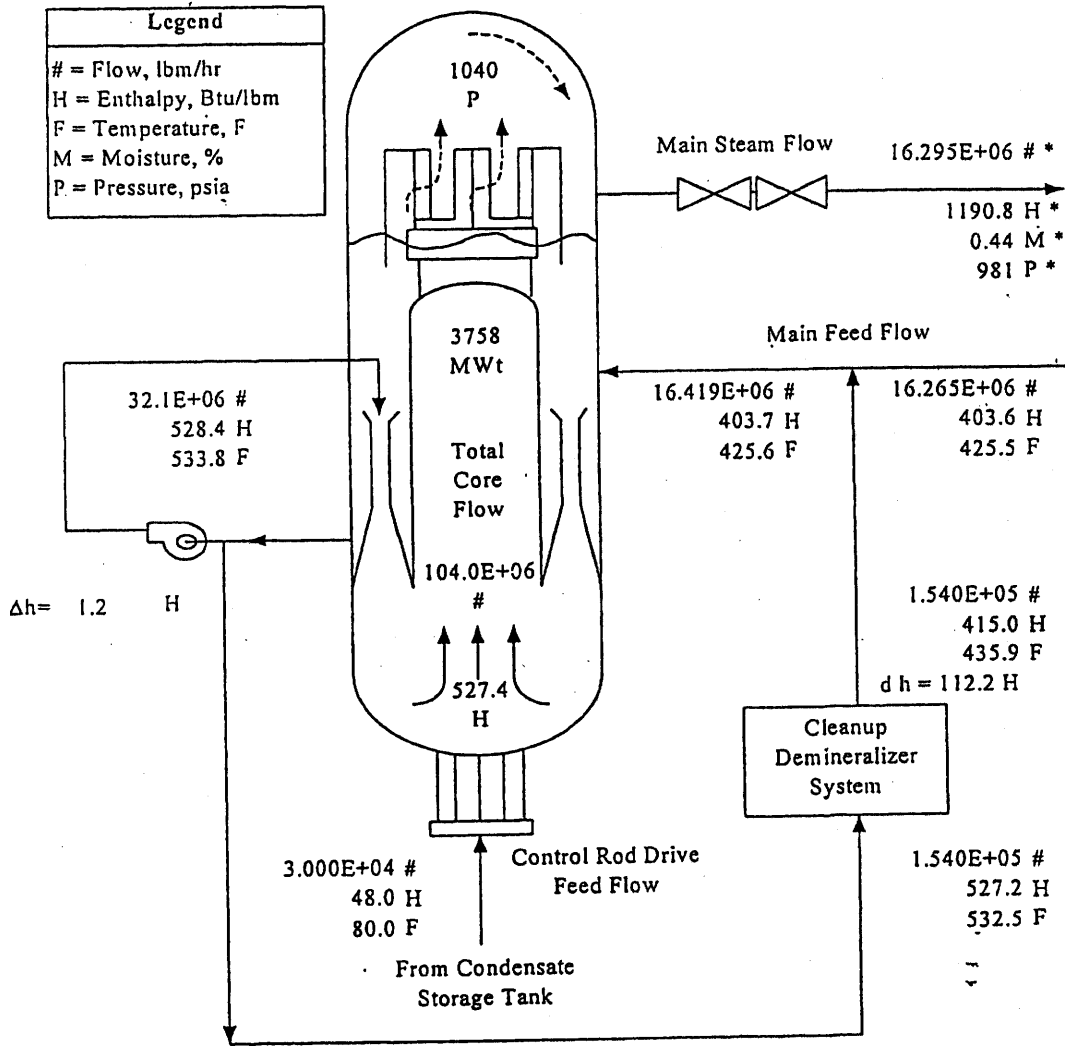
ITEM NO.	DESCRIPTION	RELEASE ELEVATION
1.	CONSTRUCTION SANITARY SEWAGE EFFLUENT	576'-0"
2.	EMERGENCY SERVICE WATER PUMP HOUSE VENT, EXHAUST	588'-5"
3.	SERVICE WATER PUMP HOUSE VENT, EXHAUST	828'-0"
4.	COOLING TOWER AIR OUTLET - UNIT 1	1158'-0"
5.	CIRCULATING WATER PUMP HOUSE VENT, EXHAUST - UNIT 1	888'-0"
6.	COOLING TOWER AIR OUTLET - UNIT 2	1158'-0"
7.	CIRCULATING WATER PUMP HOUSE VENT, EXHAUST - UNIT 2	888'-0"
8.	TURBINE BUILDING AND HEATER BAY EXHAUST - UNIT 1	722'-0"
9.	AUXILIARY BOILER BUILDING VENT, EXHAUST	847'-0"
10.	WATER TREATMENT BUILDING VENT, EXHAUST	843'-2" & 888'-2"
11.	LOW OIL STORAGE AREA VENT, EXHAUST - UNIT 1	838'-2"
12.	OFF-GAS AND TURBINE BUILDINGS VENT EXHAUST - UNIT 1	723'-0"
13.	PLANT VENT - UNIT 1 AND UNIT 2	750'-0"
14.	DIESEL GENERATORS BUILDING VENT, EXHAUST	829'-11"
15.	CONTROL COMPLEX VENT, EXHAUST	807'-4"
16.	SERVICE BUILDING VENT, EXHAUST	871'-5"
17.	OFF-GAS AND TURBINE BUILDINGS VENT EXHAUST - UNIT 2	723'-0"
18.	LOW OIL STORAGE AREA VENT, EXHAUST - UNIT 2	806'-2"
19.	TURBINE BUILDING AND HEATER BAY EXHAUST - UNIT 2	722'-0"
20.	COOLING TOWER BLOWDOWN	554'-4"
21.	SERVICE WATER DISCHARGE	554'-4"
22.	EMERGENCY SERVICE WATER DISCHARGE	554'-4"
23.	AUXILIARY BOILER FLUE GAS VENT, EXHAUST (2)	721'-8"
24.	START-UP CONDENSER EVACUATION EXHAUST - UNIT 1	723'-0"
25.	START-UP CONDENSER EVACUATION EXHAUST - UNIT 2	723'-0"
26.	OFF-GAS RELEASE - UNIT 1	723'-0"
27.	OFF-GAS RELEASE - UNIT 2	723'-0"
28.	EMERGENCY SERVICE WATER OVERFLOW - UNIT 1	823'-0"
29.	EMERGENCY SERVICE WATER OVERFLOW - UNIT 2	823'-0"
30.	STEAM PACKING EXHAUST DISCHARGE - UNIT 1	723'-0"
31.	STEAM PACKING EXHAUST DISCHARGE - UNIT 2	723'-0"
32.	FUEL OIL STORAGE TANK VENT	881'-0"
33.	LIQUID WASTE DISCHARGE	554'-4"
34.	EMERGENCY DIESEL GENERATOR FUEL OIL TANK VENTS (12)	854'-0" & 881'-0"
35.	EMERGENCY DIESEL GENERATORS COMBUSTION EXHAUST GASES (8)	881'-0"
36.	CHEMICAL CLEANING TREATMENT WASTE	554'-4"
37.	SANITARY SEWAGE EFFLUENT	554'-4"
38.	TURBINE POWER COMPLEX BATTERY ROOM EXHAUST - UNIT 1	881'-0"
39.	TURBINE POWER COMPLEX BATTERY ROOM EXHAUST - UNIT 2	881'-0"
40.	DIESEL DRIVEN FIRE PUMP AREA EXHAUST	828'-0"
41.	DISCHARGE TUNNEL DECONTAMINATION EQUIPMENT BUILDING EXHAUST	854'-2"
42.	FUEL OIL PUMP HOUSE VENT, EXHAUST	827'-0"
43.	RAWWASTE BUILDING CHEMIST STORAGE AREA VENT, EXHAUST	884'-0"
44.	HYPOCHLORITE GENERATION BUILDING AREA VENT, EXHAUST	854'-2"
45.	COOLING TOWER ACID ADDITION STORAGE BUILDING VENT, EXHAUST - UNIT 1	658'-0"
46.	COOLING TOWER ACID ADDITION STORAGE BUILDING VENT, EXHAUST - UNIT 2	658'-0"
47.	DIESEL DRIVEN FIRE PUMP ENGINE EXHAUST	828'-0"
48.	DIESEL DRIVEN FIRE PUMP FUEL OIL TANK VENT	881'-0"
49.	AUXILIARY BOILER SAFETY VALVE ESCAPES, AUXILIARY BOILER HEATING HEATER ESCAPE AND VENT AND AUXILIARY BOILER BLOWDOWN TANK VENT	881'-0"
50.	MAIN TURBINE LOW OIL RESERVOIR VENT - UNIT 1	718'-0"
51.	MAIN TURBINE LOW OIL RESERVOIR VENT - UNIT 2	718'-0"
52.	MAIN FEEDWATER PUMP TURBINE OIL RESERVOIR VENT - UNIT 1 (2)	881'-11"
53.	MAIN FEEDWATER PUMP TURBINE OIL RESERVOIR VENT - UNIT 2 (2)	881'-11"
54.	EMERGENCY DIESEL GENERATION LOW OIL SUMP AND COMBUSTION VENTS	881'-4"
55.	LOW LEVEL WASTEWATER STORAGE AND PROCESSING FACILITY VENT EXHAUST	658'-0"

NOTES: 1. COORDINATES SHOWN ON THIS DRAWING ARE BASED ON THE OHIO STATE COORDINATE SYSTEM.
 2. REACTOR COORDINATES:

	OHIO GRID	PLANT GRID
UNIT 1	N780,545	N48,486
	E1,288,879	E8,670
UNIT 2	N780,346,725	N48,255
	E1,288,847,188	E8,570

3. ALL BACKGROUND CONTOURS SUPPLIED BY AERIAL SURVEYS, INC.

(REV. 21 10/2019)
PERRY NUCLEAR POWER PLANT
 10 CENTER RD., PERRY, OHIO 44081
 FINAL PLANT LAYOUT,
 PLOT PLAN RELEASE POINT DESIGNATION
 FIGURE 1.2-18
 (DWG. D-036-0011-00000)



* Conditions at upstream side of TSV

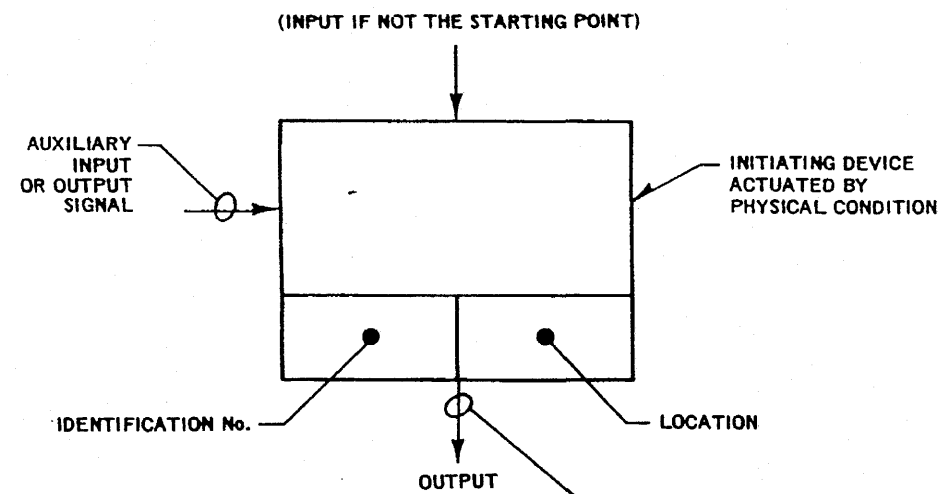
Core Thermal Power	3758.0
Pump Heating	10.7
Cleanup Losses	-5.1
Other System Losses	-1.1
Turbine Cycle Use	3762.5 MWt

(Rev. 12 1/03)

PERRY NUCLEAR POWER PLANT

Heat Balance at Rated Power

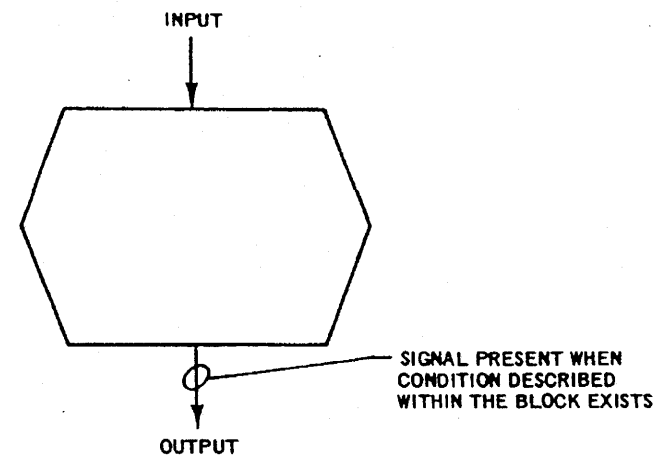
Figure 1.2-19



COMMAND BLOCK

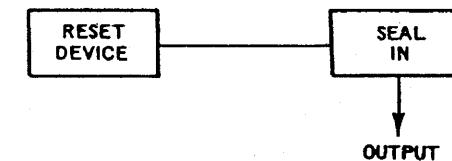
THIS BLOCK CAN REPRESENT A SWITCH, VALVE, PROBE, TIMER OR TRIP CIRCUIT. IT IS NORMALLY THE STARTING POINT OF A FUNCTIONAL SEQUENCE WITH AN OUTPUT ONLY, BUT CAN HAVE INPUT AND AUX. INPUT DEPENDING ON THE TYPE OF DEVICE. THE SAME DEVICE MAY HAVE A NUMBER OF OUTPUTS, BUT EACH FUNCTIONAL SEQUENCE INITIATED SHALL BE SHOWN BY AN INDIVIDUAL BLOCK SHOWING THE SAME IDENTIFICATION NUMBER

SIGNAL IS PRESENT WHEN CONDITION IS DESCRIBED WITHIN THE BLOCK EXISTS



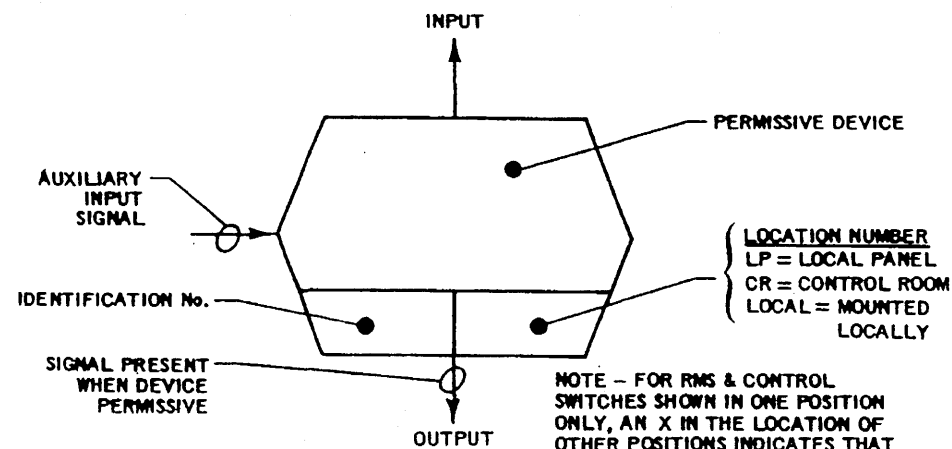
PERMISSIVE E CONDITION BLOCK

WHERE THE PERMISSIVE IS A GENERAL CONDITION AND NOT IDENTIFIED WITH A SINGLE DEVICE THE OUTPUTS ENCLOSURE ONLY IS SHOWN.



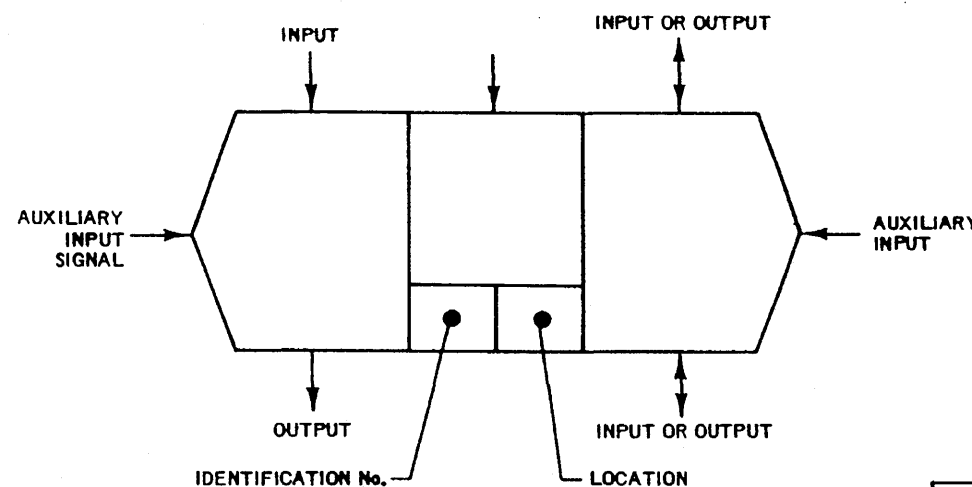
SEAL-IN BLOCK

A SEAL-IN OR LATCHING BLOCK'S FUNCTION IS TO MAINTAIN AN INPUT SIGNAL TO A DEVICE ONCE THE DEVICE HAS BEEN ACTUATED. RESETTING OR INHIBITING A SEAL-IN MAY BE EITHER EXPRESSED OR IMPLIED. IF IMPLIED, THE SEAL-IN WILL BE RESET OR INHIBITED BY INTERRUPTING THE SIGNAL TO THE DEVICE DOWNSTREAM FROM THE POINT WHERE SEAL-IN IS INDICATED. A SEAL-IN SHOWN WITHOUT A RESET DEVICE IMPLIES THAT THE RESET DEVICE IS PART OF, AND LOCATED ON THE NEAREST VALVE OR CONTACTOR. IN ALL OTHER CASES THE RESET DEVICE SHALL BE SHOWN IN CONJUNCTION WITH THE SEAL-IN.



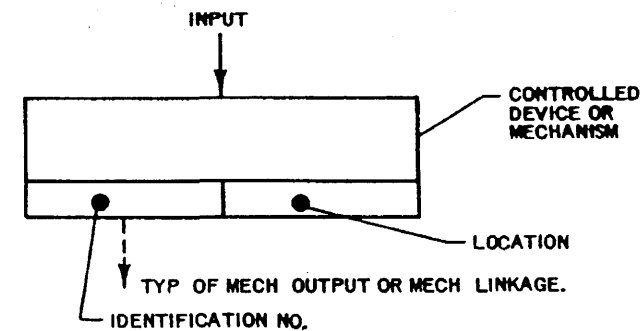
PERMISSIVE DEVICE BLOCK

THIS BLOCK DEFINES A PERMISSIVE FUNCTION WHICH MUST BE SATISFIED TO PERMIT THE SIGNAL FLOW TO PASS TO THE NEXT BLOCK. THIS BLOCK HAS INCOMING, OUTGOING AND MAY HAVE AUXILIARY SIGNALS. THE OUTPUT FROM THIS PERMISSIVE MAY BE SEALED IN



PERMISSIVE OPERATED BY OTHER DEVICES BLOCK

THIS BLOCK IS A PERMISSIVE OPERATED BY DEVICES SUCH AS VALVE OR PUMP SWITCHGEAR DESIGNATED IN THE INNER BLOCK. THIS COND OR DEVICE EFFECTS THE OPERATION OF THE FINAL DEVICE. IT HAS ELECT INPUTS, MECH INPUTS, AUX INPUTS (MECH OR ELEC) AND MECH OR ELECT OUTPUTS. THIS DEVICE IS NORMALLY A VALVE. THIS IS ALSO USED FOR OTHER INPUT/OUTPUT POWER SOURCES SUCH AS AIR OR HYDRAULIC. A SOLENOID PILOT VALVE FOR AN AIR OPERATED VALVE IS AN EXAMPLE OF THIS TYPE DEVICE.

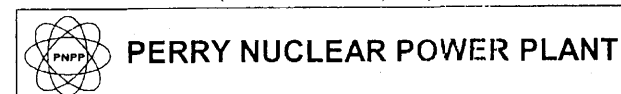


FINAL DEVICE BLOCK

THIS BLOCK CAN BE A RELAY, VALVE, ELECTRO-MECH SW. ETC. NORMALLY IT HAS ONLY INPUTS, BUT CAN HAVE MECH OUTPUTS OR POSITION SWITCH OUTPUTS.

LINES ASSOCIATED WITH LOGIC SYMBOLS	
	ELECT FLOW SIGNAL
	AUXILIARY SIGNAL SOURCE SUCH AS AIR OR HYDRAULIC
	MECHANICAL LINKAGE

(Rev. 12 1/03)

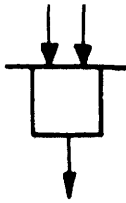


NSSS (GE) Logic Symbols Used on Functional Control Diagrams

Figure 1.2-21

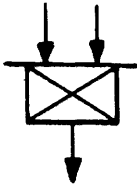
SYMBOL

FUNCTION



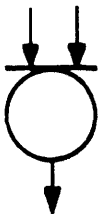
AND:

A FUNCTION WHICH PRODUCES AN OUTPUT ONLY WHEN EVERY INPUT EXISTS.



NOT:

A FUNCTION WHICH PRODUCES AN OUTPUT IF ANY OF THE INPUTS DOES NOT EXIST.



OR:

A FUNCTION WHICH PRODUCES AN OUTPUT IF ANY ONE OF ITS INPUTS EXIST.



TIME DELAY

A FUNCTION WHICH PRODUCES AN OUTPUT FOLLOWING A TIME DELAY AFTER RECEIVING AN INPUT.



ADJUSTABLE TIME DELAY

A FUNCTION WHOSE OUTPUT IS DE-ENERGIZED FOLLOWING A TIME DELAY AFTER ITS INPUT IS DE-ENERGIZED.



LOGIC INFORMATION TRANSMISSION



ANALOG INFORMATION TRANSMISSION

(Rev. 12 1/03)

LOGIC SYMBOLS



PERRY NUCLEAR POWER PLANT

AE (GAI) Logic Symbols Used on Functional Diagrams

Figure 1.2-23