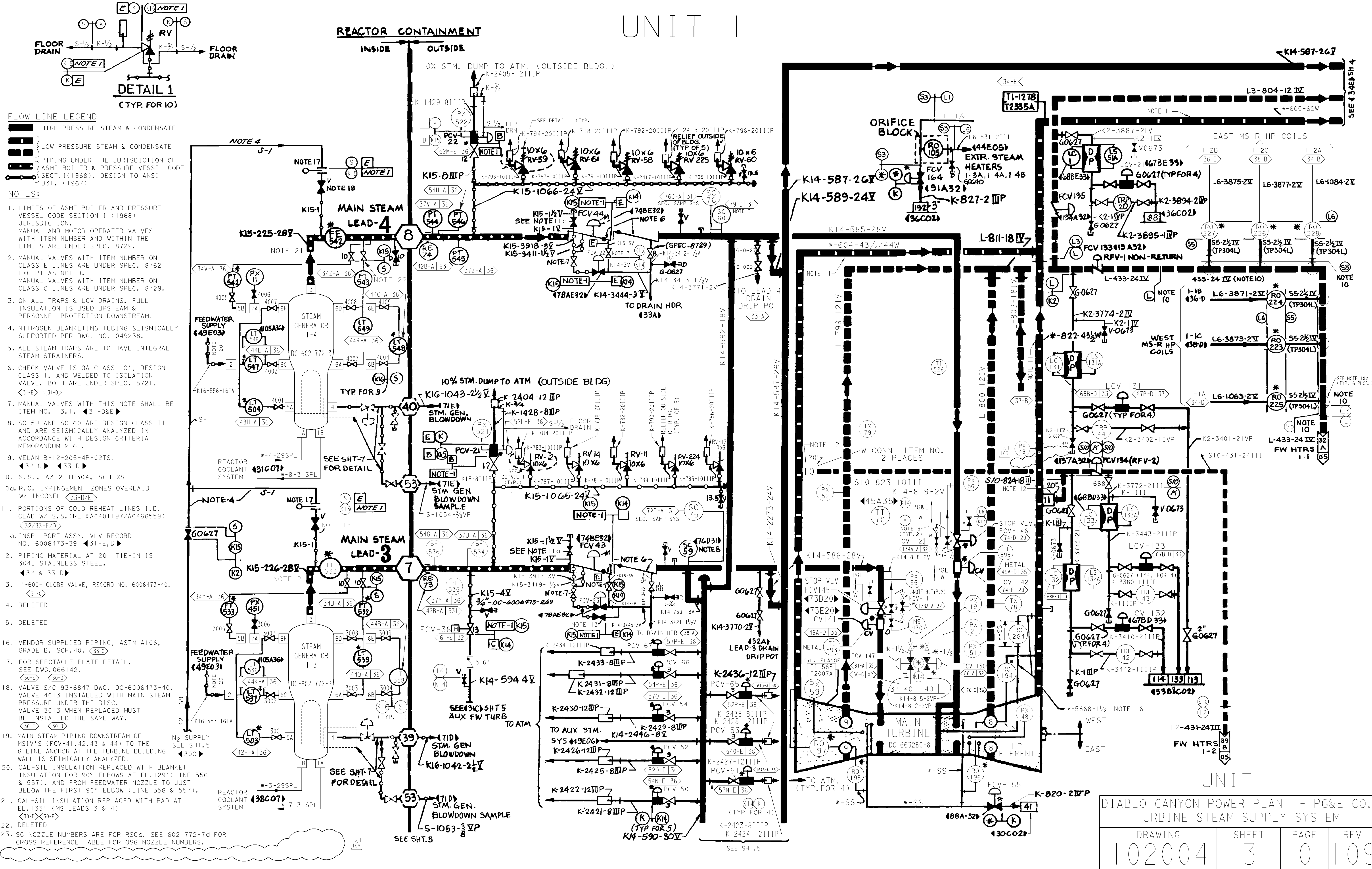


UNIT I



FLOW LINE LEGEND

- HIGH PRESSURE STEAM & CONDENSATE
- LOW PRESSURE STEAM & CONDENSATE
- PIPING UNDER THE JURISDICTION OF ASME BOILER & PRESSURE VESSEL CODE SECT. I (1968). DESIGN TO ANSI B31.1 (1967)

NOTES:

- LIMITS OF ASME BOILER AND PRESSURE VESSEL CODE SECTION I (1968) JURISDICTION. MANUAL AND MOTOR OPERATED VALVES WITH ITEM NUMBER AND WITHIN THE LIMITS ARE UNDER SPEC. 8729.
- MANUAL VALVES WITH ITEM NUMBER ON CLASS E LINES ARE UNDER SPEC. 8762 EXCEPT AS NOTED. MANUAL VALVES WITH ITEM NUMBER ON CLASS C LINES ARE UNDER SPEC. 8729.
- ON ALL TRAPS & LCV DRAINS, FULL INSULATION IS USED UPSTREAM & PERSONNEL PROTECTION DOWNSTREAM.
- NITROGEN BLANKETING TUBING SEISMICALLY SUPPORTED PER DWG. NO. 049238.
- ALL STEAM TRAPS ARE TO HAVE INTEGRAL STEAM STRAINERS.
- CHECK VALVE IS QA CLASS 'Q', DESIGN CLASS I, AND WELDED TO ISOLATION VALVE. BOTH ARE UNDER SPEC. 8721.
- MANUAL VALVES WITH THIS NOTE SHALL BE ITEM NO. 13.1. <31-D>E
- SC 59 AND SC 60 ARE DESIGN CLASS II AND ARE SEISMICALLY ANALYZED IN ACCORDANCE WITH DESIGN CRITERIA MEMORANDUM M-61.
- VELAN B-12-205-4P-02TS. <32-C> <33-D>
- S.S., A312 TP304, SCH XS
- R.O. IMPINGEMENT ZONES OVERLAID W/ INCONEL <33-D/E>
- PORTIONS OF COLD REHEAT LINES I.D. CLAD W/ S.S. (REF: A0401197/A0466559) <32/33-E/D>
- INSP. PORT ASSY. VLV RECORD NO. 6006473-39 <31-E,D>
- PIPING MATERIAL AT 20" TIE-IN IS 304L STAINLESS STEEL. <32 & 33-D>
- 1"-600" GLOBE VALVE, RECORD NO. 6006473-40. <31-C>
- DELETED
- DELETED
- VENDOR SUPPLIED PIPING, ASTM A106, GRADE B, SCH. 40. <33-C>
- FOR SPECTACLE PLATE DETAIL, SEE DWG. 066142. <30-E> <30-D>
- VALVE S/C 93-6847 DWG. DC-6006473-40. VALVE 4013 INSTALLED WITH MAIN STEAM PRESSURE UNDER THE DISC. VALVE 3013 WHEN REPLACED MUST BE INSTALLED THE SAME WAY. <30-E> <30-D>
- MAIN STEAM PIPING DOWNSTREAM OF MSIV'S (FCV-41, 42, 43 & 44) TO THE G-LINE ANCHOR AT THE TURBINE BUILDING WALL IS SEISMICALLY ANALYZED.
- CAL-SIL INSULATION REPLACED WITH BLANKET INSULATION FOR 90° ELBOWS AT EL. 129' (LINE 556 & 557), AND FROM FEEDWATER NOZZLE TO JUST BELOW THE FIRST 90° ELBOW (LINE 556 & 557).
- CAL-SIL INSULATION REPLACED WITH PAD AT EL. 133' (MS LEADS 3 & 4) <30-D> <30-E>
- DELETED
- SG NOZZLE NUMBERS ARE FOR SCS. SEE 6021772-7d FOR CROSS REFERENCE TABLE FOR OSB NOZZLE NUMBERS.

UNIT I

DIABLO CANYON POWER PLANT - PG&E CO.

TURBINE STEAM SUPPLY SYSTEM

DRAWING	SHEET	PAGE	REV
102004	3	0	109