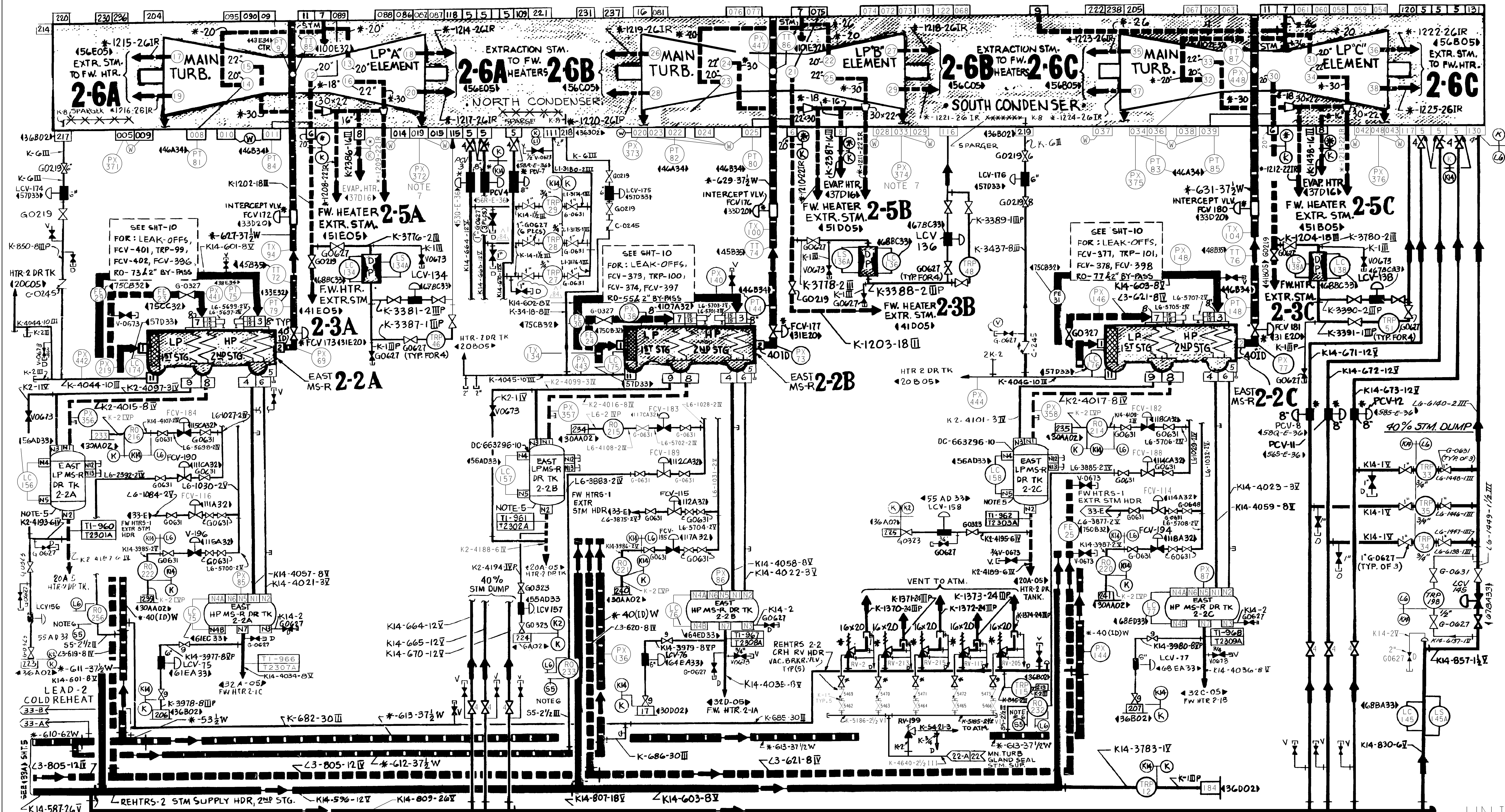


UNIT-2

FLOW LINE LEGEND
 HIGH PRESSURE STEAM & CONDENSATE
 LOW PRESSURE STEAM & CONDENSATE



NOTES:
 1. PG&E CLASS CODE [E] MANUAL & MOTOR OPERATED VALVES WITH ITEM NO. ARE UNDER SPEC. 8762.
 2. ON ALL TRAP & LCV DRAINS, FULL INSULATION IS USED UPSTREAM & PERSONNEL PROTECTION DOWNSTREAM.

LP MS-R DRAIN TR.	LI NOZ./N7/N8	LS (LOA) NOZ./N8/N9	LS (LIA) NOZ./N10/N11
2-2A	256	256A	256B
2-2B	257	257A	257B
2-2C	258	258A	258B

3. (W) DENOTES WESTINGHOUSE NOZZLE.
 4. ALL PIPING THIS SHEET: PG&E CLASS CODE [E].
 5. ADDITIONAL INST. & NOZZLES FOR LP MS-R DRAIN TANK.

6. 2 1/2" PIPING DENOTED IS PG&E PIPING SPEC. SS EXCEPT MATERIAL IS 304L & SOCKET WELDING ENDS ARE USED AT ELBOWS (34,36,38-A) FOR NOTES CONTINUATION SEE 34-C

7. CONDENSER N₂ INJECTION FOR DISSOLVED O₂ CONTROL IS THROUGH PX-372 AND PX-374 FOR N₂ SUPPLY, SEE DWG 108005 COORD 79-C. (35-C)(37-C)
 8. DELETED
 9. DELETED

DIABLO CANYON POWER PLANT - PG&E CO.			
TURBINE STEAM SUPPLY SYSTEM			
DRAWING	SHEET	PAGE	REV
108004	6	0	84