

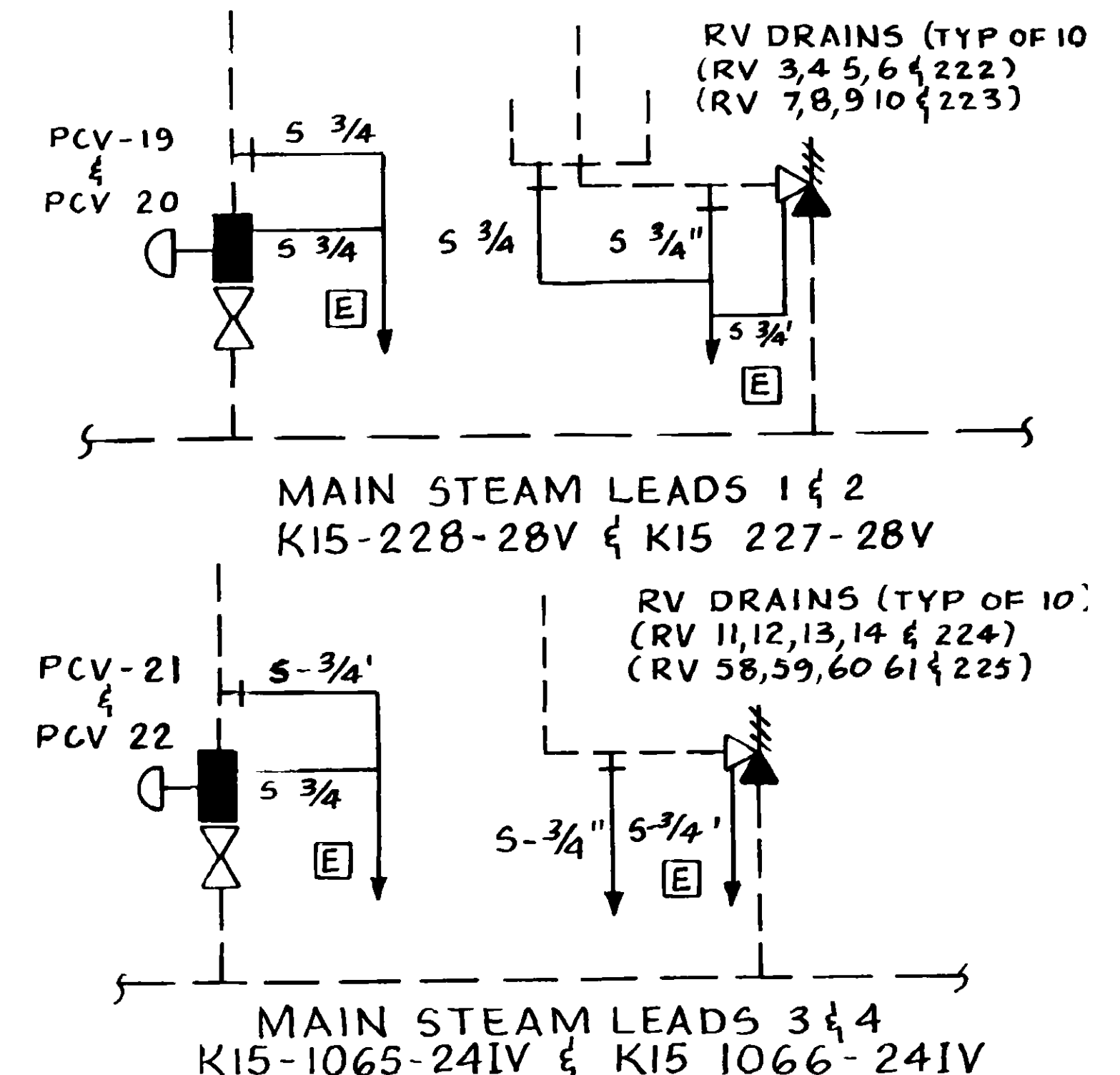
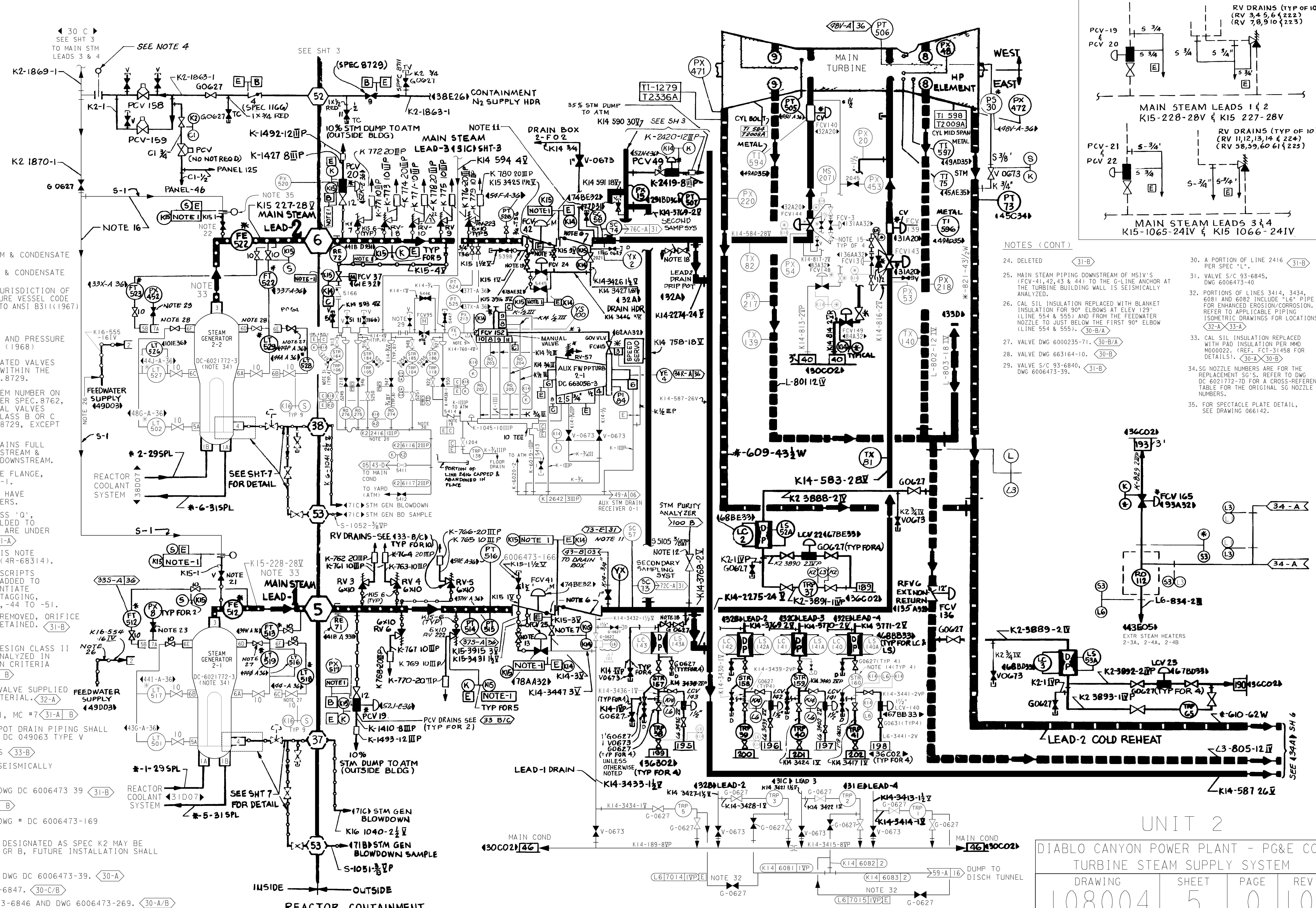
STM GEN NOZZLES	PG&E	MFR.
1-A	1A	
1-B	1B	
2	2	
3	3	
4	3	
5-A	4A	
5-B	4B	
6	5	
7	6	
8D-1	7B	
8D-2	7A	
9A-1	8A	
9A-2	8D	
9B-1	8B	
9B-2	8E	
9C-1	8C	
9C-2	8F	

FLOW LINE LEGEND

- HIGH PRESSURE STEAM & CONDENSATE
- LOW PRESSURE STEAM & CONDENSATE
- PIPING UNDER THE JURISDICTION OF ASME BOILER & PRESSURE VESSEL CODE SECTION I (1968) DESIGN TO ANSI B31.1(1967)

NOTES

- LIMITS OF ASME BOILER AND PRESSURE VESSEL CODE SECTION I (1968) JURISDICTION. MANUAL AND MOTOR OPERATED VALVES WITH ITEM NUMBER AND WITHIN THE LIMITS ARE UNDER SPEC. 8729.
- MANUAL VALVES WITH ITEM NUMBER ON CLASS E LINES ARE UNDER SPEC. 8762, EXCEPT AS NOTED. MANUAL VALVES WITH ITEM NUMBER ON CLASS B OR C LINES ARE UNDER SPEC. 8729, EXCEPT AS NOTED.
- ON ALL TRAPS & LCV DRAINS FULL INSULATION IS USED UPSTREAM & PERSONNEL PROTECTION DOWNSTREAM.
- 1" GREENWOOD SPECTACLE FLANGE, ANSI 600#, DC-6012369-1.
- ALL TEAM TRAPS ARE TO HAVE INTEGRAL STEAM STRAINERS.
- CHECK VALVE IS QA CLASS 'Q', DESIGN CLASS I AND WELDED TO ISOLATION VALVE, BOTH ARE UNDER SPEC. 8721.
- MANUAL VALVES WITH THIS NOTE SHALL BE DC-663125-8 (4R-68314).
- (SEE TABLE 30C) SUBSCRIPTS A, B, A-1, A-2 ETC WERE ADDED TO NOZZLE NOS TO DIFFERENTIATE SERVICE & INSTRUMENT TAGGING, REF. DWG. DC-663206-3, -4 TO -51.
- (FE-1) ORIFICE PLATE REMOVED, ORIFICE FLANGES WITH VALVES RETAINED.
- DELETED
- SC-57 AND SC-58 ARE DESIGN CLASS 11 AND ARE SEISMICALLY ANALYZED IN ACCORDANCE WITH DESIGN CRITERIA MEMORANDUM M-61
- 3/4"-2500# OBERT GATE VALVE SUPPLIED BY WESTINGHOUSE P4 MATERIAL.
- VALVES PER PO 4R-59911, MC #7
- MAIN STEAM LEAD DRIP POT DRAIN PIPING SHALL BE IN ACCORDANCE WITH DC 049063 TYPE V
- VELAN B 12 205 4F 02TS
- N₂ BLANKETING TUBING SEISMICALLY SUPPORTED
- VELAN W04 2054B 02MS DWG DC 6006473 39
- HANCOCK MOD 950W
- 1" VELAN CHECK VALVE DWG # DC 6006473-169 STOCK #94-2915.
- PORTIONS OF LINE 2416 DESIGNATED AS SPEC K2 MAY BE ASTM A53 OR ASTM A106 GR B, FUTURE INSTALLATION SHALL BE TO K2 SPEC.
- VELAN W05-2054B-02MS, DWG DC 6006473-39.
- DC-6006473-40, S/C 93-6847.
- 3/4" GLOBE VALVE, S/C 93-6846 AND DWG 6006473-269.



NOTES (CONT)

- DELETED
- MAIN STEAM PIPING DOWNSTREAM OF MSIV'S (FCV-41, 42, 43 & 44) TO THE G-LINE ANCHOR AT THE TURBINE BUILDING WALL IS SEISMICALLY ANALYZED.
- CAL SIL INSULATION REPLACED WITH BLANKET INSULATION FOR 90° ELBOWS AT ELEV 129' (LINE 554 & 555) AND FROM THE FEEDWATER NOZZLE TO JUST BELOW THE FIRST 90° ELBOW (LINE 554 & 555).
- VALVE DWG 6000235-71.
- VALVE DWG 663164-10.
- VALVE S/C 93-6840.
- A PORTION OF LINE 2416 PER SPEC "L".
- VALVE S/C 93-6845, DWG 6006473-40
- PORTIONS OF LINES 3414, 3434, 6081 AND 6082 INCLUDE "L" PIPE FOR ENHANCED EROSION/CORROSION. REFER TO APPLICABLE PIPING ISOMETRIC DRAWINGS FOR LOCATIONS.
- CAL SIL INSULATION REPLACED WITH PAD INSULATION PER MMD M000022. (REF. FCT-31458 FOR DETAILS).
- NOZZLE NUMBERS ARE FOR THE REPLACEMENT SO'S. REFER TO DWG DC 6021772-7D FOR A CROSS-REFERENCE TABLE FOR THE ORIGINAL SG NOZZLE NUMBERS.
- FOR SPECTACLE PLATE DETAIL, SEE DRAWING 066142.

UNIT 2
DIABLO CANYON POWER PLANT - PG&E CO.
TURBINE STEAM SUPPLY SYSTEM

DRAWING	SHEET	PAGE	REV
108004	5	0	101