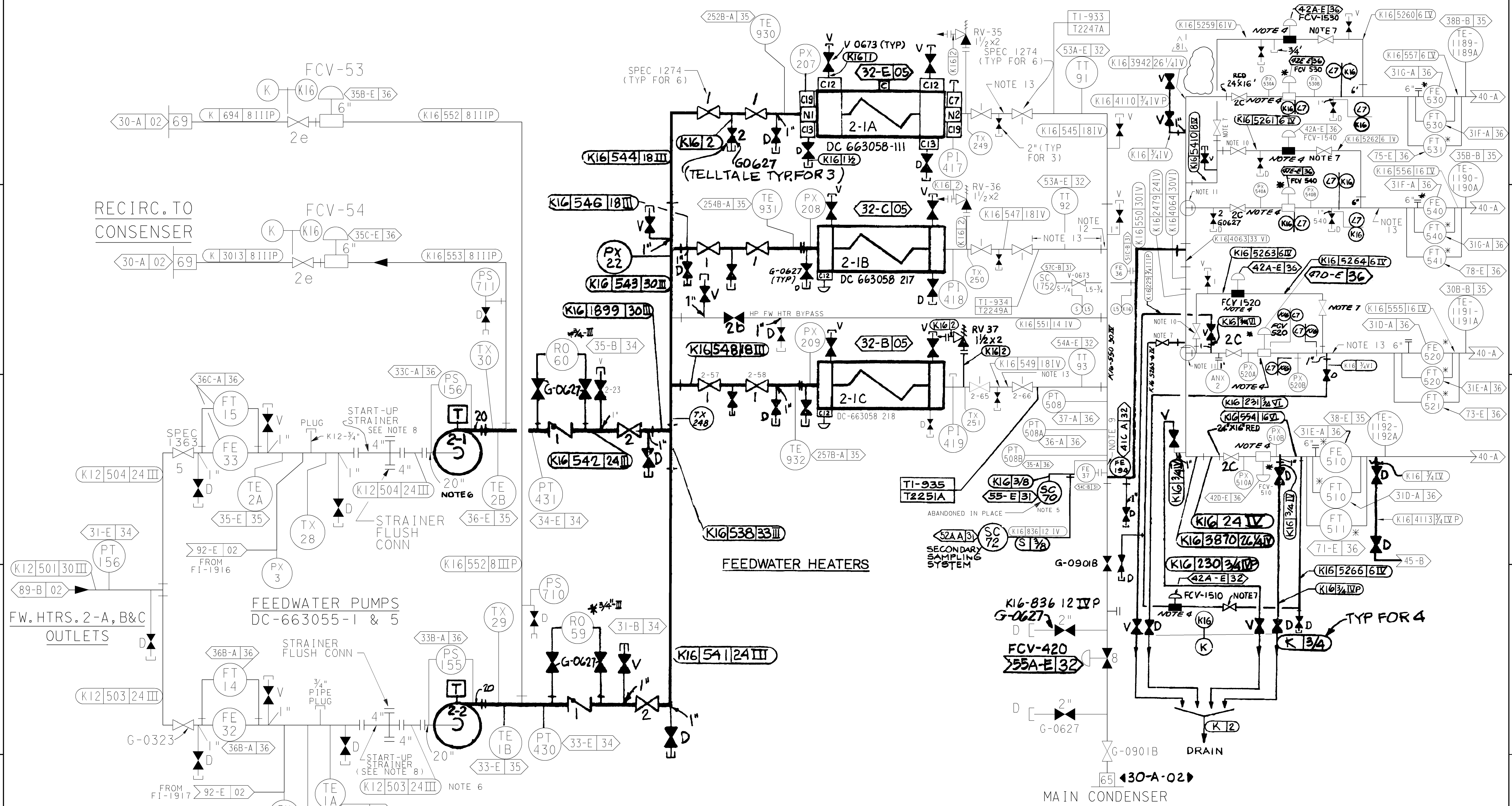


E  
D  
C  
B  
A

E  
D  
C  
B  
A



- NOTES:
1. ALL ISOLATION VALVES ON THIS SHEET WITH PG&E MARK NO. SHALL BE UNDER SPEC. 8711 (KELLOGG) EXCEPT AS NOTED.
  2. ALL PIPING ON THIS SHEET SHALL BE PG&E CODE CLASS E ALL MAIN FEEDWATER AND FEEDWATER BYPASS PIPING FROM THE CODE CLASS BREAK CHECK VALVE TO THE G-LINE ANCHOR AT THE TURBINE BUILDING WALL IS SEISMICALLY ANALYZED.
  3. ALL VALVES WITH ITEM NO. SHALL BE UNDER SPEC. 8762 EXCEPT AS NOTED.
  4. VALVES FCV-510, 520, 530, 540, 1510, 1520, 1530, AND 1540 ARE "Q" SAFETY RELATED DESIGN CLASS I.
  5. SC-70 IS DESIGN CLASS II AND SEISMICALLY ANALYZED IN ACCORDANCE WITH DESIGN CRITERIA MEMORANDUM M-61. (37-D)
  6. FEEDWATER PUMP SUPERVISORY INSTRUMENTATION SHOWN ON 108020. (33-B/C)
  7. VELAN VALVE PER PO 4R-67229 (DC 663317-173-1).
  8. START-UP STRAINERS TO BE INSTALLED AND REMOVED AS NEEDED. REF PROJECT FILE 20 258 6. (32-B/C)
  9. SOME K16 PIPING SECTIONS AND/OR FITTINGS HAVE BEEN REPLACED WITH ALTERNATE (37-C) MATERIALS TO REDUCE EROSION/CORROSION OF THE PIPING. SEE DWG. 500562 FOR DETAILS.
  10. BORG WAGNER VALVE PER PO 4R 67228 (DC 6000235-42-1).
  11. LATERAL BRANCH I.D. CLAD WITH INCONEL. (37-D)
  12. BRANCH CONNECTION I.D. CLAD WITH INCONEL REF. MMD 000039-1. (37-D)
  13. PIPE SECTION CONTAINS A MIN. OF 0.10% CHROMIUM. (36-C) (36-E) (37-D) (39-D)

UNIT 2

DIABLO CANYON POWER PLANT - PG&E CO.  
FEEDWATER SYSTEM

DRAWING	SHEET	PAGE	REV
108003	3	0	81

RASTER=8003-3.dgn  
 DCN=8003-3.dgn  
 CAD User: ZNS4 DDate: 05-19-2016