

A

B

C

D

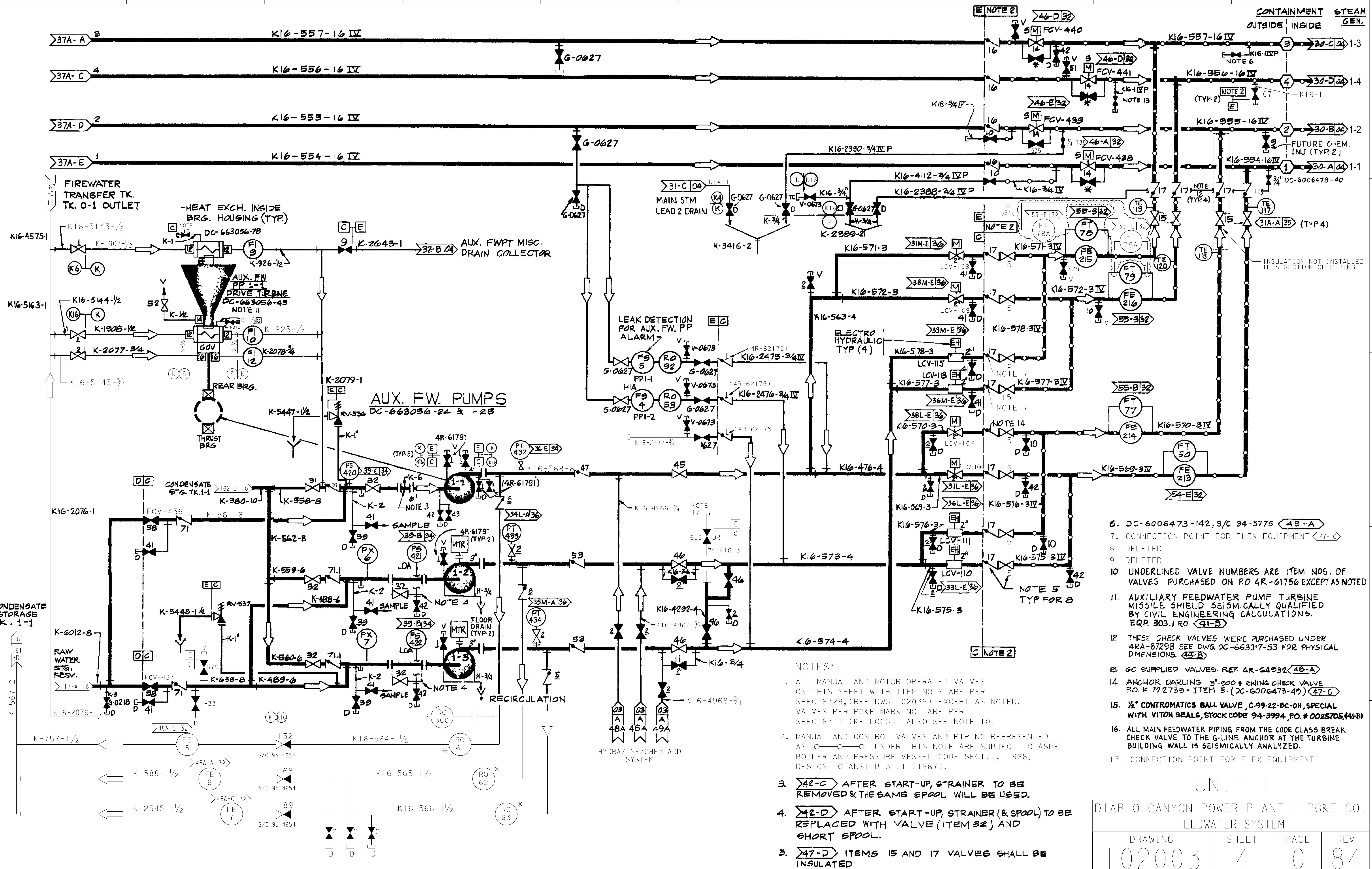
A

B

C

D

E



- 6. DC-6006473-142, S/C 94-3775 (49-A)
- 7. CONNECTION POINT FOR FLEX EQUIPMENT (47-C)
- 8. DELETED
- 9. DELETED
- 10. UNDERLINED VALVE NUMBERS ARE ITEM NOS. OF VALVES PURCHASED ON PO 4R-61756 EXCEPT AS NOTED
- 11. AUXILIARY FEEDWATER PUMP TURBINE MISSILE SHIELD SEISMICALLY QUALIFIED BY CIVIL ENGINEERING CALCULATIONS. EQP. 303.1 RO (41-B)
- 12. THESE CHECK VALVES WERE PURCHASED UNDER 4RA-8729B SEE DWG. DC-66337-53 FOR PHYSICAL DIMENSIONS. (45-B)
- 13. GC SUPPLIED VALVES. REF 4R-64932 (48-A)
- 14. ANCHOR DARLING 3"-000 # SKIN CHECK VALVE P.O. # 722739- ITEM 5. (DC-6006473-49) (47-C)
- 15. 1/2" CONTRAMATICS BALL VALVE, C-99-22-BC-OH, SPECIAL WITH VITON SEALS, STOCK CODE 94-3994, P.O. # 0025705 (41-B)
- 16. ALL MAIN FEEDWATER PIPING FROM THE CODE CLASS BREAK CHECK VALVE TO THE G-LINE ANCHOR AT THE TURBINE BUILDING WALL IS SEISMICALLY ANALYZED.
- 17. CONNECTION POINT FOR FLEX EQUIPMENT.

- NOTES:**
1. ALL MANUAL AND MOTOR OPERATED VALVES ON THIS SHEET WITH ITEM NO'S ARE PER SPEC. 8729, (REF. DWG. 102039) EXCEPT AS NOTED. VALVES PER PG&E MARK NO. ARE PER SPEC. 8711 (KELLOGG). ALSO SEE NOTE 10.
 2. MANUAL AND CONTROL VALVES AND PIPING REPRESENTED AS ○ UNDER THIS NOTE ARE SUBJECT TO ASME BOILER AND PRESSURE VESSEL CODE SECT. I, 1968, DESIGN TO ANSI B 31.1 (1967).
 3. 42-C AFTER START-UP, STRAINER TO BE REMOVED & THE SAME SPOOL WILL BE USED.
 4. 42-D AFTER START-UP, STRAINER (& SPOOL) TO BE REPLACED WITH VALVE (ITEM 32) AND SHORT SPOOL.
 5. 47-D ITEMS 15 AND 17 VALVES SHALL BE INSULATED

UNIT I

DIABLO CANYON POWER PLANT - PG&E CO.

FEEDWATER SYSTEM

DRAWING	SHEET	PAGE	REV
102003	4	0	84

RASTER=102003s4.dgn
 DCN=102003s4.dgn
 CAD User: ZNS4 Date: 06-26-2017