

A

B

C

D

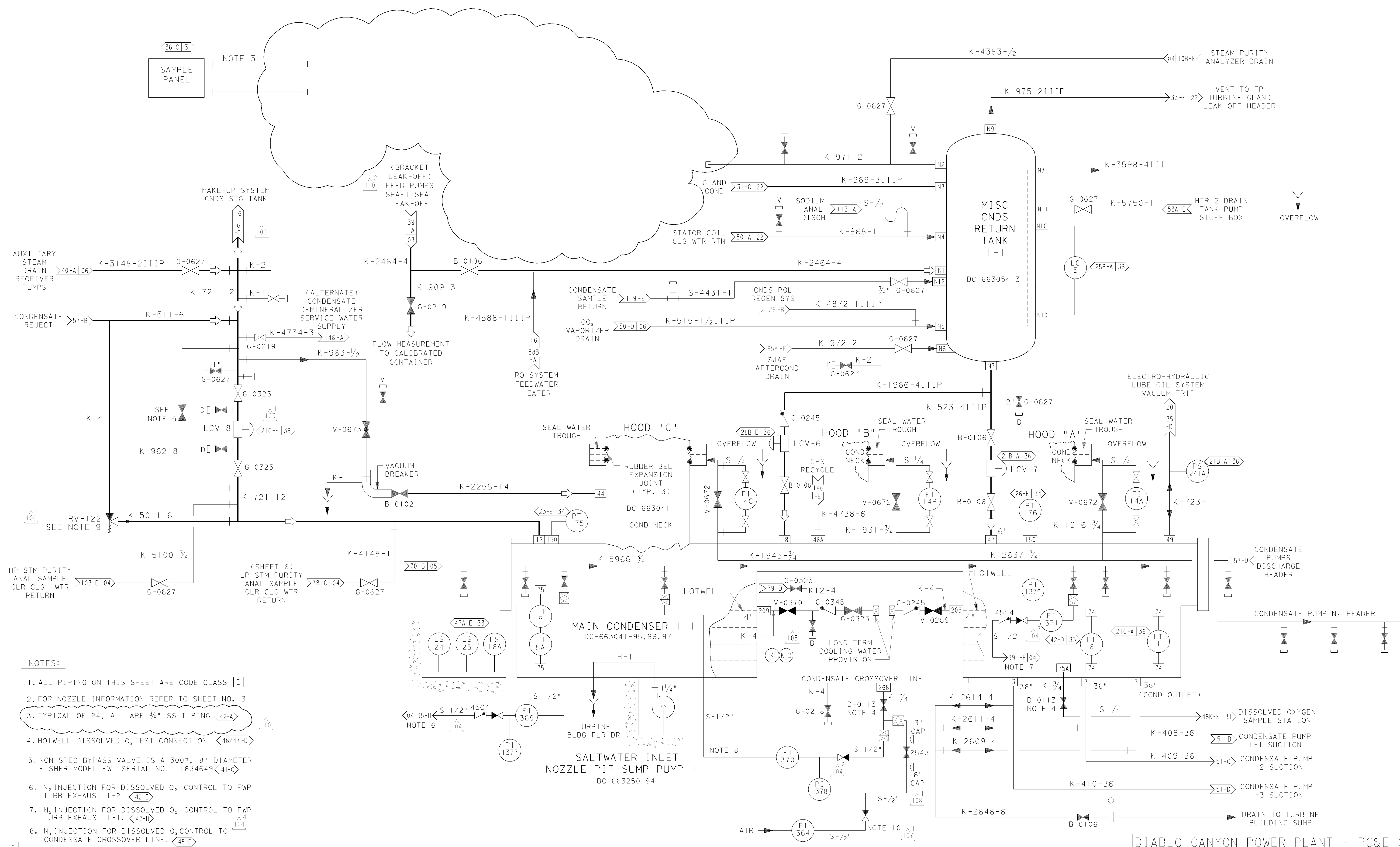
A

B

C

D

E



- NOTES:
1. ALL PIPING ON THIS SHEET ARE CODE CLASS E
 2. FOR NOZZLE INFORMATION REFER TO SHEET NO. 3
 3. TYPICAL OF 24, ALL ARE 3/8" SS TUBING (42-A)
 4. HOTWELL DISSOLVED O₂ TEST CONNECTION (46/47-D)
 5. NON-SPEC BYPASS VALVE IS A 300#, 8" DIAMETER FISHER MODEL EWT SERIAL NO. 11634649 (41-C)
 6. N₂ INJECTION FOR DISSOLVED O₂ CONTROL TO FWP TURB EXHAUST 1-2. (42-E)
 7. N₂ INJECTION FOR DISSOLVED O₂ CONTROL TO FWP TURB EXHAUST 1-1. (47-D)
 8. N₂ INJECTION FOR DISSOLVED O₂ CONTROL TO CONDENSATE CROSSOVER LINE. (45-D)
 9. SPACER INSTALLED AT INLET TO RV-122. (40-C)
 10. AIR INJECTION FOR DISSOLVED O₂ CONTROL TO CONDENSATE CROSSOVER LINE. (46-E)

DIABLO CANYON POWER PLANT - PG&E CO.
CONDENSATE SYSTEM

DRAWING	SHEET	PAGE	REV
102002	4	0	110

02-25-2010	AJFJ	FxC2		KERSI J. DALAL	MECHANICAL	M 16690	3/31/2010	REVISED PER DDN-2*169
DATE	DWN	RE	IV	PROFESSIONAL ENGINEER	PE DISC.	PE#	PE EXP.	

RASTER=2002s4.dgn
 DGN=2002s4.dgn
 CAD User: AJFJ DGT: 02-25-2010