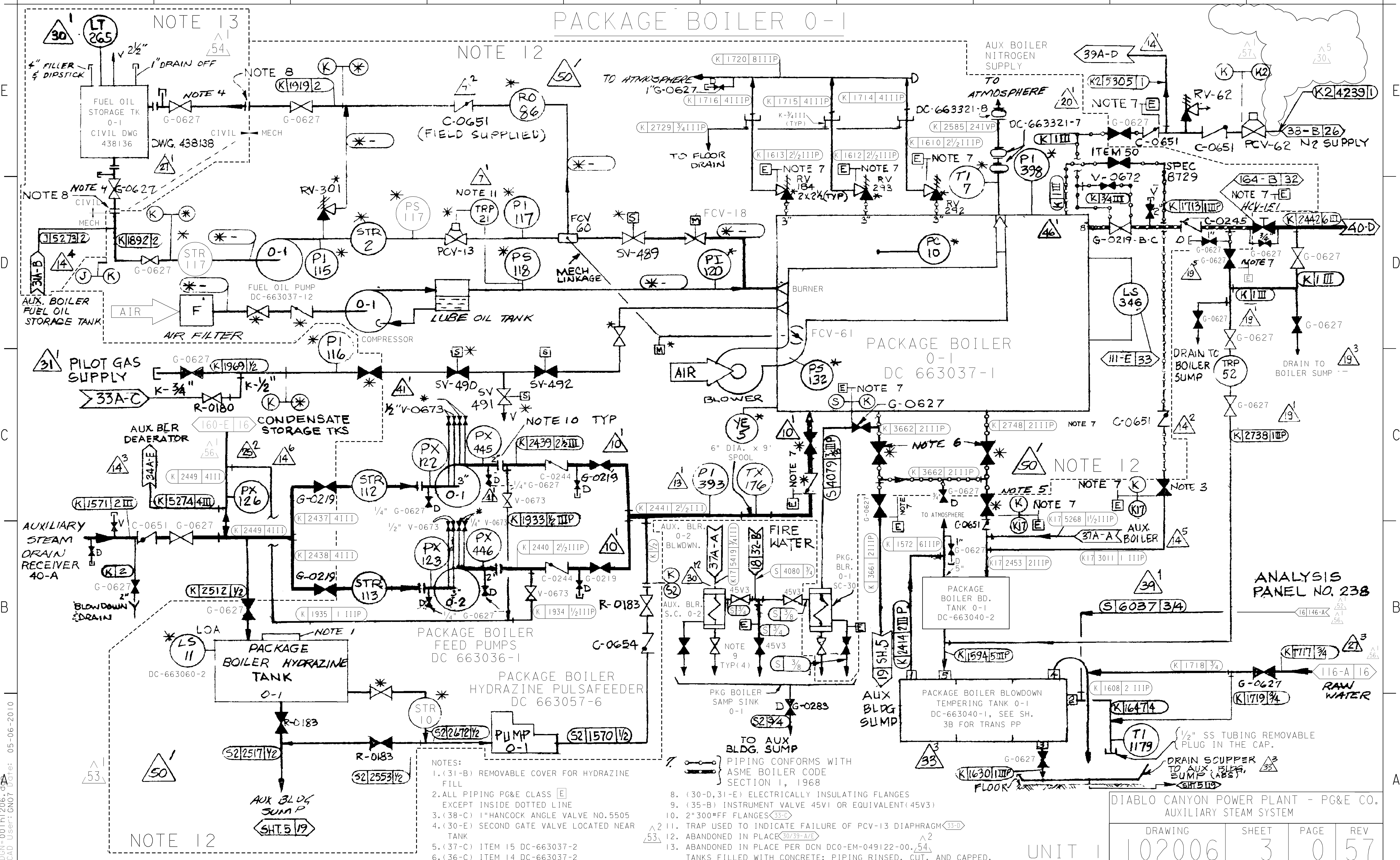


PACKAGE BOILER 0-1



- NOTES:
1. (31-B) REMOVABLE COVER FOR HYDRAZINE FILL
 2. ALL PIPING PG&E CLASS [E] EXCEPT INSIDE DOTTED LINE
 3. (38-C) 1" HANCOCK ANGLE VALVE NO. 5505
 4. (30-E) SECOND GATE VALVE LOCATED NEAR TANK
 5. (37-C) ITEM 15 DC-663037-2
 6. (36-C) ITEM 14 DC-663037-2
 7. PIPING CONFORMS WITH ASME BOILER CODE SECTION I, 1968
 8. (30-D, 31-E) ELECTRICALLY INSULATING FLANGES
 9. (35-B) INSTRUMENT VALVE 45VI OR EQUIVALENT (45V3)
 10. 2" 300# FF FLANGES (33-D)
 11. TRAP USED TO INDICATE FAILURE OF PCV-13 DIAPHRAGM (33-B)
 12. ABANDONED IN PLACE (30/39-A/E)
 13. ABANDONED IN PLACE PER DCN DCO-EM-049122-00. (54)

DIABLO CANYON POWER PLANT - PG&E CO.
AUXILIARY STEAM SYSTEM

DRAWING	SHEET	PAGE	REV
102006	3	0	57

UNIT 1

RASTER=001h1206.dgn
 DCN=001h1206.dgn
 CAD User: GNO7 DDate: 05-06-2010