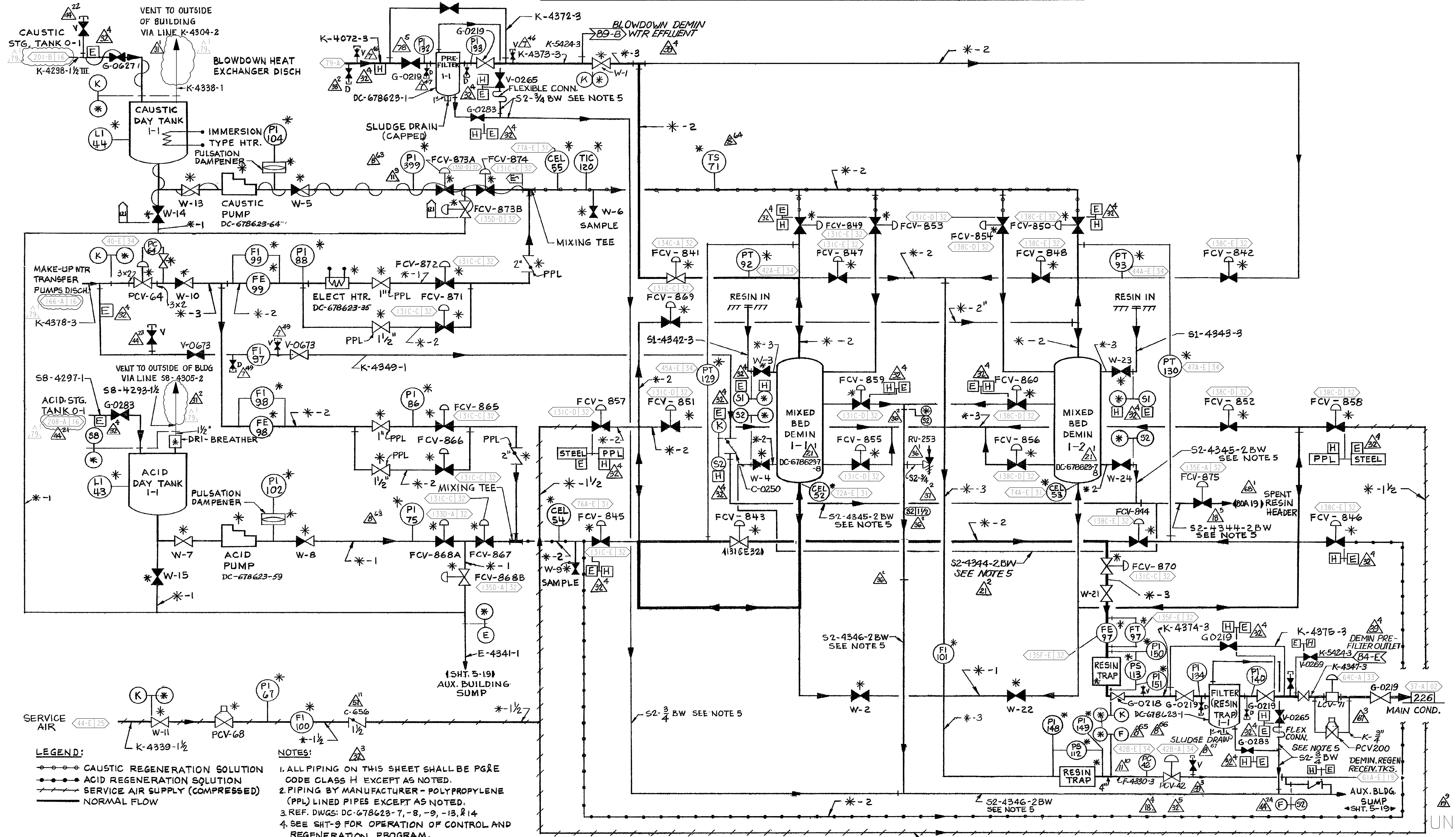


STEAM GENERATORS BLOWDOWN TREATMENT DEMINERALIZER SYSTEM



LEGEND:
 - - - CAUSTIC REGENERATION SOLUTION
 - - - ACID REGENERATION SOLUTION
 - - - SERVICE AIR SUPPLY (COMPRESSED)
 - - - NORMAL FLOW

NOTES:
 1. ALL PIPING ON THIS SHEET SHALL BE PG&E CODE CLASS H EXCEPT AS NOTED.
 2. PIPING BY MANUFACTURER - POLYPROPYLENE (PPL) LINED PIPES EXCEPT AS NOTED.
 3. REF. DWGS: DC-678623-7, -8, -9, -13, & 14
 4. SEE SHT-9 FOR OPERATION OF CONTROL AND REGENERATION PROGRAM.
 5. BW - DENOTES BUTTWELDED LINES WITH THIS NOTE SHALL HAVE BUTTWELDED JOINTS TO AVOID ENTRAPMENT OF RESIN. 483E, 848, 858, 86A, 88A/B.

7. 1 POST SEAL 02-1134-13-01-02 BUTTERFLY VALVE WITH 1M GEAR OPERATOR 487

DIABLO CANYON POWER PLANT - PG&E CO.

DRAWING	SHEET	PAGE	REV
102004	8	0	79

RASTER=200488.dgn
 DGN=200488.dgn
 CAD User: MIBF D07re: 12-19-2005