

E

D

C

B

A

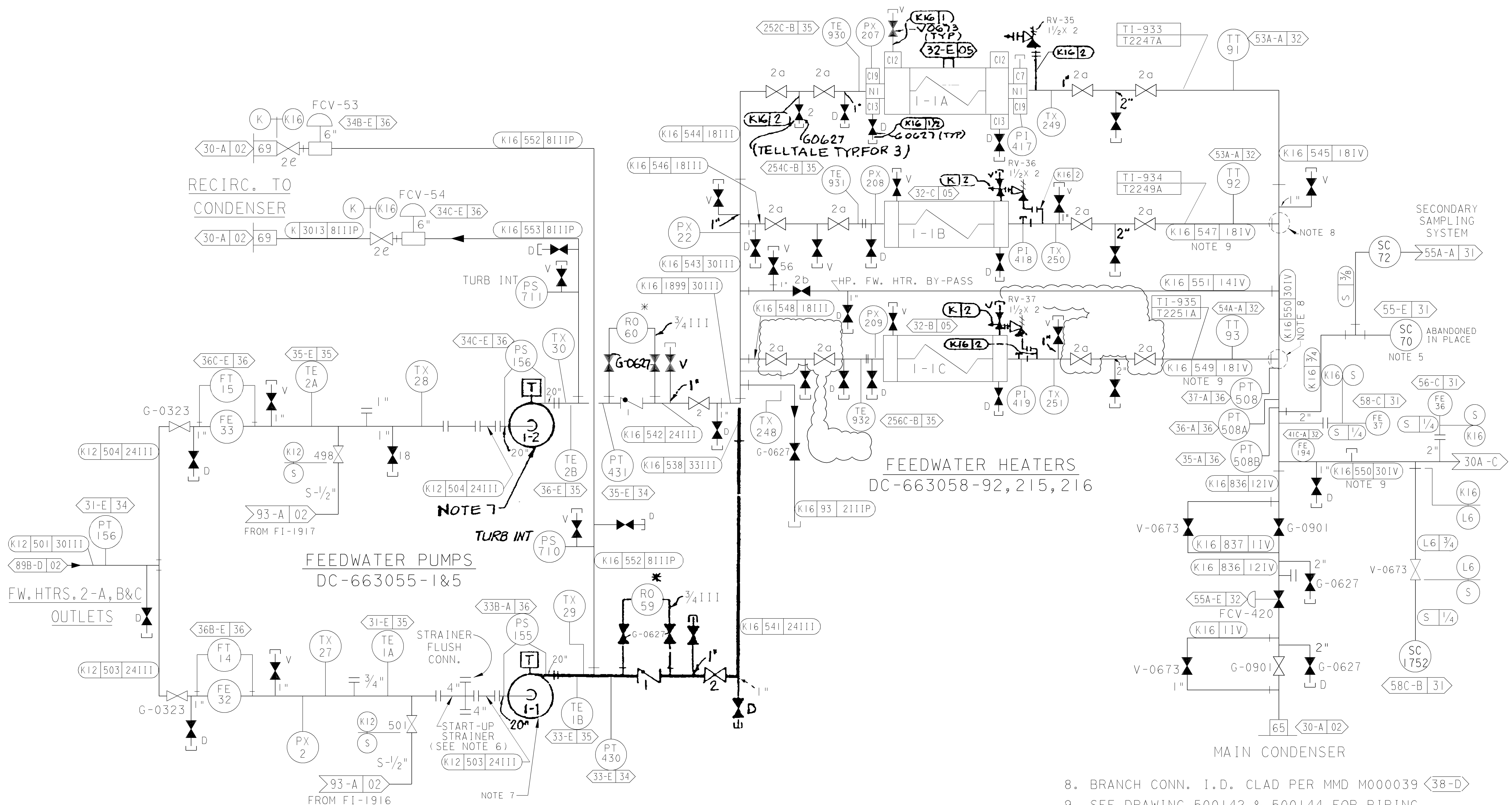
E

D

C

B

A



NOTES:

1. ALL ISOLATION VALVES ON THIS SHEET WITH PG&E MARK NO. SHALL BE UNDER SPEC. 8711 (KELLOG) EXCEPT AS NOTED.
2. ALL PIPINGS ON THIS SHEET SHALL BE PG&E CLASS E.
3. ALL VALVES ON THIS SHEET WITH ITEM NO. SHALL BE UNDER SPEC. 8762.
4. DELETED
5. SC-70 IS DESIGN CLASS II AND SEISMICALLY ANALYZED IN ACCORDANCE WITH DESIGN CRITERIA MEMORANDUM M-61 (39-C)
6. START-UP STRAINERS TO BE INSTALLED AND REMOVED AS NEEDED FOR REF PROJECT FILE 20.258.6.
7. FEEDWATER PUMP SUPERVISORY INSTRUMENTATION SHOWN ON 102020, SH. 6A.

8. BRANCH CONN. I.D. CLAD PER MMD M000039 (38-D)
9. SEE DRAWING 500142 & 500144 FOR PIPING MATERIAL CHROMIUM REQUIREMENTS

UNIT I

DIABLO CANYON POWER PLANT - PG&E CO.  
FEEDWATER SYSTEM

DRAWING	SHEET	PAGE	REV
102003	3	0	84

RASTER=erui0701.dgn  
 DGN=erui0701.dwg  
 CAD User:PNWB DDate: 11-02-2015