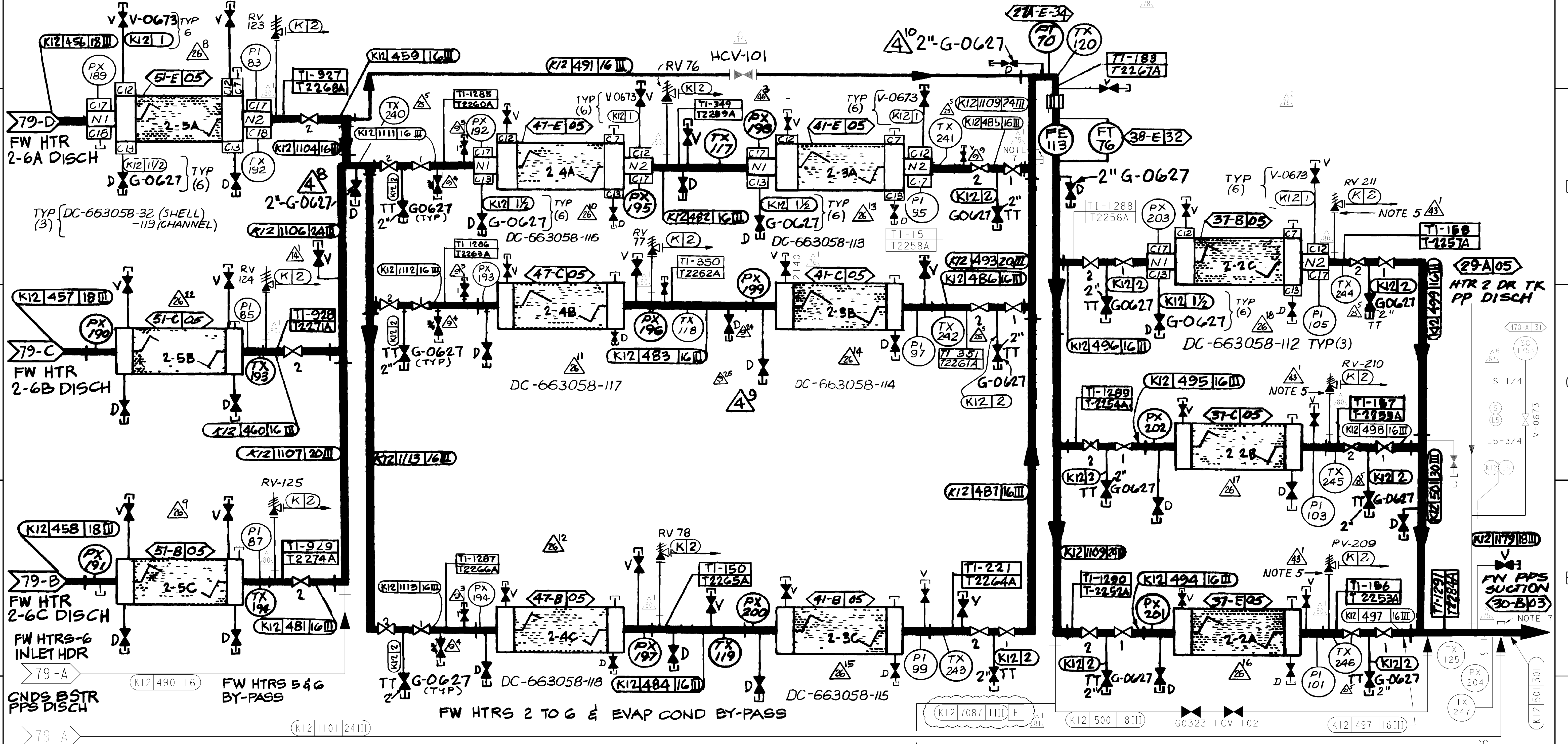


### FEEDWATER HEATERS



- NOTES:
1. ALL VENT VALVES SHOULD BE V0673.
  2. ALL DRAIN VALVES SHOULD BE G0627.
  3. VALVES WITH ITEM No.1 SHALL BE PER PO 4R-1276. VALVES WITH ITEM No.2 SHALL BE PER PO 4R-A1363.
  4. ALL THERMAL RV'S IN THIS SHT. SHALL BE: 1" x 2" 80.
  5. FLANGES ARE 600 LB 1/4" RAISED FACE ASTM A105.
  6. DELETED
  7. 1" BORESCOPE PORT (86-D) (89-B) 75.
  8. FOR FUTURE CHEMICAL INJECTION SYSTEM 78.

DIABLO CANYON POWER PLANT - PG&E CO.  
CONDENSATE SYSTEM

DRAWING	SHEET	PAGE	REV
108002	8	0	81

UNIT 2