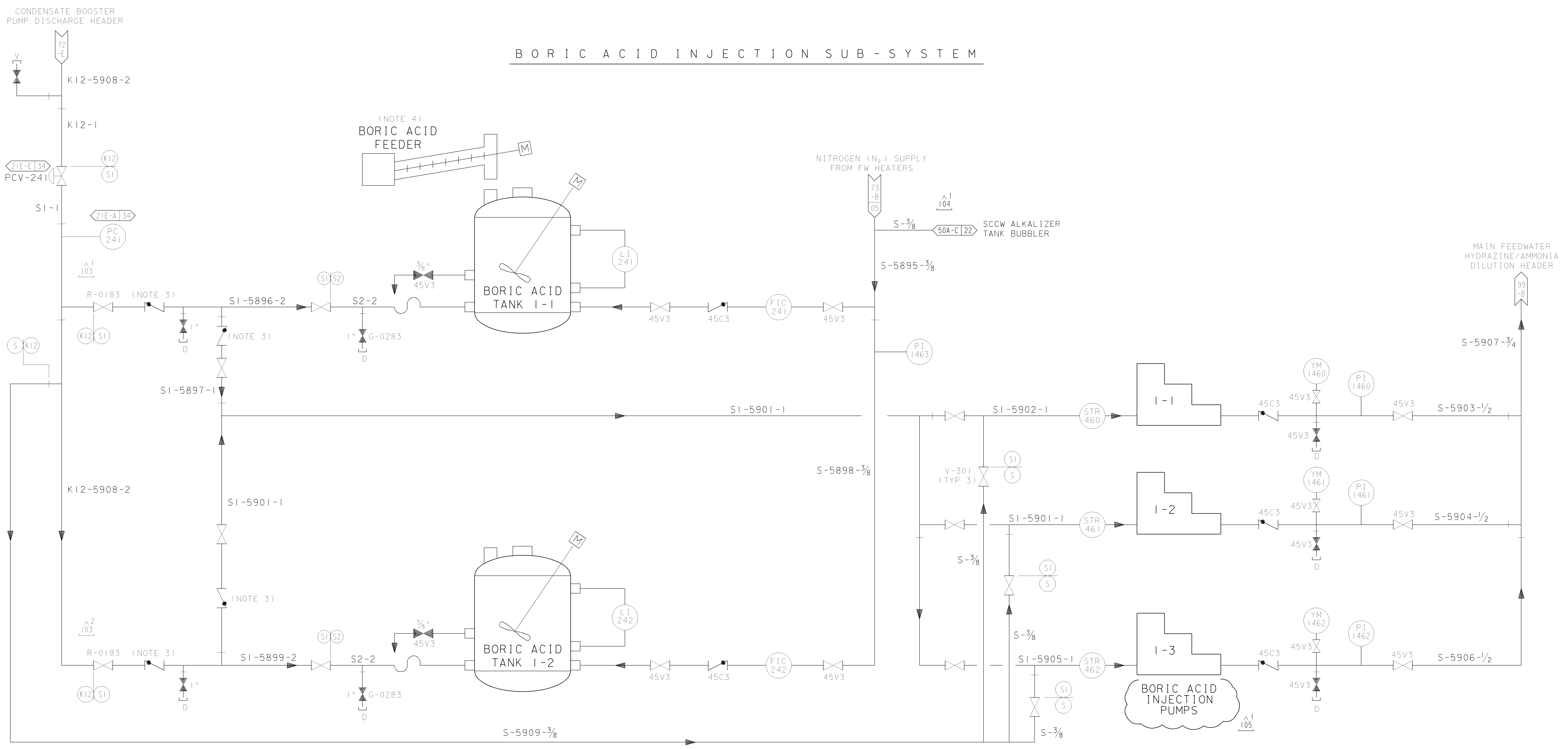


BORIC ACID INJECTION SUB-SYSTEM



NOTES

1. ALL STOP VALVES ON THIS SHEET ARE GLOBE VALVES, PG&E VALVE SPECIFICATION MARK NO. V-0301 UNLESS NOTED OTHERWISE.
2. PROVIDE LOW POINT DRAINS ON 2" SUPPLY LINES.
3. CHECK VALVES ARE LADISH MODEL 5371. 81A-B/D
4. THIS SWINGS AND IS SHARED BY BORIC ACID TANKS I-1 & I-2. 82A-B
5. ALL PIPING SHOWN ON THIS SHEET SHALL BE PG&E CODE CLASS "E".

UNIT 1

DIABLO CANYON POWER PLANT - PG&E CO.			
CONDENSATE SYSTEM			
DRAWING	SHEET	PAGE	REV
102002	8A	0	105

03-18-2008	RHS1	FxC2	KERSI J. DALAL	MECHANICAL	M 16690	3/31/2008	REVISED PER FCT-33491
DATE	DWN	RE	IV	PROFESSIONAL ENGINEER	PE DISC.	PE#	PE EXP.

RASTER=200288a.dgn
 DGN=200288a.dgn
 CAD User: RHS1 Date: 03-18-2008