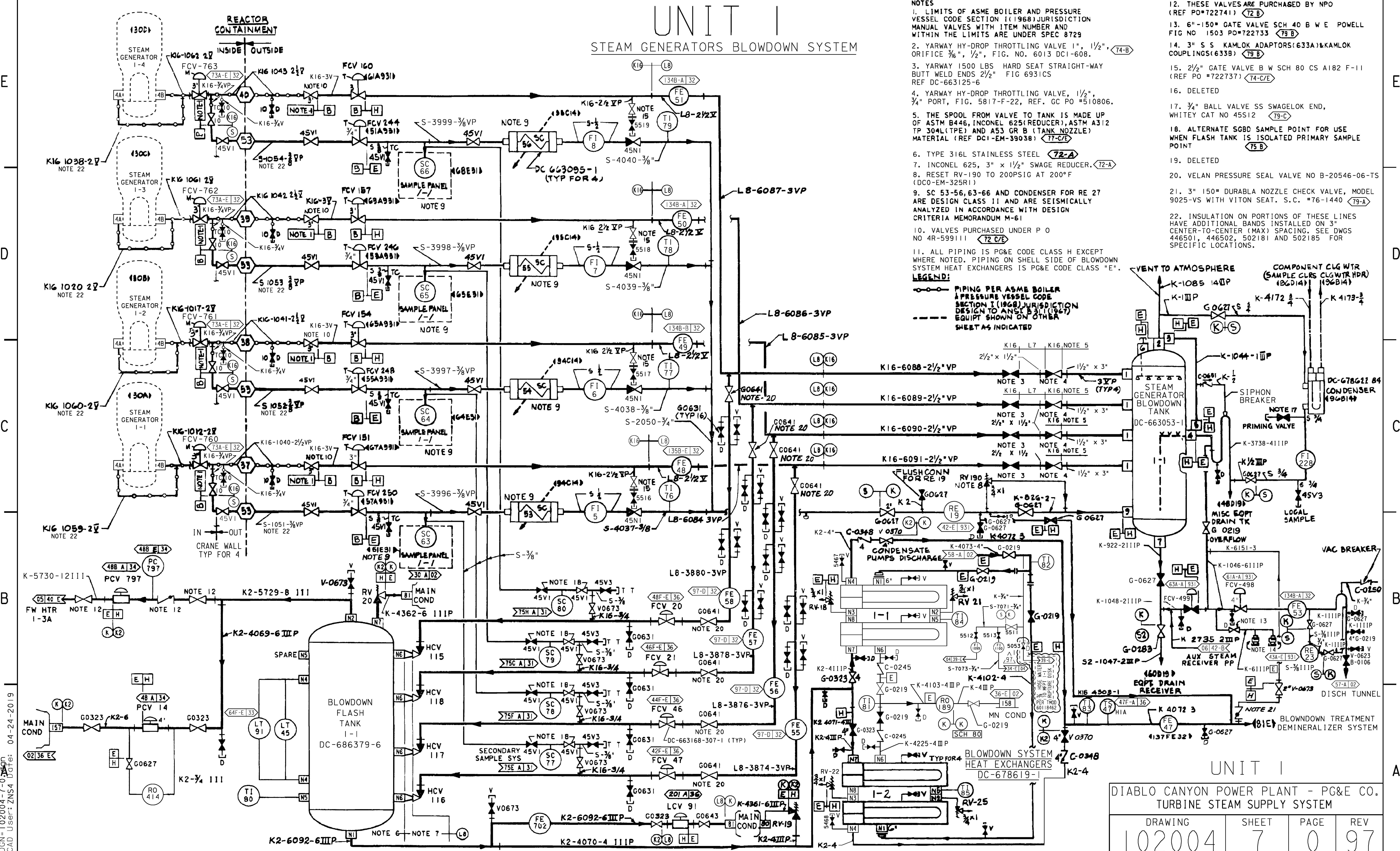


UNIT I STEAM GENERATORS BLOWDOWN SYSTEM



- NOTES**
- LIMITS OF ASME BOILER AND PRESSURE VESSEL CODE SECTION I (1968) JURISDICTION MANUAL VALVES WITH ITEM NUMBER AND WITHIN THE LIMITS ARE UNDER SPEC 8729
 - YARWAY HY-DROP THROTTLING VALVE 1", 1 1/2", ORIFICE 3/8", 1/2", FIG. NO. 6013 DCI-608.
 - YARWAY 1500 LBS. HARD SEAT STRAIGHT-WAY BUTT WELD ENDS 2 1/2" FIG 6931CS REF DC-663125-6
 - YARWAY HY-DROP THROTTLING VALVE, 1 1/2", 3/4" PORT, FIG. 5817-F-22, REF. GC PO #510806.
 - THE SPOOL FROM VALVE TO TANK IS MADE UP OF ASTM B446, INCONEL 625 (REDUCER), ASTM A312 TP 304L (TPE) AND A53 GR B (TANK NOZZLE) MATERIAL (REF DCI-EM-39038) 77-C/E
 - TYPE 316L STAINLESS STEEL 72-A
 - INCONEL 625, 3" x 1 1/2" SWAGE REDUCER. 72-A
 - RESET RV-190 TO 200PSIG AT 200°F (DCO-EM-325R1)
 - SC 53-56, 63-66 AND CONDENSER FOR RE 27 ARE DESIGN CLASS II AND ARE SEISMICALLY ANALYZED IN ACCORDANCE WITH DESIGN CRITERIA MEMORANDUM M-61
 - VALVES PURCHASED UNDER P O NO 4R-599111 72 C/E
 - ALL PIPING IS PG&E CODE CLASS H EXCEPT WHERE NOTED. PIPING ON SHELL SIDE OF BLOWDOWN SYSTEM HEAT EXCHANGERS IS PG&E CODE CLASS "E".
- LEGEND:**
- PIPING PER ASME BOILER & PRESSURE VESSEL CODE SECTION I (1968) JURISDICTION DESIGN TO ANST B 311 (1967) EQUIP SHOWN ON OTHER SHEET AS INDICATED
- THESE VALVES ARE PURCHASED BY NPO (REF PO#722741) 72 B
 - 6"-150# GATE VALVE SCH 40 B W E POWELL FIG NO 1503 PO#722733 79 B
 - 3" S S KAMLOK ADAPTORS(633A)&KAMLOK COUPLINGS(633B) 79 B
 - 2 1/2" GATE VALVE B W SCH 80 CS A182 F-11 (REF PO #722737) 74-C/E
 - DELETED
 - 3/4" BALL VALVE SS SWAGelok END, WHITEY CAT NO 45S12 79-C
 - ALTERNATE SGBD SAMPLE POINT FOR USE WHEN FLASH TANK IS ISOLATED PRIMARY SAMPLE POINT 75 B
 - DELETED
 - VELAN PRESSURE SEAL VALVE NO B-20546-06-TS
 - 3" 150# DURABLE NOZZLE CHECK VALVE, MODEL 9025-VS WITH VITON SEAT. S.C. #76-1440 79-A
 - INSULATION ON PORTIONS OF THESE LINES HAVE ADDITIONAL BANDS INSTALLED ON 3" CENTER-TO-CENTER (MAX) SPACING. SEE DWGS 446501, 446502, 502181 AND 502185 FOR SPECIFIC LOCATIONS.

UNIT I
DIABLO CANYON POWER PLANT - PG&E CO.
TURBINE STEAM SUPPLY SYSTEM

DRAWING	SHEET	PAGE	REV
102004	7	0	97

RASTER=102004-7-0.dgn
DCN=102004-7-0.dgn
CAD User: ZNS4 Dgfr: 04-24-2019