

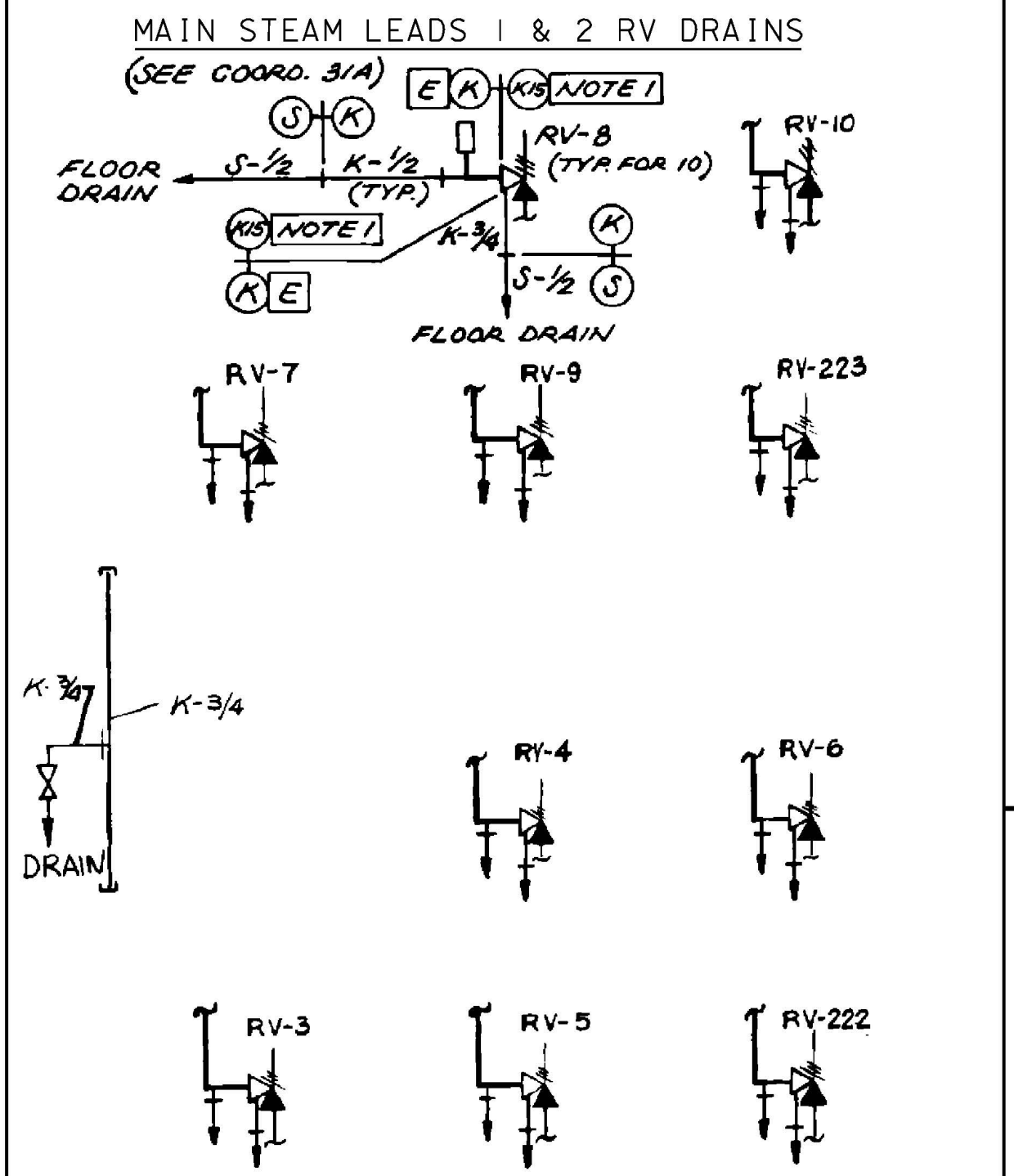
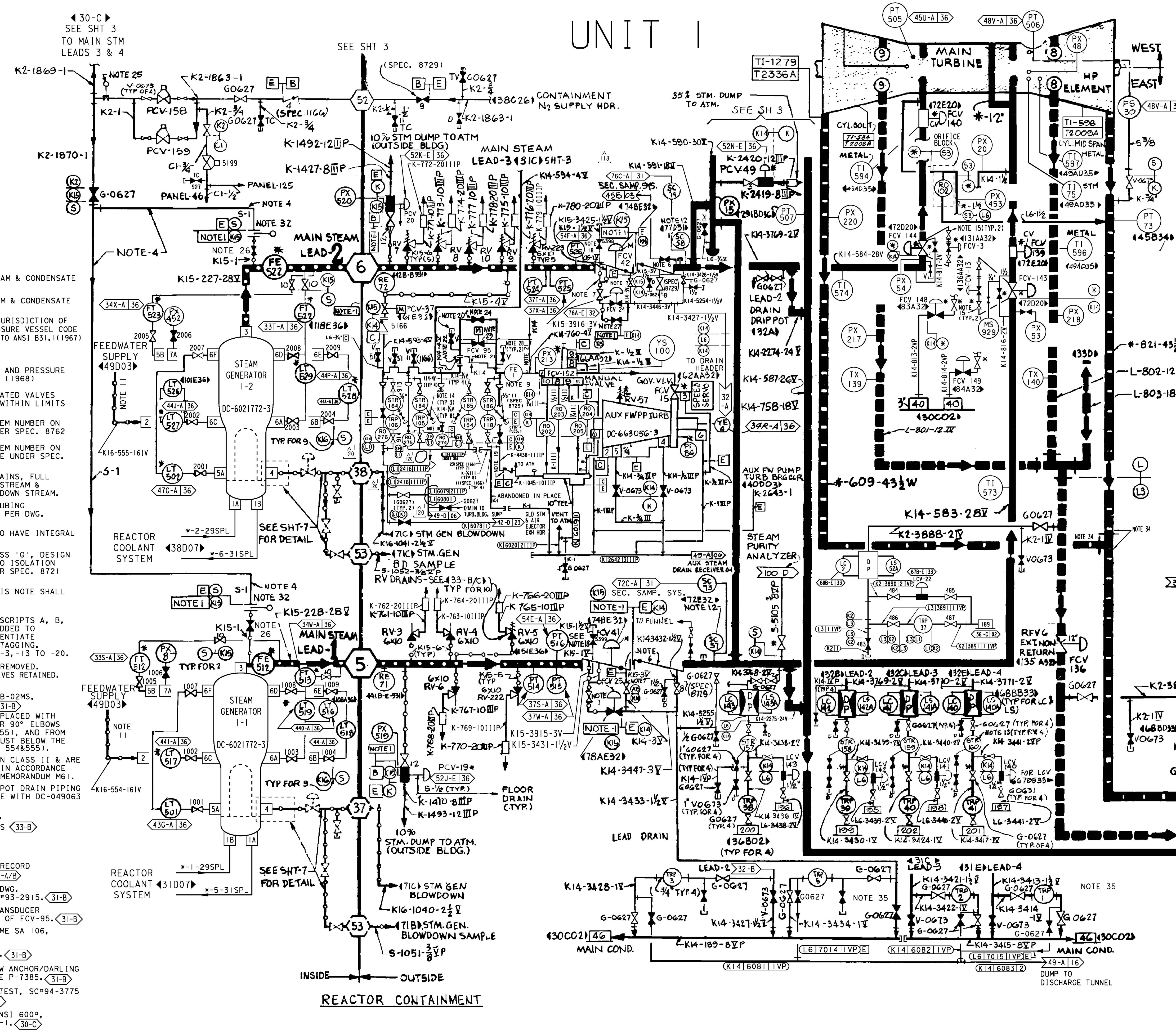
| STM. GEN. NOZZLES |      |
|-------------------|------|
| PG&E              | MFR. |
| 1-A               | 1A   |
| 1-B               | 1B   |
| 3                 | 2    |
| 4                 | 3    |
| 5-A               | 4A   |
| 5-B               | 4B   |
| 6                 | 5    |
| 7                 | 6    |
| 8D-1              | 7B   |
| 8D-2              | 7A   |
| 9A-1              | 8A   |
| 9A-2              | 8D   |
| 9B-1              | 8B   |
| 9B-2              | 8E   |
| 9C-1              | 8C   |
| 9C-2              | 8F   |

ABOVE NOZ. EQUIV. TYP. FOR ALL GENS. SEE NOTE 8

**FLOW LINE LEGEND**

- THICK LINE: HIGH PRESSURE STEAM & CONDENSATE
- THIN LINE: LOW PRESSURE STEAM & CONDENSATE
- DOTTED LINE: PIPING UNDER THE JURISDICTION OF ASME BOILER & PRESSURE VESSEL CODE SECT. I (1968). DESIGN TO ANSI B31.1 (1967)

- NOTES:**
- LIMITS OF ASME BOILER AND PRESSURE VESSEL CODE SECTION I (1968) JURISDICTION. MANUAL AND MOTOR OPERATED VALVES WITH ITEM NUMBER AND WITHIN LIMITS ARE UNDER SPEC. 8729.
  - MANUAL VALVES WITH ITEM NUMBER ON CLASS E LINES ARE UNDER SPEC. 8762 EXCEPT AS NOTED. MANUAL VALVES WITH ITEM NUMBER ON CLASS B OR C LINES ARE UNDER SPEC. 8729 EXCEPT AS NOTED.
  - ON ALL TRAPS & LCV DRAINS, FULL INSULATION IS USED UPSTREAM & PERSONNEL PROTECTION DOWN STREAM.
  - NITROGEN BLANKETING TUBING SEISMICALLY SUPPORTED PER DWG. NO. 049238.
  - ALL STEAM TRAPS ARE TO HAVE INTEGRAL STEAM STRAINERS.
  - CHECK VALVE IS GA CLASS 'Q', DESIGN CLASS 1, AND WELDED TO ISOLATION VALVE. BOTH ARE UNDER SPEC. 8721
  - MANUAL VALVES WITH THIS NOTE SHALL BE ITEM NO. 13.1
  - (SEE TABLE 30-C) SUBSCRIPTS A, B, A-1, A-2, ETC. WERE ADDED TO NOZZLE NOS. TO DIFFERENTIATE SERVICE & INSTRUMENT TAGGING. REF. DWGS: DC-663206-3, -13 TO -20.
  - (FE-1) ORIFICE PLATE REMOVED. ORIFICE FLANGES WITH VALVES RETAINED.
  - VELAN MODEL #W04-2074B-02MS, DWG. #DC-6006473-40. (31-B)
  - CAL-SIL INSULATION REPLACED WITH BLANKET INSULATION FOR 90° ELBOWS AT EL. 129' (LINE 554&555), AND FROM FEEDWATER NOZZLE TO JUST BELOW THE FIRST 90° ELBOW (LINE 554&555).
  - SC57 & SC58 ARE DESIGN CLASS II & ARE SEISMICALLY ANALYZED IN ACCORDANCE WITH DESIGN CRITERIA MEMORANDUM M61.
  - MAIN STEAM LEAD DRIP POT DRAIN PIPING SHALL BE IN ACCORDANCE WITH DC-049063 TYPE V.
  - 1/2", P0722732, ITEM 1.
  - VELAN B 12 205 4P-02TS (33-B)
  - DELETED.
  - DELETED.
  - INSP PORT ASSY VALVE RECORD NO. 6006473-39 (31-A/B)
  - 1" VELAN CHECK VALVE DWG. #DC-6006473-169 STOCK #93-2915. (31-B)
  - TEMPORARY PRESSURE TRANSDUCER AND GAUGE FOR TESTING OF FCV-95. (31-B)
  - 4" PIPE IS SCH 80 ASME SA 106, GR. B. (31-B)
  - 4" 900" RJWN FLANGE. (31-B)
  - 4" - 900" DD, GATE, BW ANCHOR/DARLING DWG. 6011930-7 & 8 RPE P-7385. (31-B)
  - 1" - 1500" GLOBE KEROTEST, SC#94-3775 DWG. 6006473-142. (31-B)
  - 1" SPECTACLE FLANGE ANSI 600\*, GREENWOOD, DC-6012369-1. (30-C)
- NOTES CONT AT 53-B



- NOTES: (CONT.)**
- VALVE S/C 93-6847 DWG. DC-6006473-40. VALVES WHEN REPLACED MUST BE INSTALLED WITH THE MAIN STEAM PRESSURE UNDER THE DISC. (30-C) (30-A)
  - 1" 600" GLOBE VALVE, RECORD NO. 6006473-40. (31-B)
  - 3/4" - 1500" GLOBE VALVE, KEROTEST S/C#94-3774 DWG. (31-B)
  - DELETED
  - DELETED
  - DELETED
  - FOR SPECTACLE PLATE DETAIL, SEE DRAWING 066142. (30-C) (30-A)
  - MAIN STEAM PIPING DOWN-STREAM OF MSIV'S (FCV-41, 42, 43 & 44) TO THE G-LINE ANCHOR AT THE TURBINE BUILDING WALL IS SEISMICALLY ANALYZED.
  - PORTIONS OF COLD REHEAT LINES I.D. CLAD W/ S.S. REF. A0401197 & A0466559. (33-B)
  - PORTIONS OF LINES 3414, 3434, 6081 AND 6082 INCLUDE LG PIPE FOR ENHANCED EROSION/CORROSION. REFER TO APPLICABLE PIPING ISOMETRIC DRAWINGS FOR LOCATIONS.
  - SC NOZZLE NUMBERS ARE FOR RSGS. SEE 6021772-7d FOR CROSS REFERENCE TABLE FOR OSB NOZZLE NUMBERS.

**UNIT 1**

**DIABLO CANYON POWER PLANT - PG&E CO.**

**TURBINE STEAM SUPPLY SYSTEM**

| DRAWING | SHEET | PAGE | REV |
|---------|-------|------|-----|
| 102004  | 5     | 0    | 120 |