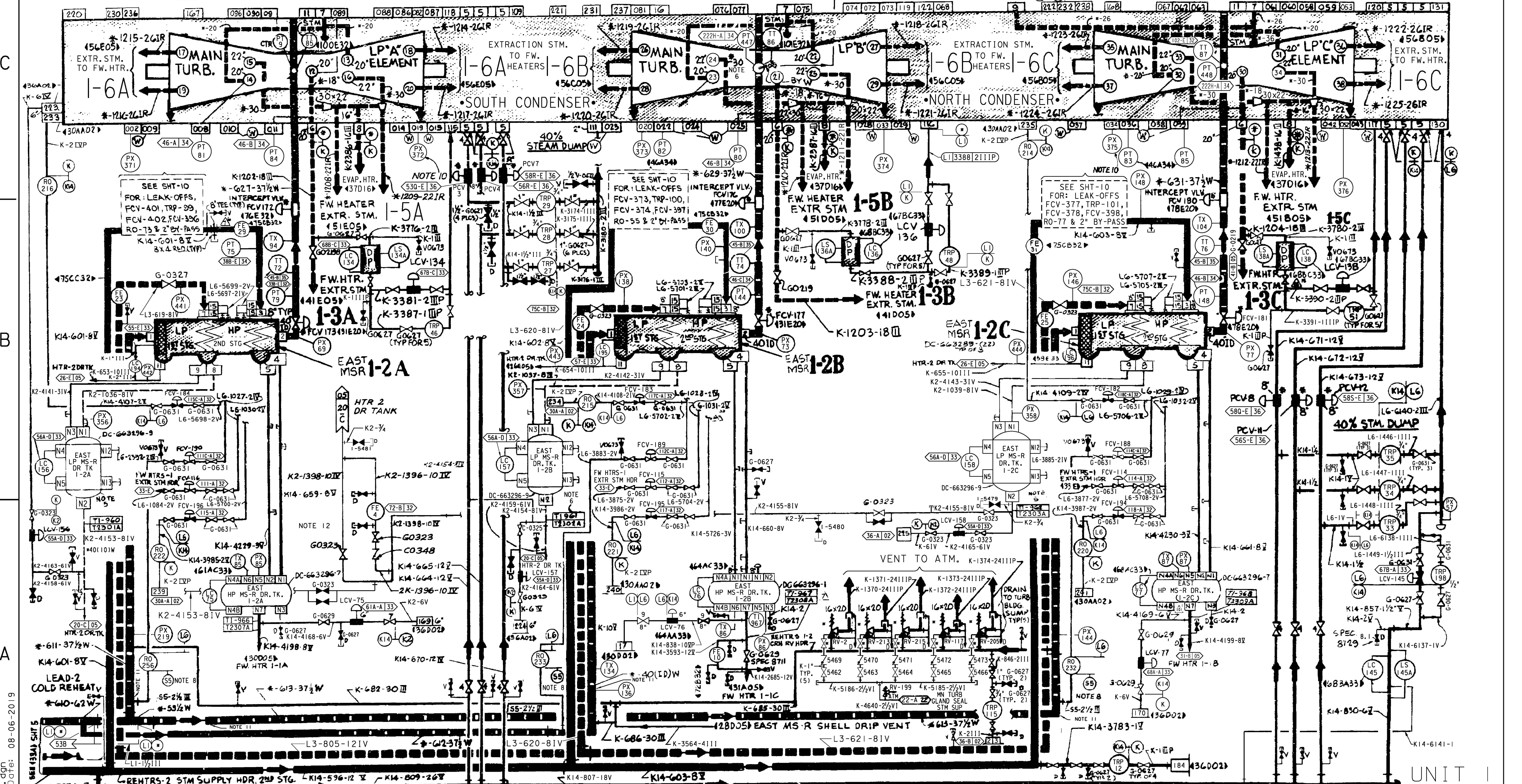


FLOW LINE LEGEND

HIGH PRESSURE STEAM & CONDENSATE  
LOW PRESSURE STEAM & CONDENSATE



RASTER=102004-6-0.dgn  
DCN=102004-6-0.dgn  
CAD User: ZNS4 Date: 08-06-2019

NOTES:  
1. PG&E CODE CLASS [E] MANUAL & MOTOR OPERATED VALVES WITH ITEM NO. ARE UNDER SPEC. 8762.  
2. ON ALL TRAP & LCV DRAINS FULL INSULATION IS USED UP STREAM AND PERSONNEL PROTECTION DOWNSTREAM.  
3. [W] DENOTES WESTINGHOUSE NOZZLE.

4. ALL PIPING THIS SHEET: PG&E CODE CLASS [E].  
5. ADDITIONAL INST. & NOZZLES FOR LP MS-R DRAIN TANK  
6. NOZZLE SAMPLE DAB BY WESTINGHOUSE (DWG. DC-663280-65) [36-C]  
7. 1" VOGT GLOBE VALVE SER 12141P HF 800 W.P. [37-C]

LP MS-R DRAIN TK	LI	LS(LOA)	LS(MIA)
1-2A	256	256A	256B
1-2B	257	257A	257B
1-2C	258	258A	258B

8. 2 1/2" PIPING DENOTED IS PG&E PIPING SPEC. S5 EXCEPT SOCKET WELDING ENDS ARE USED AT ELBOWS.  
9. DELETED

10. COND. N<sub>2</sub> INJ. FOR DISSOLVED O<sub>2</sub> CONT. IS THRU PX-372 & PX-375. FOR N<sub>2</sub> SUPPLY SEE SYSTEM 05 (102005, COORD. 78-D) [38-B]  
11. PORTIONS OF COLD REHEAT LINE I.D. CLAD W/ S.S. REF: A0401197/A0466559. [34/36/38]  
12. VALVE DELETED.

DIABLO CANYON POWER PLANT - PG&E CO.  
TURBINE STEAM SUPPLY SYSTEM

DRAWING	SHEET	PAGE	REV
102004	6	0	10