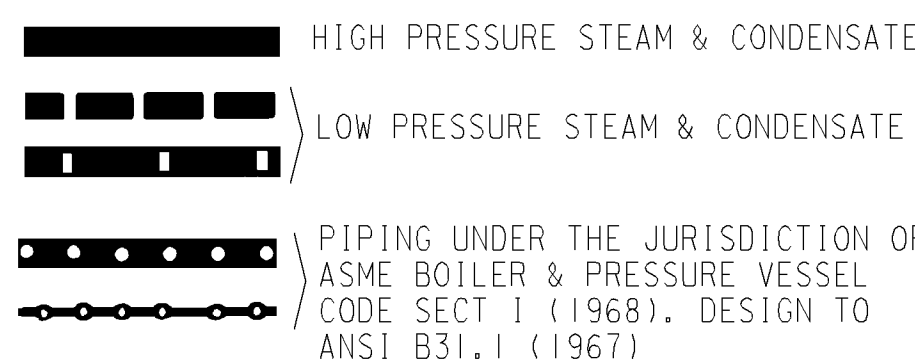


NOTES

- LIMITS OF ASME BOILER AND PRESSURE VESSEL CODE SECTION 1 (1968) JURISDICTION. MANUAL AND MOTOR OPERATED VALVES WITH ITEM NUMBER AND WITHIN THE LIMITS ARE UNDER SPEC 8729.
- MANUAL VALVES WITH ITEM NUMBER ON CLASS E LINES ARE UNDER SPEC 8762 EXCEPT AS NOTED.
- MANUAL VALVES WITH ITEM NUMBER ON CLASS C LINES ARE UNDER SPEC 8729.
- ON ALL TRAPS & LCV DRAINS FULL INSULATION IS USED UPSTREAM & PERSONNEL PROTECTION DOWNSTREAM
- DELETED
- ALL STEAM TRAPS ARE TO HAVE INTEGRAL STEAM STRAINERS.
- CHECK VALVE IS QA CLASS 'Q', DESIGN CLASS I AND WELDED TO ISOLATION VALVE. BOTH ARE UNDER SPEC. 8721.
- MANUAL VALVES WITH THIS NOTE SHALL BE DC-603125-3 (4R-60314) 431-D
- SC-59 AND SC-60 ARE DESIGN CLASS II AND ARE SEISMICALLY ANALYZED IN ACCORDANCE WITH DESIGN CRITERIA MEMORANDUM M-61 32-D/E
- VALVES PER P.O. 4R-59911, M.C. #7 31-D/E
- VOGT #SW2821, 33-E
- VELAN B-12-205-4P-02TS 33-D
- N<sub>2</sub> BLANKETING TUBING SEISMICALLY SUPPORTED CONTINUED ON 30-D
- HANCOCK, MOD. 950W 32-C/D/E
- VELAN VALVE, S/C93-6846 DWG.6006473-269 30-E
- DELETED 30-C
- DC-6006473-39, S/C 93-6840 30-D
- 3/4" GLOBE VALVE, S/C 93-6846 AND DWG.6006473-40 30-C
- DELETED
- MAIN STEAM PIPING DOWNSTREAM OF MSIV'S (FCV-41, 42, 43, & 44) TO THE G-LINE ANCHOR AT THE TURBINE BUILDING WALL IS SEISMICALLY ANALYZED
- ROCKWELL MODEL 848YT2, DWG.DC-663164-10
- CAL SIL INSULATION REPLACED WITH BLANKET INSULATION FOR 90° ELBOWS AT ELEV. 129' (LINE 556 & 557) AND FROM THE FEEDWATER NOZZLE TO JUST BELOW THE FIRST 90° ELBOW (LINE 556 & 557). 30-C/D
- VALVE, DWG.6000235-71 30-C/D/E
- DELETED
- 3/4" GLOBE VALVE S/C 95-4677 AND DWG. 6011929-42 30-D 32-E
- 3" GATE VALVE S/C 71-8125 31-E
- R.O. DISCHARGE IMPACT ZONES CLAD WITH INCONEL 33-D 33-E
- SG NOZZLE NUMBERS ARE FOR THE REPLACEMENT SG'S. REFER TO DWG DC 6021772-7D FOR A CROSS-REFERENCE TABLE FOR THE ORIGINAL SG NOZZLE NUMBERS.

FLOW LINE LEGEND

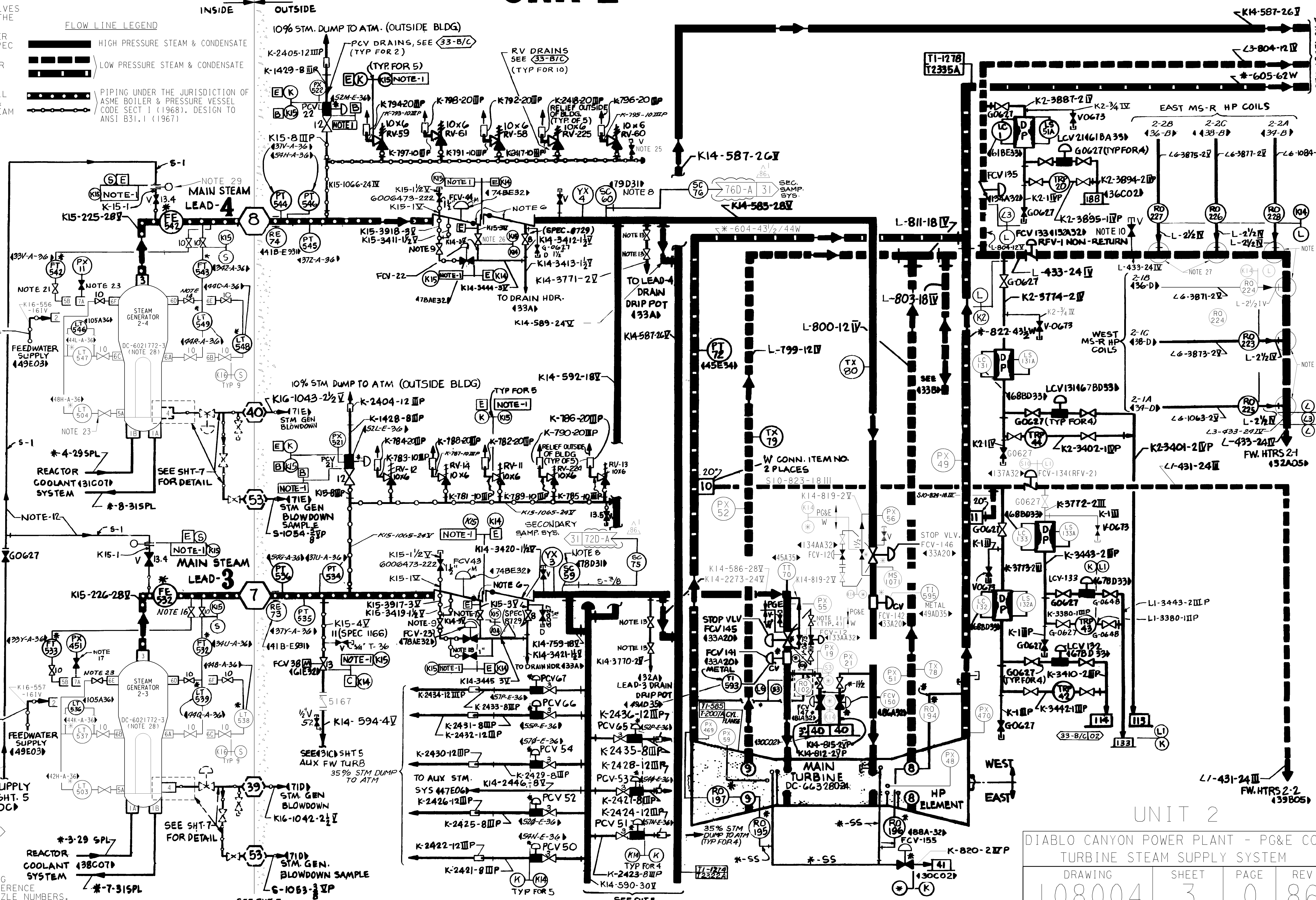


REACTOR CONTAINMENT

UNIT 2

NOTE (CONT.):

29. FOR SPECTACLE PLATE DETAIL SEE DRAWING 066142.



UNIT 2

DIABLO CANYON POWER PLANT - PG&E CO.

TURBINE STEAM SUPPLY SYSTEM

DRAWING	SHEET	PAGE	REV
108004	3	0	86

08-05-2015	ZNS4	KJD3	N/A	NOT REQUIRED PER CF3.1D5					REVISED PER DFT-7*3147
DATE	DWN	RE	IV	PROFESSIONAL ENGINEER	PE DISC.	PE#	PE EXP.		