

A

B

C

D

E

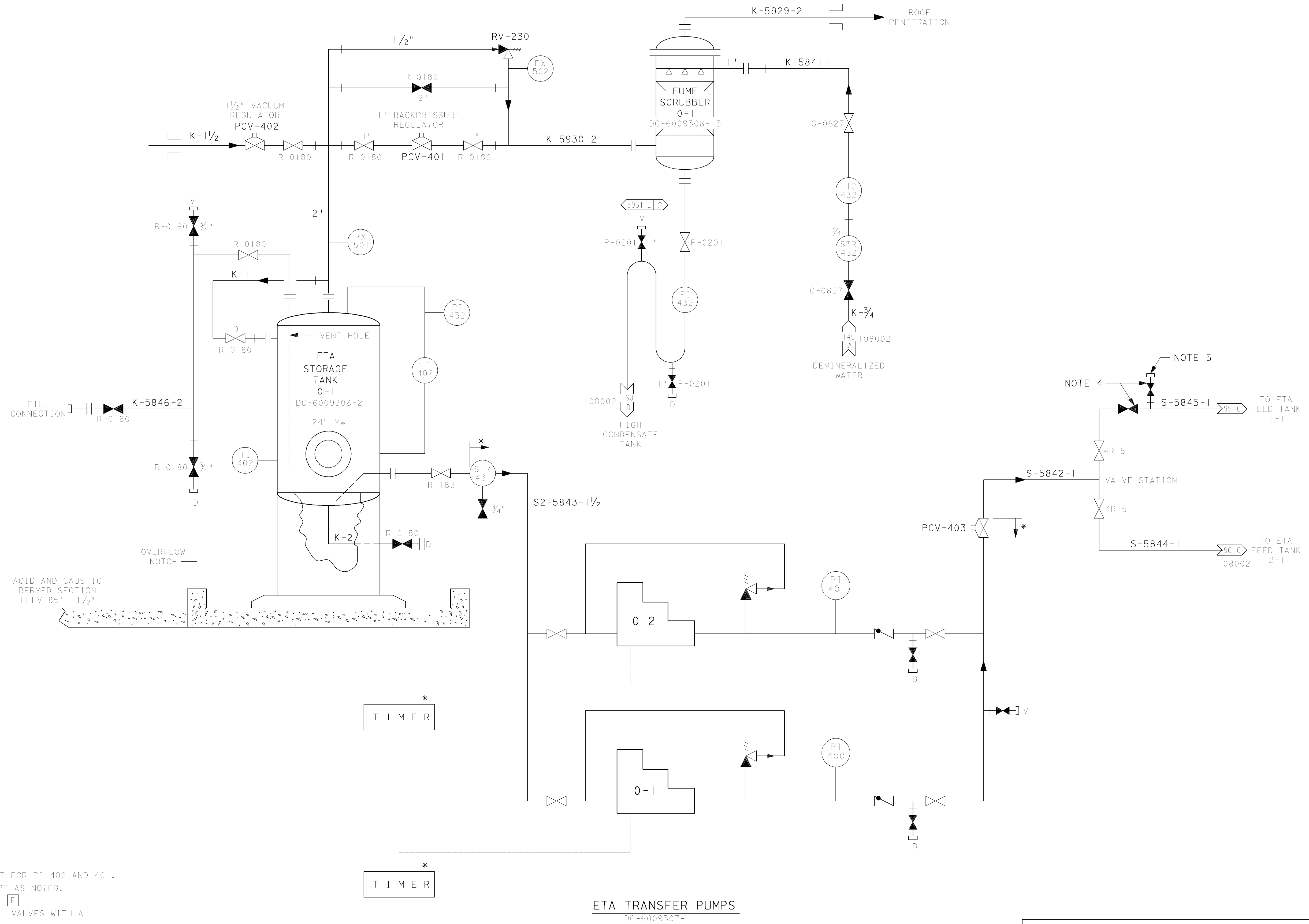
A

B

C

D

E



- NOTES**
- * DENOTES VENDOR SUPPLIED PACKAGE EXCEPT FOR PI-400 AND 401.
 - ALL VENTS AND DRAINS ARE 1/2" SIZE, EXCEPT AS NOTED.
 - ALL PIPINGS ON THIS SHEET IS CODE CLASS **E**
 - VALVES ARE WHITEY MODEL SS-65TSW16T BALL VALVES WITH A TEFLON O-RING KIT.
 - CONNECTION IS FOR TEMPORARY CHEMICAL INJECTION TEST CONNECTION. THREADED CAP ON END OF PIPE.

ETA TRANSFER PUMPS
DC-6009307-1

UNIT 1

P G & E CO.		102002	REV. 103
SHEET 9A	PAGE 0		

5/4/99	CMG9	FXC2	-	KERSI J. DALAL	MECHANICAL	M 16690	3/31/2000	Enhanced per FCT 023917
DATE	DWN	RE	IV	PROFESSIONAL ENGINEER	PE DISC.	PE#	PE EXP.	

CAD User: CMG9 Date: 4-29-1999
 DGN: 2002S9A.DGN