

MAIN CONDENSER TUBE SHEET SALT WATER LEAK DETECTION SYSTEM

E

D

C

B

A

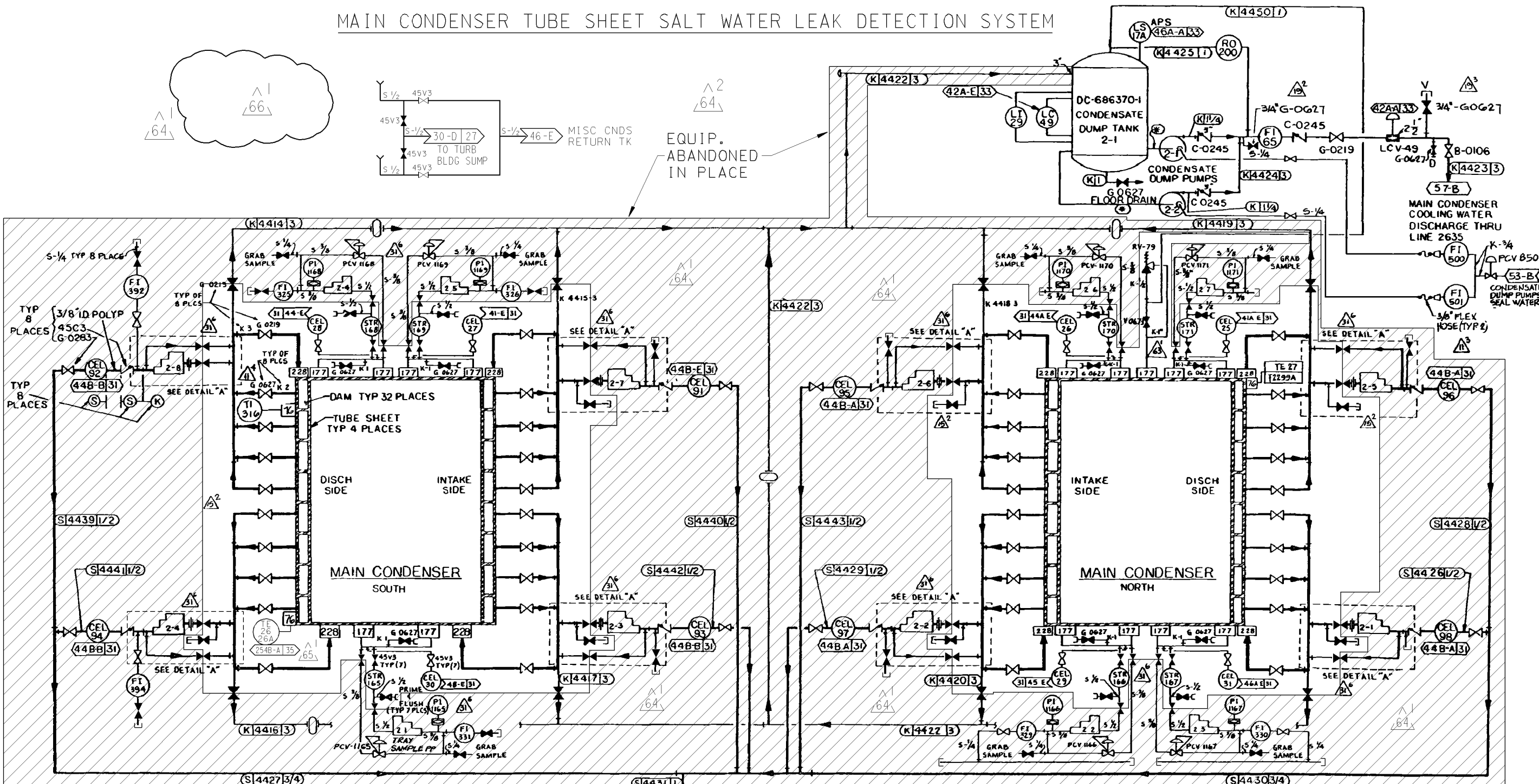
E

D

C

B

A



CONDENSER SAMPLE PUMP	CONDENSER ACCESS	INSTRUMENTS					GRAVITY SAMPLE INSTRUMENTS	
2-1	NW	CEL 98	FI 398	PI 1172	PCV 1172	STR 172	CEL 198	FI 1198
2-2	NW	CEL 97		PI 1173	PCV 1173	STR 173	CEL 197	FI 1197
2-3	SW	CEL 93		PI 1174	PCV 1174	STR 174	CEL 193	FI 1193
2-4	SW	CEL 94	FI 394	PI 1175	PCV 1175	STR 175	CEL 194	FI 1194
2-5	NE	CEL 96		PI 1176	PCV 1176	STR 176	CEL 196	FI 1196
2-6	NE	CEL 95		PI 1177	PCV 1177	STR 177	CEL 195	FI 1195
2-7	SE	CEL 91		PI 1178	PCV 1178	STR 178	CEL 191	FI 1191
2-8	SE	CEL 92	FI 392	PI 1179	PCV 1179	STR 179	CEL 192	FI 1192

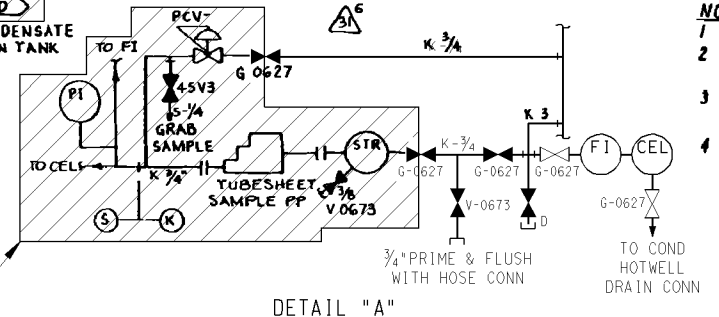
CONDENSER TUBESHEET SAMPLES

EQUIP. ABANDONED IN PLACE

EQUIP. ABANDONED IN PLACE

EQUIP. ABANDONED IN PLACE

- NOTES
- 1 ALL PIPING SHOWN ON THIS SHEET SHALL BE PG&E CODE CLASS E
 - 2 ALL ANALYZER SENSORS (CEL) SHALL BE INSTALLED AS CLOSE AS POSSIBLE TO INSTR SUPPLY PUMPS
 - 3 THE WORD "TYPICAL" AS USED ON THIS SHEET DENOTES VALVES, PIPING, ETC WITH THE SAME SPECIFICATION AND FUNCTION
 - 4 FOR CONDENSER TRAY CONNECTIONS SEE DC 663041 IS 113-D



DETAIL "A"

UNIT 2

DIABLO CANYON POWER PLANT - PG&E CO. CONDENSATE SYSTEM

DRAWING	SHEET	PAGE	REV
108002	11	0	66

RASTER=108002.s11.dgn
 DGN=108002.s11.dgn
 CAD User: RxG2 Date: 12-09-2008

INPG1C
I Size

12-09-2008	RxG2	Fxc2		ALAN GLEN BARTA	ELECTRICAL	E 9271	9/30/2009	REVISED PER DDN-2*24-0
DATE	DWN	RE	IV	PROFESSIONAL ENGINEER	PE DISC.	PE#	PE EXP.	