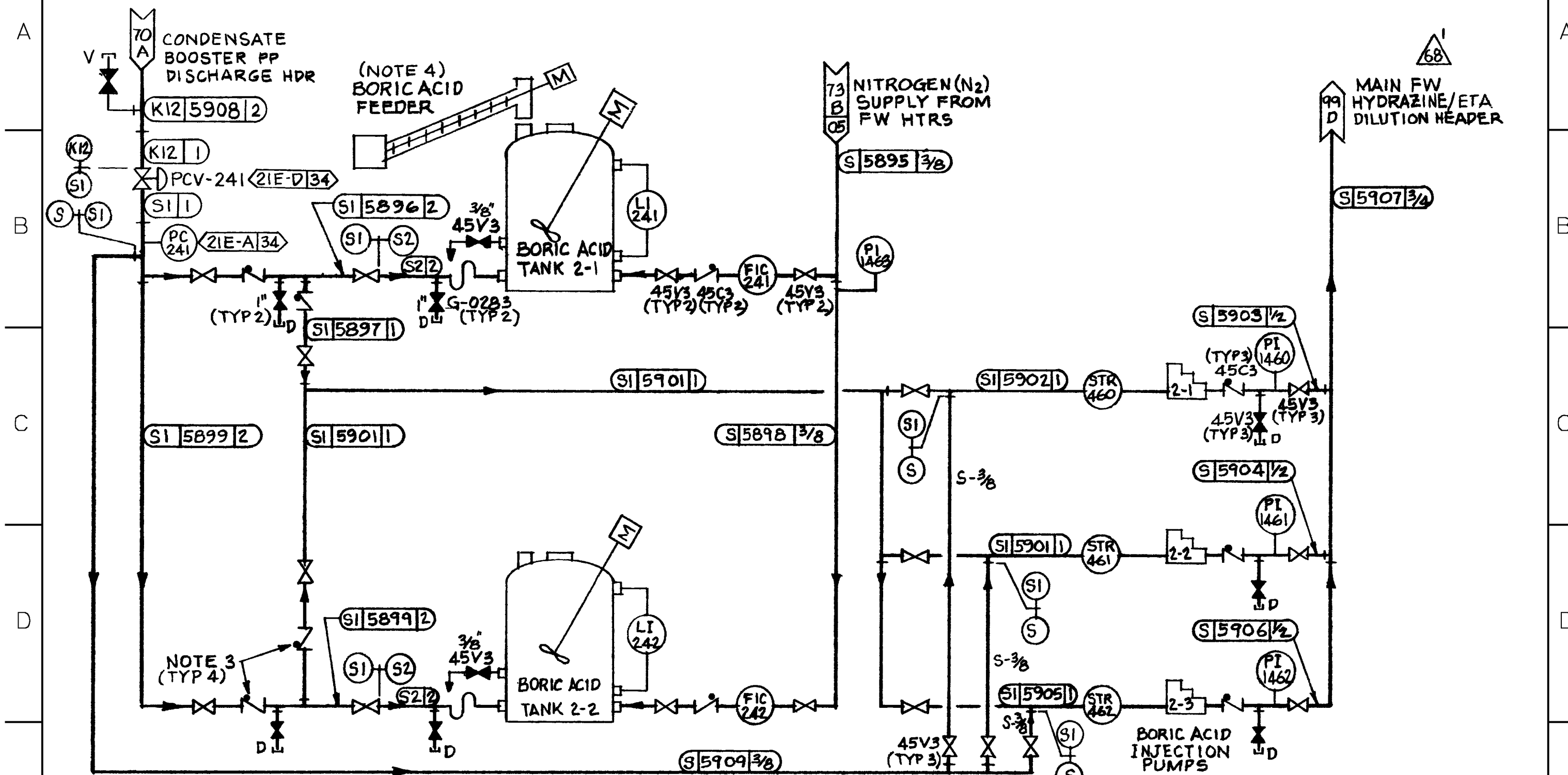


BORIC ACID INJECTION SUB-SYSTEM



NOTES:

1. ALL STOP VALVES ON THIS SHEET ARE GLOBE VALVES, PG&E VALVE SPEC MARK NO V-0301 UNLESS NOTED.
2. PROVIDE LOW POINT DRAINS ON 2" SUPPLY LINES.
3. CHECK VALVES ARE LADISH MOD. 5371. (80A-D)
4. THIS SWINGS & IS SHARED BY BORIC ACID TANKS 2-1 & 2-2 (82A-A)
5. ALL PIPING SHOWN ON THIS SHEET SHALL BE PG&E CODE CLASS "E" (62)

CAD User: RXG2 Date: 10-06-2000
 DGN=8002S8A.DGN
 RASTER=8002S8A.TIF

INPGIC

10/6/00	RXG2	NDNI	-	KERSI J. DALAL	MECHANICAL	M 16690	3/31/2004	Revised per FCT 025183
DATE	DWN	RE	IV	PROFESSIONAL ENGINEER	PE DISC.	PE#	PE EXP.	

UNIT 2

PG & E CO.		108002	REV. 69
SHEET 8A	PAGE 0		