

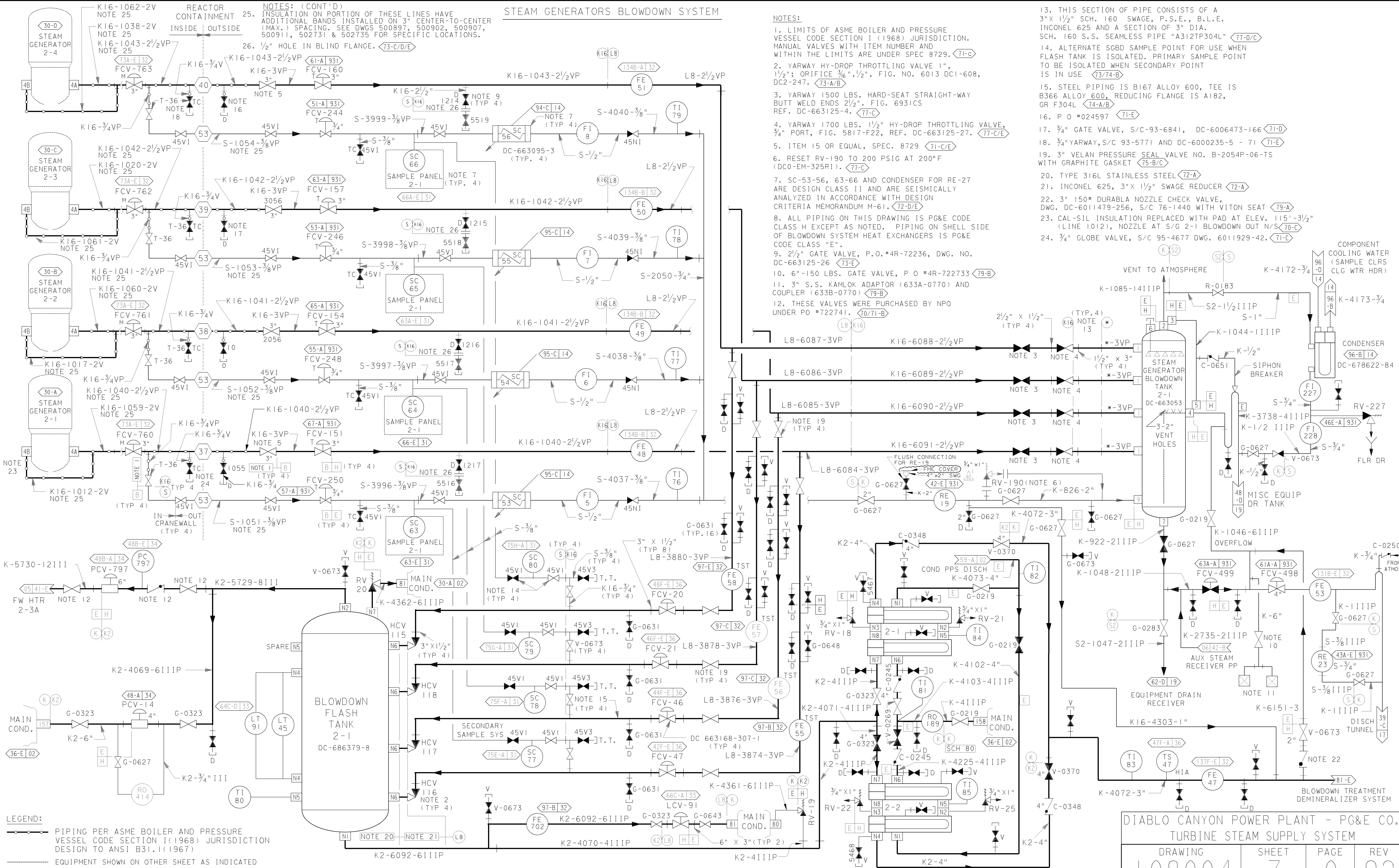
STEAM GENERATORS BLOWDOWN SYSTEM

NOTES: (CONT'D)  
 25. INSULATION ON PORTION OF THESE LINES HAVE ADDITIONAL BANDS INSTALLED ON 3" CENTER-TO-CENTER (MAX.) SPACING. SEE DWGS 500897, 500902, 500907, 500911, 502731 & 502735 FOR SPECIFIC LOCATIONS.  
 26. 1/2" HOLE IN BLIND FLANGE. (73-C/D/E)

NOTES:

- LIMITS OF ASME BOILER AND PRESSURE VESSEL CODE SECTION I (1968) JURISDICTION. MANUAL VALVES WITH ITEM NUMBER AND WITHIN THE LIMITS ARE UNDER SPEC 8729. (71-C)
- YARWAY HY-DROP THROTTLING VALVE 1", 1 1/2"; ORIFICE 3/8", 1/2", FIG. NO. 6013 DC1-608, DC2-247. (73-A/B)
- YARWAY 1500 LBS. HARD-SEAT STRAIGHT-WAY BUTT WELD ENDS 2 1/2". FIG. 6931CS REF. DC-663125-4. (77-C)
- YARWAY 1700 LBS. 1 1/2" HY-DROP THROTTLING VALVE, 3/4" PORT, FIG. 5817-F22, REF. DC-663125-27. (77-C/E)
- ITEM 15 OR EQUAL, SPEC. 8729 (71-C/E)
- RESET RV-190 TO 200 PSIG AT 200°F (DC0-EM-325R1). (77-C)
- SC-53-56, 63-66 AND CONDENSER FOR RE-27 ARE DESIGN CLASS II AND ARE SEISMICALLY ANALYZED IN ACCORDANCE WITH DESIGN CRITERIA MEMORANDUM M-61. (72-D/E)
- ALL PIPING ON THIS DRAWING IS PG&E CODE CLASS H EXCEPT AS NOTED. PIPING ON SHELL SIDE OF BLOWDOWN SYSTEM HEAT EXCHANGERS IS PG&E CODE CLASS "E".
- 2 1/2" GATE VALVE, P.O.#4R-72236, DWG. NO. DC-663125-26 (73-E)
- 6" -150 LBS. GATE VALVE, P O #4R-722733 (79-B)
- 3" S.S. KAMLOK ADAPTOR (633A-0770) AND COUPLER (633B-0770) (79-B)
- THESE VALVES WERE PURCHASED BY NPO UNDER PO #722741. (70/71-B)

- THIS SECTION OF PIPE CONSISTS OF A 3" X 1 1/2" SCH. 160 SWAGE, P.S.E., B.L.E. INCONEL 625 AND A SECTION OF 3" DIA. SCH. 160 S.S. SEAMLESS PIPE "A312TP304L" (77-D/C)
- ALTERNATE SGBD SAMPLE POINT FOR USE WHEN FLASH TANK IS ISOLATED. PRIMARY SAMPLE POINT TO BE ISOLATED WHEN SECONDARY POINT IS IN USE (73/74-B)
- STEEL PIPING IS B167 ALLOY 600, TEE IS B366 ALLOY 600, REDUCING FLANGE IS A182, GR F304L (74-A/B)
- P O #024597 (71-E)
- 3/4" GATE VALVE, S/C-93-6841, DC-6006473-166 (71-D)
- 3/4" YARWAY, S/C 93-5771 AND DC-6000235-5 - 71 (71-E)
- 3" VELAN PRESSURE SEAL VALVE NO. B-2054P-06-TS WITH GRAPHITE GASKET (75-B/C)
- TYPE 316L STAINLESS STEEL (72-A)
- INCONEL 625, 3" X 1 1/2" SWAGE REDUCER (72-A)
- 3" 150# DURABLE NOZZLE CHECK VALVE, DWG. DC-6011479-256, S/C 76-1440 WITH VITON SEAT (79-A)
- CAL-SIL INSULATION REPLACED WITH PAD AT ELEV. 115'-3/2" (LINE 1012), NOZZLE AT S/G 2-1 BLOWDOWN OUT N/S (70-C)
- 3/4" GLOBE VALVE, S/C 95-4677 DWG. 6011929-42. (71-C)



LEGEND:  
 PIPING PER ASME BOILER AND PRESSURE VESSEL CODE SECTION I (1968) JURISDICTION DESIGN TO ANSI B31.1 (1967)  
 EQUIPMENT SHOWN ON OTHER SHEET AS INDICATED

DIABLO CANYON POWER PLANT - PG&E CO.  
 TURBINE STEAM SUPPLY SYSTEM

DRAWING	SHEET	PAGE	REV
108004	7	0	92

04-21-2016	ZNS4	FxC2	N/A	NOT REQUIRED PER CF3.1D5				REVISED PER DDT-4*1401
DATE	DWN	RE	IV	PROFESSIONAL ENGINEER	PE DISC.	PE#	PE EXP.	

RASTER=erul0597.dgn  
 DCN=erul0597.dwg  
 CAD User: ZNS4 Date: 04-21-2016