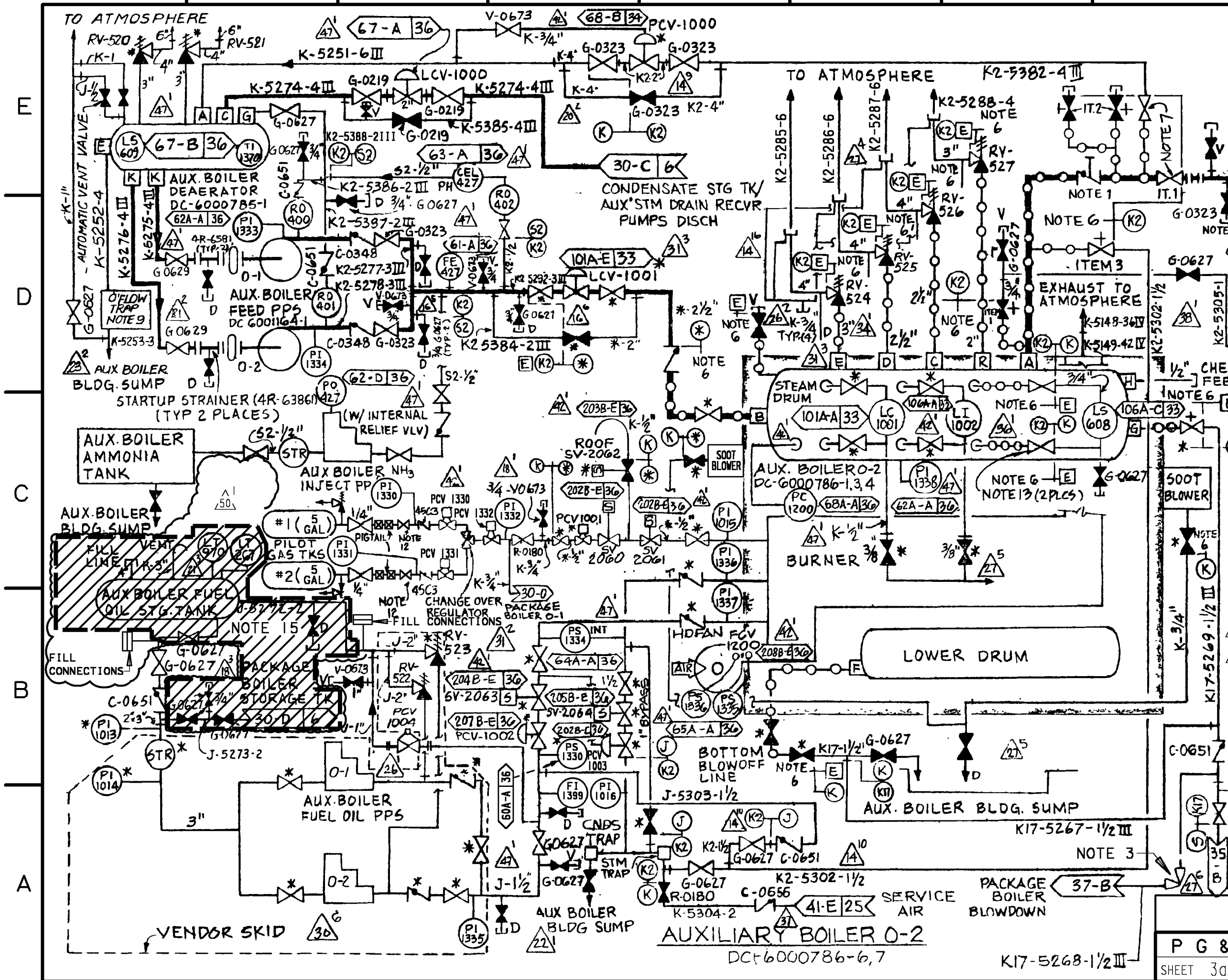


- NOTES:**
- ROCKWELL FIG. 3024 STOP CHECK VALVE ITEM 1-4R-64393 (37A-D)
  - ALL VENT VALVE V-0673, ALL DRAIN VALVE G-0627, UNLESS OTHERWISE NOTED.
  - YARWAY FIG. NO. 6013 (37A-A)
  - + VALVES SUPPLIED UNDER PG&E P.O. 4R-64641 CONFORMING TO ASME BOILER CODE SECTION I-1980 S80 ADD.
  - \* VENDOR SUPPLIED (44)
  - ALL PIPING ON THIS SHEET SHALL BE PG&E CLASS E EXCEPT WHEN NOTED.
  - ○ ○ DENOTES ASME BOILER CODE SECTION I PIPING -1980 S80 ADD.
  - VALVE SUPPLIED UNDER PG&E P.O. 4R-64394 CONFORMING TO ASME BOILER CODE SECTION I (37A-E)
  - FUTURE TAKE OFF FOR AUX STEAM.
  - OVERFLOW TRAP PER PG&E P.O. #4R-63853. (30A-D)
  - 1/2" YARWAY #720 STEAM TRAP P.O. 4R-64700 (38A-D)
  - YARWAY FIG. NO. 5515-B (1500 PSI)
  - 1/4" WHITEY NEEDLE VALVES, (38A-A)
  - SS-20VF4 OR EQUAL (32A-C)
  - 3/4" VELAN GATE VALVE W04-2054B, DWG. NO. 6006473 SH. 166 OR 222. (36A-C)
  - 1/2" YARWAY #721 STEAM TRAP, P.O. 081177 (38A-D)
  - UNDERGROUND TANK AND PIPING CLOSED PER DCO-EM-049122. PERMANENT CONNECTIONS PROVIDED TO FACILITATE CONNECTION OF TEMPORARY FUEL OIL SUPPLY. TANK FILLED WITH CONCRETE. FILL CONNECTIONS ARE LOCATED OUTSIDE AUX BLDG. ON N.E. CORNER. (31A-B)



PG & E CO.	102006	REV. 50
SHEET 3a	PAGE 0	

CAD User: CMG9 Date: 1-06-1999  
 DGN=2006S3A.DGN  
 RASTER=2006S3A.TIF

1/6/99	CMG9	RXG2	FCL2	FRANCIS C. LING	MECHANICAL	M 16098	12/31/1999	Revised per DCO-EM-049122-00
DATE	DWN	RE	IV	PROFESSIONAL ENGINEER	PE DISC.	PE#	PE EXP.	

INPGIC