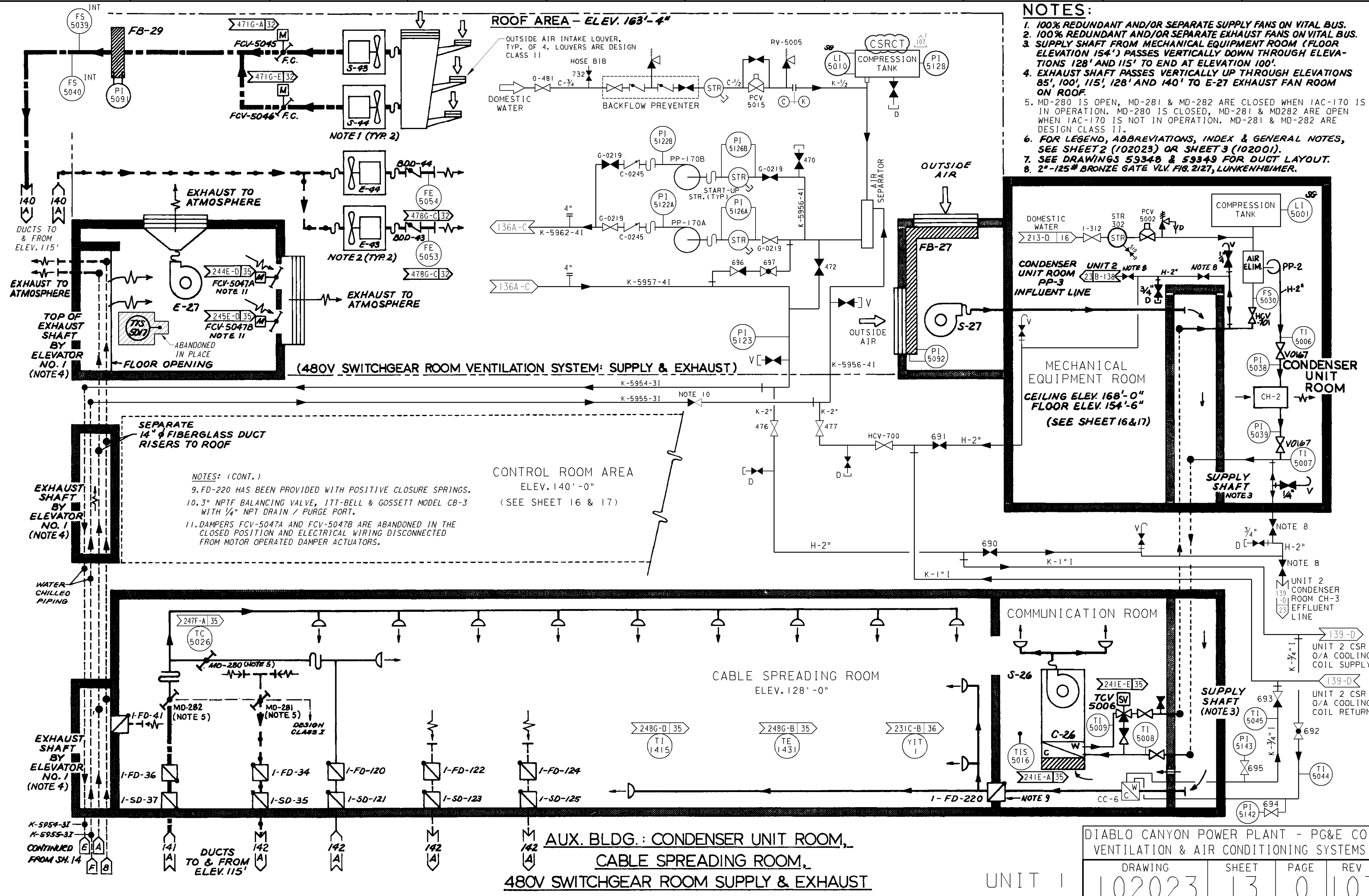


- NOTES:**
- 100% REDUNDANT AND/OR SEPARATE SUPPLY FANS ON VITAL BUS.
 - 100% REDUNDANT AND/OR SEPARATE EXHAUST FANS ON VITAL BUS.
 - SUPPLY SHAFT FROM MECHANICAL EQUIPMENT ROOM (FLOOR ELEVATION 154') PASSES VERTICALLY DOWN THROUGH ELEVATIONS 128' AND 115' TO END AT ELEVATION 100'.
 - EXHAUST SHAFT PASSES VERTICALLY UP THROUGH ELEVATIONS 85', 100', 115', 128' AND 140' TO E-27 EXHAUST FAN ROOM ON ROOF.
 - MD-280 IS OPEN, MD-281 & MD-282 ARE CLOSED WHEN IAC-170 IS IN OPERATION. MD-280 IS CLOSED, MD-281 & MD-282 ARE OPEN WHEN IAC-170 IS NOT IN OPERATION. MD-281 & MD-282 ARE DESIGN CLASS II.
 - FOR LEGEND, ABBREVIATIONS, INDEX & GENERAL NOTES, SEE SHEET 2 (102023) OR SHEET 3 (102001).
 - SEE DRAWINGS 59348 & 59349 FOR DUCT LAYOUT.
 - 2"-125# BRONZE GATE VLV. FIG. 2127, LUNKENHEIMER.

ROOF AREA - ELEV. 163'-4"



- NOTES: (CONT.)**
9. FD-220 HAS BEEN PROVIDED WITH POSITIVE CLOSURE SPRINGS.
 10. 3" NPTF BALANCING VALVE, ITT-BELL & GOSSETT MODEL CB-3 WITH 1/4" NPT DRAIN / PURGE PORT.
 11. DAMPERS FCV-5047A AND FCV-5047B ARE ABANDONED IN THE CLOSED POSITION AND ELECTRICAL WIRING DISCONNECTED FROM MOTOR OPERATED DAMPER ACTUATORS.

AUX. BLDG.: CONDENSER UNIT ROOM, CABLE SPREADING ROOM, 480V SWITCHGEAR ROOM SUPPLY & EXHAUST

UNIT 1

DIABLO CANYON POWER PLANT - PG&E CO.			
VENTILATION & AIR CONDITIONING SYSTEMS			
DRAWING	SHEET	PAGE	REV
102023	13	0	107

RASTER=102023s13.dgn
 DGN=102023s13.dgn
 CAD User: ZNS4 Date: 07-21-2017