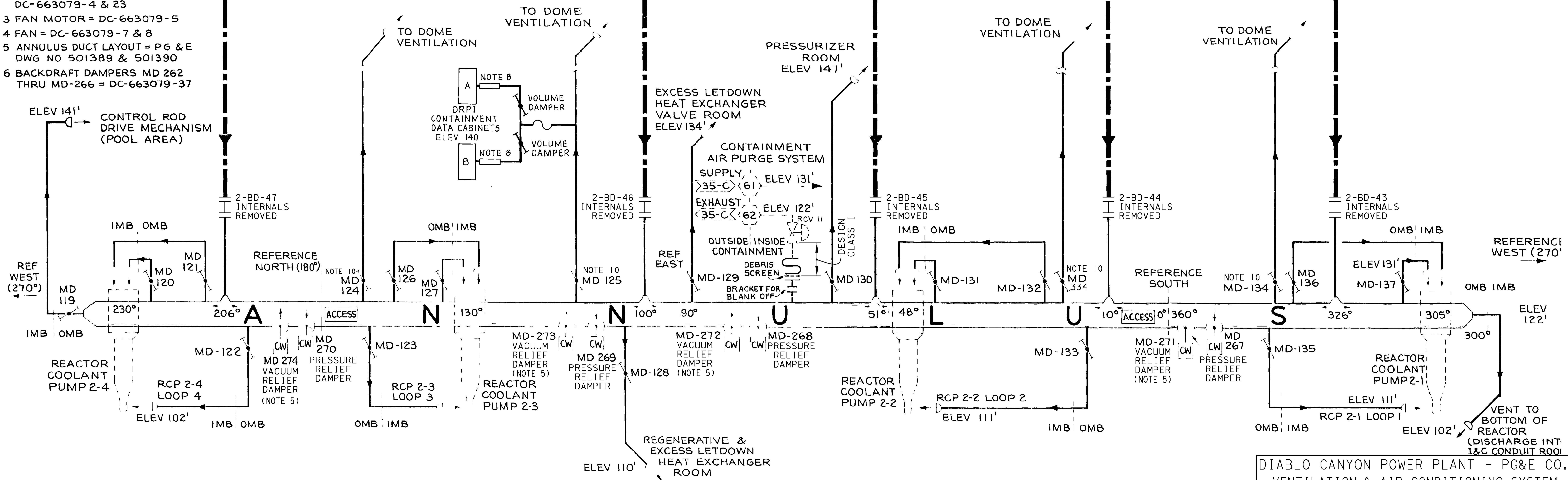
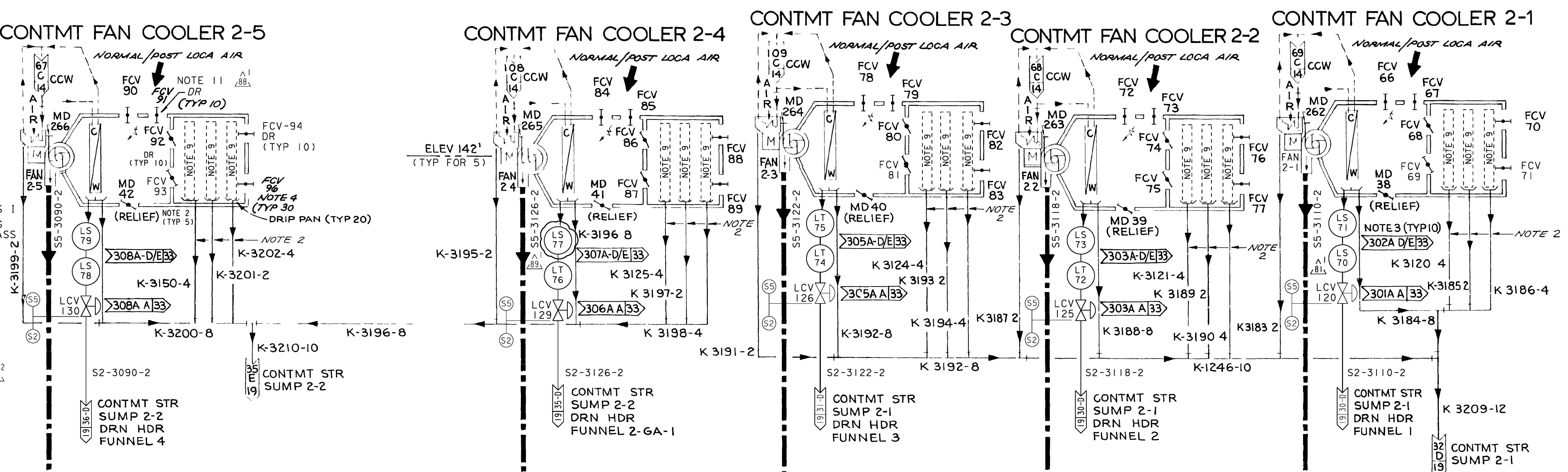


- NOTES**
- ALL PIPING ON THIS SHEET SHALL BE PG & E CLASS "E"
  - THREE DRAINS FROM MOISTURE SEPARATOR AND HEPA FILTER SECTIONS ARE PLUGGED WITH REMOVABLE TEST PLUG (S2, S5, S6, S8, S9-B)
  - LEVEL TRANSMITTERS MUST BE 10 FEET APART (S5-B)
  - DAMPERS ARE NO LONGER FLOW CONTROL DAMPERS (FCV) ACTUATORS HAVE BEEN REMOVED EXISTING TAG NUMBERS ARE MAINTAINED FOR SPECIFIC DAMPER IDENTIFICATION. (S2-A)
  - VACUUM RELIEF DAMPERS MD-271 THRU MD-274 ARE DESIGN CLASS 1
  - THE CONTAINMENT ANNULAR RING DUCT (ANNULUS) IS DESIGN CLASS 11, SEISMIC CATEGORY 1.
  - 
  - PROVISION FOR QUICK REMOVAL OF DUCT (S3-C)
  - PROVISIONS FOR MOISTURE SEPARATORS, HEPA FILTERS CARBON FLTRS & ROUGHING FLTRS - NOT INSTALLED.
  - DAMPERS NORMALLY CLOSED.
  - DAMPERS ARE LOCKED OPEN (THROTTLED), DR. (S8)
  - MD-262 THRU MD-266 INLET VANE DAMPERS ARE THROTTLED
- REFERENCES**
- REACTOR CONTAINMENT FAN COOLERS = DC-663079-22
  - FAN COOLER ENCLOSURE = DC-663079-4 & 23
  - FAN MOTOR = DC-663079-5
  - FAN = DC-663079-7 & 8
  - ANNULUS DUCT LAYOUT = PG & E DWG NO 501389 & 501390
  - BACKDRAFT DAMPERS MD 262 THRU MD-266 = DC-663079-37



**CONTAINMENT AIR CIRCULATION UNIT 2**

DIABLO CANYON POWER PLANT - PG&E CO.			
VENTILATION & AIR CONDITIONING SYSTEM			
DRAWING	SHEET	PAGE	REV
108023	5	0	89

10-17-2019	AJFJ	FXC2	N/A	NOT REQUIRED PER CF3.1D5	-	-	-	Revised Per DFT-7#4990
DATE	DWN	RE	IV	PROFESSIONAL ENGINEER	PE DISC.	PE#	PE EXP.	

RASTER=108023-5-0.dgn  
 DCN=108023-5-0.rvt  
 CAD User: AJFJ Date: 10-17-2019