

50A

51A

52A

53A

54A

55A

56A

57A

58A

59A

E

D

C

B

A

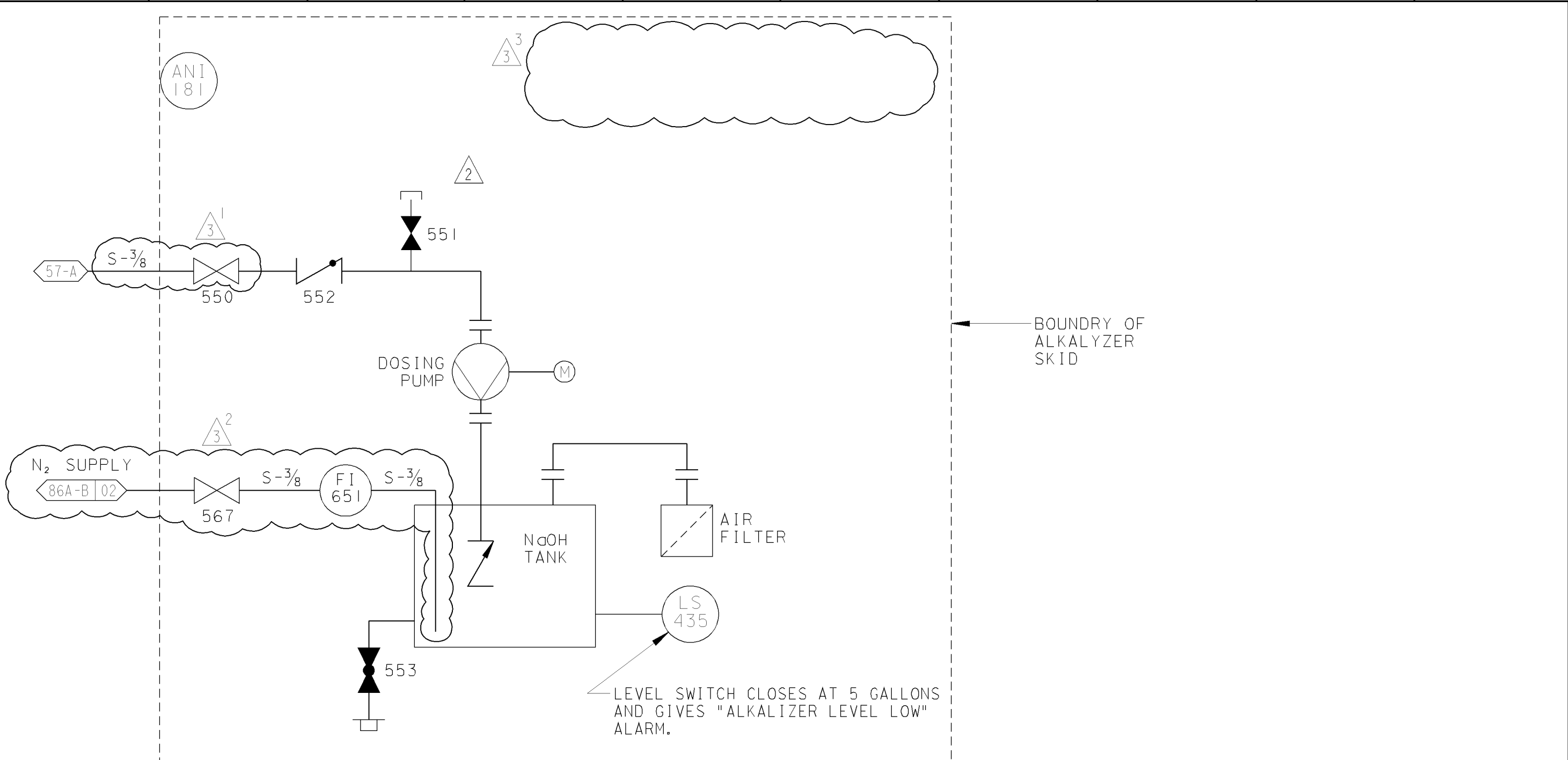
E

D

C

B

A



BOUNDARY OF
ALKALYZER
SKID

LEVEL SWITCH CLOSSES AT 5 GALLONS
AND GIVES "ALKALYZER LEVEL LOW"
ALARM.

UNIT I

DIABLO CANYON POWER PLANT - PG&E CO. TURBINE AND GENERATOR ASSOCIATED SYSTEMS			
DRAWING	SHEET	PAGE	REV
102022	5A	0	3

RASTER=102022.s5A.dgn
DGN=102022.s5A.dgn
CAD User: RXG2 Date:05-31-2007

INPG1C
1 Size

05-31-2007	RxG2	FxC2		KERSI J. DALAL	MECHANICAL	M 16690	3/31/2008	REVISED PER DCI-SJ-049814-00
DATE	DWN	RE	IV	PROFESSIONAL ENGINEER	PE DISC.	PE#	PE EXP.	