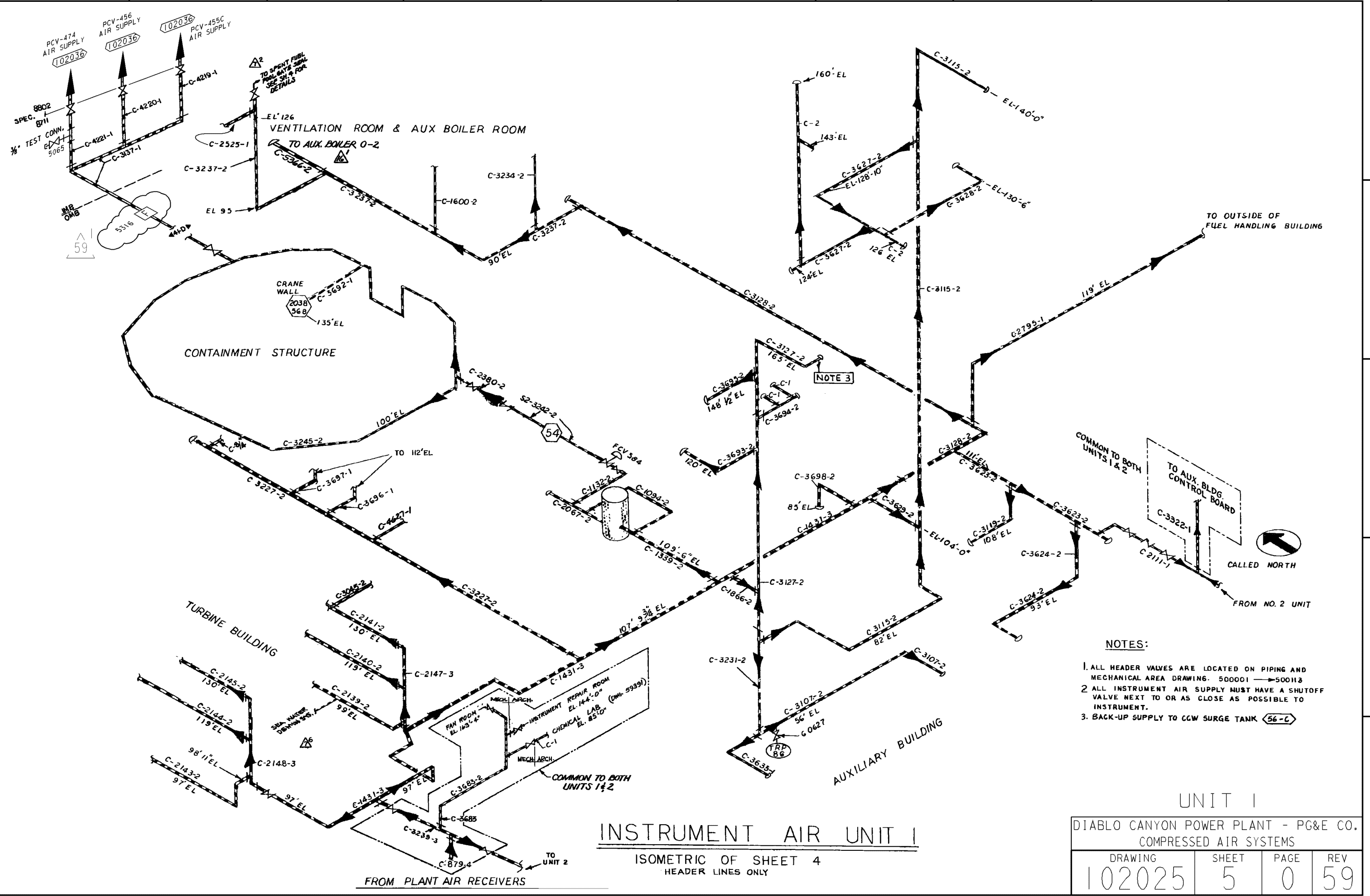


E  
D  
C  
B  
A

E  
D  
C  
B  
A



- NOTES:**
1. ALL HEADER VALVES ARE LOCATED ON PIPING AND MECHANICAL AREA DRAWING: 500001 -> 500113
  2. ALL INSTRUMENT AIR SUPPLY MUST HAVE A SHUTOFF VALVE NEXT TO OR AS CLOSE AS POSSIBLE TO INSTRUMENT.
  3. BACK-UP SUPPLY TO CGW SURGE TANK (56-C)

UNIT I

DIABLO CANYON POWER PLANT - PG&E CO.			
COMPRESSED AIR SYSTEMS			
DRAWING	SHEET	PAGE	REV
102025	5	0	59

RASTER=002e1226.DGN  
 DGN=002e1226.DGN  
 CAD User: PNWB Date: 11-17-2015

INPGIC  
1 Size

11-17-2015	PNWB	RxG2	Fxc2	NOT REQUIRED PER CF3.ID5	-	-	-	REVISED PER DFT-7*3406
DATE	DWN	RE	IV	PROFESSIONAL ENGINEER	PE DISC.	PE#	PE EXP.	