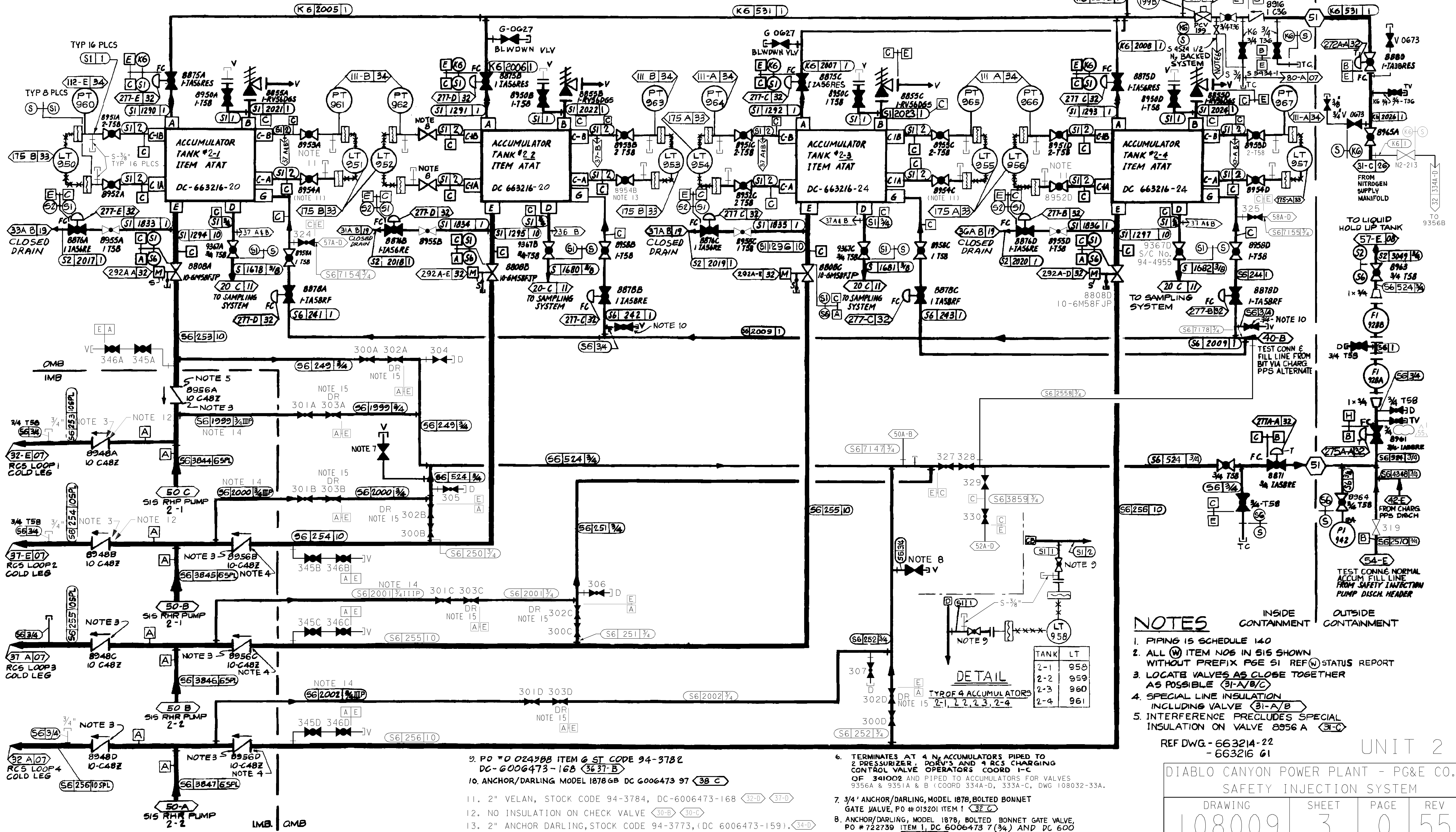


NOTES: (CONT'D)  
 14. INSULATION ON PORTIONS OF THESE LINES HAVE ADDITIONAL BANDS INSTALLED ON 3" CENTER-TO-CENTER (MAX.) SPACING, SEE DWG 226607, 226608, 226609, 226610 & 226573 FOR SPECIFIC LOCATIONS.  
 15. MECHANICAL TRAVEL STOP INSTALLED ON VALVES 302A-D & 303A-D TO LIMIT OPEN STEM TRAVEL (REF. DWG# 6011930-140, PAGE 3).



- NOTES**
1. PIPING IS SCHEDULE 140
  2. ALL (W) ITEM NOS IN SIS SHOWN WITHOUT PREFIX P6E SI REF (W) STATUS REPORT
  3. LOCATE VALVES AS CLOSE TOGETHER AS POSSIBLE (31-A/B/C)
  4. SPECIAL LINE INSULATION INCLUDING VALVE (31-A/B)
  5. INTERFERENCE PRECLUDES SPECIAL INSULATION ON VALVE 8956 A (31-C)
- INSIDE CONTAINMENT    OUTSIDE CONTAINMENT

**DETAIL**  
 TYP OF 4 ACCUMULATORS  
 NOTE 15

TANK	LT
2-1	958
2-2	959
2-3	960
2-4	961

9. PO #0 024988 ITEM 6 ST CODE 94-3782 DC-6006473-16B (36 37-B)
10. ANCHOR/DARLING MODEL 1878GB DC 6006473 97 (38 C)
11. 2" VELAN, STOCK CODE 94-3784, DC-6006473-168 (32-D) (37-D)
12. NO INSULATION ON CHECK VALVE (30-B) (30-D)
13. 2" ANCHOR DARLING, STOCK CODE 94-3773, (DC 6006473-159). (34-D)

6. TERMINATES AT 4 N<sub>2</sub> ACCUMULATORS PIPED TO 2 PRESSURIZER, PORV'S AND 4 RCS CHARGING CONTROL VALVE OPERATORS COORD I-C OF 341002 AND PIPED TO ACCUMULATORS FOR VALVES 9356A & 9351A & B (COORD 334A-D, 333A-C, DWG 108032-33A).
7. 3/4" ANCHOR/DARLING, MODEL 1878, BOLTED BONNET GATE VALVE, PO #013201 ITEM 1 (32 C)
8. ANCHOR/DARLING, MODEL 1878, BOLTED BONNET GATE VALVE, PO #722739 ITEM 1, DC 6006473 7 (3/4) AND DC 6006473 2 (2) (33 D 36 B)

REF DWG. - 663214-22  
 - 663216 G1

UNIT 2

DIABLO CANYON POWER PLANT - PG&E CO.  
 SAFETY INJECTION SYSTEM

DRAWING	SHEET	PAGE	REV
108009	3	0	55

RASTER=er04924.dgn  
 DGN=er04924.dgn  
 CAD User: MNRU Date: 07-23-2014