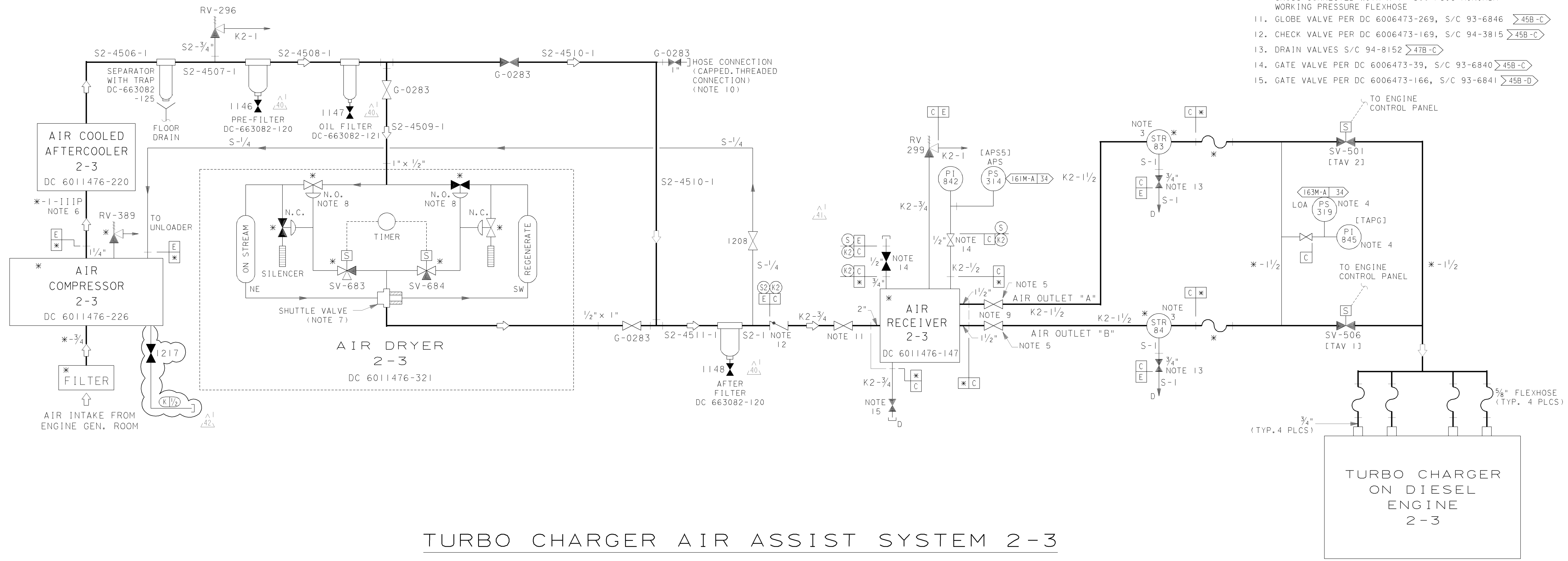


- NOTES:
- \* DENOTES MANUFACTURER SUPPLIED INSTRUMENTS & EQUIPMENT. IT IS ACCEPTABLE TO REPLACE MANUFACTURER SUPPLIED INSTRUMENT TUBING WITH PG&E SUPPLIED S-SPEC STAINLESS STEEL TUBING
  - FIELD PIPING ON THIS SYSTEM SHALL BE PG&E CLASS [C] UNLESS OTHERWISE NOTED
  - AIR RECEIVER OUTLET STRAINERS BE INSTALLED HORIZONTALLY >47B-B,C<
  - MOUNTED ON ENGINE CONTROL PANEL >48B-C<
  - 1/2" LUNKENHEIMER GLOBE VALVES, S/C 95-0939 >46B-C<
  - FIBERGLASS BLANKET TYPE PERSONNEL INSULATION. INSULATE VENDOR PIPING FROM COMPRESSOR OUTLET >40B-C< TO THE COOLER INLET.
  - ORIFICED SLIDER SHOWN IN POSITION CONTROLLING FLOWRATE FOR DRYER REGENERATION. >42B-C<
  - N.O. AIR TO CLOSE; N.C. AIR TO OPEN >42B-C<
  - K2 SPEC PIPING TO BE THREADED TO ACCOMMODATE BRONZE SOFT SEAT VALVES >46B-C<
  - TURBO CHARGER AND STARTING AIR RECEIVERS MAY BE CROSS-CONNECTED WITH A 1" 300 PSIG MINIMUM WORKING PRESSURE FLEXHOSE
  - GLOBE VALVE PER DC 6006473-269, S/C 93-6846 >45B-E<
  - CHECK VALVE PER DC 6006473-169, S/C 94-3815 >45B-C<
  - DRAIN VALVES S/C 94-8152 >47B-C<
  - GATE VALVE PER DC 6006473-39, S/C 93-6840 >45B-C<
  - GATE VALVE PER DC 6006473-166, S/C 93-6841 >45B-D<



TURBO CHARGER AIR ASSIST SYSTEM 2-3

REFERENCE MFR. DWG. DC-6011476-465

UNIT 2

DIABLO CANYON POWER PLANT - PG&E CO.			
DIESEL ENGINE-GENERATOR ASSOCIATED SYSTEMS			
DRAWING	SHEET	PAGE	REV
108021	4B	0	42

10-10-2011	AJFJ	RxG2		KERSI J. DALAL	MECHANICAL	M 16690	3/31/2012	REVISED PER DFT-7*1303
DATE	DWN	RE	IV	PROFESSIONAL ENGINEER	PE DISC.	PE#	PE EXP.	

RASTER=108021s4b.dgn  
 DGN=108021s4b.dgn  
 CAD User: AJFJ Date: 10-10-2011