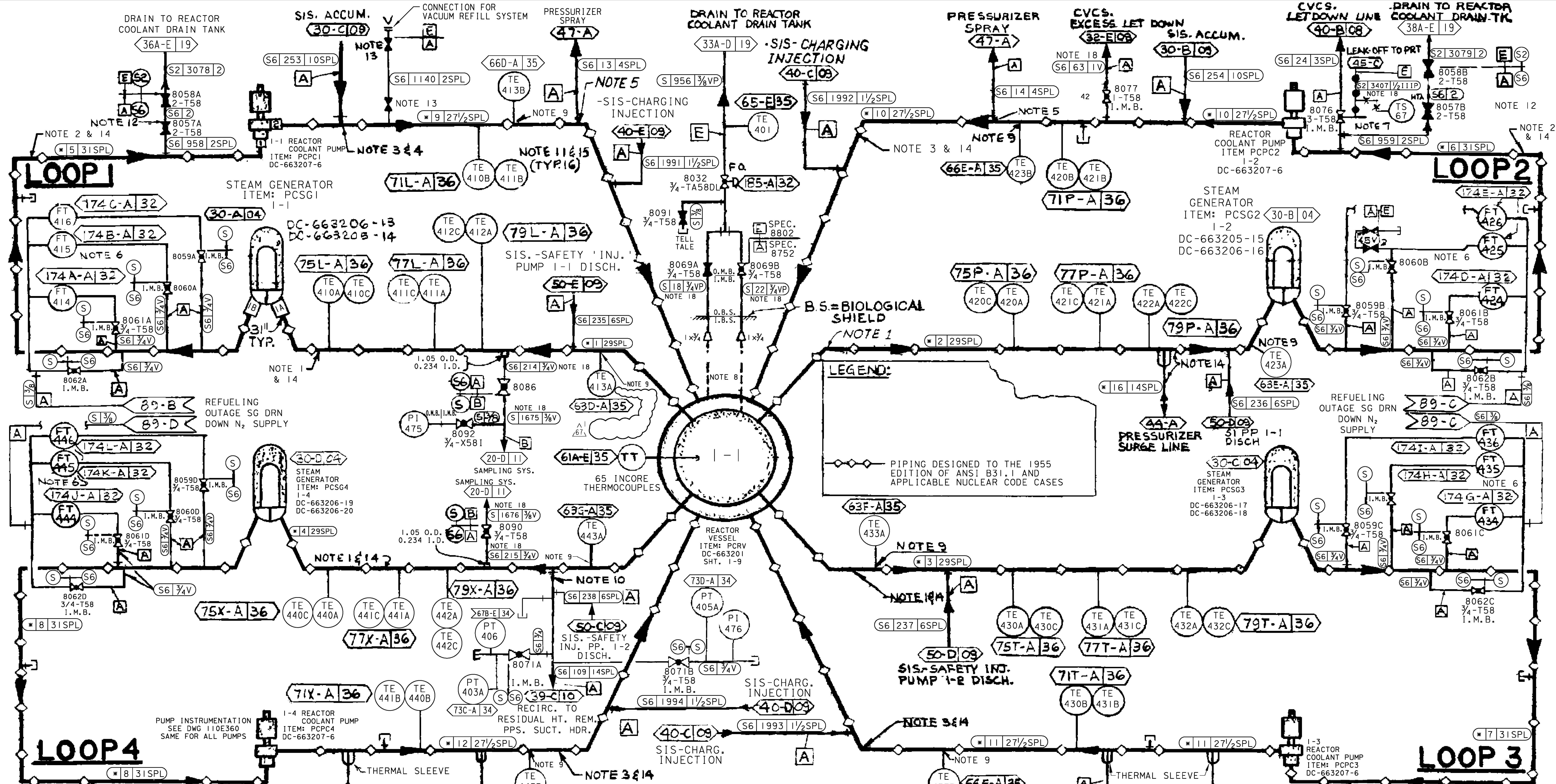


E  
D  
C  
B  
A

E  
D  
C  
B  
A



**LEGEND:**

PIPING DESIGNED TO THE 1955 EDITION OF ANSI B31.1 AND APPLICABLE NUCLEAR CODE CASES

**NOTES:**

- 29" INSIDE DIAMETER (31-D)
- 31" INSIDE DIAMETER (30-E)
- 27.5" INSIDE DIAMETER (32-E)
- ALL (W) ITEM NUMBERS IN RCS ARE SHOWN WITHOUT PREFIX PGE RC. REF (W) STATUS REF.
- SPRAY LINE SCOOP (33-E)
- ELBOW FLOW METERS (30-D)
- TS-67 IS STRAPPED TO LEAK-OFF 18" TO GASKET TO VALVE (38-E)
- HEAD GASKET MONITORING CONNECTIONS FURNISHED WITH REACTOR VESSEL (34-D)

- WIDE RANGE RTD INSTALLED IN WELL & INSULATED, SEE DWG 663320-497
- LOCATE CONNECTION IN BOTTOM HALF OF REACTOR COOLANT PIPING ON 45° ANGLE TO VERTICAL (33-B)
- DUAL ELEMENT RTD'S (32/33-B/D) (36/37-B/D)
- SPECIAL LINE INSULATION BEFORE ISOLATION VALVE, INCLUDING VALVE (30-E)
- ANCHOR DARLING 2" DOUBLEDISC GATE VALVE DWG 6006473-2, 9/C 93-620-4 (32-E)
- REACTOR COOLANT LOOPS AND PRESSURIZER SURGE LINE-FURNISHED BY (W), INSPECTION DOCUMENTATION TO ASME B D V CODE SECT. I, 1968

18. INSULATION ON PORTIONS OF THESE LINES HAVE ADDITIONAL BANDS INSTALLED ON 3" CENTER-TO-CENTER (MAX) SPACING. SEE DWGS 224370, 224371, 224372, 224382, 224389, 224395, 500177, 500181 AND 502183 FOR SPECIFIC LOCATIONS.

16. DELETED

15. LOOP PIPING IS PROVIDED WITH REMOVABLE, CONVENTIONAL INSULATION AT RTD LOCATIONS PER DRAWING 663320-69, 70, 83, 84, 85, 86, 102 (33-E)

REF: DWG DC-663220-1

17. SEE SHT 7A FOR RVRLIS ALIGNMENT FOR OPERATION (30-A)

DIABLO CANYON POWER PLANT - PG&E CO.  
REACTOR COOLANT SYSTEM

UNIT 1

| DRAWING | SHEET | PAGE | REV |
|---------|-------|------|-----|
| 102007  | 3     | 0    | 67  |