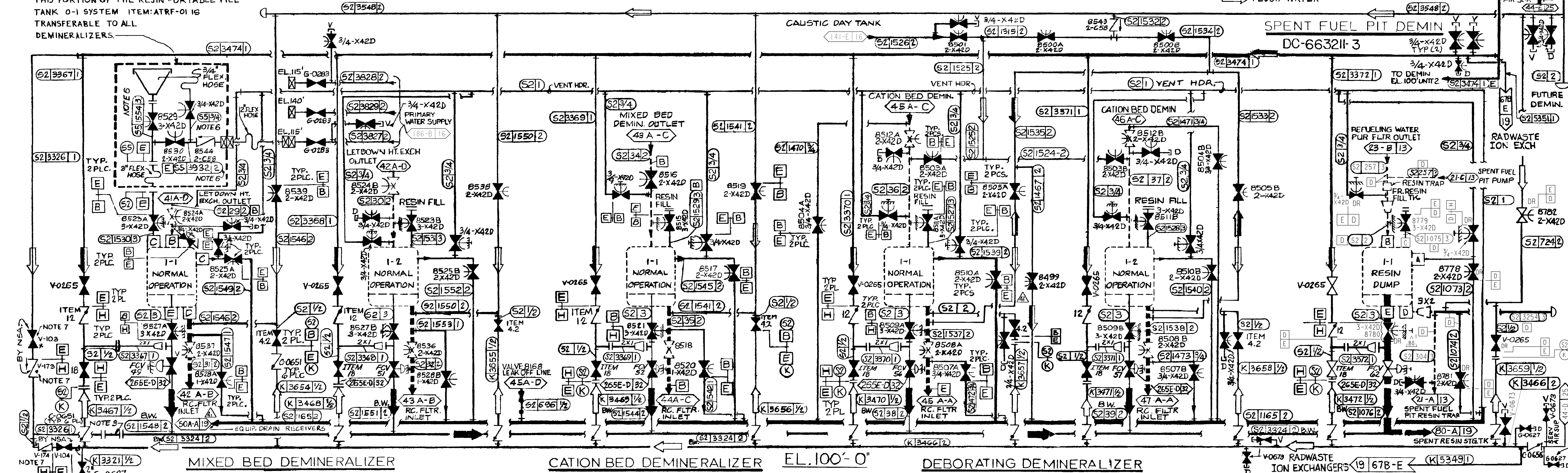


THIS PORTION OF THE RESIN PORTABLE FILL TANK 0-1 SYSTEM ITEM:ATRF-0116 TRANSFERABLE TO ALL DEMINERALIZERS.



NOTES: 1. FOR PIPING SPECS, SPEC BOUNDARIES, CODE CLASSES AND CODE BOUNDARIES REFER TO EQUIPMENT 1 IN EACH DEMINERALIZER GROUP.
2. BW INDICATES BUTTWELDED (72-A)

3. 1" FLANGED SPOOL FOR CLEANOUT ENTRY INTO 2" LINE. (70-79-AD)
4. ALL VALVES WITH ITEM NOS. TO BE UNDER SPEC. 0722 UNLESS NOTED.
5. PIPING ON THIS SHEET IS P.G.#E. CODE CLASS [E], EXCEPT AS NOTED.
6. SPEC. *55* APPLIES TO PIPE ONLY, EXCLUDING FLANGES AND VALVES

7. VALVES PROVIDED BY "NSA" SEE DWG. 101935 (VALVE INVENTORY) (70-DA)
B. RESIN HDR. BLOWOUT VALVES (70-CA) (79-CA)

DIABLO CANYON POWER PLANT - PG&E CO.
CHEMICAL & VOLUME CONTROL SYSTEM

DRAWING 102008 SHEET 7 PAGE 0 REV 80