

BEARING DESIGNATION

- ① TOP GUIDE BEARING
- ② TOP THRUST BEARING
- ③ BOTTOM GUIDE BEARING
- ④ PUMP GUIDE BEARING

A

B

C

D

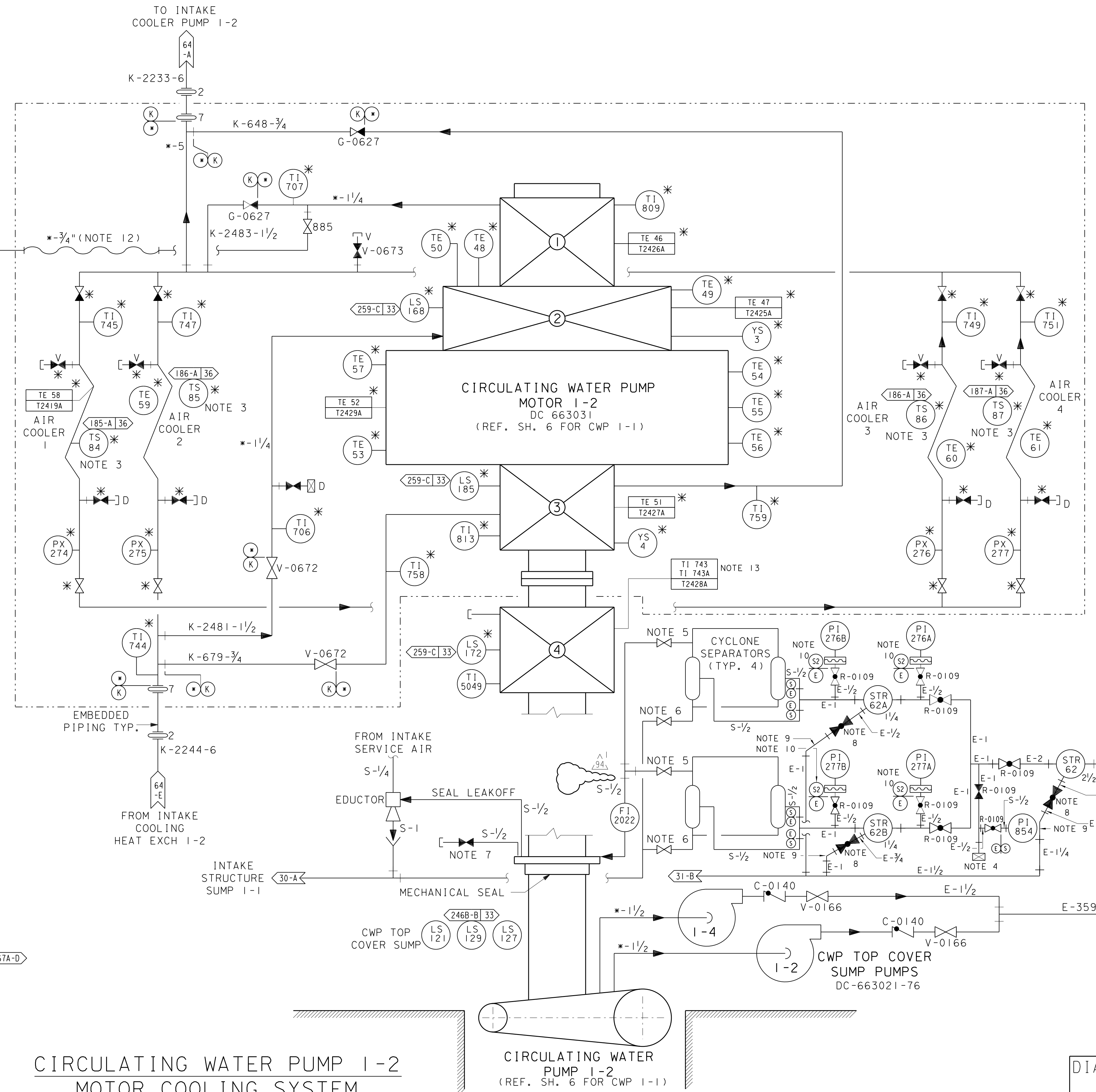
A

B

C

D

E



- NOTES:**
1. ALL PIPING ON THIS SHEET ARE PG&E CLASS "E" UNLESS OTHERWISE NOTED.
 2. VENT AND DRAIN VALVES WITH PG&E VALVE NOS. ARE 3/4" IN SIZE EXCEPT AS NOTED.
 3. USED FOR CARDOX FIRE PROTECTION SYS. PG&E RECORD NO. DC-663086 AND MULTI-VARIABLE INST. SYS. DWG. 102036, SHTS. 31B & 31C. (62A-C) (62A-B) (66A-B) (67A-B)
 4. 3/4" FLEX HOSE CONNECTION IS FOR ALTERNATE WATER SUPPLY SOURCE TO CWP 1-2 SEAL DURING DEMUSSELLING ONLY. IN-SERVICE PUMP AS ALTERNATE SOURCE WILL SUPPLY WATER TO BOTH CWP'S MECH. SEALS. (67A-D)
 5. WHITEY/SWAGelok SS-45SB (65A-C) (65A-D) (66A-D)
 6. BALL VALVE (WHITEY-4456) (65A-D)
 7. BALL VALVE (PBM INC. SP-H-32-S-2/FQ) (64A-D)
 8. BALL VALVE, BRONZE, THD. - MCMaster CARR, MODEL 4726K39 (STR 62), MODEL 4726K12 (STR 62A & 62B). (66A-D) (67A-D)
 9. TUBING (FLEX.), NALGENE 980 CLEAR BRAIDED VINYL, 1/4" (STR 62), 1" (STR 62A & 62B). (66A-D) (67A-D)
 10. USE TP 316 SS INSTEAD OF TP 304 SS, IF AVAILABLE. (66A-C) (67A-C) (66A-D) (67A-D)
 11. ARI MODEL S-050-VAC AUTOMATIC AIR VENT. (61A-A)
 12. 3/4" FLEX HOSE, SYNFLex 3130-12, S/C 17-2193, WITH 3/4" NPT X HOSE COUPLING, S/C 17-2185 (OR EQUIV). (62A-B)
 13. TI-743 IS A DUAL ELEMENT T/C, TI-743 & TI-743A. TI-743A IS SPARE. (66A-C)

**CIRCULATING WATER PUMP 1-2
MOTOR COOLING SYSTEM**
(REFER TO SH.6 FOR CWP 1-1 SYSTEM)

**CIRCULATING WATER
PUMP 1-2**
(REF. SH. 6 FOR CWP 1-1)

UNIT I

DIABLO CANYON POWER PLANT - PG&E CO.
SALTWATER SYSTEMS

DRAWING	SHEET	PAGE	REV
102017	6A	0	94

RASTER=102017-6A-0.dgn
 DGN=102017-6A-0.dgn
 CAD User: ZNS4 Date: 02-23-2018

02-23-2018	ZNS4	FXC2	N/A	NOT REQUIRED PER CF3.1D5	-	-	-	Revised Per DFT-7*4420
DATE	DWN	RE	IV	PROFESSIONAL ENGINEER	PE DISC.	PE#	PE EXP.	