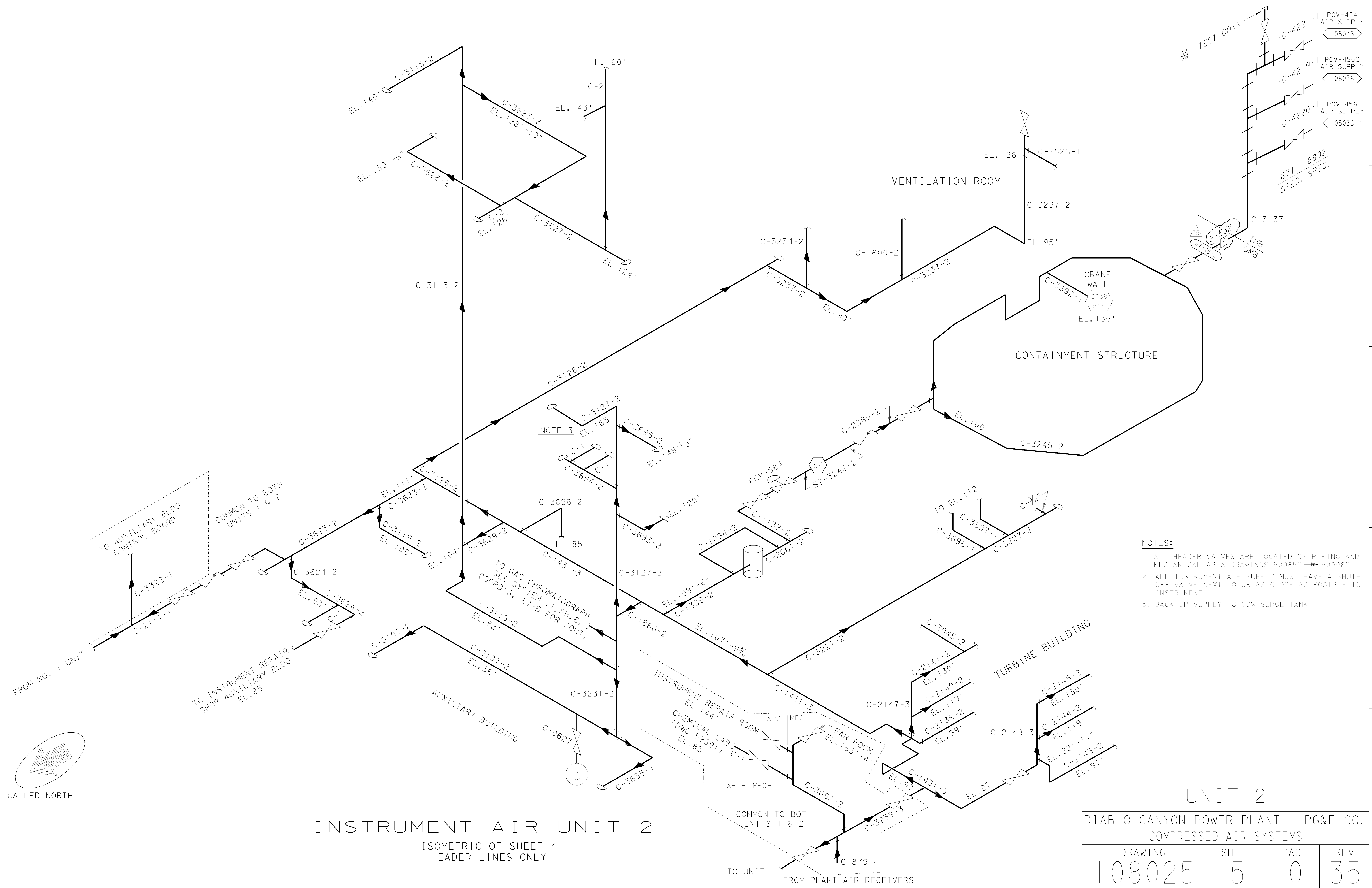


A
B
C
D
E



- NOTES:**
1. ALL HEADER VALVES ARE LOCATED ON PIPING AND MECHANICAL AREA DRAWINGS 500852 -> 500962
 2. ALL INSTRUMENT AIR SUPPLY MUST HAVE A SHUT-OFF VALVE NEXT TO OR AS CLOSE AS POSSIBLE TO INSTRUMENT
 3. BACK-UP SUPPLY TO CCW SURGE TANK

INSTRUMENT AIR UNIT 2
ISOMETRIC OF SHEET 4
HEADER LINES ONLY

DIABLO CANYON POWER PLANT - PG&E CO.			
COMPRESSED AIR SYSTEMS			
DRAWING	SHEET	PAGE	REV
108025	5	0	35

06-07-2016	ZNS4	Fxc2	N/A	NOT REQUIRED PER CF3.1D5	-	-	-	REVISED PER DFT-7*3730
DATE	DWN	RE	IV	PROFESSIONAL ENGINEER	PE DISC.	PE#	PE EXP.	

RASTER=108025.s5p0.dgn
DCN=108025.s5p0.dgn
CAD User: ZNS4 Date: 06-07-2016

