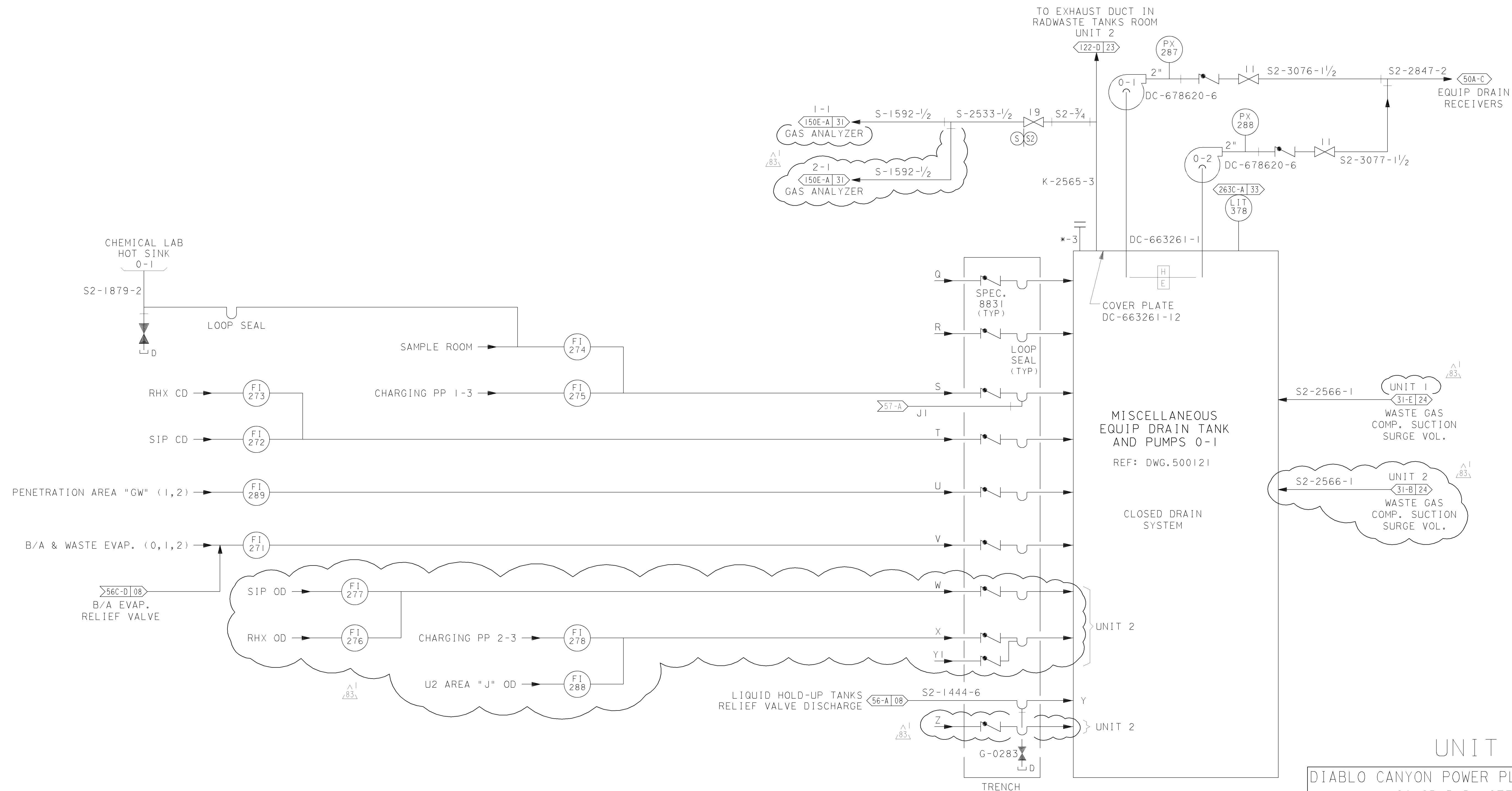


NOTES:

1. VALVES WITH ITEM NUMBERS ∇ ARE SPECIFIED ON SPEC.0722 UNLESS OTHERWISE NOTED
2. FOR DRAIN COLLECTION PIPING TO AND INCLUDING HEADERS P TO Z REFER TO PG&E DRAINAGE AND FIRE FIGHTING DRAWINGS 500121 TO 500132; 500994 TO 500996 & 500998 TO 501005 AND 501012
3. ALL PIPING ON THIS SHEET IS PG&E CODE CLASS E EXCEPT AS NOTED



UNIT 1			
DIABLO CANYON POWER PLANT - PG&E CO.			
LIQUID RADWASTE SYSTEM			
DRAWING	SHEET	PAGE	REV
102019	4	0	83

10-27-2015	ZNS4	Fxc2	KJD3	NOT REQUIRED PER CF3.1D5	-	-	-	REVISED PER DFT-7*3297
DATE	DWN	RE	IV	PROFESSIONAL ENGINEER	PE DISC.	PE#	PE EXP.	

RASTER=102019s4.dgn
 DGN=102019s4.dgn
 CAD User: ZNS4 Date: 10-27-2015